

UNITED STATES  
DEPARTMENT OF THE INTERIOR  
GEOLOGICAL SURVEY

## APPLICATION FOR PERMIT TO DRILL, DEEPEN, OR PLUG BACK

## 1a. TYPE OF WORK

DRILL ☒DEEPEN ☐PLUG BACK ☐

## b. TYPE OF WELL

OIL  
WELL ☐GAS  
WELL ☒

OTHER

SINGLE  
ZONE ☒MULTIPLE  
ZONE ☐

## 2. NAME OF OPERATOR

Northwest Pipeline Corporation

## 3. ADDRESS OF OPERATOR

P.O. Box 90, Farmington, N.M. 87499

## 4. LOCATION OF WELL (Report location clearly and in accordance with any State requirements.)

At surface

1520 FSL &amp; 1670 FWL NE/SW

At proposed prod. zone

1520 FSL &amp; 1670 FWL

## 14. DISTANCE IN MILES AND DIRECTION FROM NEAREST TOWN OR POST OFFICE\*

20 Miles East of Navajo Dam Post Office

## 15. DISTANCE FROM PROPOSED\*

LOCATION TO NEAREST

PROPERTY OR LEASE LINE, FT.  
(Also to nearest drig. unit line, if any)

970'

## 15. DISTANCE FROM PROPOSED LOCATION\*

TO NEAREST WELL, DRILLING, COMPLETED,  
OR APPLIED FOR, ON THIS LEASE, FT.

500'

## 21. ELEVATIONS (Show whether DF, RT, GR, etc.)

6293' GR

## 23.

## PROPOSED CASING AND CEMENTING PROGRAM

SIZE OF HOLE	SIZE OF CASING	WEIGHT PER FOOT	SETTING DEPTH	
12-1/4"	9-5/8"	36#	350'	220 cu.ft
8-3/4"	7"	20#	3533'	375 cu.ft
6-1/4"	4-1/2"	10.5# & 11.6#	7808'	675 cu.ft

Selectively perforate and stimulate the Dakota Formation. Completion plans will be determined at Total Depth.

A BOP will be installed after the surface casing is set and cemented. All subsequent work will be conducted through the BOP's.

The West half of Section 5 is dedicated to this well.

Gas is dedicated.

RECEIVED

MAY 14 1984

OIL CON. DIV.  
DIST. 3

IN ABOVE SPACE DESCRIBE PROPOSED PROGRAM: If proposal is to deepen or plug back, give data on present productive zone and proposed new productive zone. If proposal is to drill or deepen directionally, give pertinent data on subsurface locations and measured and true vertical depths. Give blowout preventer program, if any.

## 24.

SIGNED

Paul C. Thompson

TITLE Sr. Drilling Engineer

DATE 1-23-84

(This space for Federal or State office use)

PERMIT NO.

APPROVAL DATE

APPROVED BY

TITLE

DATE

CONDITIONS OF APPROVAL, IF ANY:

PVM/djb

\*See Instructions On Reverse Side

APPROVED AS AMENDED	
MAY 16 1984	
[Signature]	
AREA MANAGER	AREA

All distances must be from the outer boundaries of the Section.

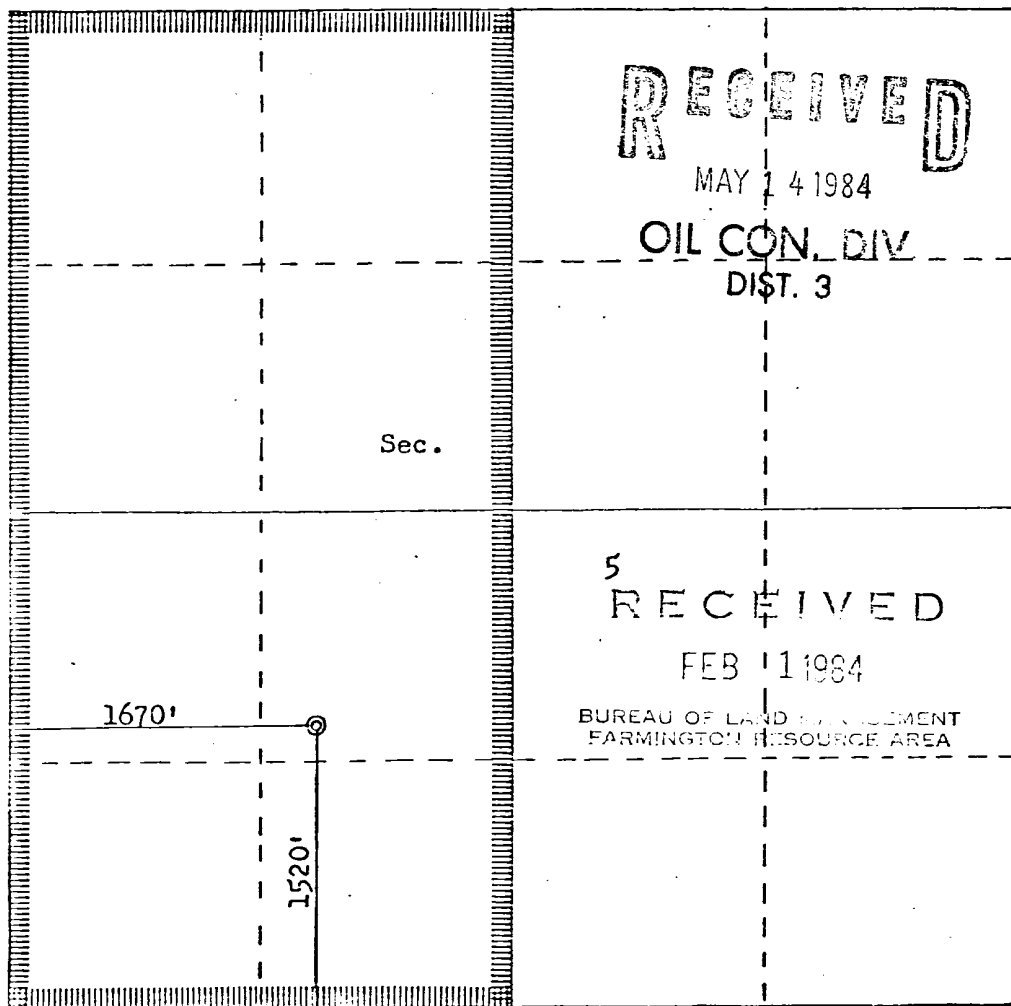
Operator <b>NORTHWEST PIPELINE CORPORATION</b>			Lease <b>SAN JUAN 31-6 UNIT</b>		Well No. <b>51</b>
Unit Letter <b>K</b>	Section <b>5</b>	Township <b>30N</b>	Range <b>6W</b>	County <b>Rio Arriba</b>	
Actual Footage Location of Well: <b>1520</b> feet from the <b>South</b> line and <b>1670</b> feet from the <b>West</b> line					
Ground Level Elev. <b>6293</b>	Producing Formation <b>Dakota</b>		Pool <b>Basin Dakota</b>		Dedicated Acreage: <b>W/2 320</b> Acres

1. Outline the acreage dedicated to the subject well by colored pencil or hatchure marks on the plat below.
2. If more than one lease is dedicated to the well, outline each and identify the ownership thereof (both as to working interest and royalty).
3. If more than one lease of different ownership is dedicated to the well, have the interests of all owners been consolidated by communitization, unitization, force-pooling, etc?

☒ Yes ☐ No If answer is "yes," type of consolidation Unitization

If answer is "no," list the owners and tract descriptions which have actually been consolidated. (Use reverse side of this form if necessary.)

No allowable will be assigned to the well until all interests have been consolidated (by communitization, unitization, forced-pooling, or otherwise) or until a non-standard unit, eliminating such interests, has been approved by the Commission.



CERTIFICATION

I hereby certify that the information contained herein is true and complete to the best of my knowledge and belief.

*Paul C. Thompson*

Name

Paul C. Thompson

Position

Sr. Drilling Engineer

Company

Northwest Pipeline Corp

Date

January 4, 1984

I hereby certify that the well location shown on this plat was plotted from field notes of actual surveys made by me or under my supervision, and that the same is true and correct to the best of my knowledge and belief.

Date Surveyed

January 3, 1984

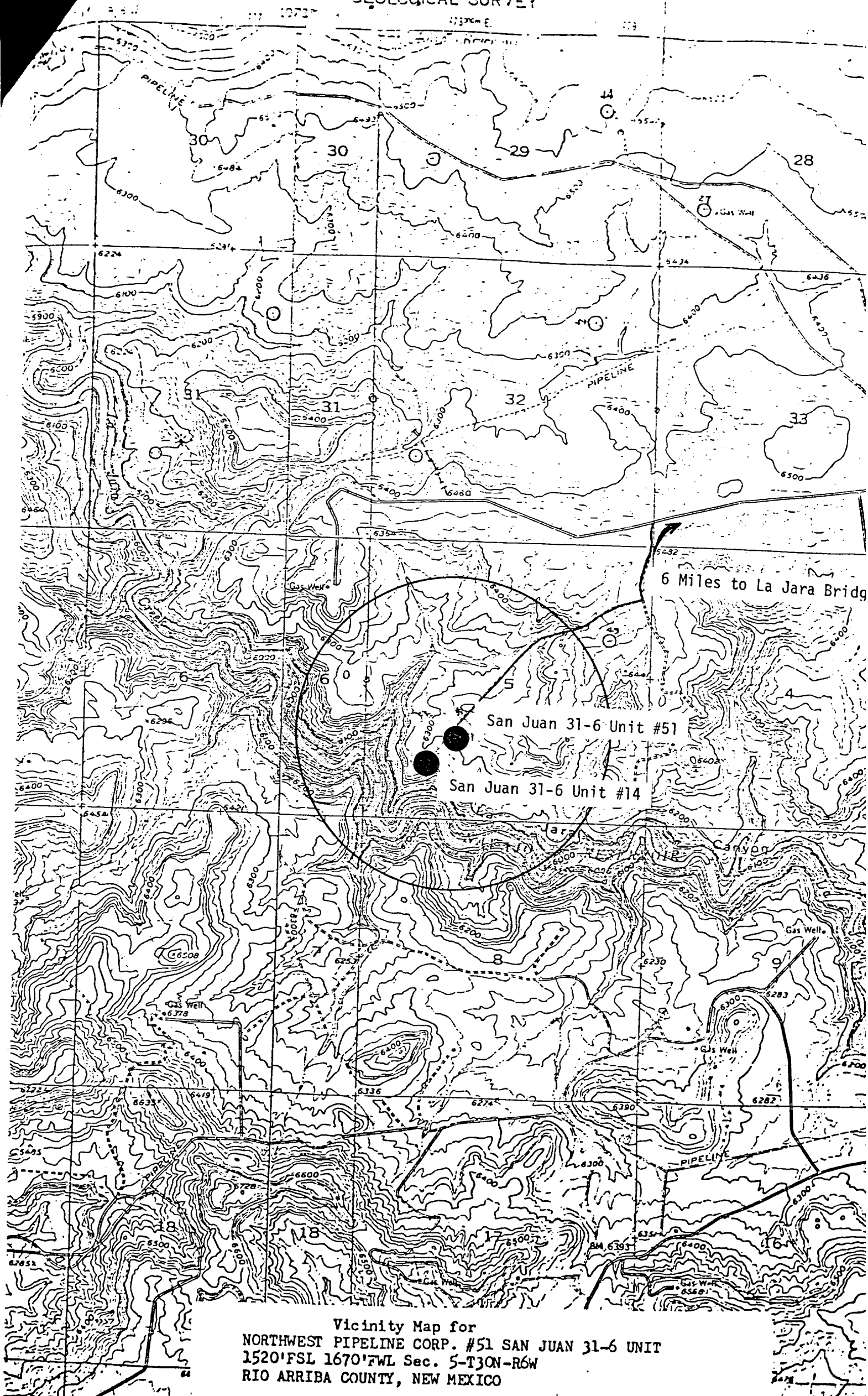
Registered Professional Engineer and Land Surveyor

*Fred B. Kerr Jr.*  
Fred B. Kerr Jr.

Certificate No. 3950

3950

# GEOLOGICAL SURVEY



Vicinity Map for  
 NORTHWEST PIPELINE CORP. #51 SAN JUAN 31-6 UNIT  
 1520'FSL 1670'FWL Sec. 5-T3ON-R6W  
 RIO ARriba COUNTY, NEW MEXICO