

UNITED STATES
DEPARTMENT OF THE INTERIOR
BUREAU OF LAND MANAGEMENT

SUBMIT IN TRIPLICATE*
(Other instructions on
reverse side)

30-039-24112
Form approved.
Budget Bureau No. 1004-0136
Expires August 31, 1985

APPLICATION FOR PERMIT TO DRILL, DEEPEN, OR PLUG BACK

1a. TYPE OF WORK

DRILL ☒

DEEPEN ☐

PLUG BACK ☐

b. TYPE OF WELL

OIL
WELL ☐

GAS
WELL ☒

OTHER

SINGLE
ZONE ☐

MULTIPLE
ZONE ☒

2. NAME OF OPERATOR

Robert L. Bayless

3. ADDRESS OF OPERATOR

P.O. Box 168, Farmington, NM 87499

4. LOCATION OF WELL (Report location clearly and in accordance with any State requirements)

At surface

790' FSL & 890' FWL

At proposed prod. zone

same

14. DISTANCE IN MILES AND DIRECTION FROM NEAREST TOWN OR POST OFFICE*

BUREAU OF LAND MANAGEMENT
FARMINGTON RESOURCE AREA

15. DISTANCE FROM PROPOSED*

LOCATION TO NEAREST
PROPERTY OR LEASE LINE, FT.
(Also to nearest drg. unit line, if any)

16. NO. OF ACRES IN LEASE

1920'

17. NO. OF ACRES ASSIGNED

TO THIS WELL

175.86 160

18. DISTANCE FROM PROPOSED LOCATION*

TO NEAREST WELL, DRILLING, COMPLETED,
OR APPLIED FOR, ON THIS LEASE, FT.

19. PROPOSED DEPTH

4115'

20. ROTARY OR CABLE TOOLS

0-TD

21. ELEVATIONS (Show whether DF, RT, GR, etc.)

7131' GL

7203' RKB

DRILLING OPERATIONS AUTHORIZED ARE

SUBJECT TO COMPLIANCE WITH ATTACHED

This action is subject to technical and
procedural review pursuant to 43 CFR 3165.3
and appeal pursuant to 43 CFR 3165.4.

23.

PROPOSED CASING AND CEMENTING PROGRAM

SIZE OF HOLE	SIZE OF CASING	WEIGHT PER FOOT	SETTING DEPTH	QUANTITY OF CEMENT
9"	7"	23#/ft.	125 ft.	30 ft ³ Class B
6-1/4"	4-1/2"	11.6#/ft.	4115 ft.	206 ft ³ Class B w/2% econofil
				89 ft ³ 50-50 pozmix

Will drill 9" hole to 125' and set 125' of 23#/ft. J-55 casing cementing with 30 ft³ Class B cement, circulated to surface. Will drill 6-1/4" hole to 4115' and run 4115' of 4-1/2", 11.6#/ft. J-55 casing and cement with 206 ft.³ Class B with 2% econofil tailed by 89 ft.³ 50-50 pozmix with 2% gel and 10% salt. Circulating medium will be clear water, natural mud and water loss control additives. No abnormal pressures or temperatures are anticipated. Will run Induction and Density Logs. Blowout preventer schematic is attached. The gas from this formation is not dedicated to a gas contract.

ESTIMATED TOPS: Ojo Alamo - 3199'
Kirtland - 3439'
Fruitland - 3684'
Pictured Cliffs - 3797'
T.D. - 4115'

RECEIVED

DEC 29 1986

OIL CO.

File temp survey +/- bond log to determine cement top.

IN ABOVE SPACE DESCRIBE PROPOSED PROGRAM: If proposal is to deepen or plug back, give data on present productive zone and proposed new productive zone. If proposal is to drill or deepen directionally, give pertinent data on subsurface locations and measured and true vertical depths. Give blowout preventer program, if any.

24.

SIGNED

Kevin H. McGowan

TITLE

Petroleum Engineer

DATE

Dec. 8, 1986

(This space for Federal or State office use)

APPROVED
AS AMENDED

PERMIT NO.

APPROVAL DATE

DEC 23 1986

APPROVED BY

TITLE

DATE

CONDITIONS OF APPROVAL, IF ANY:

Robert Moore
AREA MANAGER

NMOCC

*See Instructions On Reverse Side

All distances must be from the outer boundaries of the Section.

Operator Robert L. Bayless, Producer		Lease JICARILLA 460		Well No. 2
Unit Letter M	Section 21	Township 30 North	Range 3 West	County Rio Arriba
Actual Footage Location of Well: (cardinal) 790 feet from the South line and 390 feet from the West line				
Ground Level Elev. 7191	Producing Formation Pictured Cliffs	Pool Wildcat	Dedicated Acreage: 160/175.86 Acres	

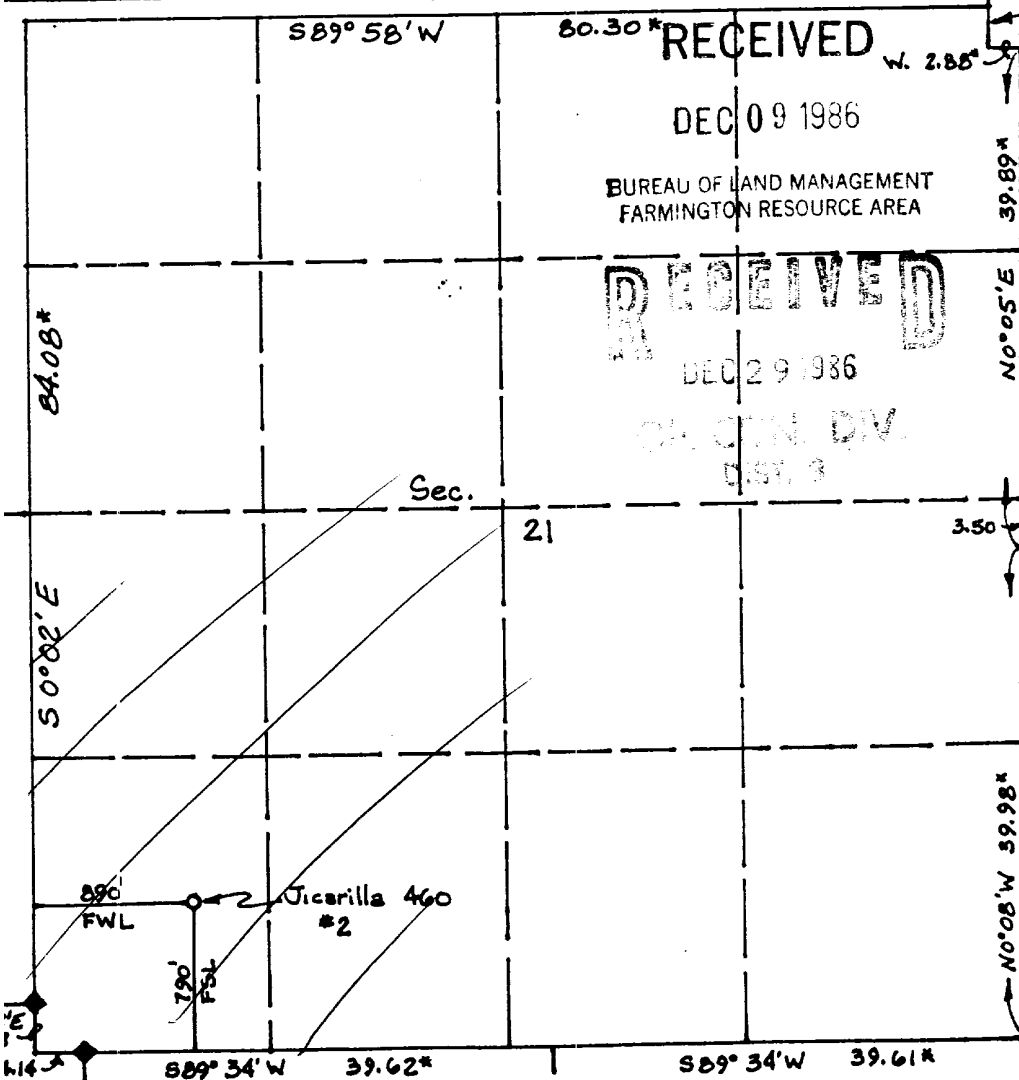
1. Outline the acreage dedicated to the subject well by colored pencil or hachure marks on the plat below.
2. If more than one lease is dedicated to the well, outline each and identify the ownership thereof (both as to working interest and royalty).
3. If more than one lease of different ownership is dedicated to the well, have the interests of all owners been consolidated by communitization, unitization, force-pooling, etc?

☐ Yes ☐ No If answer is "yes," type of consolidation _____

If answer is "no," list the owners and tract descriptions which have actually been consolidated. (Use reverse side of this form if necessary.) _____

No allowable will be assigned to the well until all interests have been consolidated (by communitization, unitization, forced-pooling, or otherwise) or until a non-standard unit, eliminating such interests, has been approved by the Division.

* Record GLO 1923 plat ♦ Ed. 1917 GLO B.C.



50°01'E CERTIFICATION
3.61*

I hereby certify that the information contained herein is true and complete to the best of my knowledge and belief.

Kevin H. McCord

Name

Kevin H. McCord

Position

Petroleum Engineer

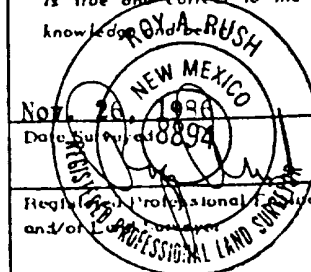
Company

Robert L. Bayless, ~~Producer~~

Date

December 8, 1986

I hereby certify that the well location shown on this plat was plotted from field notes of actual surveys made by me or under my supervision, and that the same is true and correct to the best of my knowledge and belief.



Certificate No.

8894

Vicinity map for:
Robert L. Bayless
Jicarilla 460 #2
790' FSL & 890' FWL
Sec. 21, T30N, R3W
Rio Arriba Cnty., N.M.

Loc. Grnd. Elev. 7191

