

UNITED STATES  
DEPARTMENT OF THE INTERIOR  
BUREAU OF LAND MANAGEMENT

APPLICATION FOR PERMIT TO DRILL, DEEPEN, OR PLUG BACK

1a. TYPE OF WORK

DRILL ☒

DEEPEN ☐

PLUG BACK ☐

b. TYPE OF WELL

OIL  
WELL ☐

GAS  
WELL ☒

OTHER

2. NAME OF OPERATOR

Robert L. Bayless

3. ADDRESS OF OPERATOR

P.O. Box 168, Farmington, NM 87499

4. LOCATION OF WELL (Report location clearly and in accordance with any State requirements.)\*  
At surface

1850'FSL & 1775'FEL

At proposed prod. zone

Same

14. DISTANCE IN MILES AND DIRECTION FROM NEAREST TOWN OR POST OFFICE\*

15. DISTANCE FROM PROPOSED\*

LOCATION TO NEAREST  
PROPERTY OR LEASE LINE, FT.  
(Also to nearest drlg. unit line, if any)

18. DISTANCE FROM PROPOSED LOCATION\*  
TO NEAREST WELL, DRILLING, COMPLETED,  
OR APPLIED FOR, ON THIS LEASE, FT.

21. ELEVATIONS (Show whether DF, RT, GR, etc.)

7014'GL

7026'RKB

16. NO. OF ACRES IN LEASE

Approx. 2560

19. PROPOSED DEPTH

4,025'

17. NO. OF ACRES ASSIGNED  
TO THIS WELL

160

20. ROTARY OR CABLE TOOLS

0'-TD

22. APPROX. DATE WORK WILL START\*

5. LEASE DESIGNATION AND SERIAL NO.

Jicarilla Contract 464

6. IF INDIAN, ALLOTTEE OR TRIBE NAME

Jicarilla Apache Tribe

7. UNIT AGREEMENT NAME

8. FARM OR LEASE NAME

Jicarilla 464

9. WELL NO.

4

10. FIELD AND POOL, OR WILDCAT

Wildcat

11. SEC., T., R., M., OR BLK.  
AND SURVEY OR AREA

Sec. 31-T30N-R3W

12. COUNTY OR PARISH

Rio Arriba

13. STATE

NM

DRILLING OPERATIONS AUTHORIZED ARE  
SUBJECT TO COMPLIANCE WITH ATTACHED  
"GENERAL REQUIREMENTS"

PROPOSED CASING AND CEMENTING PROGRAM

SIZE OF CASING	WEIGHT PER FOOT	SETTING DEPTH	QUANTITY OF CEMENT
9-7/8"	26.4#	125'	60 sx Class "B" - 71 ft <sup>3</sup>
6-3/4"	11.6#	4025'	200 sx 50/50 pozmix - 252 ft <sup>3</sup>

Will drill hole to 125' and set 125 feet, 7-5/8", 26.4#/ft, J55 Casing, cementing with 71 ft<sup>3</sup>, Class "B" cement, circulated to surface. Will drill 6-3/4" hole to 4025' and run 4025' of 4-1/2", 11.6#/ft, J55 casing and cement with 252 ft<sup>3</sup> 50/50 pozmix with 2% gel and 10% salt. Circulating medium will be clear water, natural mud and water loss control additives. No abnormal pressures or temperatures are anticipated. Will run Induction and Density Logs. Blowout preventer schematic is attached. The gas from this formation is not dedicated to a gas contract.

Estimated Tops: Ojo Alamo - 3119'  
Kirtland - 3356'  
Fruitland - 3416'  
Pictured Cliffs - 3648'  
T.D. - 4025'

RECEIVED  
SEP 21 1987  
OIL CON. DIV.  
DIST. 3

IN ABOVE SPACE DESCRIBE PROPOSED PROGRAM: If proposal is to deepen or plug back, give data on present productive zone and proposed new productive zone. If proposal is to drill or deepen directionally, give pertinent data on subsurface locations and measured and true vertical depths. Give blowout preventer program, if any.

24.

SIGNED

Kevin H. McCord

TITLE Petroleum Engineer

DATE July 27, 1987

(This space for Federal or State office use)

PERMIT NO.

APPROVAL DATE

APPROVED BY

TITLE

DATE

CONDITIONS OF APPROVAL, IF ANY:

APPROVED  
AS AMENDED  
SEP 1 1987

/s/ Arlan S. Hiner

AREA MANAGER

\*See Instructions On Reverse Side

**NEW MEXICO OIL CONSERVATION COMMISSION  
WELL LOCATION AND ACREAGE DEDICATION PLAT**

Form C-102  
Supersedes C-128  
Effective 1-1-85

All distances must be from the outer boundaries of the Section.

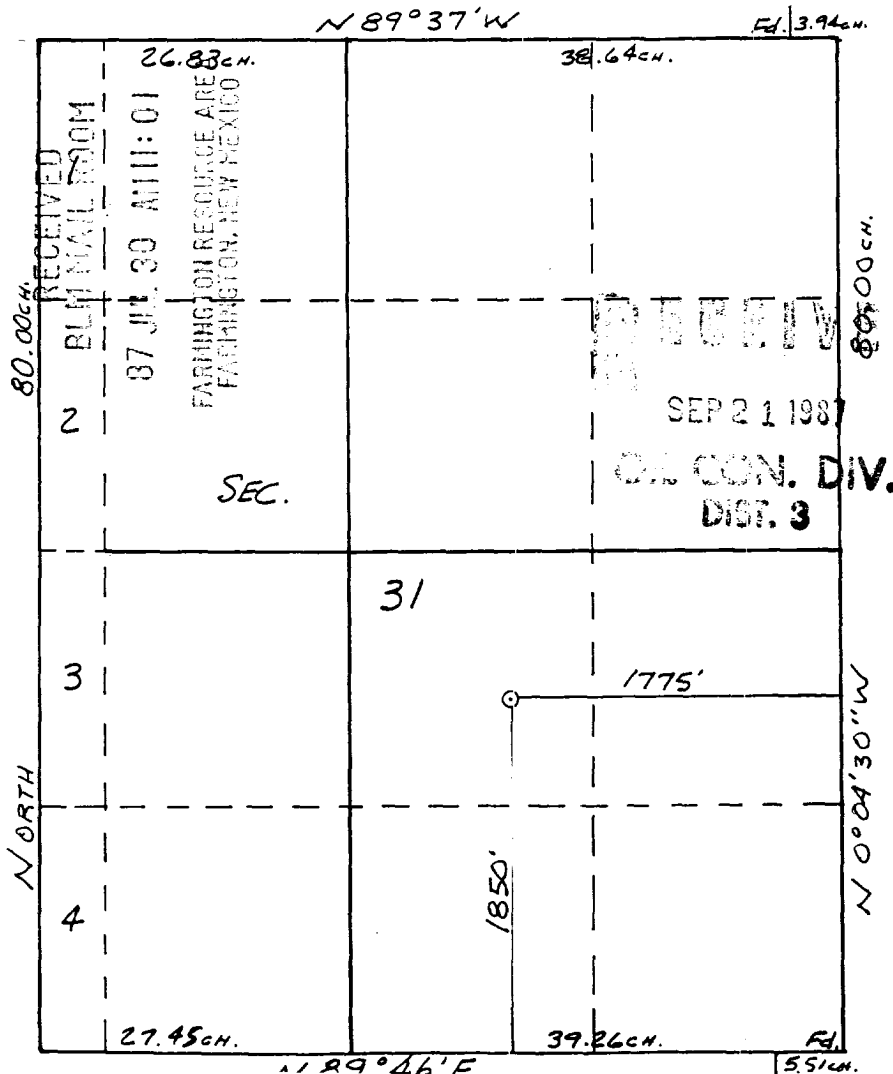
Operator <b>ROBERT L. BAYLESS</b>			Lease <b>JICARILLA 464</b>		Well No. <b>4</b>
Unit Letter <b>J</b>	Section <b>31</b>	Township <b>30 N</b>	Range <b>3 W</b>	County <b>Rio Arriba</b>	
Actual Footage Location of Well: <div style="display: flex; justify-content: space-between;"> <span>1850 feet from the South line and</span> <span>1775 feet from the East line</span> </div>					
Ground Level Elev. <b>7014</b>	Producing Formation <b>Pictured Cliffs</b>	Pool <b>Wildcat</b>	Dedicated Acreage <b>160</b> Acres		

1. Outline the acreage dedicated to the subject well by colored pencil or hachure marks on the plat below.
2. If more than one lease is dedicated to the well, outline each and identify the ownership thereof (both as to working interest and royalty).
3. If more than one lease of different ownership is dedicated to the well, have the interests of all owners been consolidated by communitization, unitization, force-pooling, etc?

☐ Yes   ☐ No   If answer is "yes," type of consolidation \_\_\_\_\_

If answer is "no," list the owners and tract descriptions which have actually been consolidated. (Use reverse side of this form if necessary.) \_\_\_\_\_

No allowable will be assigned to the well until all interests have been consolidated (by communitization, unitization, forced-pooling, or otherwise) or until a non-standard unit, eliminating such interests, has been approved by the Commission.



<b>CERTIFICATION</b>	
I hereby certify that the information contained herein is true and complete to the best of my knowledge and belief.	
Name	<b>Kevin H. McCord</b>
Position	<b>Petroleum Engineer</b>
Company	<b>Robert L. Bayless, Producer</b>
Date	<b>July 27, 1987</b>
I hereby certify that the well location shown on this plat was plotted from field notes of actual surveys made by me or under my supervision, and that the same is true and correct to the best of my knowledge and belief.	
Date Surveyed	<b>6-24-87</b>
<b>William E. Mahne, II</b>	
Registered Professional Engineer and Land Surveyor	
#8466	
Certificate No. 8466	