

UNITED STATES
DEPARTMENT OF THE INTERIOR
BUREAU OF LAND MANAGEMENT

32-157-24-27

RECEIVED
MAIL ROOM

APPLICATION FOR PERMIT TO DRILL, DEEPEN, OR PLUG BACK

1a. TYPE OF WORK DRILL	5. LEASE NUMBER NM-012299-012292
1b. TYPE OF WELL GAS	6. IF INDIAN, ALL. OR TRIBE NAME
2. OPERATOR MERIDIAN OIL INC.	7. UNIT AGREEMENT NAME SAN JUAN 31-6 UNIT
3. ADDRESS & PHONE NO. OF OPERATOR P O BOX 4289 FARMINGTON, NM 87499	8. FARM OR LEASE NAME SAN JUAN 31-6 UNIT
4. LOCATION OF WELL 1000'S 1845'W	9. WELL NO. 204
14. DISTANCE IN MILES FROM NEAREST TOWN 14 MILES FROM GOVERNADOR	10. FIELD, POOL, OR WILDCAT BASIN FRUITLAND COAL
	11. SEC. T. R. M OR BLK. N SEC. 3 T30N R06W NMPM
15. DISTANCE FROM PROPOSED LOCATION 1000' TO NEAREST PROPERTY OR LEASE LINE.	12. COUNTY RIO ARRIBA
	13. STATE NM
16. ACRES IN LEASE 386.61	17. ACRES ASSIGNED TO WELL 320.16
18. DISTANCE FROM PROPOSED LOCATION TO NEAREST WELL DR. 500' COMPL., OR APPLIED FOR ON THIS LEASE.	19. PROPOSED DEPTH 3120'
	20. ROTARY OR CABLE TOOLS ROTARY
21. ELEVATIONS (DF, FT, GR, ETC.) 6285'GL	22. APPROX. DATE WORK WILL START MAY 17 1989
23. PROPOSED CASING AND CEMENTING PROGRAM DIST. 3 *SEE OPERATIONS PLAN	DRILLING OPERATIONS AUTHORIZED ARE SUBJECT TO COMPLIANCE WITH ATTACHED "GENERAL REQUIREMENTS".
24. AUTHORIZED BY: [Signature] REGULATORY AFFAIRS	5-2-89 DATE

PERMIT NO. _____ APPROVAL DATE _____
APPROVED BY _____ TITLE _____ DATE _____

APPROVED
AS AMENDED
MAY 11 1989
AREA MANAGER

NOTE: THIS FORMAT IS ISSUED IN LIEU OF US BLM FORM 3160-3.

NMOC

Well Name: 204 SAN JUAN 31-6 UNIT 1000'S 1845'W
Sec. 3 T30N R06W RIO ARRIBA NEW MEXICO
BASIN FRUITLAND COAL Elevation 6285'GL

Formation tops: Surface- SAN JOSE

Ojo Alamo- 2305
Kirtland- 2435
Fruitland- 2880
Fruitland Coal Top- 2985
Fruitland Coal Base- 3120
Intermediate TD- 2965
Total Depth- 3120
Pictured Cliffs- 3120

Logging Program: Mud logs from intermediate to total depth.

Mud Program:	Interval	Type	Weight	Visc.	Fl. Loss
	0 - 200	Spud	8.4 - 8.9	40-50	no control
	200 - 2965	Non-dispersed	8.4 - 9.1	30-60	no control
	2965 - 3120	Formation Water	8.4		no control

Casing Program:	Hole Size	Depth Interval	Csg. Size	Weight	Grade
	12 1/4"	0 - 200	9 5/8"	32.3#	H-40
	8 3/4"	0 - 2965	7"	20.0#	K-55
	6 1/4"	2915 - 3120	5 1/2"	15.5#	K-55
Tubing Program:		0 - 3120	2 7/8"	6.5#	J-55

Float Equipment: 9 5/8" surface casing - saw tooth guide shoe.

7" intermediate casing - guide shoe and self-fill insert float valve. Three centralizers run every other joint above shoe. Run insert float one joint above the guide shoe.

5 1/2" production casing - float shoe on bottom and a pre-drilled liner run to the 7" casing with a minimum 50' overlap. Liner hanger is a double slip grip type.

Wellhead Equipment: 9 5/8" x 7" x 2 7/8" x 11" 3000 psi xmas tree assembly.

Cementing:

9 5/8" surface casing - cement with 106 sacks of class "B" cement with 1/4# flocele/sack and 3% calcium chloride (125 cu ft. of slurry, 100% excess to circulate to surface). WOC 12 hours. Test casing to 600 psi for 30 minutes.

7" intermediate casing - lead with 42 sacks of 65/35 class "B" poz with 6% gel, 2% calcium chloride and 1/2 cu.ft. Perlite/sack (10.3 gallons of water/sack) tail with 100 sacks of class "B" with 2% calcium chloride. 198 lu ft. of slurry, 100% excess to cover the Ojo Alamo. Run temperature survey at 8 hours. WOC 12 hours. Test casing to 1500 psi for 30 minutes.

5 1/2" liner - do not cement.

All distances must be from the outer boundaries of the Section.

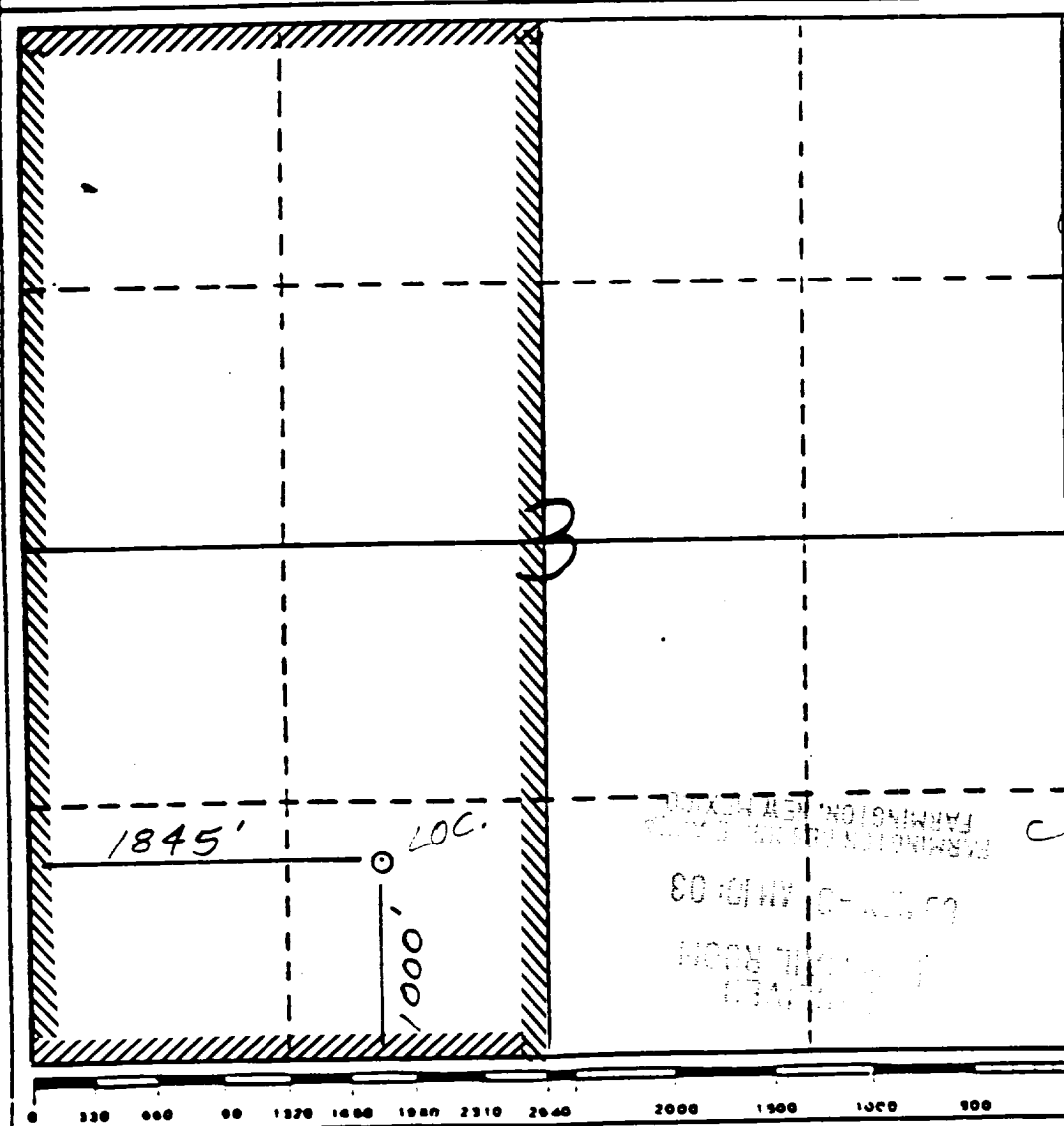
Operator Meridian Oil Inc.			Lease San Juan 31-6 Unit (NM-012292)		Well No. 204
Unit Letter N	Section 3	Township 30 North	Range 6 West	County Rio Arriba	
Actual Footage Location of Wells 1000 feet from the South line and 1845 feet from the West line					
Ground Level Elev. 6285'	Producing Formation Fruitland Coal		Pool Basin		Dedicated Acreage: 320.16

1. Outline the acreage dedicated to the subject well by colored pencil or hachure marks on the plat below.
2. If more than one lease is dedicated to the well, outline each and identify the ownership thereof (both as to working interest and royalty).
3. If more than one lease of different ownership is dedicated to the well, have the interests of all owners been consolidated by communitization, unitization, force-pooling, etc?

☒ Yes ☐ No If answer is "yes," type of consolidation Unitization

If answer is "no," list the owners and tract descriptions which have actually been consolidated. (Use reverse side of this form if necessary.)

No allowable will be assigned to the well until all interests have been consolidated (by communitization, unitization, forced-pooling, or otherwise) or until a non-standard unit, eliminating such interests, has been approved by the Division.



CERTIFICATION

I hereby certify that the information
contained herein is true and complete
to the best of my knowledge and belief.

Name
Regulatory Affairs

Position
Meridian Oil Inc.

Company
5-2-89

Date

I hereby certify that the location
shown on this plat was plotted from
notes of actual surveys made by me
under supervision, and that the
location is true and correct to the best of
my knowledge and belief.

Date Surveyed
11-22-88

Registered Professional Engineer
and/or Land Surveyor

Neale C. Edwards

Certificate No.
6857

Within line
boundaries
previously applied
for ROW:
32-5 & 102

ST 31-6 204

