

UNITED STATES
DEPARTMENT OF THE INTERIOR
BUREAU OF LAND MANAGEMENT

RECEIVED
JUN 22 1989
BUREAU OF LAND MANAGEMENT
FARMINGTON RESOURCE AREA

APPLICATION FOR PERMIT TO DRILL, DEEPEN, OR PLUG BACK

1a. TYPE OF WORK DRILL	5. LEASE NUMBER SF-080712A
1b. TYPE OF WELL GAS	6. IF INDIAN, ALL. OR TRIBE NAME
2. OPERATOR EL PASO NATURAL GAS CO.	7. UNIT AGREEMENT NAME SAN JUAN 30-6 UNIT
3. ADDRESS & PHONE NO. OF OPERATOR P O BOX 4289 FARMINGTON, NM 87499	8. FARM OR LEASE NAME SAN JUAN 30-6 UNIT
4. LOCATION OF WELL 1820'S 1430'W	9. WELL NO. 471
14. DISTANCE IN MILES FROM NEAREST TOWN 10 MILES FROM GOBERNADOR	10. FIELD, POOL, OR WILDCAT BASIN FRUITLAND COAL
15. DISTANCE FROM PROPOSED LOCATION 1430' TO NEAREST PROPERTY OR LEASE LINE.	11. SEC. T. R. M OR BLK. K SEC. 21 T30N R06W NMPM
16. ACRES IN LEASE 17. ACRES ASSIGNED TO WELL 320.00	12. COUNTY 13. STATE RIO ARRIBA NM
18. DISTANCE FROM PROPOSED LOCATION TO NEAREST WELL DR. 200' COMPL., OR APPLIED FOR ON THIS LEASE.	19. PROPOSED DEPTH 20. ROTARY OR CABLE TOOLS 3254' ROTARY
21. ELEVATIONS (DF, FT, GR, ETC.) 6330'GL	22. APPROX. DATE WORK WILL START

23. PROPOSED CASING AND CEMENTING PROGRAM

*SEE OPERATIONS PLAN

24. AUTHORIZED BY: [Signature]
REGULATORY AFFAIRS

6-22-89
DATE

PERMIT NO. _____ APPROVAL DATE _____
APPROVED BY _____ TITLE _____ DATE _____

NOTE: THIS FORMAT IS ISSUED IN LIEU OF US BLM FORM 3160-81

Submit to Appropriate
District Office
State Leases - 4 copies
Fee Lease - 3 copies

State of New Mexico
Energy, Minerals and Natural Resources Department

Form C-102
Revised 1-1-89

DISTRICT I
P.O. Box 1980, Hobbs, NM 88240

DISTRICT II
P.O. Drawer DD, Artesia, NM 88210

DISTRICT III
1000 Rio Brazos Rd., Aztec, NM 87410

OIL CONSERVATION DIVISION

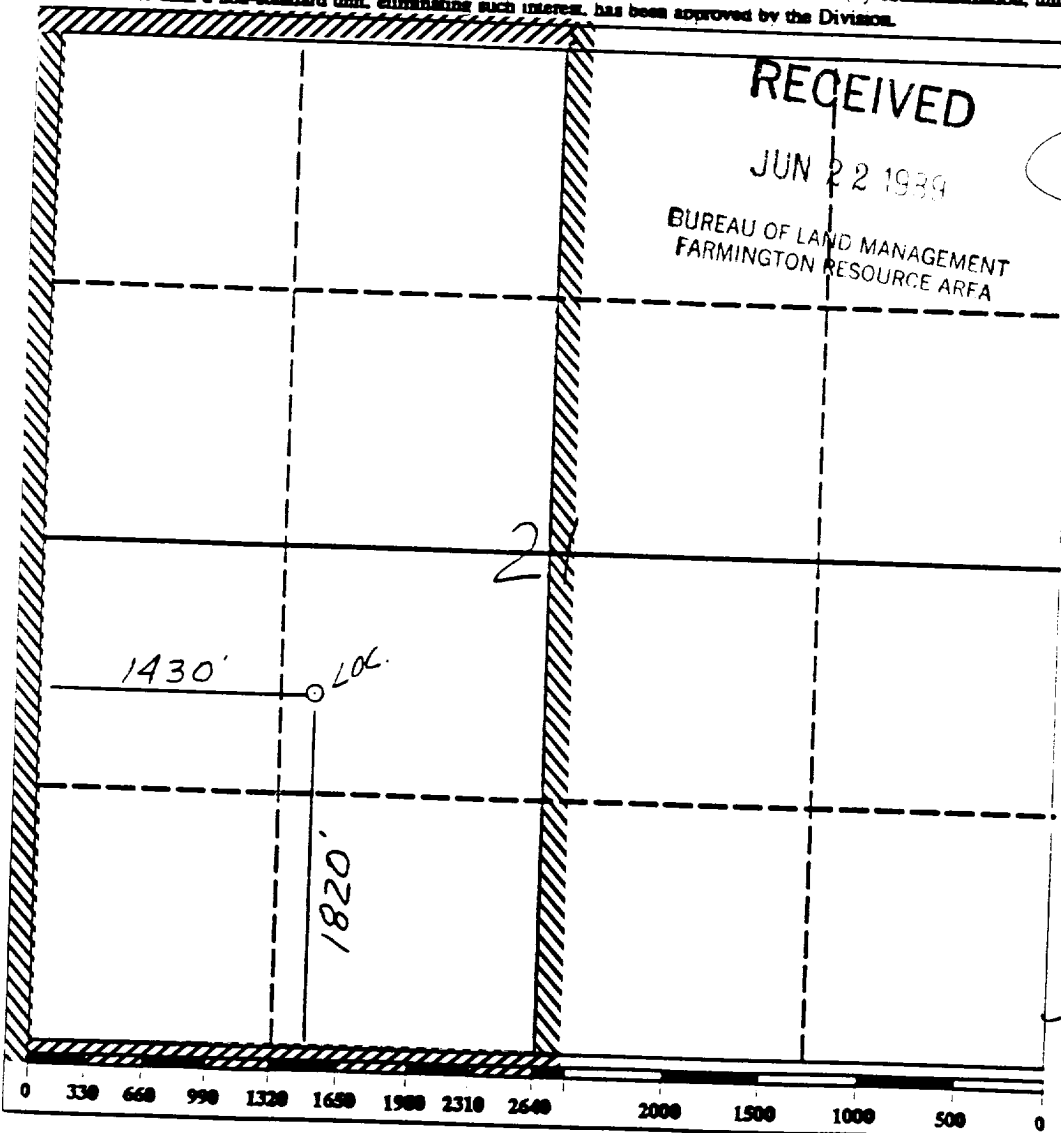
P.O. Box 2088
Santa Fe, New Mexico 87504-2088

WELL LOCATION AND ACREAGE DEDICATION PLAT

All Distances must be from the outer boundaries of the section

Operator <u>El Paso Natural Gas</u>		Lease <u>San Juan 30-0 Unit</u> (SF-080712A)		Well No. <u>471</u>
Unit Letter <u>H</u>	Section <u>21</u>	Township <u>30 North</u>	Range <u>6 West</u>	County <u>NMPM Rio Arriba</u>
Actual Footage Location of Well: <u>1820</u> feet from the <u>South</u> line and <u>1430</u> feet from the <u>West</u> line				
Ground level Elev. <u>6330'</u>	Producing Formation <u>Fruitland Coal Basin</u>		Pool <u>Basin</u>	Dedicated Acreage: <u>320</u> Acres

- Outline the acreage dedicated to the subject well by colored pencil or hatchure marks on the plat below.
- If more than one lease is dedicated to the well, outline each and identify the ownership thereof (both as to working interest and royalty).
- If more than one lease of different ownership is dedicated to the well, have the interest of all owners been consolidated by communitization, unitization, force-pooling, etc.?
☒ Yes ☐ No If answer is "yes" type of consolidation unitization
If answer is "no" list the owners and tract descriptions which have actually been consolidated. (Use reverse side of this form if necessary.)
No allowable will be assigned to the well until all interests have been consolidated (by communitization, unitization, force-pooling, or otherwise) or until a non-standard unit, eliminating such interest, has been approved by the Division.



OPERATOR CERTIFICATION

I hereby certify that the information contained herein is true and complete to best of my knowledge and belief.

Signature
Peggy Bradfield
Printed Name
Regulatory Affairs
Position
El Paso Natural Gas
Company
6-22-89
Date

SURVEYOR CERTIFICATION

I hereby certify that the well location shown on this plat was plotted from field notes actual surveys made by me or under my supervision, and that the same is true and correct to the best of my knowledge and belief.

Date Surveyed
6-22-89
Signature of Surveyor
Neale C. Edwards
Professional Surveyor
857
Certificate No.
6857

Well Name: 471 SAN JUAN 30-6 UNIT
Sec. 21 T30N R06W
BASIN FRUITLAND COAL

1820'S 1430'W
RIO ARriba NEW MEXICO
Elevation 6330'GL

Formation tops: Surface- SAN JOSE
Ojo Alamo- 2380
Kirtland- 2493
Fruitland- 2945
Fruitland Coal Top- 2990
Fruitland Coal Base- 3252
Intermediate TD- 2970
Total Depth- 3254
Pictured Cliffs- 3263

Logging Program: Mud logs from intermediate to total depth.

Mud Program:	Interval	Type	Weight	Visc.	Fl. Loss
	0 - 200	Spud	8.4 - 8.9	40-50	no control
	200 - 2970	Non-dispersed	8.4 - 9.1	30-60	no control
	2970 - 3254	Formation Water	8.4		no control

Casing Program:	Hole Size	Depth Interval	Csg. Size	Weight	Grade
	12 1/4"	0 - 200	9 5/8"	32.3#	H-40
	8 3/4"	0 - 2970	7"	20.0#	K-55
	6 1/4"	2920 - 3254	5 1/2"	15.5#	K-55
Tubing Program:		0 - 3254	2 7/8"	6.5#	J-55

Float Equipment: 9 5/8" surface casing - saw tooth guide shoe.

7" intermediate casing - guide shoe and self-fill insert float valve.
Three centralizers run every other joint above shoe. Run insert float
one joint above the guide shoe.

5 1/2" production casing - float shoe on bottom and a pre-drilled liner
run to the 7" casing with a minimum 50' overlap. Liner hanger is a
double slip grip type.

Wellhead Equipment: 9 5/8" x 7" x 2 7/8" x 11" 3000 psi xmas tree assembly.

Cementing:

9 5/8" surface casing - cement with 106 sacks of class "B" cement with 1/4#
flocele/sack and 3% calcium chloride (125 cu ft. of slurry, 100%
excess to circulate to surface). WOC 12 hours. Test casing to 600
psi for 30 minutes.

7" intermediate casing - lead with 31 sacks of 65/35 class "B" poz with 6%
gel, 2% calcium chloride and 1/2 cu ft. Perlite/sack (10.3 gallons of
water/sack) tail with 100 sacks of class "B" with 2% calcium chloride.
177 cu ft. of slurry, 100% excess to cover the Ojo Alamo. Run
temperature survey at 8 hours. WOC 12 hours. Test casing to 1500 psi
for 30 minutes.

5 1/2" liner - do not cement.

R-6-W

