

UNITED STATES
DEPARTMENT OF THE INTERIOR
BUREAU OF LAND MANAGEMENT

30-039-24717

APPLICATION FOR PERMIT TO DRILL, DEEPEN, OR PLUG BACK

1a. TYPE OF WORK DRILL	5. LEASE NUMBER NM-03416
1b. TYPE OF WELL GAS	6. IF INDIAN, ALL. OR TRIBE NAME
2. OPERATOR <i>Merrill Coal Inc.</i> EL PASO NATURAL GAS CO.	7. UNIT AGREEMENT NAME SAN JUAN 30-6 UNIT
3. ADDRESS & PHONE NO. OF OPERATOR P O BOX 4289 FARMINGTON, NM 87499	8. FARM OR LEASE NAME SAN JUAN 30-6 UNIT
4. LOCATION OF WELL 2480'N 1850'E	9. WELL NO. 403
10. FIELD, POOL, OR WILDCAT BASIN FRUITLAND COAL	11. SEC. T. R. M OR BLK. SEC. 9 T30N R06W NMPM
14. DISTANCE IN MILES FROM NEAREST TOWN 20 MILES FROM GOBERNADOR	12. COUNTY RIO ARRIBA
15. DISTANCE FROM PROPOSED LOCATION TO NEAREST PROPERTY OR LEASE LINE. 1850'	13. STATE NM
16. ACRES IN LEASE	17. ACRES ASSIGNED TO WELL E/320.00
18. DISTANCE FROM PROPOSED LOCATION TO NEAREST WELL DR. COMPL., OR APPLIED FOR ON THIS LEASE. 3000'	19. PROPOSED DEPTH 3025'
20. ROTARY OR CABLE TOOLS ROTARY	21. ELEVATIONS (DF, FT, GR, ETC.) 6217'GL
22. APPROX. DATE WORK WILL START	

RECEIVED
APR 23 1990
OIL CON. DIV.

This section is subject to restriction and approval of BLM. For permit to drill 3160-3 and appeal pursuant to 43 CFR 3160.4

23. PROPOSED CASING AND CEMENTING PROGRAM

*SEE OPERATIONS PLAN FOR THE PROPOSED WORK. THE OPERATIONS PLAN IS ATTACHED TO THIS APPLICATION UNDER THE TITLE "OPERATIONS REQUIREMENTS".

24. AUTHORIZED BY: *John Bradford*
REGULATORY AFFAIRS

DATE: *9-11-89*
APPROVED

PERMIT NO. _____ APPROVAL DATE _____
APPROVED BY _____ TITLE _____ DATE *APR 18 1990*
John S. Kelly
AREA MANAGER

NOTE: THIS FORMAT IS ISSUED IN LIEU OF US BLM FORM 3160-3.

341393
GEOGRAPHIC
MIG MOD JIC
E TON

Submit to Appropriate
District Office
State Lease - 4 copies
Fee Lease - 3 copies

State of New Mexico
Energy, Minerals and Natural Resources Department

Form C-102
Revised 1-1-89

OIL CONSERVATION DIVISION
P.O. Box 2088
Santa Fe, New Mexico 87504-2088

DISTRICT I
P.O. Box 1980, Hobbs, NM 88240

DISTRICT II
P.O. Drawer DD, Artesia, NM 88210

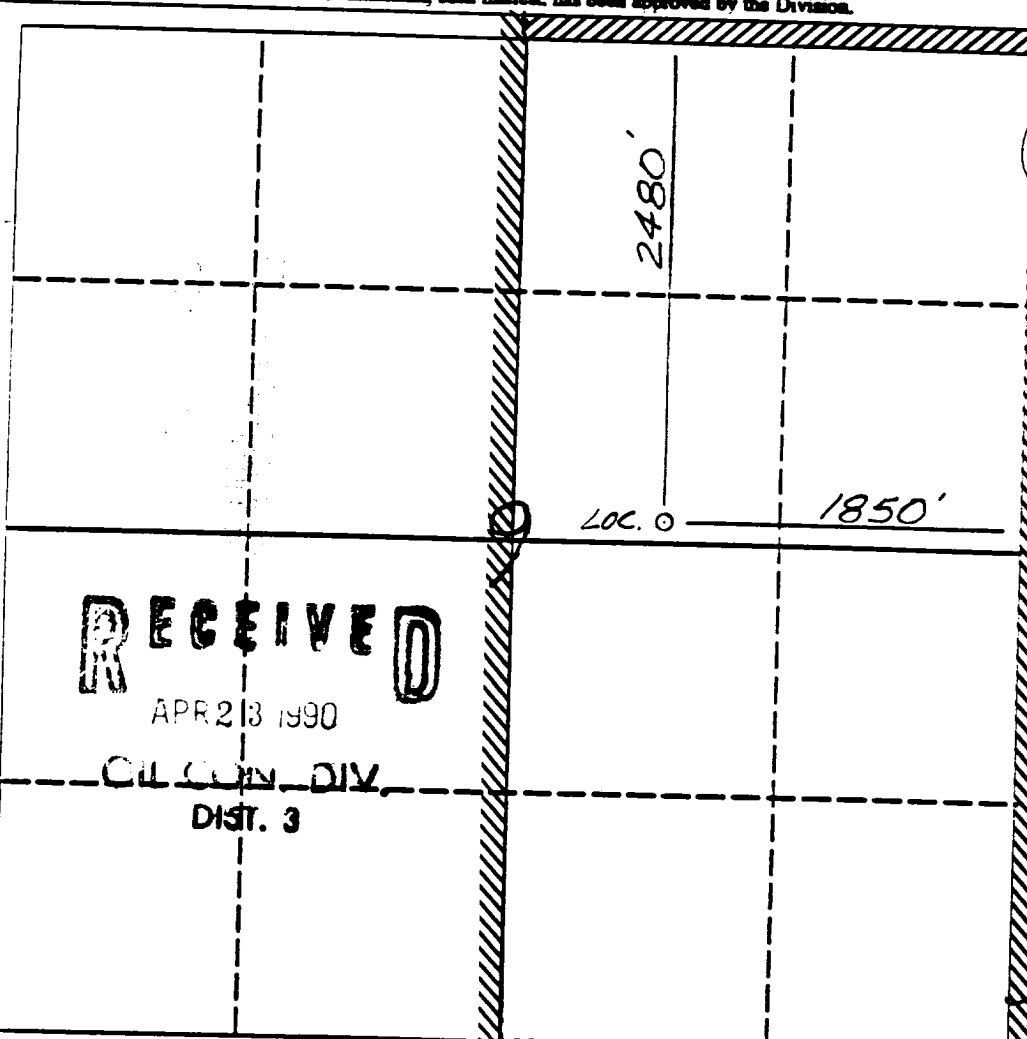
DISTRICT III
1000 Rio Brazos Rd., Aztec, NM 87410

WELL LOCATION AND ACREAGE DEDICATION PLAT

All Distances must be from the outer boundaries of the section

Operator <i>Meridian Oil, Inc.</i>		Lease (NM-03416)		Well No.
<i>El Paso Natural Gas</i>		San Juan 30-6 Unit		403
Unit Letter G	Section 9	Township 30 North	Range 6 West	County Rio Arriba
Actual Footage Location of Well: 2480 feet from the North line and 1850 feet from the East line				
Ground level Elev. 6217	Producing Formation Fruitland Coal	Pool Basin	Dedicated Acreage: 320 Acres	

1. Outline the acreage dedicated to the subject well by colored pencil or because marks on the plat below.
 2. If more than one lease is dedicated to the well, outline each and identify the ownership thereof (both as to working interest and royalty).
 3. If more than one lease of different ownership is dedicated to the well, have the interest of all owners been consolidated by communitization, unitization, force-pooling, etc.?
 - Yes No
 - If answer is "yes" type of consolidation unitization
- If answer is "no" list the owners and tract descriptions which have actually been consolidated. (Use reverse side of this form if necessary.)
- No allowable will be assigned to the well until all interests have been consolidated (by communitization, unitization, forced-pooling, or otherwise) or until a non-standard unit, eliminating such interest, has been approved by the Division.



OPERATOR CERTIFICATION

I hereby certify that the information contained herein is true and complete to the best of my knowledge and belief.

Peggy Bradfield
Signature

Peggy Bradfield
Printed Name

Regulatory Affairs
Position

El Paso Natural Gas
Company

Date

SURVEYOR CERTIFICATION

I hereby certify that the well location shown on this plat was plotted from field notes of actual surveys made by me or under my supervision, and that the same is true and correct to the best of my knowledge and belief. 8-7-89

Neale O. Edwards
Date Surveyed
Signature and Seal of Professional Surveyor

857
Professional Surveyor

Neale O. Edwards
Certificate No.

6857



Well Name: 403 SAN JUAN 30-6 UNIT 2480'N 1850'E
 Sec. 9 T30N R06W RIO ARRIBA NEW MEXICO
 BASIN FRUITLAND COAL Elevation 6217'GL

Formation tops: Surface- SAN JOSE
 Ojo Alamo- 2143
 Kirtland- 2349
 Fruitland- 2740
 Fruitland Coal Top- 2843
 Fruitland Coal Base- 3024
 Intermediate TD- 2823
 Total Depth- 3025
 Pictured Cliffs- 3027

Logging Program: Mud logs from intermediate to total depth.

Mud Program:	Interval	Type	Weight	Visc.	Fl. Loss
	0 - 200	Spud	8.4 - 8.9	40-50	no control
	200 - 2823	Non-dispersed	8.4 - 9.1	30-60	no control
	2823 - 3025	Formation Water	8.4		no control

Casing Program:	Hole Size	Depth Interval	Csg. Size	Weight	Grade
	12 1/4"	0 - 200	9 5/8"	32.3#	H-40
	8 3/4"	0 - 2823	7"	20.0#	K-55
	6 1/4"	2773 - 3025	5 1/2"	15.5#	K-55
Tubing Program:		0 - 3025	2 7/8"	6.5#	J-55

Float Equipment: 9 5/8" surface casing - saw tooth guide shoe.

7" intermediate casing - guide shoe and self-fill insert float valve. Three centralizers run every other joint above shoe. Run insert float one joint above the guide shoe.

5 1/2" production casing - float shoe on bottom and a pre-drilled liner run to the 7" casing with a minimum 50' overlap. Liner hanger is a double slip grip type.

Wellhead Equipment: 9 5/8" x 7" x 2 7/8" x 11" 3000 psi xmas tree assembly.

Cementing:

9 5/8" surface casing - cement with 106 sacks of class "B" cement with 1/4# flocele/sack and 3% calcium chloride (125 cu ft. of slurry, 100% excess to circulate to surface). WOC 12 hours. Test casing to 600 psi for 30 minutes.

7" intermediate casing - lead with 45 sacks of 65/35 class "B" poz with 6% gel, 2% calcium chloride and 1/2 cu ft. Perlite/sack (10.3 gallons of water/sack) tail with 100 sacks of class "B" with 2% calcium chloride. 204 cu ft. of slurry, 100% excess to cover the Ojo Alamo. Run temperature survey at 8 hours. WOC 12 hours. Test casing to 1500 psi for 30 minutes.

5 1/2" liner - do not cement.

SAN JUAN
30-6
UNIT
403

JAR

CANYON

PIPELINE

PIPELINE

Gas Well

Gas Well

Gas Well

Gas Well

Gas Well

Gas Well

Well

