

UNITED STATES
DEPARTMENT OF THE INTERIOR
GEOLOGICAL SURVEY

APPLICATION FOR PERMIT TO DRILL, DEEPEN, OR PLUG BACK

1a. TYPE OF WORK
DRILL ☒ DEEPEN ☐ PLUG BACK ☐

b. TYPE OF WELL
OIL WELL ☐ GAS WELL ☒ OTHER ☐

2. NAME OF OPERATOR
Blackwood & Nichols Co., Ltd.

3. ADDRESS OF OPERATOR
P.O.Box 1237, Durango, Colorado, 81302 -1237

4. LOCATION OF WELL (Report location clearly and in accordance with any State requirements.)*
At surface
1650' FNL - 1400' FEL
At proposed prod. zone
same

14. DISTANCE IN MILES AND DIRECTION FROM NEAREST TOWN OR POST OFFICE*
15 miles NE of Blanco, New Mexico

15. DISTANCE FROM PROPOSED*
LOCATION TO NEAREST
PROPERTY OR LEASE LINE, FT.
(Also to nearest drlg. unit line, if any) 990'

18. DISTANCE FROM PROPOSED LOCATION*
TO NEAREST WELL, DRILLING, COMPLETED,
OR APPLIED FOR, ON THIS LEASE, FT. 210'

16. NO. OF ACRES IN LEASE
2314.56

17. NO. OF ACRES ASSIGNED
TO THIS WELL E/ 320

19. PROPOSED DEPTH
3192'

20. ROTARY OR CABLE TOOLS
Rotary

21. ELEVATIONS (Show whether DF, RT, GR, etc.)
6311' GL

22. APPROX. DATE WORK WILL START*
May 15, 1990

This action is subject to technical and
procedural review pursuant to 43 CFR 3165.3
and appeal pursuant to 43 CFR 3165.4.

PROPOSED CASING AND CEMENTING PROGRAM

SIZE OF HOLE	SIZE OF CASING	WEIGHT PER FOOT	SETTING DEPTH	QUANTITY OF CEMENT
12 1/4"	9 5/8"	36 #	300'	295 cuft., circ. to surface
8 3/4"	7"	23 #	2960'	940 cuft., circ. to surface
6 1/4"	5 1/2"	17 #	2860 - 3192'	39 cuft., circ to liner top

Propose to spud in the San Jose formation. Drill a 12 1/4" surface hole to a TD of 300'. Run and cement surface casing with cement returns to surface. WOC 12 hours. Test to 600 psi/ 30 mins. Drill an 8 3/4" hole to a TD of 2960' using fresh water mud. No abnormal pressures or poisonous gases are anticipated. Run and cement intermediate casing with cement returns to surface. WOC 12 hours. Test to 1500 psi for 30 mins. Drill a 6 1/4" hole to a TD of 3192' using water and air. A mud logging unit will be used while drilling this interval. Run the production liner. The liner will be cemented if fracture stimulation is necessary.

RECEIVED

MAY 29 1990

OIL CON. DIV.

IN ABOVE SPACE DESCRIBE PROPOSED PROGRAM: If proposal is to deepen or plug back, give data on present production zone and proposed new productivity zone. If proposal is to drill or deepen directionally, give pertinent data on subsurface locations and measured and true vertical depths. Give blowout preventer program, if any.

24. SIGNED William F. Clark TITLE Operations Manager DATE 1 May 90

(This space for Federal or State office use)

PERMIT NO. _____ APPROVAL DATE _____

APPROVED BY _____ TITLE _____ DATE _____

CONDITIONS OF APPROVAL, IF ANY:

Hold C-104 til the #1403 is
plugged or converted to a
press. monitor well

*See Instructions On Reverse Side

MAY 24 1990
Ken Townsend
FOR AREA MANAGER

Submit to Appropriate
District Office
State Leases - 4 copies
For Leases - 3 copies

State of New Mexico
Energy, Minerals and Natural Resources Department

Form C-102
Revised 1-1-89

OIL CONSERVATION DIVISION

P.O. Box 2088
Santa Fe, New Mexico 87504-2088

DISTRICT I
P.O. Box 1980, Hobbs, NM 88240

DISTRICT II
P.O. Drawer DD, Artesia, NM 88210

DISTRICT III
1000 Rio Brazos Rd., Aztec, NM 87410

WELL LOCATION AND ACREAGE DEDICATION PLAT

All Distances must be from the outer boundaries of the section

Operator Blackwood & Nichols Co., LTD.		Lease Northeast Blanco Unit		Well No. 403R
Unit Letter G	Section 9	Township 30 North	Range 7 West	County Rio Arriba
Actual Footage Location of Well: 1650 feet from the North line and 1400 feet from the East line				
Ground level Elev. 6311'	Producing Formation Fruitland Coal		Pool Basin Fruitland Coal	Dedicated Acreage: 320 Acres

1. Outline the acreage dedicated to the subject well by colored pencil or hectare marks on the plat below.
2. If more than one lease is dedicated to this well, outline each and identify the ownership thereof (both as to working interest and royalty).
3. If more than one lease of different ownership is dedicated to the well, have the interest of all owners been consolidated by communitization, unitization, force-pooling, etc?
☒ Yes ☐ No If answer is "yes" type of consolidation Unitization
If answer is "no" list the owners and tract descriptions which have actually been consolidated. (Use reverse side of this form if necessary.)
No allowable will be assigned to the well until all interests have been consolidated (by communitization, unitization, forced-pooling, or otherwise) or until a non-standard unit, eliminating such interest, has been approved by the Division.

OPERATOR CERTIFICATION

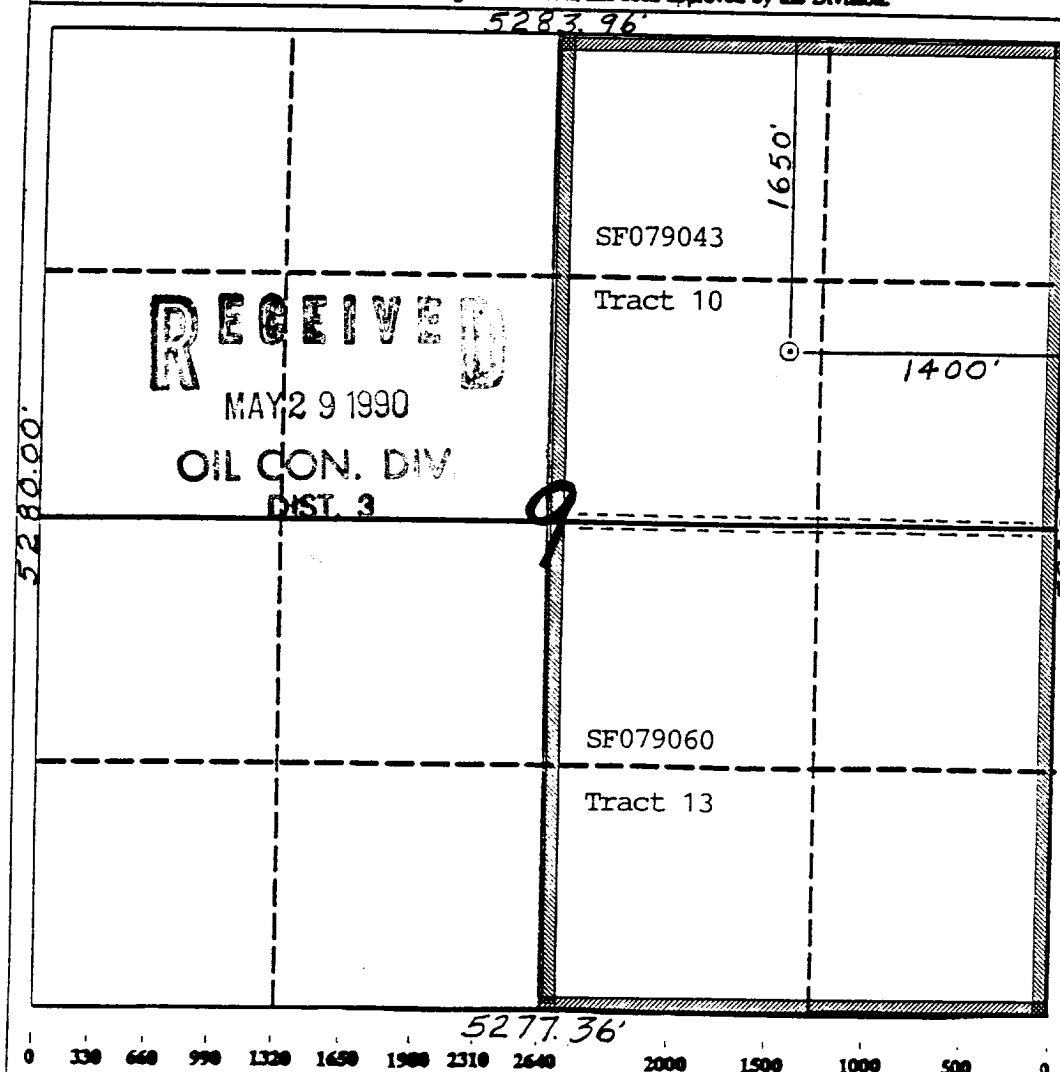
I hereby certify that the information contained herein is true and complete to the best of my knowledge and belief.

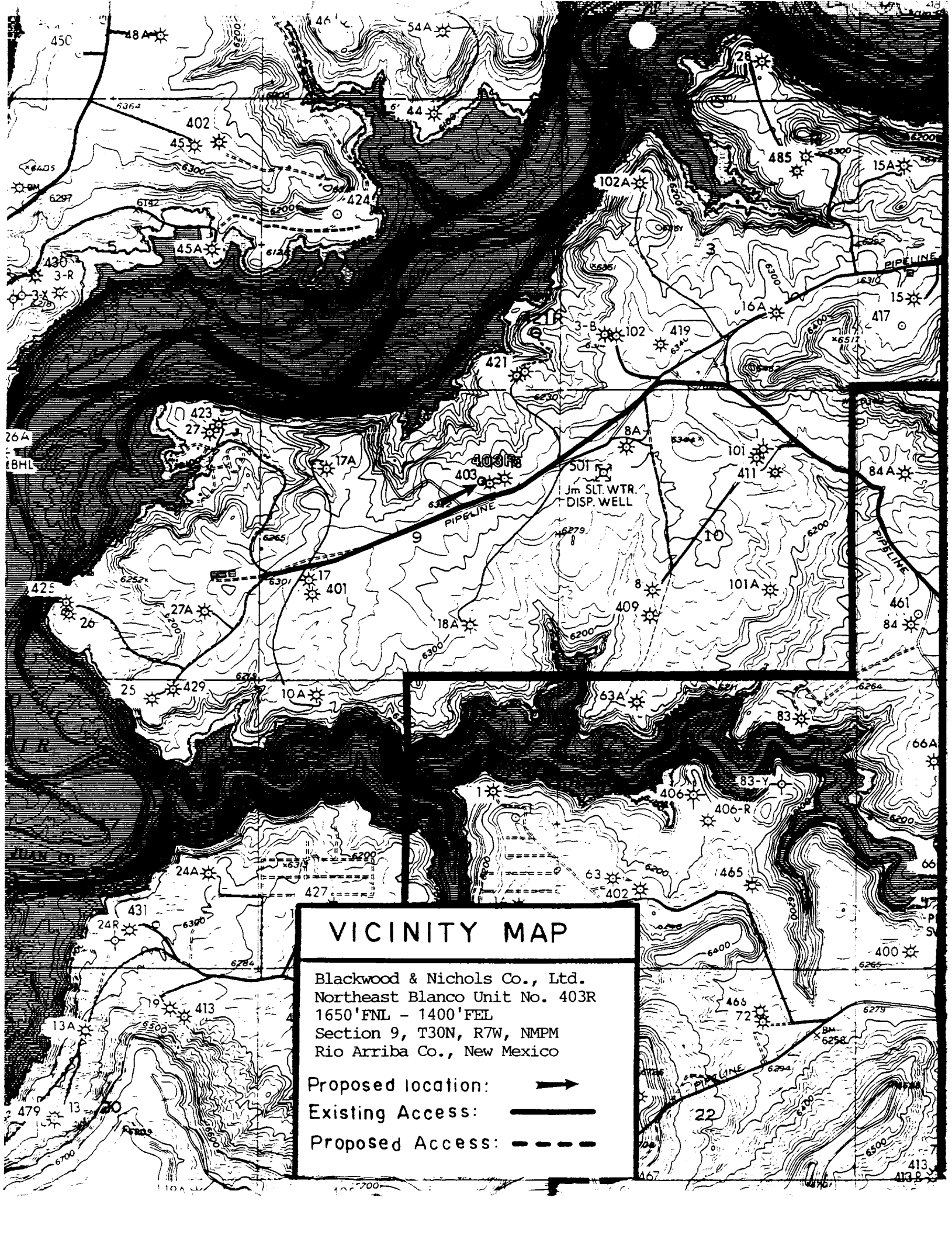
Signature: William F. Clark
Printed Name: William F. Clark
Position: Operations Manager
Company: Blackwood & Nichols Co., Ltd.
Date: May 1, 1990

SURVEYOR CERTIFICATION

I hereby certify that the well location shown on this plat was plotted from field notes of actual surveys made by me or under my supervision, and that the same is true and correct to the best of my knowledge and belief.



Date Surveyed: 4-25-90
Signature: Neale C. Edwards
Professional Surveyor
NEW MEXICO
6857
REGISTERED LAND SURVEYOR
Certificate No. 6857
Neale C. Edwards





VICINITY MAP

Blackwood & Nichols Co., Ltd.
Northeast Blanco Unit No. 403R
1650'FNL - 1400'FEL
Section 9, T30N, R7W, NMPM
Rio Arriba Co., New Mexico

Proposed location: 
Existing Access: 
Proposed Access: 