

Submit to Appropriate  
District Office  
State Leases - 6 copies  
Fee Leases - 5 copies

State of New Mexico  
Energy, Minerals and Natural Resources Department

Form C-101  
Revised 1-1-89

OIL CONSERVATION DIVISION

P.O. Box 2088  
Santa Fe, New Mexico 87504-2088

DISTRICT I  
P.O. Box 1980, Hobbs, NM 88240

DISTRICT II  
P.O. Drawer DD, Artesia, NM 88210

DISTRICT III  
1000 Rio Brazos Rd., Aztec, NM 87410

API NO. (assigned by OCD on New Wells)

31-039-24892

5. Indicate Type of Lease

STATE ☐ FEE ☒

6. State Oil & Gas Lease No.

APPLICATION FOR PERMIT TO DRILL, DEEPEN, OR PLUG BACK

1a. Type of Work:

DRILL ☒ RE-ENTER ☐ DEEPEN ☐ PLUG BACK ☐

b. Type of Well:

OIL WELL ☐ GAS WELL ☒ OTHER ☐ SINGLE ZONE ☒ MULTIPLE ZONE ☐

2. Name of Operator

Phillips Petroleum Company

3. Address of Operator

300 W. Arrington, Suite 200, Farmington, NM 87401

7. Lease Name or Unit Agreement Name

San Juan 30-5 Unit

8. Well No.

227

9. Pool name or Wildcat

Basin Fruitland Coal

4. Well Location

Unit Letter A : 988 Feet From The North Line and 1212 Feet From The East Line

Section 28

Township 30-N

Range 5-W

NMPM Rio Arriba

County

10. Proposed Depth

3240' (+)

11. Formation

Fruitland

12. Rotary or C.T.

Rotary

13. Elevations (Show whether DF, RT, GR, etc.)

6481' (GL Unprepared)

14. Kind & Status Plug. Bond

Blanket

15. Drilling Contractor

Advise Later

16. Approx. Date Work will start

Upon Approval

17.

PROPOSED CASING AND CEMENT PROGRAM

SIZE OF HOLE	SIZE OF CASING	WEIGHT PER FOOT	SETTING DEPTH	SACKS OF CEMENT	EST. TOP
12-1/4"	9-5/8"	36#, K-55	250'	250 Sxs	Circ to Surf
8-3/4"	7"	23#, K-55	3155'	650 Sxs	Circ to Surf
6-1/8"	5-1/2"	15.5# or 23#	3055'-3240'		*

\*If the coal is cleated, a 5-1/2", 23#, P-110 liner will be run in the open hole without being cemented.

\*If the coal is not cleated, the well will be stimulated and a 5-1/2", 15.5#, J-55 liner will be run without being cemented.

RECEIVED

AUG 22 1990

Use mud additives as required for control.

BOP Equipment: See attached schematic (Fig. 7-9 or 7-10)

OIL CON. DIV  
DIST. 3

IN ABOVE SPACE DESCRIBE PROPOSED PROGRAM: IF PROPOSAL IS TO DEEPEN OR PLUG BACK, GIVE DATA ON PRESENT PRODUCTIVE ZONE AND PROPOSED NEW PRODUCTIVE ZONE. GIVE BLOWOUT PREVENTER PROGRAM, IF ANY.

I hereby certify that the information above is true and complete to the best of my knowledge and belief.

SIGNATURE

L. M. Sanders

TITLE

Supv. Regulatory Affairs

DATE

8/17/90

TYPE OR PRINT NAME L. M. Sanders

TELEPHONE NO.

(This space for State Use)

APPROVED BY

Ernie Dirsch

TITLE

DEPUTY OIL & GAS INSPECTOR, DIST. #3

DATE

AUG 24 1990

CONDITIONS OF APPROVAL, IF ANY:

APPROVAL EXPIRES 2-24-91  
UNLESS DRILLING IS COMMENCED.  
SPUD NOTICE MUST BE SUBMITTED  
WITHIN 10 DAYS.

Submit to Appropriate  
District Office  
State Lease - 4 copies  
Fee Lease - 3 copies

State of New Mexico  
Energy, Minerals and Natural Resources Department

Form C-102  
Revised 1-1-89

OIL CONSERVATION DIVISION

P.O. Box 2088  
Santa Fe, New Mexico 87504-2088

DISTRICT I  
P.O. Box 1980, Hobbs, NM 88240

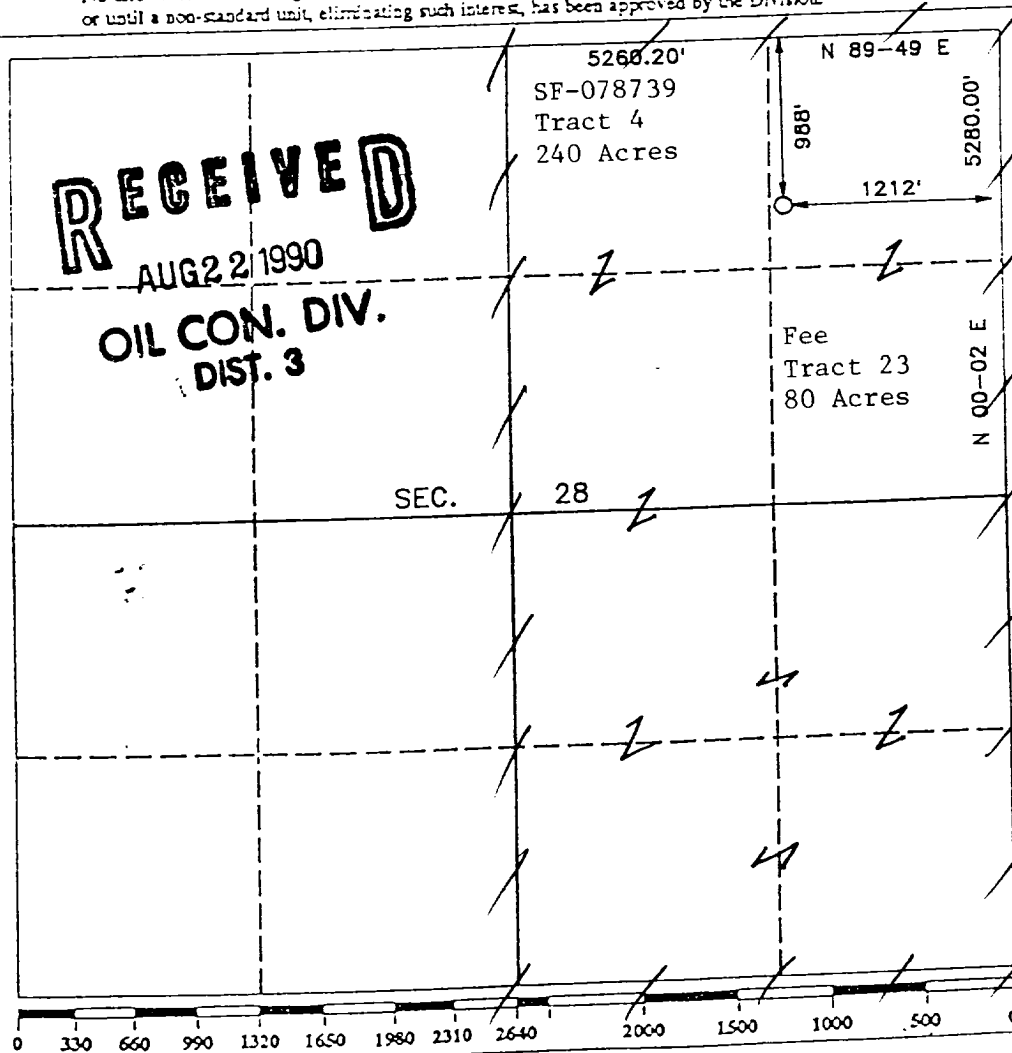
DISTRICT II  
P.O. Drawer DD, Artesia, NM 88210

DISTRICT III  
1000 Rio Brazos Rd., Aztec, NM 87410

WELL LOCATION AND ACREAGE DEDICATION PLAT  
All Distances must be from the outer boundaries of the section

Operator <b>PHILLIPS PETROLEUM</b>		Lease <b>SAN JUAN 30-5 UNIT</b>		Well No. <b>227</b>
Unit Letter <b>A</b>	Section <b>28</b>	Township <b>1.30 N.</b>	Range <b>R.5 W.</b>	County <b>RIO ARriba COUNTY</b>
Actual Footage Location of Well: <b>988</b> feet from the <b>NORTH</b> line and <b>1212</b> feet from the <b>EAST</b> line				
Ground level Elev. <b>6481</b>	Producing Formation <b>Fruitland</b>	Pool <b>Basin Fruitland Coal</b>	Dedicated Acreage: <b>320 Ac.</b> Acres	

- Outline the acreage dedicated to the subject well by colored pencil or hatchure marks on the plat below.
- If more than one lease is dedicated to the well, outline each and identify the ownership thereof (both as to working interest and royalty).
- If more than one lease of different ownership is dedicated to the well, have the interest of all owners been consolidated by communitization, unitization, force-pooling, etc.?  
☒ Yes ☐ No If answer is "yes" type of consolidation Unitization  
If answer is "no" list the owners and tract descriptions which have actually been consolidated. (Use reverse side of this form if necessary.)  
No allowable will be assigned to the well until all interests have been consolidated (by communitization, unitization, forced-pooling, or otherwise) or until a non-standard unit, eliminating such interest, has been approved by the Division.



OPERATOR CERTIFICATION

I hereby certify that the information contained herein is true and complete to the best of my knowledge and belief.

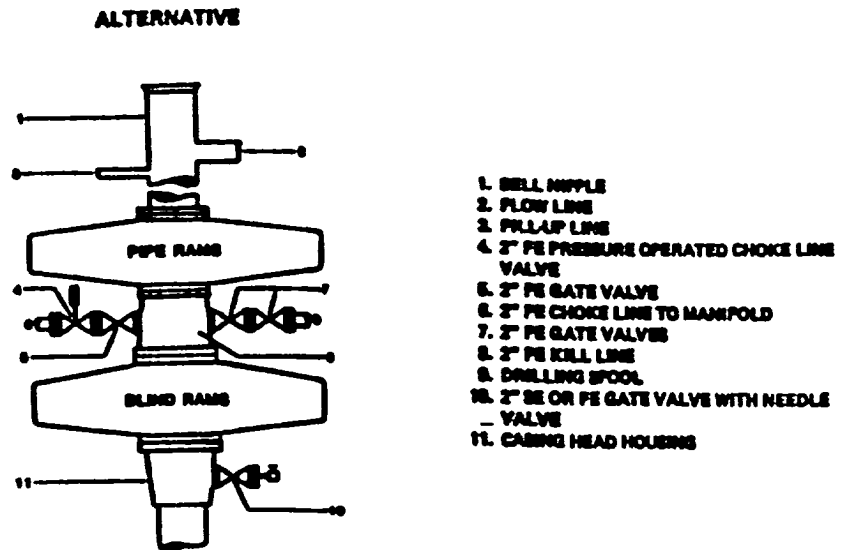
Signature  
*L. M. Sanders*  
Printed Name  
**L. M. Sanders**  
Position  
**Supv., Regulatory Affairs**  
Company  
**Phillips Petroleum Company**  
Date  
**August 17, 1990**

SURVEYOR CERTIFICATION

I hereby certify that the well location shown on this plat was plotted from field notes actual surveys made by me or under supervision, and that the same is true correct to the best of my knowledge and belief.

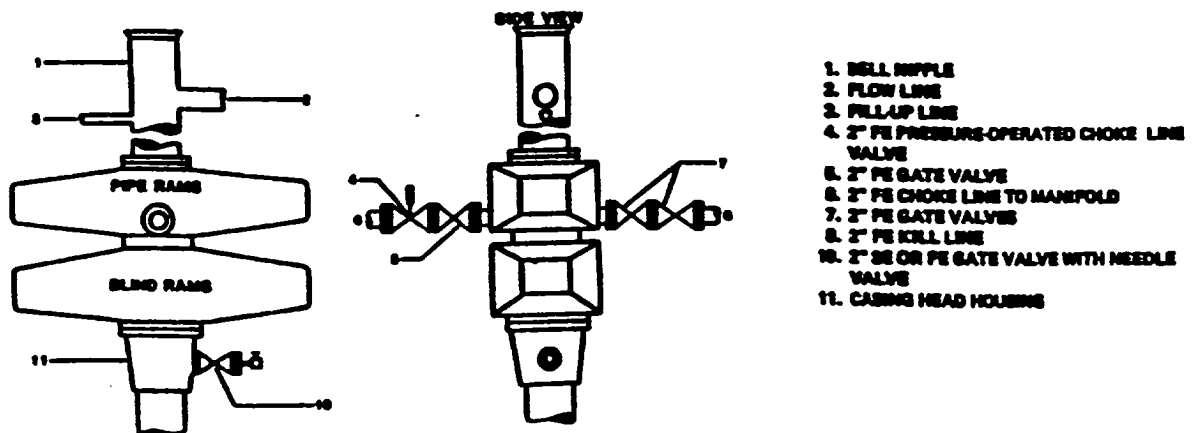
Date Surveyed  
**JULY 10, 1990**  
Signature  
*Edward D. Daggett*  
Professional Seal  
**EDWARD D. DAGGETT**  
**REGISTERED PROFESSIONAL LAND SURVEYOR**  
Certificate No.  
**9678**  
Registered Professional  
Land Surveyor

# FIELD PRACTICES AND STANDARDS



NOTE: THE DRILLING SPOOL MAY BE LOCATED BELOW BOTH SETS OF RAMS IF A DOUBLE PREVENTER IS USED AND IT DOES NOT HAVE SUITABLE OUTLETS BETWEEN RAMS

**Figure 7-9. Standard Hydraulic Blowout Preventer Assembly  
3 M Working Pressure Alternative 1**



**Figure 7-10. Standard Hydraulic Blowout Preventer Assembly  
3 M Working Pressure Alternative 3 (without Drilling Spool)**