

UNITED STATES  
DEPARTMENT OF THE INTERIOR  
BUREAU OF LAND MANAGEMENT

APPLICATION FOR PERMIT TO DRILL, DEEPEN, OR PLUG BACK

1a. TYPE OF WORK  
DRILL ☒ DEEPEN ☐ PLUG BACK ☐  
b. TYPE OF WELL  
OIL WELL ☐ GAS WELL ☒ OTHER ☐  
SINGLE ZONE ☒ MULTIPLE ZONE ☐  
2. NAME OF OPERATOR  
Blackwood & Nichols Co., Ltd.  
3. ADDRESS OF OPERATOR  
P. O. Box 1237, Durango, Co. 81302  
4. LOCATION OF WELL (Report location clearly and in accordance with any State requirements.)\*  
At surface  
350' FNL, 460' FEL  
At proposed prod. zone  
14. DISTANCE IN MILES AND DIRECTION FROM NEAREST TOWN OR POST OFFICE\*  
10 miles  
15. DISTANCE FROM PROPOSED\*  
LOCATION TO NEAREST  
PROPERTY OR LEASE LINE, FT.  
(Also to nearest drig. unit line, if any)  
16. NO. OF ACRES IN LEASE  
2236.4  
17. NO. OF ACRES ASSIGNED  
TO THIS WELL  
E/ 320  
18. DISTANCE FROM PROPOSED LOCATION\*  
TO NEAREST WELL, DRILLING, COMPLETED,  
OR APPLIED FOR, ON THIS LEASE, FT.  
3560' 3197  
20. ROTARY OR CABLE TOOLS  
Rotary  
21. ELEVATIONS (Show whether DF, RT, GR, etc.)  
6298' GR  
22. APPROX. DATE WORK WILL START\*  
July 15, 1990

5. LEASE DESIGNATION AND SERIAL NO.  
SF079060  
6. IF INDIAN, ALLOTTEE OR TRIBE NAME  
7. UNIT AGREEMENT NAME  
Northeast Blanco Unit  
8. FARM OR LEASE NAME  
Northeast Blanco Unit  
9. WELL NO.  
413R  
10. FIELD AND POOL, OR WILDCAT  
Basin Fruitland Coal  
11. SEC., T., R., M., OR BLK.  
AND SURVEY OR AREA  
Section 20, T30N, R7W  
12. COUNTY OR PARISH  
Rio Arriba  
13. STATE  
NM

This action is subject to technical and  
procedural review pursuant to 43 CFR 3165.3  
and appeal pursuant to 43 CFR 3165.4.

PROPOSED CASING AND CEMENTING PROGRAM

SIZE OF HOLE	SIZE OF CASING	WEIGHT PER FOOT	SETTING DEPTH	QUANTITY OF CEMENT
12-1/4"	9-5/8"	36.0#, K-55	300'	200 sx
8-3/4"	7"	23.0#, K-55	3560' 3197	450 sx Howco Lite + 100 sx Neat

Blackwood & Nichols proposes to drill a Fruitland Coal well to further develop the Northeast Blanco Unit. 7" casing will be topset above the coal zones using a low solids mud with sufficient weight for well control. Then an uncemented 5-1/2" liner will be set through the Fruitland Coal zones. Well control will be a 6" series 900 BOP, rotating head, and sufficient kill and bleed off lines. This APD also requests right-of-way for the gas and water pipelines. Attached you will find:

1. C-102
2. Proposed Access Map
3. Drilling Pad Layout
4. Map of Area Wells
5. Onshore Drilling Program
6. Surface Use Program
7. BOP Diagram
8. Production Facilities Layout

Surface Ownership: Fee, BPOE Lodge #1747, Farmington, New Mexico

IN ABOVE SPACE DESCRIBE PROPOSED PROGRAM: If proposal is to deepen or plug back, give data on present productive zone and proposed new productive zone. If proposal is to drill or deepen directionally, give pertinent data on subsurface locations and measured and true vertical depths. Give blowout preventer program, if any.

SIGNED William F. Clark TITLE Operations Manager DATE 22 June 90

(This space for Federal or State office use)

PERMIT NO.

APPROVAL DATE

APPROVED BY OCT 1 1990

CONDITIONS OF APPROVAL, IF ANY:

TITLE

OIL CON. DIV.

NMOCD

\*See Instructions On Reverse Side

Title 18 U.S.C. Section 1001, makes it a crime for any person knowingly and willfully to make to any department or agency of the United States any false, fictitious or fraudulent statements or representations as to any matter within its jurisdiction.

# OIL CONSERVATION DIVISION

P.O. Box 2088  
Santa Fe, New Mexico 87504-2088

DISTRICT I  
P.O. Box 1980, Hobbs, NM 88240

DISTRICT II  
P.O. Drawer DD, Artesia, NM 88210

DISTRICT III  
1000 Rio Brazos Rd., Aztec, NM 87410

## WELL LOCATION AND ACREAGE DEDICATION PLAT

All Distances must be from the outer boundaries of the section

Operator <b>Blackwood &amp; Nichols Co., LTD.</b>		Lease <b>Northeast Blanco Unit</b>		Well No. <b>413 R</b>
Unit Letter <b>A</b>	Section <b>20</b>	Township <b>30 North</b>	Range <b>7 West</b>	County <b>Rio Arriba</b>
Actual Footage Location of Well: <b>350</b> feet from the <b>North</b> line and <b>460</b> feet from the <b>East</b> line				
Ground level Elev. <b>6298'</b>	Producing Formation <b>Fruitland</b>		Pool <b>Basin Fruitland Coal</b>	Dedicated Acreage: <b>320 Acres</b>

- Outline the acreage dedicated to the subject well by colored pencil or hachure marks on the plat below.
- If more than one lease is dedicated to the well, outline each and identify the ownership thereof (both as to working interest and royalty).
- If more than one lease of different ownership is dedicated to the well, have the interest of all owners been consolidated by communitization, unitization, force-pooling, etc.?  
☒ Yes ☐ No If answer is "yes" type of consolidation Unitization  
If answer is "no" list the owners and tract descriptions which have actually been consolidated. (Use reverse side of this form if necessary.)  
No allowable will be assigned to the well until all interests have been consolidated (by communitization, unitization, forced-pooling, or otherwise) or until a non-standard unit, eliminating such interest, has been approved by the Division.

### OPERATOR CERTIFICATION

I hereby certify that the information contained herein is true and complete to the best of my knowledge and belief.

Signature

*William F. Clark*

Printed Name

William F. Clark

Position

Operations Manager

Company

Blackwood & Nichols Co.

Date

June 22, 1990

### SURVEYOR CERTIFICATION

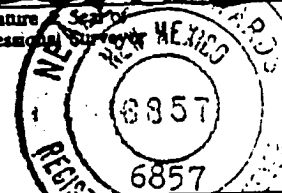
I hereby certify that the well location shown on this plat was plotted from field notes of actual surveys made by me or under my supervision, and that the same is true and correct to the best of my knowledge and belief. 6-11-90

Date Surveyed

*[Signature]*

Signature

Professional Surveyor



Certificate

Neale Edwards

\*Non-standard  
due to terrain  
and archeology.

RECEIVED

OCT 1 1990

OIL CON. DIV.  
DIST. 3

20

5281.32'

0 330 660 990 1320 1650 1980 2310 2640 2970 3300 3630 3960 4290 4620 4950 5280

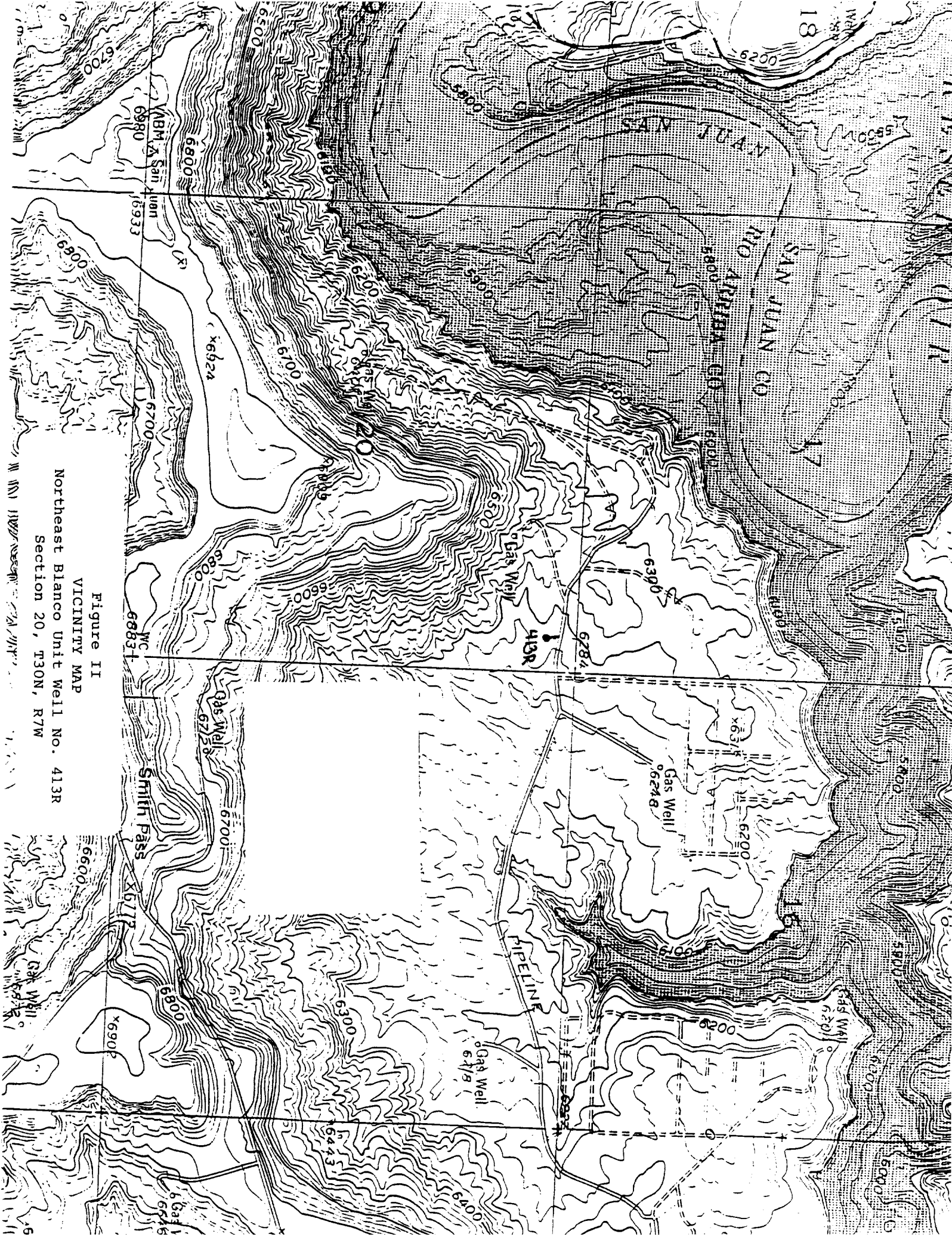


Figure II  
VICINITY MAP  
Northeast Blanco Unit Well No. 413R  
Section 20, T30N, R7W