

UNITED STATES
DEPARTMENT OF THE INTERIOR
BUREAU OF LAND MANAGEMENT

FORM APPROVED
Budget Bureau No. 1004-0135
Expires: September 30, 1990

SUNDRY NOTICES AND REPORTS ON WELLS

Do not use this form for proposals to drill, deepen or reentry to a different reservoir.
Use "APPLICATION FOR PERMIT-" for such proposals.

RECEIVED

MAR -7 PM 4:16

SUBMIT IN TRIPLICATE 019 FARMINGTON, N.M.

1. Type of Well: oil well _____ gas well **X** other _____

2. Name of Operator: Blackwood & Nichols Co., Ltd.

3. Address of Operator: P.O. Box 1237, Durango, CO 81302-1237

4. Location of Well: (Footage, Sec., T., R., M., or Survey Description)

Surface: 2560' FSL, 1695' FML Bottomhole: 1624' FML, 71' FEL
Section 20, T30N, R7W Section 19, T30N, R7W

5. Lease Designation & Serial #

NM 03845

6. If Indian, Allottee/Tribe Name

7. If Unit or CA, Agmt. Design.:

Northeast Blanco Unit

8. Well Name and No.:

N.E.B.U.# 475

9. API Well No.:

30-039-24466

10. Field & Pool/Expltry Area:

Basin Fruitland Coal

11. County or Parish, State:

Rio Arriba, New Mexico

12. CHECK APPROPRIATE BOX(s) TO INDICATE NATURE OF NOTICE, REPORT, OR OTHER DATA

TYPE OF SUBMISSION	TYPE OF ACTION
<input type="checkbox"/> Notice of Intent	<input type="checkbox"/> Abandonment
<input checked="" type="checkbox"/> Subsequent Report	<input type="checkbox"/> Recompletion
<input type="checkbox"/> Final Abandonment Notice	<input type="checkbox"/> Plugging Back
	<input type="checkbox"/> Casing Repair
	<input type="checkbox"/> Altering Casing
	<input type="checkbox"/> Other:
	(Note: Report results of multiple completion on Well Completion or Recompletion Report and Log form.)
	<input type="checkbox"/> Change of Plans
	<input checked="" type="checkbox"/> New Construction
	<input type="checkbox"/> Non-Routine Fracturing
	<input type="checkbox"/> Water Shut-Off
	<input type="checkbox"/> Conversion to Injection

13. DESCRIBE PROPOSED OR COMPLETED OPERATIONS (Clearly state all pertinent details, and give pertinent dates, including estimated date of starting any proposed work. If well is directionally drilled, give subsurface locations and measured and true vertical depths for all markers and zones pertinent to this work.)*

2-07-90 Spud 14-3/4" surface hole at 5:00 a.m., 2-7-91.

2-08-90 Drill to 300'. Run 7 jts (282.52') 10-3/4" 40.5# WC50 8rd ST&C Lone Star casing, set at 296.52'. Run sawtooth guide shoe on bottom. Cement with 285 sx (336 cf) Class B with 2% CaCl₂ with 1/4 #/sk flocele. Circulate 29 Bbls cement to surface. Plug down at 7:40 p.m., 2-07-91.

2-09-91 Nipple up and test BOP to 600 psi - held OK. Tag cement at 235' and drill same to 300'.

Continued on attached pages

14. I hereby certify that the foregoing is true and correct.

Signed: R.W. Williams ROY W. WILLIAMS

Title: ADMINISTRATIVE MANAGER

Date: 3/6/91

(This space for Federal or State office use)

Approved By _____ Title _____
Conditions of approval, if any:

ACCEPTED FOR RECORD

MAR 21 1991

Title 18 U.S.C. Section 1001, makes it a crime for any person knowingly and willfully furnish to any agency or the United States any false, fictitious, or fraudulent statements or representations as to any matter within its jurisdiction.

NMOCD

10 11 12 13 14 15 16 17 18 19 20 21 22 23 24 25 26 27 28 29 30 31 32 33 34 35 36 37 38 39 40 41 42 43 44 45 46 47 48 49 50 51 52 53 54 55 56 57 58 59 60 61 62 63 64 65 66 67 68 69 70 71 72 73 74 75 76 77 78 79 80 81 82 83 84 85 86 87 88 89 90 91 92 93 94 95 96 97 98 99 100 101 102 103 104 105 106 107 108 109 110 111 112 113 114 115 116 117 118 119 120 121 122 123 124 125 126 127 128 129 130 131 132 133 134 135 136 137 138 139 140 141 142 143 144 145 146 147 148 149 150 151 152 153 154 155 156 157 158 159 160 161 162 163 164 165 166 167 168 169 170 171 172 173 174 175 176 177 178 179 180 181 182 183 184 185 186 187 188 189 190 191 192 193 194 195 196 197 198 199 200 201 202 203 204 205 206 207 208 209 210 211 212 213 214 215 216 217 218 219 220 221 222 223 224 225 226 227 228 229 230 231 232 233 234 235 236 237 238 239 240 241 242 243 244 245 246 247 248 249 250 251 252 253 254 255 256 257 258 259 260 261 262 263 264 265 266 267 268 269 270 271 272 273 274 275 276 277 278 279 280 281 282 283 284 285 286 287 288 289 290 291 292 293 294 295 296 297 298 299 300 301 302 303 304 305 306 307 308 309 310 311 312 313 314 315 316 317 318 319 320 321 322 323 324 325 326 327 328 329 330 331 332 333 334 335 336 337 338 339 340 341 342 343 344 345 346 347 348 349 350 351 352 353 354 355 356 357 358 359 360 361 362 363 364 365 366 367 368 369 370 371 372 373 374 375 376 377 378 379 380 381 382 383 384 385 386 387 388 389 390 391 392 393 394 395 396 397 398 399 400 401 402 403 404 405 406 407 408 409 410 411 412 413 414 415 416 417 418 419 420 421 422 423 424 425 426 427 428 429 430 431 432 433 434 435 436 437 438 439 440 441 442 443 444 445 446 447 448 449 450 451 452 453 454 455 456 457 458 459 460 461 462 463 464 465 466 467 468 469 470 471 472 473 474 475 476 477 478 479 480 481 482 483 484 485 486 487 488 489 490 491 492 493 494 495 496 497 498 499 500 501 502 503 504 505 506 507 508 509 510 511 512 513 514 515 516 517 518 519 520 521 522 523 524 525 526 527 528 529 530 531 532 533 534 535 536 537 538 539 540 541 542 543 544 545 546 547 548 549 550 551 552 553 554 555 556 557 558 559 560 561 562 563 564 565 566 567 568 569 570 571 572 573 574 575 576 577 578 579 580 581 582 583 584 585 586 587 588 589 590 591 592 593 594 595 596 597 598 599 600 601 602 603 604 605 606 607 608 609 610 611 612 613 614 615 616 617 618 619 620 621 622 623 624 625 626 627 628 629 630 631 632 633 634 635 636 637 638 639 640 641 642 643 644 645 646 647 648 649 650 651 652 653 654 655 656 657 658 659 660 661 662 663 664 665 666 667 668 669 670 671 672 673 674 675 676 677 678 679 680 681 682 683 684 685 686 687 688 689 690 691 692 693 694 695 696 697 698 699 700 701 702 703 704 705 706 707 708 709 710 711 712 713 714 715 716 717 718 719 720 721 722 723 724 725 726 727 728 729 730 731 732 733 734 735 736 737 738 739 740 741 742 743 744 745 746 747 748 749 750 751 752 753 754 755 756 757 758 759 760 761 762 763 764 765 766 767 768 769 770 771 772 773 774 775 776 777 778 779 780 781 782 783 784 785 786 787 788 789 790 791 792 793 794 795 796 797 798 799 800 801 802 803 804 805 806 807 808 809 810 811 812 813 814 815 816 817 818 819 820 821 822 823 824 825 826 827 828 829 830 831 832 833 834 835 836 837 838 839 840 841 842 843 844 845 846 847 848 849 850 851 852 853 854 855 856 857 858 859 860 861 862 863 864 865 866 867 868 869 870 871 872 873 874 875 876 877 878 879 880 881 882 883 884 885 886 887 888 889 890 891 892 893 894 895 896 897 898 899 900 901 902 903 904 905 906 907 908 909 910 911 912 913 914 915 916 917 918 919 920 921 922 923 924 925 926 927 928 929 930 931 932 933 934 935 936 937 938 939 940 941 942 943 944 945 946 947 948 949 950 951 952 953 954 955 956 957 958 959 960 961 962 963 964 965 966 967 968 969 970 971 972 973 974 975 976 977 978 979 980 981 982 983 984 985 986 987 988 989 990 991 992 993 994 995 996 997 998 999 1000 1001 1002 1003 1004 1005 1006 1007 1008 1009 1010 1011 1012 1013 1014 1015 1016 1017 1018 1019 1020 1021 1022 1023 1024 1025 1026 1027 1028 1029 1030 1031 1032 1033 1034 1035 1036 1037 1038 1039 1040 1041 1042 1043 1044

2-10-91 Made 204'. At 553' MD and 552' TVD inclination = 7.3° @ N62.3° W, 13' horizontal displacement.

2-11-91 Made 546'. At 1125' MD and 1045.64' TVD, inclination = 49.43° @ N63.5° W, 274.70' horizontal displacement.

2-12-91 Made 412'. Drill to 1162' MD @ 51.5° inclination. POOH, change out BHA. TIH, drill to 1537' MD, MWD readings erratic. Circulate and check MWD. POOH to change MWD. At 1537' MD and 1295.45' TVD, azimuth = N62.3° W, 602.12' horizontal displacement.

2-13-91 Made 408'. TIH with new MWD, getting erratic readings. POOH, install single shot baffle plate. TIH, run single shot survey at 1440'. Single shot survey 53.5° @ N 59.5° W. MWD and single shot checking OK. Plan to run single shot periodically to check MWD. Resume drilling. At 1945' MD and 1546.6' TVD, azimuth = N 61.28° W, inclination = 51.6°, horizontal displacement = 923.3'.

2-14-91 Made 545'. Drill, run single shot survey at 2002': 52° inclination @ N 58.5° W. Continue drilling. At 2455' MD and 1863.64' TVD, azimuth = N 60.5° W, inclination = 51.9°, horizontal displacement = 1322.45'.

2-15-91 Made 235'. Drill, run single shot survey to bottom. TOOH, change out BHA. Run single shot survey misrun. TIH, hit bridges 14 stands off bottom. LD 28 jts DP. Ream and wash to bottom. Projected to bit at 2725' MD and 2032.48' TVD, inclination = 52°, azimuth = N 60.11° W, horizontal displacement = 1532.89'.

2-16-91 TIH. Ream and wash. MWD began giving erratic readings. Ream and wash to TD, run single shot @ 2620, #1: inclination = 53°, N 53.5° W, called Casper for new 90° compass for single shot. TOOH with 20 stands to benchmark MWD and single shot tool. Survey @ 1440' with single shot: inclination = 53.5°, N 59.5° W. MWD checked with single shot @ 1440'. TIH and WO 90° compass while circulating and conditioning mud. Run new single shot survey @ 2620': inclination = 53°, N 52.5° W. Circulate and build mud volume. POOH and PU additional monel DC to BHA for maximum protection for single shot survey. TIH.

2-17-91 Circulate. Finish TIH. Circulate bottoms up. Run single shot survey: inclination = 53.5°, N 53.5° W. Single shot survey puts last 500 feet of MWD readings in doubt. Wait on multi-shot survey tool.

2-18-91 Circulate at TD. Wait on multi shot survey - make up same. Drop and pump to bottom. Take multi-shot survey from 2627' to 365' MD. RIH with RR bit, DC's, HWP, jars, and DP to TD. Circulate and build mud volume. Wait on MWD equipment. Previous wellbore parameters 2725' MD, 2032.5' TVD N 60.1° W, 1532.9' horizontal displacement. Corrected wellbore parameters 2725' MD, 2015.3' TVD N 60.3° W, 1555.4' horizontal displacement.

2-19-90 Circulate, mix mud, wait on MWD equipment. TOH, wait on MWD equipment. Pick up new BHA (OAL = 329.15'; weight = 30,000#), TIH. Run surveys to check BHA - OK. Drill. Made 174'. At 2827' MD and 2080.47' TVD, azimuth = N 59.7° W, inclination = 47.6°, horizontal displacement = 1633.10'. At 2909' MD and 2138.08' TVD, azimuth projected at N 59.65° W, inclination projected at 43.1°, and horizontal displacement projected at 1691.40'.

2-20-91 Present depth 3244'. Made 335'. Circulate and POOH - motor started stalling out. At 3164' MD and 2337.5' TVD, azimuth = N 59.58° W, inclination = 33.2°, horizontal displacement = 1849.6'. At 3244' MD and 2405.58' TVD, azimuth = N 59.6° W, inclination = 30.3°, horizontal displacement = 1891.7'.

2-21-91 Check pipe rams. TIH, work on pump. Circulate and condition mud. Drill. Made 166'. At 3353' MD and 2502.6' TVD, azimuth = N 59.72° W, inclination = 23.6°, horizontal displacement = 1941.1'. At 3410' MD and 2555.5' TVD, azimuth = N 59.8° W, inclination = 20.0°, horizontal displacement = 1962.1'.

2-22-91 Made 190'. At 3537' MD and 2676.63' TVD, azimuth = N 59.94° W, inclination = 14.2°, horizontal displacement = 1999.73'. At 3600' MD, TVD projected at 2737.96', azimuth projected at N 60.01° W, inclination projected at 12.2°, and horizontal displacement projected at 2013.92'.

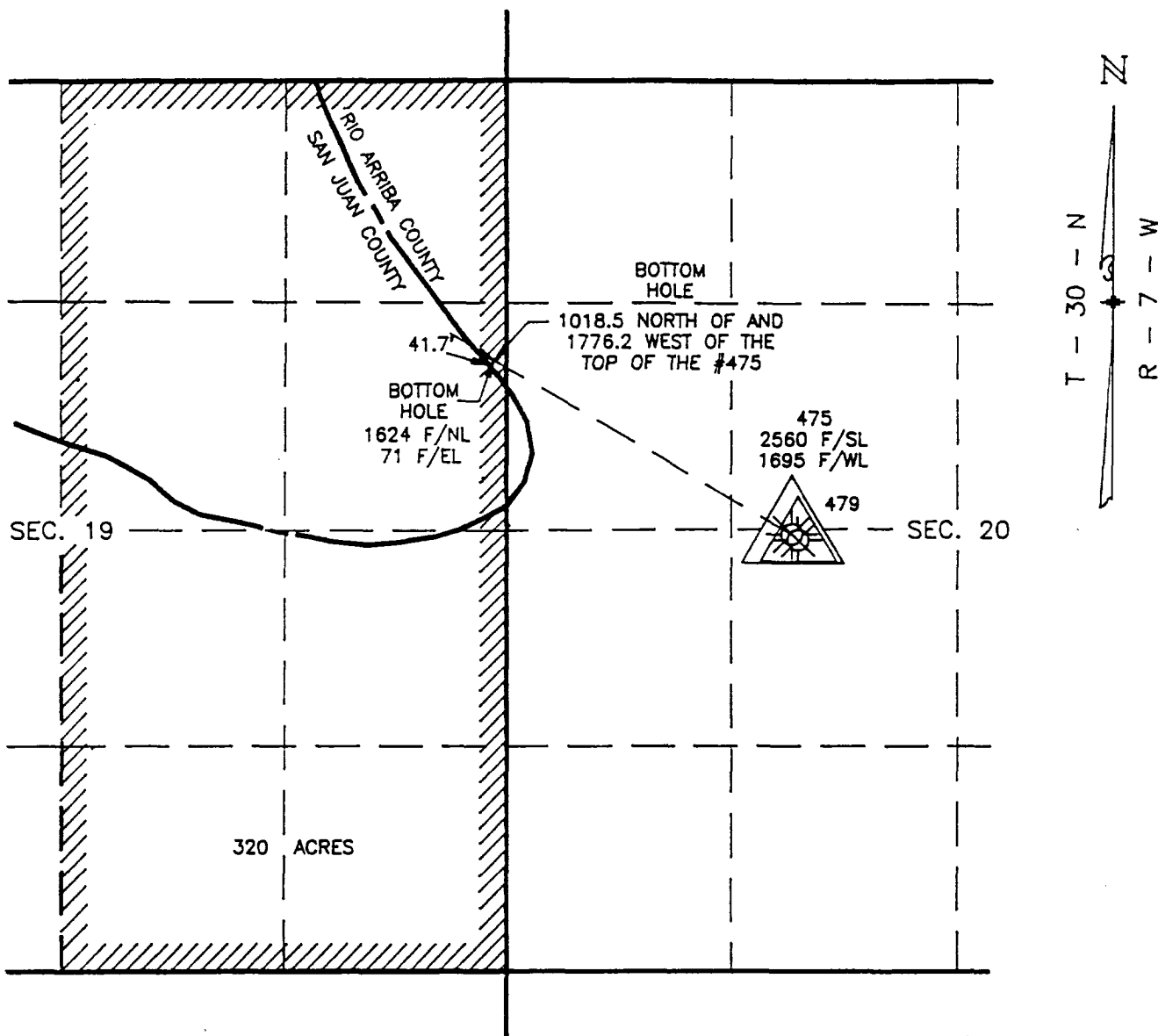
-23-91 Drill to 3650'. Circulate. Trip for bit and change motor. Cut 75' drilling line. Ream 70' to bottom. Drill. Made 90'. At 3599' MD and 2737.04' TVD, azimuth = N 60.0° W, inclination = 11.8°, horizontal displacement = 2013.50'. At 3690' MD and 2826.76' TVD, azimuth = N 60.07° W, inclination = 7.25°, horizontal displacement = 2028.35'.

-24-91 Made 177'. At 3785' MD and 2920.98' TVD, azimuth = N 60.13° W, inclination = 5.6°, horizontal displacement = 2040.11'. At 3867' MD and 3002.72' TVD, azimuth = N 60.16° W, inclination = 3.48°, horizontal displacement = 2046.5'.

-25-91 Made 17'. Drill to 3884' MD (TD) and circulate. Lay down drill pipe and directional tools. Load out same. Pick up reaming assembly and ream to 2900' MD. Stopped drilling at 3020' rather than programmed 3095' due to structure coming in 75' higher than projected. At 3833' MD and 2968.79' TVD, azimuth = N 60.15° W, inclination = 4.5°, horizontal displacement = 2044.26'. At 3884' MD and 3019.68' TVD, azimuth = N 60.17° W, inclination = 4.5°, horizontal displacement = 2047.54'.

-26-91 Ream and wash to TD. Circulate and condition hole. Lay down drill pipe and drill collars. Change rams. Rig up and run 7-5/8" casing.

-27-91 Finish running 95 jts (3887.43') 7-5/8" 29.7# N-80 8rd LT&C Dalmine casing; float shoe at 3884', insert float at 3842.8'. Circulate last 50' to TD, pump bottom wiper plug with 20 Bbl mud flush. Cement with 890 sx (1353 cf) 65/35 Howco Lite with 6% gel, 1/4 #/sk flocele, 2% KCl, and 1/2% Halad 22; mixed @ 13.2 ppg. Tail with 125 sx (147 cf) Class B with 1/4 #/sk flocele, .4% Halad 344, and .4% CFR3; mixed @ 15.6 ppg. Bump plug at 8:36 .m., 2-26-91. Float held OK. Circulate 57 Bbls cement to surface. Nipple down BOP, set 60,000# on slips, cut off casing. Install tubing head, pressure test secondary seal to 1500 psi for 25 minutes - held OK. Rig up for completion.



NOTES

1. SECTION FROM NOV. 13, 1917 G.L.O. PLAT.
2. SAN JUAN - RIO ARRIBA COUNTY LINE
DIGITIZED FROM UNITED STATES DEPARTMENT
OF THE INTERIOR GEOLOGICAL SURVEY
PINE RIVER QUADRANGLE.
3. BOTTOM HOLE LOCATION PLOTS 41.7 FOOT
INSIDE RIO ARRIBA COUNTY LINE.

RECEIVED

MAR 29 1991

OIL CON. DIV.
DIST. 3

ENG. RECORD	DATE
DRAFTING DESIGN	RAF 3/03/91
COMPUTER GRAPHICS	RAF 3/03/91
CHECKED	
PROJECT APPROVAL	
DESIGN APPROVAL	
COMPUTER SAVE NAME	NEBU475B

BLACKWOOD & NICHOLS CO., LTD.
DURANGO, COLORADO

PLAT SHOWING NORTHEAST BLANCO UNIT
NO. 475 WELL BOTTOM HOLE DISTANCE FROM
THE SAN JUAN - RIO ARRIBA COUNTY LINE
IN SEC. 19, T - 30 - N, R - 7 - W, NMPM

SCALE: 1" = 1000'
V.D.

DWG.
NO.

REV.