

OIL CONSERVATION DIVISION

P.O. Box 2088
Santa Fe, NM 87504-2088

Instructions on back
Submit to Appropriate District Office
State Lease - 4 Copies
Fee Lease - 3 Copies

☐ AMENDED REPORT

WELL LOCATION AND ACREAGE DEDICATION PLAT

Well Number 7-26058	Pool Code 72400	Pool Name E Blanco P
Property Name JICARILLA 459-18		Well Number 13
Operator Name MALLON OIL COMPANY		Elevation 7127'

10 Surface Location

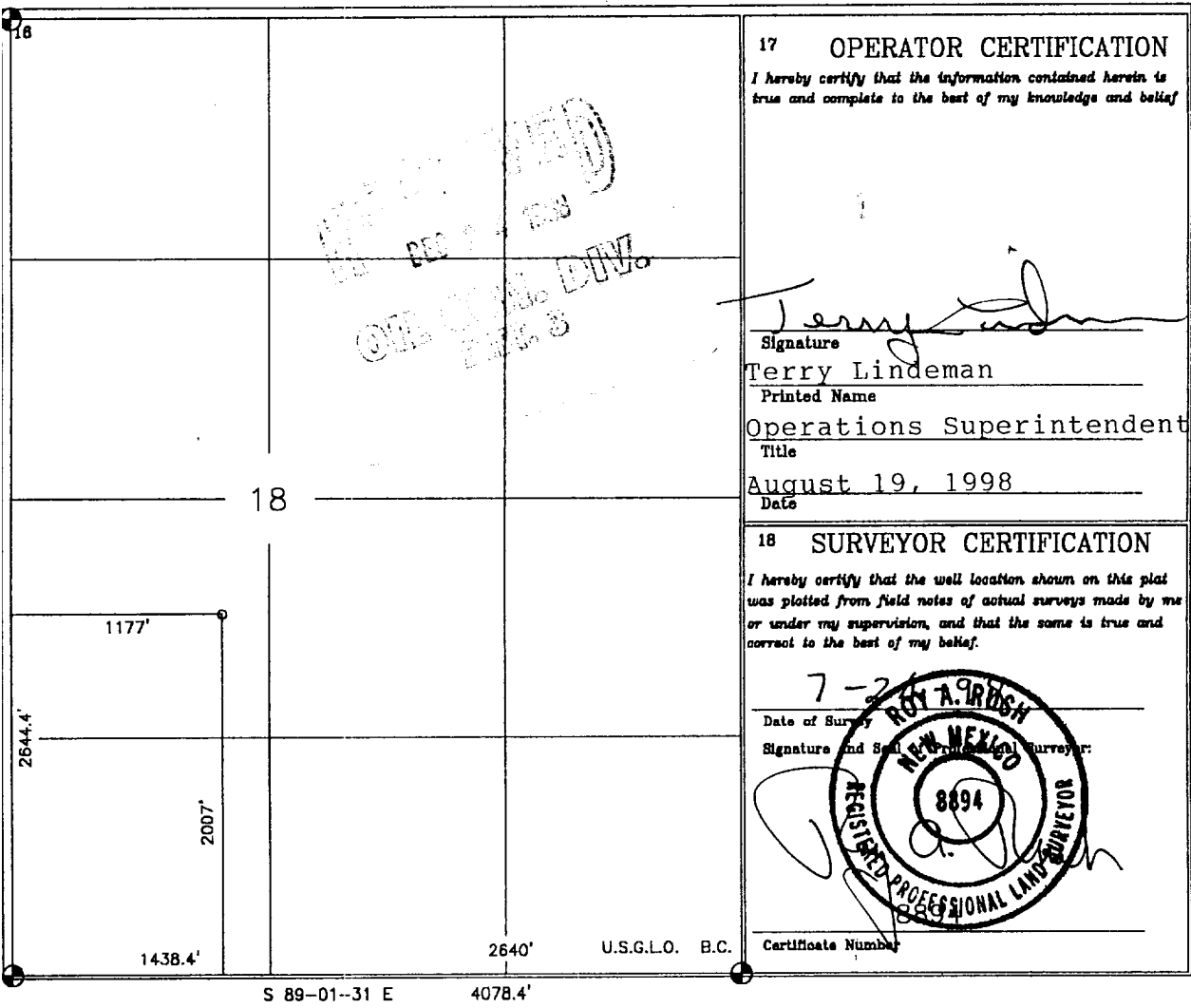
Section	Township	Range	Lot Idn	Feet from the	North/South line	Feet from the	East/West line	County
8	30-N	3-W		2007	SOUTH	1177	WEST	RIO ARRIBA

11 Bottom Hole Location If Different From Surface

Section	Township	Range	Lot Idn	Feet from the	North/South line	Feet from the	East/West line	County

Point or Infill	Consolidation Code	Order No.

WELL WILL BE ASSIGNED TO THIS COMPLETION UNTIL ALL INTERESTS HAVE BEEN CONSOLIDATED OR A NON-STANDARD UNIT HAS BEEN APPROVED BY THE DIVISION



DRILLING PROGRAM

Attached to Form 3160-3

Mallon Oil Company

Jicarilla 459-18 No. 13

2007' FSL and 1177' FWL (NE/SE) Unit I

Sec. 18, T30N-R3W

Rio Arriba County, New Mexico

LEASE NUMBER: JIC459

1. Geologic name of surface formation: San Jose

2. Estimated tops of important geologic markers:

San Jose	Surface
Nacimiento	2600'
Ojo Alamo	3230'
Kirtland	3458'
Fruitland	3478'
Pictured Cliffs	3468'
Lower P.C.	4017'
Total Depth	4500'

3. Estimated depths of anticipated fresh water, oil, or gas:

San Jose	1500'	Gas
Nacimiento	2600'	Gas
Ojo Alamo	3230'	Gas
Fruitland	3478'	Gas
Pictured Cliffs	3768'	Gas

No other formations are expected to give up oil, gas, or fresh water in measurable quantities.

The surface fresh water sands will be protected by setting 8-5/8" casing at 500' and circulating cement back to surface.

4. Proposed casing program:

<u>Hole Size</u>	<u>Interval</u>	<u>Casing OD</u>	<u>Casing weight, grade, thread</u>
12-1/4"	0-500'	8-5/8"	24 lb/ft, K55, ST&C
7-7/8"	0-4500'	5-1/2"	15.5 lb/ft, K55, LT&C

Cement program:

8-5/8" surface casing: Cemented to surface with 350 sks Class B containing 2% CaCl₂, 0.25 lb/sk Cello Seal, slurry to be mixed at 15.6 lb/gal, yield 1.18 cu ft/sk. Circulate cement to surface.

5-1/2" production casing: Lead slurry 300 sks 65/35 mixed at 13.4 lb/gal, 1.62 cu ft/sk, 30% excess. Tail with 270 sks 50/50 POZ, containing 1/4 lb/sk Cello Seal mixed at 14.15 lb/gal, 1.26 cu ft/sk, 30% excess.

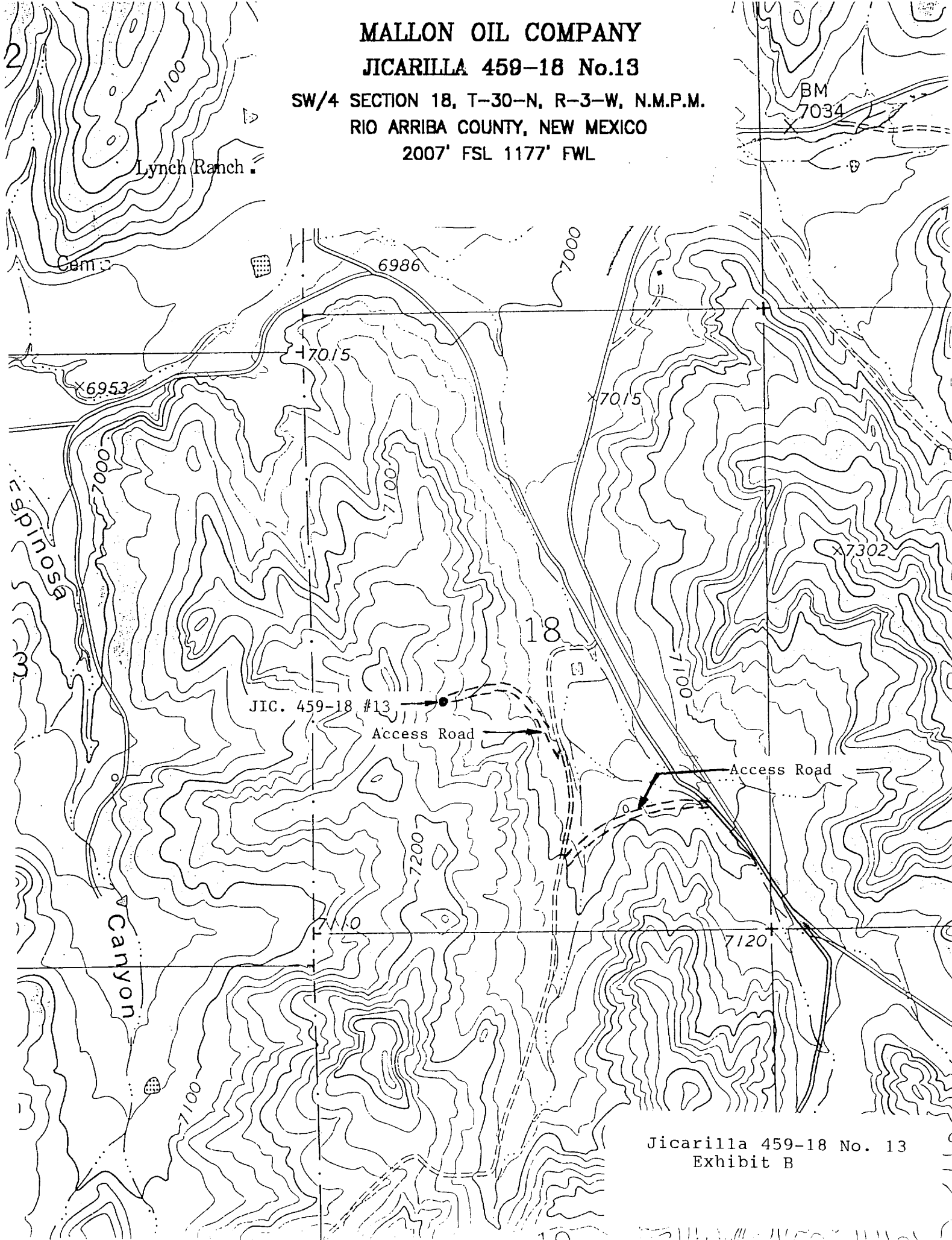
MALLON OIL COMPANY

JICARILLA 459-18 No.13

SW/4 SECTION 18, T-30-N, R-3-W, N.M.P.M.

RIO ARriba COUNTY, NEW MEXICO

2007' FSL 1177' FWL



Jicarilla 459-18 No. 13
Exhibit B