

UNITED STATES  
DEPARTMENT OF THE INTERIOR  
BUREAU OF LAND MANAGEMENT

APPLICATION FOR PERMIT TO DRILL OR DEEPEN

1a. TYPE OF WORK

DRILL ☒

DEEPEN ☐

b. TYPE OF WELL

OIL ☐

GAS ☒

OTHER

SINGLE ☐

MULTIPLE ☒

2. NAME OF OPERATOR

TAURUS EXPLORATION USA INC  
ENERGEN RESOURCES CORPORATION

3. ADDRESS AND TELEPHONE NO.

2198 Bloomfield Highway; Farmington, NM 87401

4. LOCATION OF WELL (Report location clearly and in accordance with any State requirements.)\*

At surface

830' FNL, 820' FWL

At proposed prod. zone

14. DISTANCE IN MILES AND DIRECTION FROM NEAREST TOWN OR POST OFFICE\*

Seven (7) miles NE of Gobernador, New Mexico

15. DISTANCE FROM PROPOSED\*

LOCATION TO NEAREST

PROPERTY OR LEASE LINE, FT.

(Also to nearest drlg. unit line, if any) 820'

16. NO. OF ACRES IN LEASE

506.24

17. NO. OF ACRES ASSIGNED

TO THIS WELL

205.88

18. DISTANCE FROM PROPOSED LOCATION\*

TO NEAREST WELL, DRILLING, COMPLETED,

OR APPLIED FOR, ON THIS LEASE, FT. 2500'

19. PROPOSED DEPTH

8780

20. ROTARY OR CABLE TOOLS

Rotary

21. ELEVATIONS (Surface)

7388' GL  
~~This well is subject to technical and procedural review pursuant to 43 CFR 3165.3 and appeal pursuant to 43 CFR 3165.4.~~

22. APPROX. DATE WORK WILL START\*

23. PROPOSED CASING AND CEMENTING PROGRAM

SIZE OF HOLE	GRADE SIZE OF CASING	WEIGHT PER FOOT	SETTING DEPTH	QUANTITY OF CEMENT
15	10 3/4	32.75#	200'	236 cu. ft., circ.
9 7/8	7 5/8	26.4#	4600'	1482 cu. ft., circ. - 2nd stage
6 3/4	5 1/2	17#	8780'	535 cu. ft., to intermediate

An application to dual complete is being submitted to NMOC.

Selectively perforate and sand water fracture the Mesaverde and Dakota Formations.

This gas is dedicated.

A Williams Field Service Pipeline ROW Plat is attached.

THIS IS AN EXPIDITED APD.

IN ABOVE SPACE DESCRIBE PROPOSED PROGRAM: If proposal is to deepen, give data on present productive zone and proposed new productive zone. If proposal is to drill or deepen directionally, give pertinent data on subsurface locations and measured and true vertical depths. Give blowout preventer program, if any.

24.

SIGNED

TITLE Production Superintendent

DATE

3/15/99

(This space for Federal or State office use)

PERMIT NO.

APPROVAL DATE

Application approval does not warrant or certify that the applicant holds legal or equitable title to those rights in the subject lease which would entitle the applicant to conduct operations thereon.

CONDITIONS OF APPROVAL, IF ANY:

APPROVED BY

TITLE

Adm Team Lead

DATE

5/18/99

\*See Instructions On Reverse Side

Title 18 U.S.C. Section 1001, makes it a crime for any person knowingly and willfully to make to any department or agency of the United States any false, fictitious or fraudulent statements or representations as to any matter within its jurisdiction.

District I  
171 Box 1780, Hobbs, NM 88241-1780  
District II  
811 South First, Artesia, NM 88210  
District III  
1000 Rio Huerfano Rd., Aztec, NM 87410  
District IV  
2040 South Pacheco, Santa Fe, NM 87505

State of New Mexico  
Energy, Minerals & Natural Resources Department

Revised October 18, 1997

Instructions on back

OIL CONSERVATION DIVISION  
2040 South Pacheco  
Santa Fe, NM 87505

Submit to Appropriate District Office

State Lease - 4 Copies

Fee Lease - 3 Copies

RECEIVED  
OIL CON. DIV.  
MAY 17 1999

☐ AMENDED REPORT

WELL LOCATION AND ACREAGE DEDICATION PLAT

<sup>1</sup> AIT Number 30-039-26144	<sup>2</sup> Pool Code 72329/71599	<sup>3</sup> Pool Name Blanco Mesaverte Basin, Dakota
<sup>4</sup> Property Code 21994	<sup>5</sup> Property Name SAN JUAN 30-4 UNIT	<sup>6</sup> Well Number 33A
<sup>7</sup> OGRID No. 162928	<sup>8</sup> Operator Name TAURUS EXPLORATION	<sup>9</sup> Elevation 7388'

<sup>10</sup> Surface Location

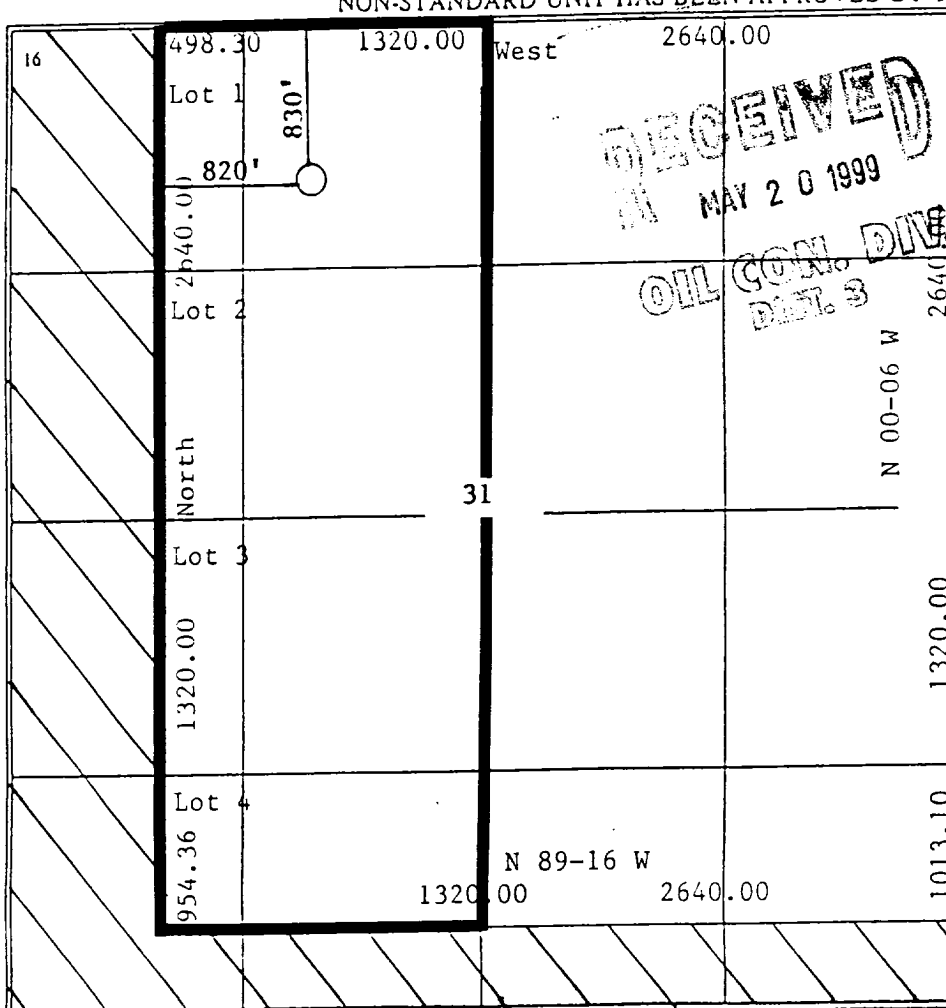
UL or lot no.	Section	Township	Range	Lot Idn	Feet from the	North/South line	Feet from the	East/West line	County
C	31	30N	4W		830'	North	820'	West	Rio Arriba

<sup>11</sup> Bottom Hole Location If Different From Surface

UL or lot no.	Section	Township	Range	Lot Idn	Feet from the	North/South line	Feet from the	East/West line	County

<sup>12</sup> Dedicated Acres 205.88	<sup>13</sup> Joint or Infill	<sup>14</sup> Consolidation Code	<sup>15</sup> Order No.
---	-------------------------------	----------------------------------	-------------------------

NO ALLOWABLE WILL BE ASSIGNED TO THIS COMPLETION UNTIL ALL INTERESTS HAVE BEEN CONSOLIDATED OR A NON-STANDARD UNIT HAS BEEN APPROVED BY THE DIVISION



<sup>17</sup> OPERATOR CERTIFICATION

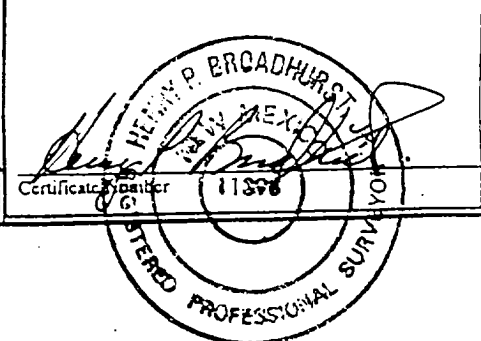
I hereby certify that the information contained herein is true and complete to the best of my knowledge and belief.

Signature 
Printed Name Gary W. Brink
Title Production Superintendent
Date 3/15/99

<sup>18</sup> SURVEYOR CERTIFICATION

I hereby certify that the well location shown on this plat was plotted from field notes of actual surveys made by me or under my supervision, and that the same is true and correct to the best of my belief.

Date of Survey 08/13/98
Signature and Seal of Professional Surveyor:



TAURUS EXPLORATION INC.

SAN JUAN 30-4 UNIT #33A

SEC. 31, T. 30 N., R. 4 W., N.M.P.M.,  
RIO ARriba COUNTY, NEW MEXICO.

