

UNITED STATES
DEPARTMENT OF THE INTERIOR
BUREAU OF LAND MANAGEMENT

APPLICATION FOR PERMIT TO DRILL, DEEPEN, OR PLUG BACK

1a. Type of Work DRILL	5. Lease Number NM-4453 Unit Reporting Number
1b. Type of Well GAS	6. If Indian, All. or Tribe
2. Operator BURLINGTON RESOURCES Oil & Gas Company	7. Unit Agreement Name
3. Address & Phone No. of Operator PO Box 4289, Farmington, NM 87401 (505) 326-9700	8. Farm or Lease Name Carson SRC 9. Well Number 3
4. Location of Well 2400' FNL, 355' FWL Latitude 36° 50.5, Longitude 107° 19.0	10. Field, Pool, Wildcat Basin Dakota 11. Sec., Twn, Rge, Mer. (NMPM) E Sec. 1, T-30-N, R-5-W API # 30-039-26380
14. Distance in Miles from Nearest Town 10 miles from Gobernador	12. County Rio Arriba 13. State NM
15. Distance from Proposed Location to Nearest Property or Lease Line 355'	
16. Acres in Lease	17. Acres Assigned to Well 267.14 N/2
18. Distance from Proposed Location to Nearest Well, Drlg, Compl, or Applied for on this Lease 1800'	
19. Proposed Depth 8200' ✓ <small>Base of hole is 8200' ±. The hole was drilled to a depth of 8200' ± and was plugged with 4 1/2" CPD 8100.4.</small>	20. Rotary or Cable Tools Rotary
21. Elevations (DF, FT, GR, Etc.) 6570' GR	22. Approx. Date Work will Start
23. Proposed Casing and Cementing Program See Operations Plan attached	
24. Authorized by: <u><i>Peggy Cole</i></u> Regulatory/Compliance Administrator	<u>2-19-00</u> Date

PERMIT NO. _____

APPROVAL DATE _____

APPROVED BY /s/ Jim Lovato

TITLE _____

DATE MAY 16 2000

Archaeological Report to be submitted

Threatened and Endangered Species Report to be submitted

NOTE: This format is issued in lieu of U.S. BLM Form 3160-3

Title 18 U.S.C. Section 1001, makes it a crime for any person knowingly and willfully to make to any department or agency of the United States any false, fictitious or fraudulent statements or presentations as to any matter within its jurisdiction.

HOLD C104 FOR NSL

10000

District I
PO Box 1980, Hobbs, NM 88241-1980

District II
PO Drawer DD, Artesia, NM 88211-0719

District III
1000 Rio Brazos Rd., Aztec, NM 87410

District IV
PO Box 2088, Santa Fe, NM 87504-2088

State of New Mexico
Energy, Minerals & Natural Resources Department

OIL CONSERVATION DIVISION
PO Box 2088
Santa Fe, NM 87504-2088

Form C-1C
Revised February 21, 1999
Instructions on back
Submit to Appropriate District Office
State Lease - 4 Copies
Fee Lease - 3 Copies

☐ AMENDED REPORT

WELL LOCATION AND ACREAGE DEDICATION PLAT

*API Number 30-039-26380		*Pool Code 71599	*Pool Name Basin Dakota
*Property Code 18492	*Property Name CARSON SRC		*Well Number 3
*GRID No. 14538	*Operator Name BURLINGTON RESOURCES OIL & GAS COMPANY		*Elevation 6570'

10 Surface Location

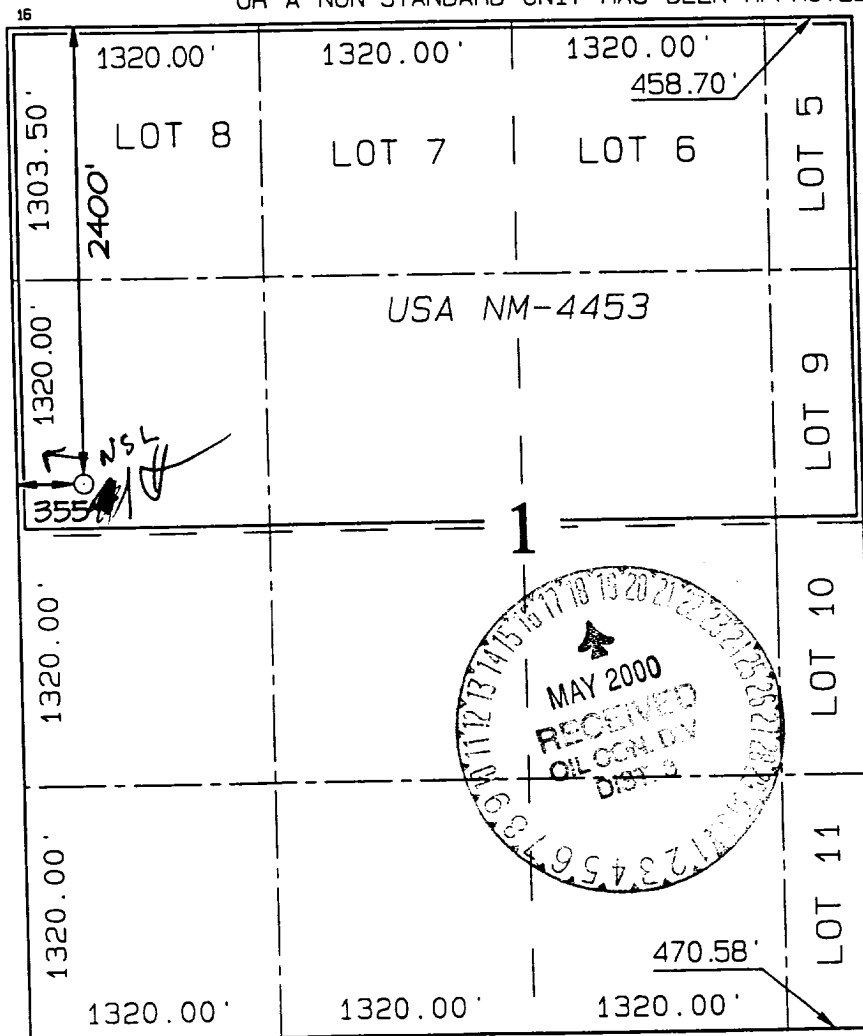
UL or lot no.	Section	Township	Range	Lot Idn	Feet from the	North/South line	Feet from the	East/West line	County
E	1	30N	5W		2400	NORTH	355	WEST	RIO ARriba

11 Bottom Hole Location If Different From Surface

UL or lot no.	Section	Township	Range	Lot Idn	Feet from the	North/South line	Feet from the	East/West line	County

12 Dedicated Acres N/267.14	13 Joint or Infill	14 Consolidation Code	15 Order No.
--------------------------------	--------------------	-----------------------	--------------

NO ALLOWABLE WILL BE ASSIGNED TO THIS COMPLETION UNTIL ALL INTERESTS HAVE BEEN CONSOLIDATED
OR A NON-STANDARD UNIT HAS BEEN APPROVED BY THE DIVISION



17 OPERATOR CERTIFICATION

I hereby certify that the information contained herein is true and complete to the best of my knowledge and belief.

Peggy Cole
Signature

Peggy Cole
Printed Name

Regulatory Administrator
Title

2-19-00
Date

18 SURVEYOR CERTIFICATION

I hereby certify that the well location shown on this plat was plotted from field notes of actual surveys made by me or under my supervision, and that the same is true and correct to the best of my belief.

DECEMBER 10, 1999

Date of Survey

Signature and Seal of Surveyor

NEALE C. EDWARDS
NEW MEXICO
6857
Certificate Number 6857

OPERATIONS PLAN

Well Name: Carson SRC #3
Location: 2400' FSL, 355' FWL, Sec 1, T-30-N, R-5-W
Rio Arriba County, NM
Latitude 36° 50.5, Longitude 107° 19.0
Formation: Basin Dakota
Elevation: 6570' GL

<u>Formation Tops:</u>	<u>Top</u>	<u>Bottom</u>	<u>Contents</u>
Surface	San Jose	2692'	
Ojo Alamo	2692'	2888'	aquifer
Kirtland	2888'	3255'	gas
Fruitland	3255'	3387'	gas
Pictured Cliffs	3387'	3868'	gas
Lewis	3868'	4366'	gas
Intermediate TD	3968'		
Mesa Verde	4366'	4475'	gas
Chacra	4475'	5527'	gas
Massive Cliff House	5527'	5616'	gas
Menefee	5616'	5821'	gas
Massive Point Lookout	5821'	6325'	gas
Mancos	6325'	7125'	gas
Gallup	7125'	7842'	gas
Greenhorn	7842'	7897'	gas
Graneros	7897'	8029'	gas
Dakota	8029'		gas
TD	8200' ✓		

Logging Program:

Cased hole - CBL-CCL-GR - TD to surface
Open hole - Platform Express - TD to intermediate casing
Cores - none

Mud Program:

<u>Interval</u>	<u>Type</u>	<u>Weight</u>	<u>Vis.</u>	<u>Fluid Loss</u>
0- 200'	Spud	8.4-9.0	40-50	no control
200- 3968'	LSND	8.4-9.0	30-60	no control
3968- 8200'	Gas ✓	n/a	n/a	n/a

Pit levels will be visually monitored to detect gain or loss of fluid control.

Casing Program (as listed, the equivalent, or better):

<u>Hole Size</u>	<u>Depth Interval</u>	<u>Csg. Size</u>	<u>Wt.</u>	<u>Grade</u>
12 1/4"	0' - 200' ✓	9 5/8"	32.3#	WC-50
8 3/4"	0' - 3968' ✓	7"	20.0#	J-55
6 1/4"	3868' - 8200' ✓	4 1/2"	10.5#	K-55

Tubing Program:

0' - 8200' 2 3/8" 4.7# J-55

BOP Specifications, Wellhead and Tests:

Surface to Intermediate TD -

11" 2000 psi minimum double gate BOP stack (Reference Figure #1).
After nipple-up prior to drilling out surface casing, rams and casing will be tested to 600 psi for 30 minutes.

Intermediate TD to Total Depth -

11" 2000 psi minimum double gate BOP stack (Reference Figure #1).
After nipple-up prior to drilling out intermediate casing, rams and casing will be tested to 1500 psi for 30 minutes.

BURLINGTON RESOURCES OIL & GAS COMPANY CARSON SRC #3

2400' FNL & 355' FWL, SECTION I, T30N, R5W, N.M.P.M.
RIO ARriba COUNTY, NEW MEXICO

APD MAP #1

500' NEW FOREST SERVICE CONSTRUCTION
100' NW/SW SECTION I, T30N, R5W
400' SWNW SECTION I, T30N, R5W.

