

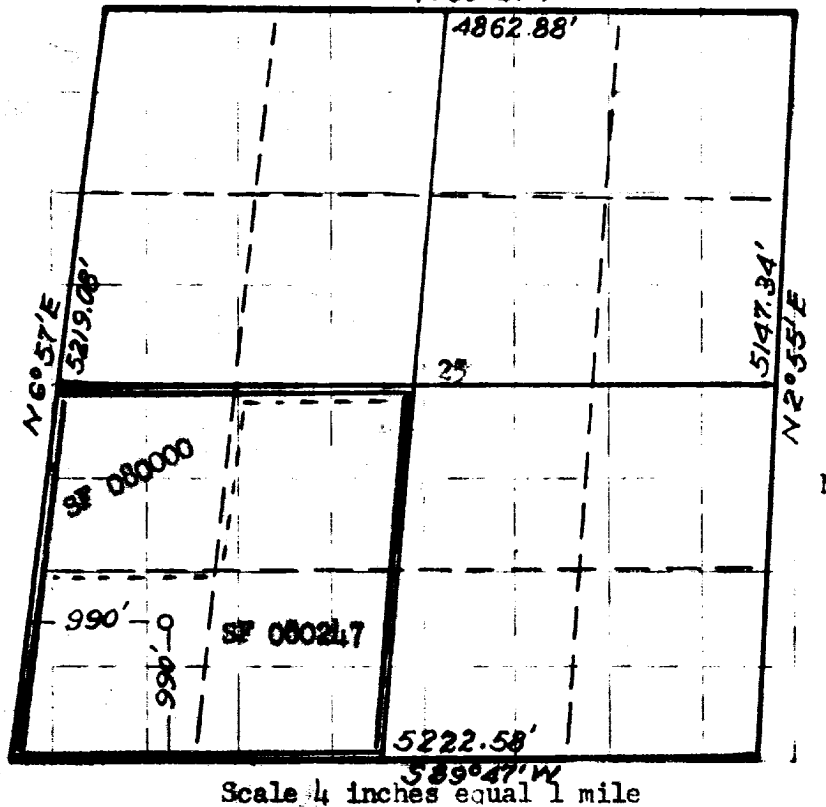
## OIL CONSERVATION COMMISSION

## WELL LOCATION AND/OR GAS PRODUCTION PLAT

DATE April 11, 1956OPERATOR DELHI-TAYLOR OIL CORPORATION LEASE S.F. 080247  
FloranceWELL NO. #26-G SECTION 25 TOWNSHIP 29 NORTH RANGE 9 WEST NMFMLOCATED 990 FEET FROM the SOUTH LINE 990 FEET FROM the WEST LINESAN JUAN COUNTY, NEW MEXICO G. L. ELEVATION 5910NAME OF PRODUCING FORMATION Pictured Cliffs Unders. DEDICATED ACREAGE 152.24

Note: All distances must be from outer boundaries of section.

N89°47'W



## NOTE

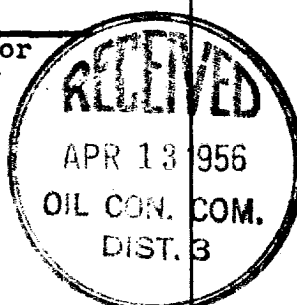
This section of  
form is to be used  
for gas wells only

This is to certify that the above plat was prepared from field notes of actual surveys made by me or under my supervision and that the same are true and correct to the best of my knowledge and belief.

Date Surveyed October 13, 1955

James P. Leese  
Registered Professional Engineer and/or  
Land Surveyor James P. Leese  
N. M. Reg. No. 1443

- Is this well a Dual Comp.  
Yes X No
- If the answer to Question 1 is yes, are there any other dually completed wells within the dedicated acreage.  
Yes        No X

Name John H. HumePosition Dist. Supt.Representing Delhi-Taylor Oil CoAddress Box 1175 Farmington, N.W<sub>2</sub> Sec. Dedicated 299.24 Ac.SW<sub>1</sub> Sec. Dedicated 152.24 Ac.

## No. 00123456789

No. Containing:

1. *Chlorophyll a* and *Chlorophyll b* were determined by the method of Arar and Collins (1971).

1. *Chlorophyll a* and *Chlorophyll b* were determined by the method of Arar and Collins (1971) using a Shimadzu 1010 spectrophotometer. The concentration of chlorophyll was expressed in  $\mu\text{g mL}^{-1}$  of the sample.

1. The first group of people who are not in the labor force are those who are not in the labor force for any reason. This group is the largest and is made up of people who are not in the labor force for any reason.

1. *Phragmites* spp. (Poaceae)

... ..

## Transfer

1112