

NEW MEXICO OIL CONSERVATION COMMISSION

Santa Fe, New Mexico

NOTICE OF INTENTION TO DRILL OR RECOMPLETE

Notice must be given to the District Office of the Oil Conservation Commission and approval obtained before drilling or recompletion begins. If changes in the proposed plan are considered advisable, a copy of this notice showing such changes will be returned to the sender. Submit this notice in **QUINTUPLICATE**. One copy will be returned following approval. See additional instructions in Rules and Regulations of the Commission.

Astec, New Mexico
(Place)

June 1, 1953
(Date)

OIL CONSERVATION COMMISSION
SANTA FE, NEW MEXICO

Gentlemen:

You are hereby notified that it is our intention to commence the (Drilling) ~~recompletion~~ of a well to be known as

Basin Natural Gas Corporation
(Company or Operator)

Sullivan
(Lease)

, Well No. **1**, in **G** (Unit)

located **1781.7** feet from the **North** line and **1570.4** feet from the

East

line of Section **26**, T. **29 N**, R. **11 W**, NMPM.

(GIVE LOCATION FROM SECTION LINE) **Fulcher-Kutz Ext.** Pool, **San Juan** County

If State Land the Oil and Gas Lease is No. **X**

If patented land the owner is **Sullivan**

Address **Bloomfield, New Mexico**

We propose to drill well with drilling equipment as follows: **Cable Tools &**

Rotary

The status of plugging bond is **Blanket Bond**

Drilling Contractor **F. B. Umbarger**

We intend to complete this well in the **Picture Cliff** formation at an approximate depth of **1700** feet.

CASING PROGRAM

We propose to use the following strings of Casing and to cement them as indicated:

Size of Hole	Size of Casing	Weight per Foot	New or Second Hand	Depth	Sacks Cement
12 1/2"	8 5/8"	32#	Second	70'	12
8 3/4"	5 1/2"	15#	New	App. 1700	100

If changes in the above plans become advisable we will notify you immediately.

ADDITIONAL INFORMATION (If recompletion give full details of proposed plan of work.)

If production is indicated we will shoot the section with approximately **1 1/2** qts. to the foot of SEG and complete as gas well, running **1"** tubing to the bottom. We will run a Geoelectric log and may test the Farmington-Fruitland if indicated by the electric log.

Approved **7-29**, 19**53**

Except as follows:

*Subject to Final Approval or
Bond by Commissioner*

OIL CONSERVATION COMMISSION

By **Ernest C. Arnold**

Oil and Gas Inspector Dist. #3

Title

Basin Natural Gas Corporation
(Company or Operator)

By **F. B. Umbarger**

Position **Vice President**

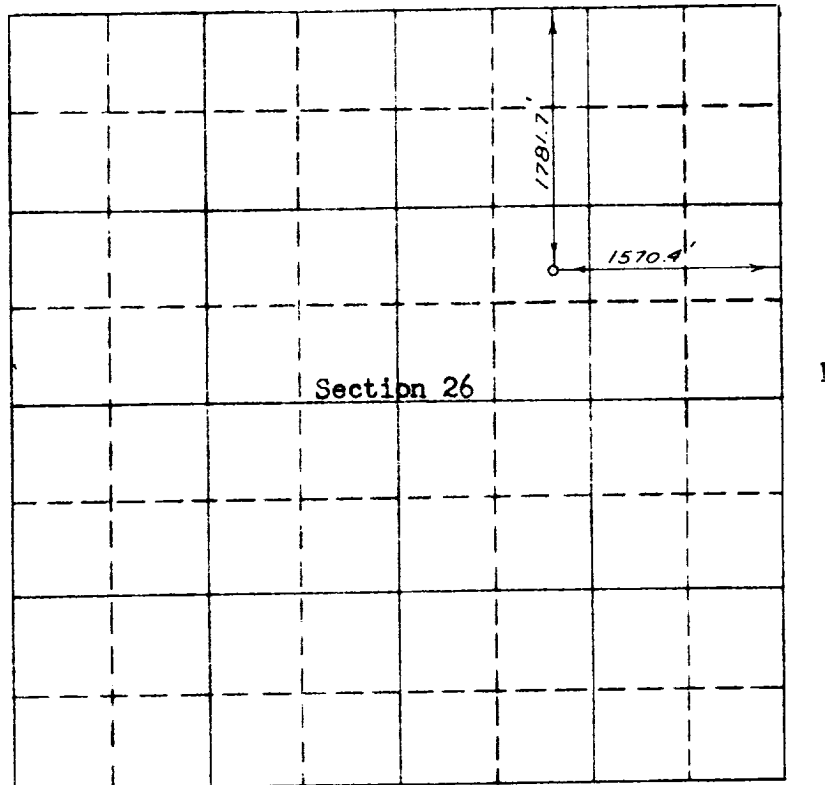
Send Communications regarding well to

Name **F. B. Umbarger**

Address **Box 878**

Astec, New Mexico

COMPANY BASIN NATURAL GAS CORPORATION
Well Name & No. Basin Natural Gas Corp Lease No. Sullivan #1
Location 1570.4 feet from the East line. 1781.7 feet from the North line.
Being in The SW $\frac{1}{4}$ of the NE $\frac{1}{4}$
Sec. 26, T29 N., R11 W., N.M.P.M., San Juan County, New Mexico
Ground Elevation 5469.62



Scale -- 4 inches equals 1 mile

Surveyed May 6, 19 53

This is to certify that the above plat was prepared from field notes of actual surveys made by me or under my supervision and that the same are true and correct to the best of my knowledge and belief.

E. O. Walker
Registered Professional
Engineer and Land Surveyor.

W:

ngton, New Mexico

DIL CONSERVATION COMMISSION
AZTEC DISTRICT OFFICE

No. Copies Received 4

DISTRIBUTION

	NO. FURNISHED	
Operator	1	
Santa Fe	1	
Proration Office		
State Land Office		
U. S. G. S.	2	
Transporter		
File	1	