

UNITED STATES
DEPARTMENT OF THE INTERIOR
GEOLOGICAL SURVEY

APPLICATION FOR PERMIT TO DRILL, DEEPEN, OR PLUG BACK

1a. TYPE OF WORK
DRILL ☒ DEEPEN ☐ PLUG BACK ☐

b. TYPE OF WELL
OIL WELL ☐ GAS WELL ☒ OTHER ☐ SINGLE ZONE ☒ MULTIPLE ZONE ☐

2. NAME OF OPERATOR

Aztec Oil and Gas

3. ADDRESS OF OPERATOR

Drawer 580, Farmington, New Mexico

4. LOCATION OF WELL (Report location clearly and in accordance with any State requirements.*)

At surface

1510 FNL & 1650 FWL, Sec. 6-29N-11W

At proposed prod. zone

14. DISTANCE IN MILES AND DIRECTION FROM NEAREST TOWN OR POST OFFICE*

15. DISTANCE FROM PROPOSED*
LOCATION TO NEAREST
PROPERTY OR LEASE LINE, FT.
(Also to nearest drlg. unit line, if any)

16. NO. OF ACRES IN LEASE

17. NO. OF ACRES ASSIGNED
TO THIS WELL

18. DISTANCE FROM PROPOSED LOCATION*
TO NEAREST WELL, DRILLING, COMPLETED,
OR APPLIED FOR, ON THIS LEASE, FT.

19. PROPOSED DEPTH

20. ROTARY OR CABLE TOOLS

21. ELEVATIONS (Show whether DF, RT, GR, etc.)

5806 Gr

22. APPROX. DATE WORK WILL START*

23. PROPOSED CASING AND CEMENTING PROGRAM

SIZE OF HOLE	SIZE OF CASING	WEIGHT PER FOOT	SETTING DEPTH	QUANTITY OF CEMENT
<i>12-1/4"</i>	<i>8-5/8"</i>	<i>24#</i>	<i>115'</i>	<i>60 sz</i>
<i>6-3/4"</i>	<i>4-1/2"</i>	<i>9.5#</i>	<i>2075'</i>	<i>225 sz</i>

Propose to:

Drill 12 1/4" hole to TD 115' run 8-5/8" surface pipe cement w/60 sz
Drill 6-3/4" hole to TD 2075' run 4 1/2" casing cement w/225 sz
Run Induction Electric log
Perforate and Frac Pictured Cliffs formation
Run 1" tubing

Proration unit: NW/4 Sec. 6-29N-11W - 160 ac.

IN ABOVE SPACE DESCRIBE PROPOSED PROGRAM: If proposal is to deepen or plug back, give data on present productive zone and proposed new productive zone. If proposal is to drill or deepen directionally, give pertinent data on subsurface locations and measured and true vertical depths. Give blowout preventer program, if any.

24.

SIGNED

Jac. C. Palmer

TITLE

District Superintendent

DATE

6-18-69

(This space for Federal or State office use)

PERMIT NO.

APPROVAL DATE

APPROVED BY

CONDITIONS OF APPROVAL, IF ANY:

TITLE

DATE

*See Instructions On Reverse Side

5. LEASE DESIGNATION AND SERIAL NO.
SF-078813

6. IF INDIAN, ALLOTTEE OR TRIBE NAME

7. UNIT AGREEMENT NAME

8. FARM OR LEASE NAME
Cooper

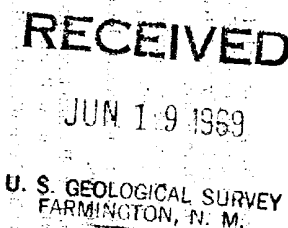
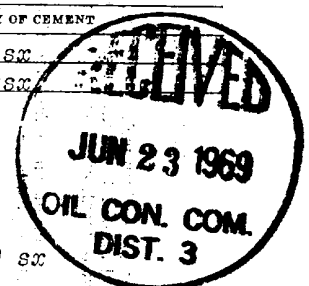
9. WELL NO.
6

10. FIELD AND POOL, OR WILDCAT
Pictured Cliffs

11. SEC., T., R., M., OR BLK. AND SURVEY OR AREA
Sec. 6-29N-11W

12. COUNTY OR PARISH
San Juan

13. STATE
New Mexico



NEW MEXICO OIL CONSERVATION COMMISSION
WELL LOCATION AND ACREAGE DEDICATION PLAT

Form 1-1-2
Supersedes G-128
Effective 1-1-55

All distances must be from the outer boundaries of the Section.

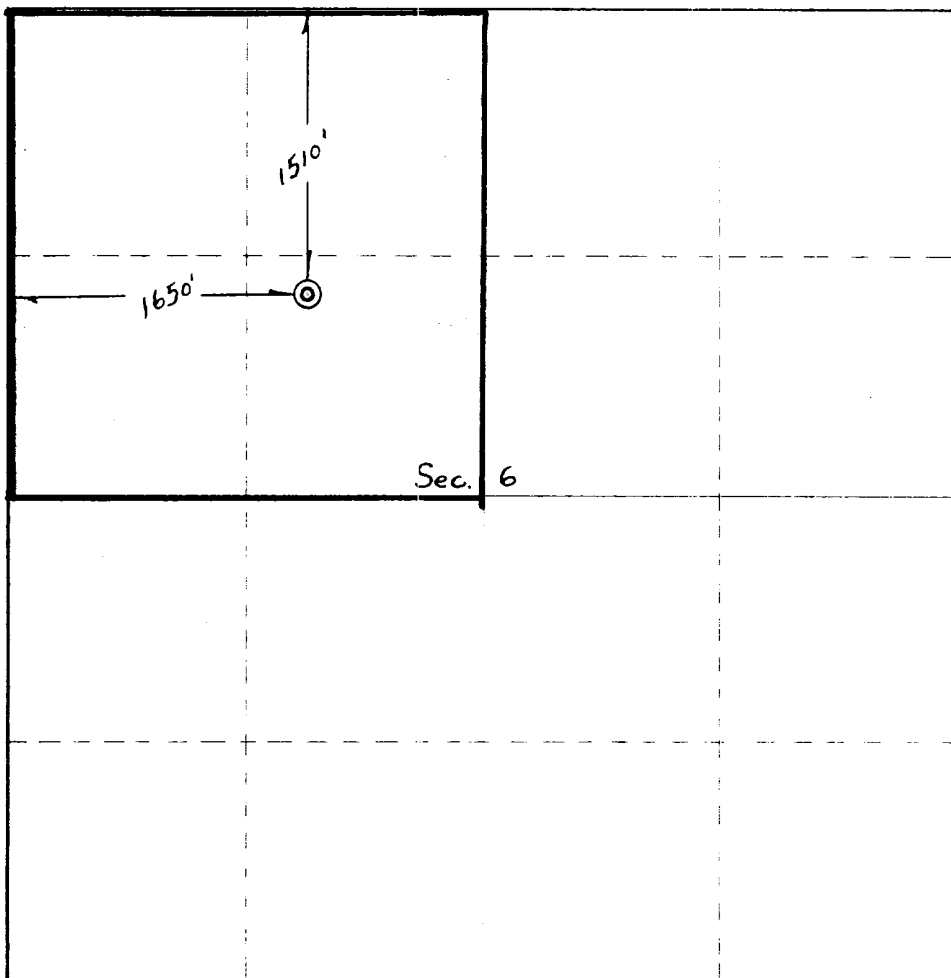
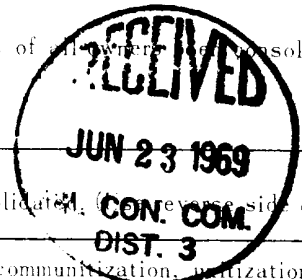
Operator Aztec Oil & Gas Company		Land		Well No.	
Unit Letter F	Section 6	Range 29N	Meridian 11W	County San Juan	
Actual Surface Location of Well:					
1510 feet from the North		1650 feet from the West			
Ground Level Elev. 5806	Formation Pictured Cliffs	Blanco Pictured Cliffs		Total Acreage 137.80 Acres	

1. Outline the acreage dedicated to the subject well by colored pencil or hachure marks on the plat below.
2. If more than one lease is dedicated to the well, outline each and identify the ownership thereof (both as to working interest and royalty).
3. If more than one lease of different ownership is dedicated to the well, have the interests of all owners consolidated by communitization, unitization, force-pooling, etc?

☐ Yes ☐ No If answer is "yes," type of consolidation _____

If answer is "no," list the owners and tract descriptions which have actually been consolidated, (on reverse side of this form if necessary.) _____

No allowable will be assigned to the well until all interests have been consolidated (by communitization, unitization, forced-pooling, or otherwise) or until a non-standard unit, eliminating such interests, has been approved by the Commission.



CERTIFICATION

I hereby certify that the information contained herein is true and complete to the best of my knowledge and belief.

Name of Operator
Location of Well
County
Date

I hereby certify that the well location shown on this plat was plotted from field notes of actual surveys made by me or under my supervision, and that the same is true and correct to the best of my knowledge and belief.

June 12, 1969

Consolidated by _____
Unitized by _____
Force-pooled by _____

3950

