

30-045-21678

UNITED STATES
DEPARTMENT OF THE INTERIOR
GEOLOGICAL SURVEY

APPLICATION FOR PERMIT TO DRILL, DEEPEN, OR PLUG BACK

1a. TYPE OF WORK

DRILL ☒DEEPEN ☐PLUG BACK ☐

b. TYPE OF WELL

OIL
WELL ☐GAS
WELL ☒

OTHER

SINGLE
ZONE ☐MULTIPLE
ZONE ☒

2. NAME OF OPERATOR

El Paso Natural Gas Company

3. ADDRESS OF OPERATOR

PO Box 990, Farmington, NM 87401

4. LOCATION OF WELL (Report location clearly and in accordance with any State requirements.)*
At surface

1650'S, 1460'W

At proposed prod. zone

14. DISTANCE IN MILES AND DIRECTION FROM NEAREST TOWN OR POST OFFICE*

15. DISTANCE FROM PROPOSED*

LOCATION TO NEAREST
PROPERTY OR LEASE LINE, FT.
(Also to nearest drlg. unit line, if any)

16. NO. OF ACRES IN LEASE

17. NO. OF ACRES ASSIGNED
TO THIS WELL160.00 $\$160$ 18. DISTANCE FROM PROPOSED LOCATION*
TO NEAREST WELL, DRILLING, COMPLETED,
OR APPLIED FOR, ON THIS LEASE, FT.

19. PROPOSED DEPTH

3035'

20. ROTARY OR CABLE TOOLS

Rotary

21. ELEVATIONS (Show whether DF, RT, GR, etc.)

5668'GL

22. APPROX. DATE WORK WILL START*

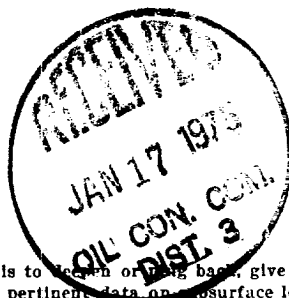
23.

PROPOSED CASING AND CEMENTING PROGRAM

| SIZE OF HOLE | SIZE OF CASING | WEIGHT PER FOOT | SETTING DEPTH | QUANTITY OF CEMENT |
|--------------|----------------|-----------------|---------------|--------------------------------|
| 13 3/4" | 9 5/8" | 32.3# | 120' | 120 cu. ft. to circulate |
| 8 3/4" | 2 7/8" | 6.4# | 2050' | 720 cu. ft. to cover Ojo Alamo |
| 6 3/4" | 2 7/8" | 6.4# | 3035' | 290 cu. ft. to cover Lewis |

Selectively perforate and sandwater fracture the Chacra and Pictured Cliffs formation.

The SW/4 of Section 9 is dedicated to this well.



JAN 16 1975

U. S. GEOLOGICAL SURVEY

IN ABOVE SPACE DESCRIBE PROPOSED PROGRAM: If proposal is to deepen or plug back, give data on present productive zone and proposed new productive zone. If proposal is to drill or deepen directionally, give pertinent data on subsurface locations and measured and true vertical depths. Give blowout preventer program, if any.

24.

SIGNED

D. G. Buses

TITLE

Drilling Clerk

DATE January 16, 1975

(This space for Federal or State office use)

PERMIT NO.

APPROVAL DATE

APPROVED BY

TITLE

DATE

CONDITIONS OF APPROVAL, IF ANY:

OK

*See Instructions On Reverse Side

WELL LOCATION AND ACREAGE DEDICATION PLAT

Form C-102
Supersedes C-128
Effective 1-1-65

All distances must be from the outer boundaries of the Section.

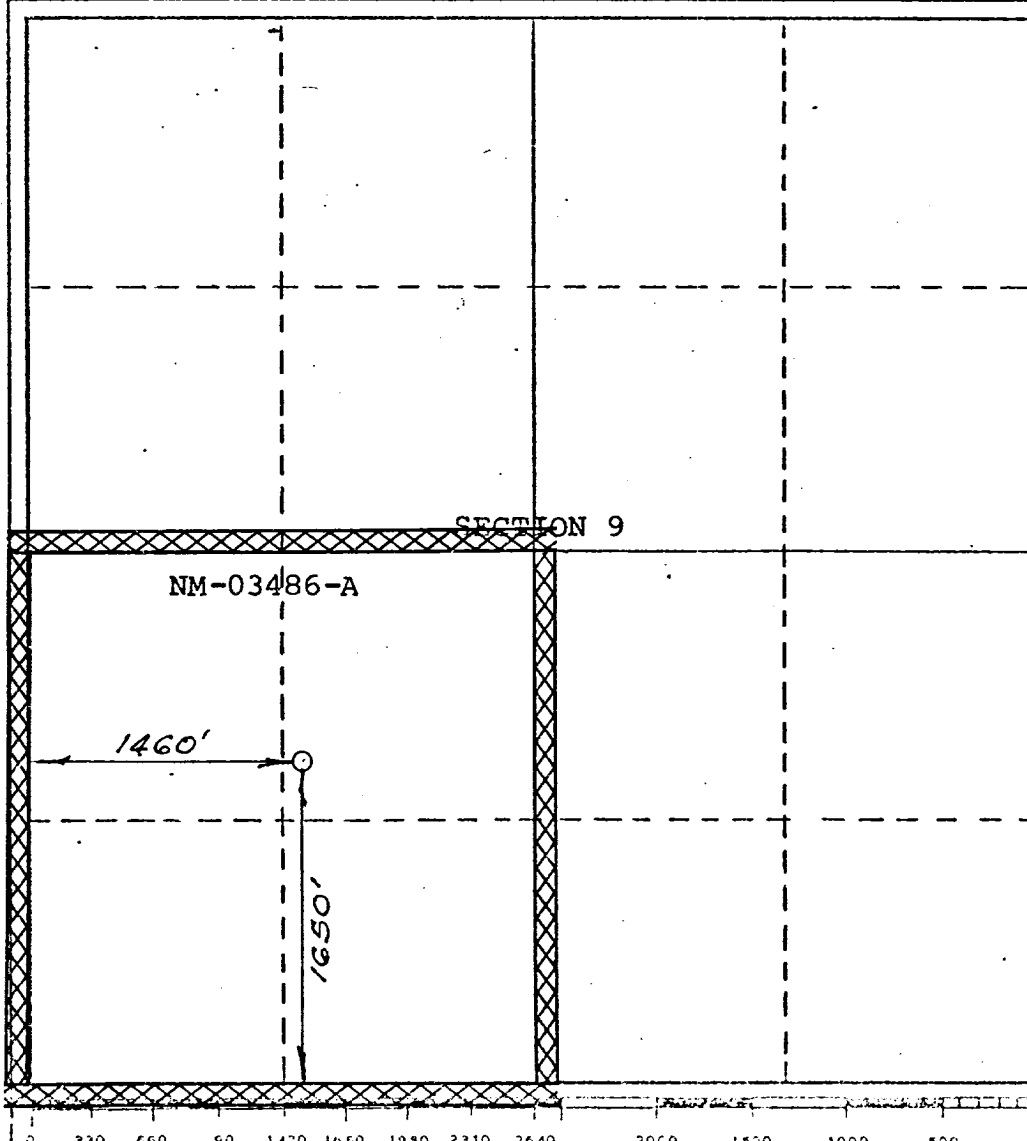
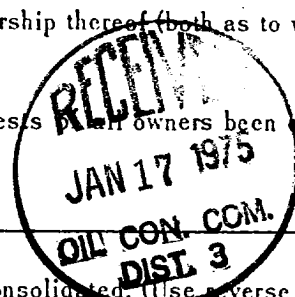
| | | | | |
|--------------------------------------------------------------------------------------------------------------------------------|------------------------------------------------------|--------------------------------------|------------------------------------------------------|---------------------------|
| Operator EL PASO NATURAL GAS COMPANY | | Lease LLOYD A (NM-03486-A) | | Well No. 4 |
| Unit Letter K | Section 9 | Township 29-N | Range 11-W | County SAN JUAN |
| Actual Footage Location of Well: 1650 feet from the SOUTH line and 1460 feet from the WEST line | | | | |
| Ground Level Elev. 5668 | Producing Formation PICTURED CLIFFS-CHACRA | Pool UNDESIGNATED CHACRA | Dedicated Acreage: 160.0 & 160.0 Acres | |

1. Outline the acreage dedicated to the subject well by colored pencil or hachure marks on the plat below.
2. If more than one lease is dedicated to the well, outline each and identify the ownership thereof (both as to working interest and royalty).
3. If more than one lease of different ownership is dedicated to the well, have the interests of all owners been consolidated by communitization, unitization, force-pooling, etc?

☐ Yes ☐ No If answer is "yes," type of consolidation _____

If answer is "no," list the owners and tract descriptions which have actually been consolidated. (Use reverse side of this form if necessary.) _____

No allowable will be assigned to the well until all interests have been consolidated (by communitization, unitization, forced-pooling, or otherwise) or until a non-standard unit, eliminating such interests, has been approved by the Commission.



CERTIFICATION

I hereby certify that the information contained herein is true and complete to the best of my knowledge and belief.

Original Signed by
D. G. Brisco

Name

D. G. Brisco

Position

El Paso Natural Gas Co.

Company

January 12, 1975

Date

I hereby certify that the well location shown on this plat was plotted from field notes of actual surveys made by me or under my supervision, and that the same is true and correct to the best of my knowledge and belief.

Date Surveyed

OCTOBER 29, 1974

Registered Professional Engineer and/or Land Surveyor

[Signature]

Certificate No.

1760