

UNITED STATES  
DEPARTMENT OF THE INTERIOR  
GEOLOGICAL SURVEY

## APPLICATION FOR PERMIT TO DRILL, DEEPEN, OR PLUG BACK

## 1a. TYPE OF WORK

DRILL ☒DEEPEN ☐PLUG BACK ☐

## b. TYPE OF WELL

OIL  
WELL ☒GAS  
WELL ☐

OTHER

SINGLE  
ZONE ☐MULTIPLE  
ZONE ☐

## 2. NAME OF OPERATOR

Walter Duncan

## 3. ADDRESS OF OPERATOR

Box 234, Farmington, New Mexico 87401

## 4. LOCATION OF WELL (Report location clearly and in accordance with any State requirements.\*)

At surface

2450' FSL - 1520' FEL

At proposed prod. zone

## 14. DISTANCE IN MILES AND DIRECTION FROM NEAREST TOWN OR POST OFFICE\*

8 miles east southeast of Shiprock, New Mexico

## 15. DISTANCE FROM PROPOSED\*

LOCATION TO NEAREST  
PROPERTY OR LEASE LINE, FT.  
(Also to nearest drlg. unit line, if any)

1530'

## 18. DISTANCE FROM PROPOSED LOCATION\*

TO NEAREST WELL, DRILLING, COMPLETED,  
OR APPLIED FOR, ON THIS LEASE, FT.

450' approx

## 16. NO. OF ACRES IN LEASE

320

## 19. PROPOSED DEPTH

700'

17. NO. OF ACRES ASSIGNED  
TO THIS WELL

2-1/2 40

20. ROTARY OR CABLE TOOLS  
Cable tool surface casing  
Rotary btm surface csg to TD

## 21. ELEVATIONS (Show whether DF, RT, GR, etc.)

4986' GR

## 22. APPROX. DATE WORK WILL START\*

2-10-75

## 23.

## PROPOSED CASING AND CEMENTING PROGRAM

| SIZE OF HOLE | SIZE OF CASING | WEIGHT PER FOOT | SETTING DEPTH | QUANTITY OF CEMENT |
|--------------|----------------|-----------------|---------------|--------------------|
| 9"           | 7"             | 20#             | 30'           | 5 sx               |
| 6-1/4"       | 4-1/2"         | 10.5#           | 680'          | 75 sx              |

1. Drive 7" casing thru boulders and cement with 5 sx cement.
2. Drill 6-1/4" hole to top of Dakota sand at approximately 680'.
3. Run 4-1/2" casing and cement to surface with 75 sx cement.
4. Drill 3-7/8" hole below 4-1/2" casing to approximately 700'.
5. Complete well in open hole without stimulation of Dakota sand.
6. Run 2-3/8" tubing to 695'.

IN ABOVE SPACE DESCRIBE PROPOSED PROGRAM: If proposal is to deepen or plug back, give data on present productive zone and proposed new productive zone. If proposal is to drill or deepen directionally, give pertinent data on subsurface locations and measured and true vertical depths. Give blowout preventer program, if any.

## 24. Original signed by

SIGNED

Jim L. Jacobs

TITLE

Geologist

DATE

2-6-75

(This space for Federal or State office use)

PERMIT NO.

APPROVAL DATE

APPROVED BY

TITLE

CONDITIONS OF APPROVAL, IF ANY:

RECEIVED

FEB 7 1975

U. S. GEOLOGICAL SURVEY  
WASHINGTON, D. C.

**NEW MEXICO OIL CONSERVATION COMMISSION  
WELL LOCATION AND ACREAGE DEDICATION PLAT**

Form C-102  
Supersedes C-128  
Effective 1-1-65

All distances must be from the outer boundaries of the Section.

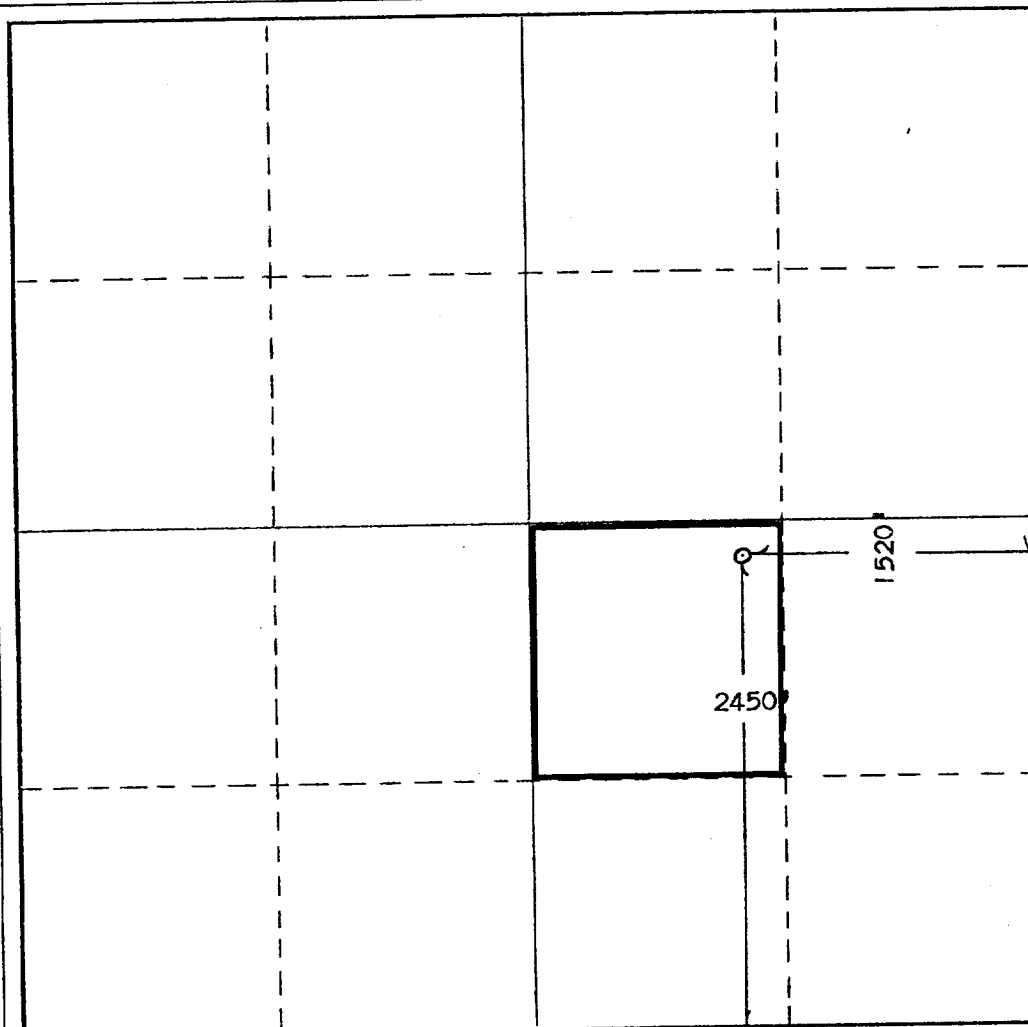
|  |                                      |                                 |                                 |  |                         |
|--|--------------------------------------|---------------------------------|---------------------------------|--|-------------------------|
| Operator<br><b>Walter Duncan</b>   |                                      |                                 | Lease<br><b>North Hogback 1</b> |  | Well No.<br><b>18-Y</b> |
| Unit Letter<br><b>J</b>  | Section<br><b>1</b>                  | Township<br><b>29N</b>          | Range<br><b>17W</b>             | County<br><b>San Juan</b>                                |                         |
| Actual Footage Location of Well:<br><b>2450</b> feet from the <b>South</b> line and <b>1520</b> feet from the <b>East</b> line |                                      |                                 |                                 |  |                         |
| Ground Level Elev:<br><b>4986'</b>   | Producing Formation<br><b>Dakota</b> | Pool<br><b>Slickrock Dakota</b> |                                 | <del>XXXXXXXXXX</del><br>Proration Unit: <b>40</b> Acres |                         |

1. Outline the acreage dedicated to the subject well by colored pencil or hachure marks on the plat below.
2. If more than one lease is dedicated to the well, outline each and identify the ownership thereof (both as to working interest and royalty).
3. If more than one lease of different ownership is dedicated to the well, have the interests of all owners been consolidated by communitization, unitization, force-pooling, etc?

☐ Yes    ☐ No    If answer is "yes," type of consolidation \_\_\_\_\_

If answer is "no," list the owners and tract descriptions which have actually been consolidated. (Use reverse side of this form if necessary.) \_\_\_\_\_

No allowable will be assigned to the well until all interests have been consolidated by communitization, unitization, forced-pooling, or otherwise) or until a non-standard unit, eliminating such interests, has been approved by the Commission.



**CERTIFICATION**

*I hereby certify that the information contained herein is true and complete to the best of my knowledge and belief.*

**Original signed by**

**Jim L. Jacobs**

Name

**Jim L. Jacobs**

Position

**Geologist**

Company

**Walter Duncan**

Date

**2-6-75**

*I hereby certify that the well location shown on this plat was plotted from field notes of actual surveys made by me or under my supervision, and that the same is true and correct to the best of my knowledge and belief.*

*2. A. Dugan*

Date Surveyed

**Thomas A. Dugan**

Registered Professional Engineer  
and/or Land Surveyor

**Registered Prof. Engineer**

Certificate No.

**2373**

0 330 660 990 1320 1650 1980 2310 2640 2000 1500 1000 500 0