

NO. OF COPIES RECEIVED	5
DISTRIBUTION	
SANTA FE	1
FILE	1
U.S.G.S.	2
LAND OFFICE	
OPERATOR	1

NEW MEXICO OIL CONSERVATION COMMISSION

AMENDED LOCATION

Form C-101
Revised 1-1-65

API 30-045-2205

(AMENDED APPLICATION)

5A. Indicate Type of Lease	
STATE <input type="checkbox"/>	FEE <input checked="" type="checkbox"/>
5. State Oil & Gas Lease No.	
Com. Agr. 14-08-001-2440	

APPLICATION FOR PERMIT TO DRILL, DEEPEN, OR PLUG BACK

1a. Type of Work		7. Unit Agreement Name	
b. Type of Well OIL WELL <input type="checkbox"/> GAS WELL <input checked="" type="checkbox"/> OTHER <input type="checkbox"/>		8. Farm or Lease Name Florance	
2. Name of Operator Tenneco Oil Company		9. Well No. 32A	
3. Address of Operator 1860 Lincoln, Suite 1200, Denver, Colorado 80203		10. Field and Pool, or Wildcat Blanco Mesa Verde	
4. Location of Well UNIT LETTER F LOCATED 1703 FEET FROM THE North LINE AND 1850 FEET FROM THE West LINE OF SEC. 15 TWP. 30N RGE. 8W NMPM		12. County San Juan	
19. Proposed Depth 4995'		19A. Formation Blanco Mesa Verde	
20. Rotary or C.T. Rotary		21. Elevations (Show whether DF, RT, etc.) 5760' GR	
21A. Kind & Status Plug. Bond Blanket		21B. Drilling Contractor Unknown	
22. Approx. Date Work will start Upon Approval			

23.

PROPOSED CASING AND CEMENT PROGRAM

SIZE OF HOLE	SIZE OF CASING	WEIGHT PER FOOT	SETTING DEPTH	SACKS OF CEMENT	EST. TOP
12 1/4"	9 5/8"	36#	200' +	Suff. to circulate to surface	
8 3/4"	7"	23#	3050' +	Suff. to cement back to surface	
6 1/8"	4 1/2"	10.5#	2800 - 4995' +	Suff. to cement back to 7" csg.	

Plan to drill well as follows:

1. MIRURT, drill 12 1/4" hole to + 200'.
2. Set and cement 9 5/8" casing to + 200' and cement with suff. cement to circ. to surface.
3. Drill out with 8 3/4" bit to + 3050'.
4. Run 7" casing and cement back to surface casing.
5. Drill out of 7" using gas as the circulating fluid, do not drill more than 10' below the 7" casing shoe until the hole has dried up completely and is dusting.
6. Drill the hole to T. D., log the hole dry as requested by drillsite geologist.
7. Run 4 1/2" liner to T.D., load hole with mud and cement liner back to top of 4 1/2". Set liner hanger and POH w/drill pipe.
8. This well will be completed through casing perforations and stimulated as necessary to establish commercial production.
9. Clean up area.

IN ABOVE SPACE DESCRIBE PROPOSED PROGRAM: IF PROPOSAL IS TO DEEPEN OR PLUG BACK, GIVE DATA ON PRESENT PRODUCTIVE ZONE AND PROPOSED NEW PRODUCTIVE ZONE. GIVE BLOWOUT PREVENTER PROGRAM, IF ANY.

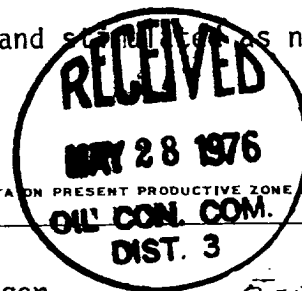
I hereby certify that the information above is true and complete to the best of my knowledge and belief.

Signed D.L. Meyer Title Div. Production Manager Date 5-26-76

(This space for State Use)

APPROVED BY AR Kendrick TITLE SUPERVISOR DIST. #3 DATE JUN 28 1976

CONDITIONS OF APPROVAL, IF ANY:



**NEW MEXICO OIL CONSERVATION COMMISSION
WELL LOCATION AND ACERAGE DEDICATION PLAT**

All distances must be from the outer boundaries of the Section

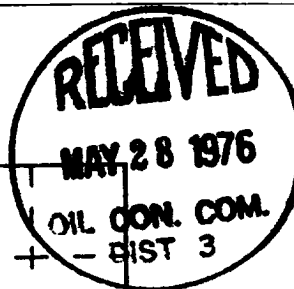
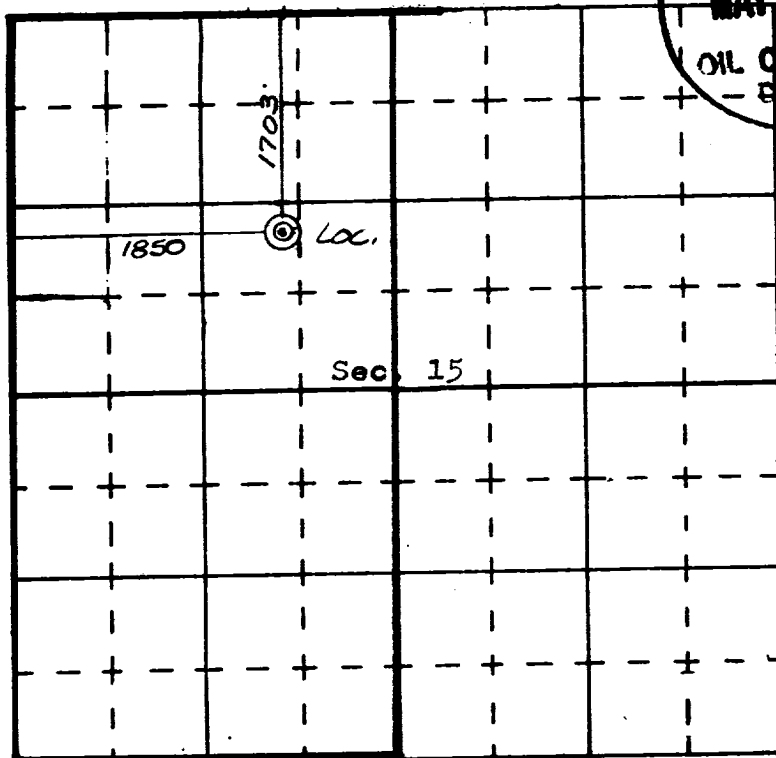
Operator TENNECO OIL COMPANY			Lease FLORANCE		Well No. 32-A
Unit Letter F	Section 15	Township 30 NORTH	Range 8 WEST	County SAN JUAN	
Actual Footage Location of Well: 1703 feet from the NORTH line and 1850 feet from the WEST line					
Ground Level Elev. 5760	Producing Formation Blanco Mesaverde	Pool Blanco Mesaverde	Dedicated Acreage: 320		W/2

1. Outline the acreage dedicated to the subject well by colored pencil or hachure marks on the plat below.
2. If more than one lease is dedicated to the well, outline each and identify the ownership thereof (both as to working interest and royalty),
3. If more than one lease of different ownership is dedicated to the well, have the interests of all owners been consolidated by communitization, unitization, force-pooling, etc?

() Yes () No If answer is "yes," type of consolidation Communitization

If answer is "no," list the owners and tract descriptions which have actually consolidated. (Use reverse side of this form if necessary.)

No allowable will be assigned to the well until all interests have been consolidated (by communitization, unitization, forced-pooling, or otherwise) or until a non standard unit, eliminating such interests, has been approved by the Commission.



CERTIFICATION

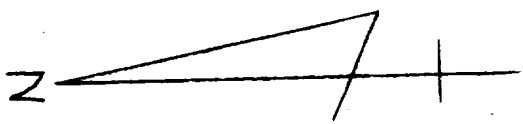
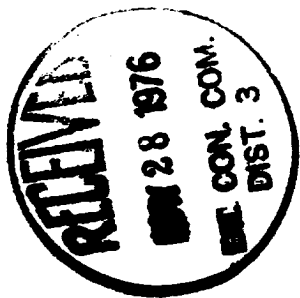
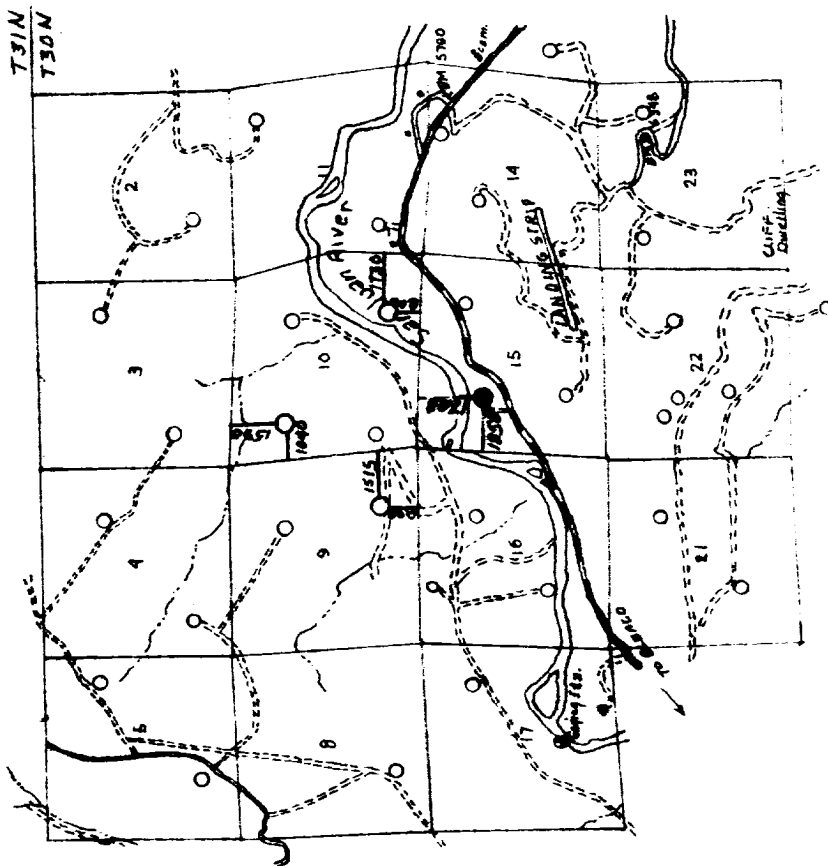
I hereby certify that the information contained herein is true and complete to the best of my knowledge and belief.

Name Conley Thattin
 Position _____
 Company Clerical Supervisor
 Date Tenneco Oil Company
5-4-76

I hereby certify that the well location shown on this plat was plotted from field notes of actual surveys made by me or under my supervision, and that the same is true and correct to the best of my knowledge and belief.

18 May, 1976
 Date Surveyed _____
James P. Leese
 Registered Professional Engineer
 and/or Land Surveyor
James P. Leese

1463
 Certificate No.



1" = 1 mile

Florence 32-A

Vicinity Map for

Tenneco Oil Company

Showing

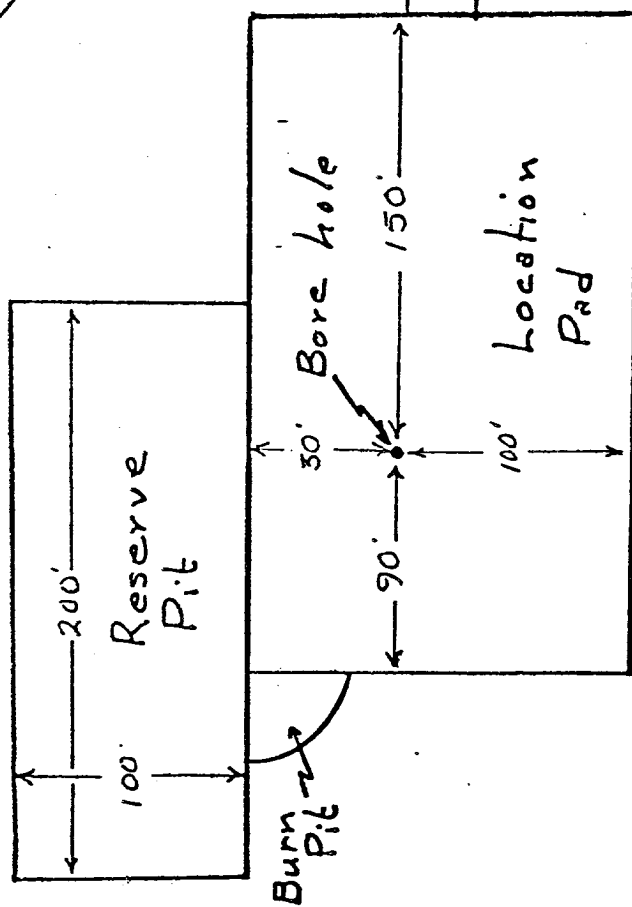
Well locations in SE1/4 of Sec 9;
NW1/4 of Sec 10; SE1/4 of Sec 10; NW1/4
of Sec 15; T30N, RBW, N.M.P.M.,
San Juan County, New Mexico

Scale: 1" = 1 Mile

Date: 15 March 1976

San Juan Engineering Company
Farmington, New Mexico

RIG LAYOUT
Florence 32-A



Florance #32A
SURFACE USE PLAN

1. Shown on attached map.
2. Shown on attached map. Approximately 200' of 14' wide road will be required.
3. Shown on attached map.
4. Shown on attached map.
5. This is expected to be a dry gas well, therefore, a tank battery will not be required.
6. Water will be hauled from the San Juan River or nearest wash.
7. All waste material will be buried in reserve pit at time of location clean up.
8. No camps will be associated with this operation.
9. No airstrip will be built for this operation.
10. Shown on attached diagram.
11. Upon completion or abandonment of this well, the location will be cleaned and levelled and a dry hole marker placed, if applicable.
12. The location is sandy, rocky, typical for the area. Vegetation is sage brush, scrub oak, and scrub cedar.



Florance #32A
7 POINT WELL CONTROL PLAN

1. Surface casing: 9 5/8", 24#, approximately 200, grade K-55, new condition.
2. Casinghead will be 10", 900 Series, 3,000 psi rating.
3. Intermediate casing - 7", 20#, K-55, will be set at \pm 3050' and cemented to surface casing.
4. Blowout preventors: Hydraulic, double ram, 10". One set of rams will be provided for each size drill pipe in the hole. One set of blind rams at all times. Fill line will be 2", kill line will be 2", choke relief line will be 2" with variable choke.
5. Auxiliary equipment:
 - (1) Kelly cock will be in use at all times.
 - (2) Stabbing valve to fit drill pipe will be present on floor at all times.
 - (3) Mud monitoring will be visual, no abnormal pressures are anticipated in this area.
 - (4) Rotating head will be used when drilling with gas.
6. Anticipated bottom-hole pressure:

This is an area of known pressure. Maximum anticipated pressure at 5700' T.D. is 1200 psi.
7. Drilling Fluids:
 - 0 - 200' Spud mud
 - 200- 3050' Gel water - low solids as needed to maintain good conditions.
 - 3050'- T.D. Compressed gas

