

30-045-22217

NEW MEXICO OIL CONSERVATION COMMISSION

Form C-101
Revised 1-1-65

NO. OF COPIES RECEIVED	6
DISTRIBUTION	
SANTA FE	1
FILE	1
U.S.G.S.	2
LAND OFFICE	
OPERATOR	2

5A. Indicate Type of Lease	
STATE <input type="checkbox"/>	FEE <input checked="" type="checkbox"/>
5. State Oil & Gas Lease No.	

APPLICATION FOR PERMIT TO DRILL, DEEPEN, OR PLUG BACK

1a. Type of Work		7. Unit Agreement Name	
b. Type of Well OIL WELL <input type="checkbox"/> GAS WELL <input checked="" type="checkbox"/> OTHER <input type="checkbox"/>		8. Farm or Lease Name Lee	
2. Name of Operator Energy Reserves Group, Inc.		9. Well No. 1	
3. Address of Operator Box 3280, Casper, Wyoming 82602		10. Field and Pool, or Wildcat Pinon Fruitland North	
4. Location of Well UNIT LETTER B LOCATED 990 FEET FROM THE north LINE AND 1650 FEET FROM THE east LINE OF SEC. 29 TWP. 29N RGE. 12W NMPM		12. County San Juan	
19. Proposed Depth 1200'		19A. Formation Fruitland	
20. Rotary or C.T. Rotary		21. Elevations (Show whether DE, RT, etc.) 5316' GRD	
21A. Kind & Status Plug. Bond Blanket #3881464		21B. Drilling Contractor none yet	
22. Approx. Date Work will start October 15, 1976			

23.

PROPOSED CASING AND CEMENT PROGRAM

SIZE OF HOLE	SIZE OF CASING	WEIGHT PER FOOT	SETTING DEPTH	SACKS OF CEMENT	EST. TOP
12 1/4"	8-5/8"	24#	100'+	75	Ground level
7-7/8"	4 1/2"	9.5#	1200'+	75	900'

Energy Reserves Group, Inc. proposes to drill the above well with rotary tools from surface to TD. The anticipated zone of completion is the Fruitland formation. No cores or DST's are planned. Copies of all logs run will be furnished upon completion of the well. Copies of the location plat are attached. The estimated tops are as follows:

Fruitland	1100'
TD	1200'

APPROVAL VALID
FOR 90 DAYS UNLESS
DRILLING COMMENCED,

EXPIRES

1-11-77

IN ABOVE SPACE DESCRIBE PROPOSED PROGRAM: IF PROPOSAL IS TO DEEPEN OR PLUG BACK, GIVE DATA ON PRESENT PRODUCTIVE ZONE AND PROPOSED NEW PRODUCTIVE ZONE. GIVE BLOWOUT PREVENTER PROGRAM, IF ANY.

I hereby certify that the information above is true and complete to the best of my knowledge and belief.

Signed Dean B. Barner Title Rocky Mountain District District Production Engr. Date October 8, 1976

(This space for State Use)

Original Signed by Dean B. BarnerAPPROVED BY _____ TITLE _____ DATE 10-12-1976

CONDITIONS OF APPROVAL, IF ANY:

**NEW MEXICO OIL CONSERVATION COMMISSION
WELL LOCATION AND ACREAGE DEDICATION PLAT**

Form C-102
Supersedes C-128
Effective 1-1-65

All distances must be from the outer boundaries of the Section.

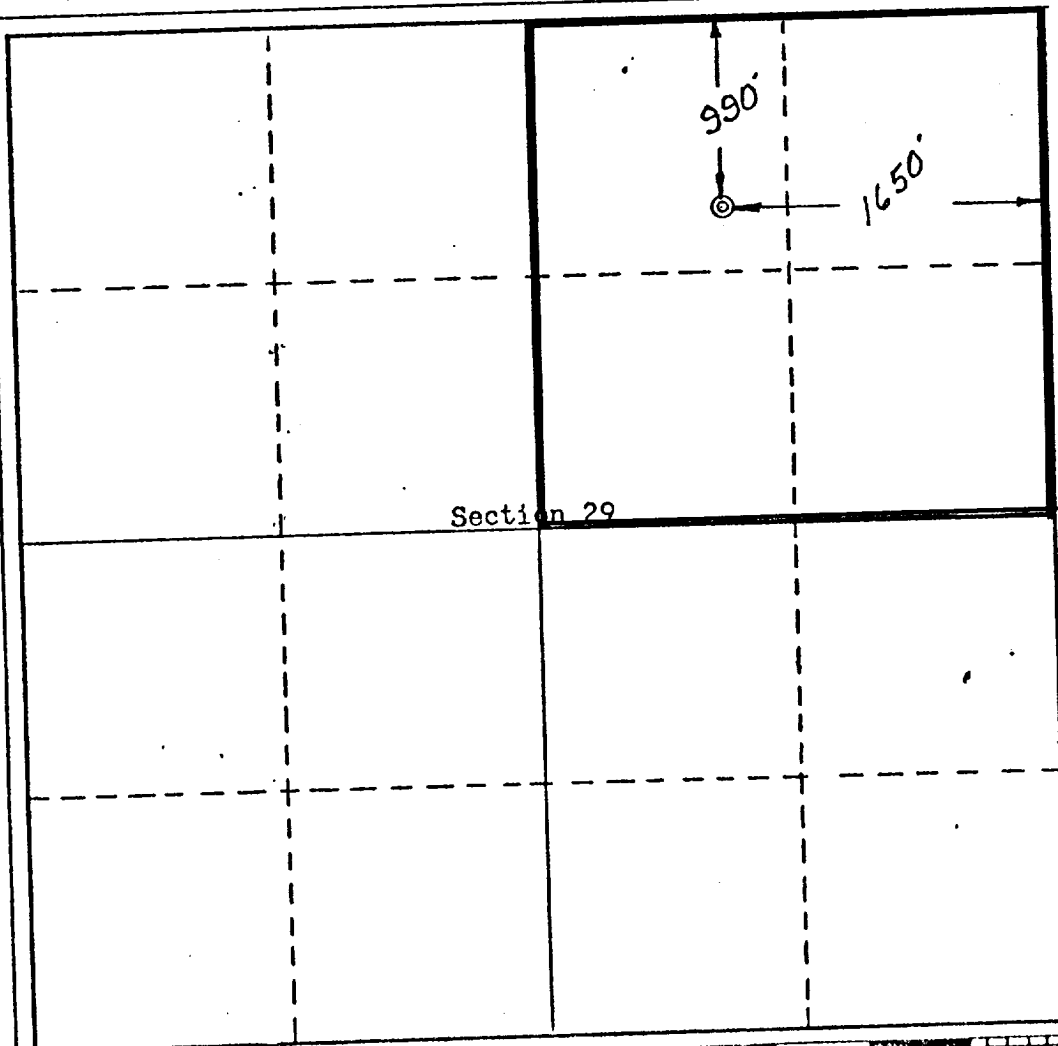
Operator Energy Reserves Group, Inc.			Lease Lee		Well No. 1
Unit Letter B	Section 29	Township 29 North	Range 12 West	County San Juan	
Actual Footage Location of Well: 990 feet from the North line and 1650 feet from the East line					
Ground Level Elev. 5316	Producing Formation Fruitland		Pool Pinon Fruitland North		Dedicated Acreage: 160 Acres

1. Outline the acreage dedicated to the subject well by colored pencil or hachure marks on the plat below.
2. If more than one lease is dedicated to the well, outline each and identify the ownership thereof (both as to working interest and royalty).
3. If more than one lease of different ownership is dedicated to the well, have the interests of all owners been consolidated by communitization, unitization, force-pooling, etc?

☐ Yes ☐ No If answer is "yes," type of consolidation _____

If answer is "no," list the owners and tract descriptions which have actually been consolidated. (Use reverse side of this form if necessary.) _____

No allowable will be assigned to the well until all interests have been consolidated (by communitization, unitization, forced-pooling, or otherwise) or until a non-standard unit, eliminating such interests, has been approved by the Commission.



CERTIFICATION

I hereby certify that the information contained herein is true and complete to the best of my knowledge and belief.

Name *Hean B. Barnes*
 Position Rocky Mtn. District
District Prod. Engr.
 Company
Energy Reserves Group, Inc.
 Date _____

I hereby certify that the well location shown on this plot was plotted from field notes of actual surveys made by me or under my supervision, and that the same is true and correct to the best of my knowledge and belief.

Date Surveyed September 30, 1976

Registered Professional Engineer and Land Surveyor

Certificate No. 5084

