

NO. OF COPIES RECEIVED	5
DISTRIBUTION	
SANTA FE	1
FILE	2
U.S.G.S.	2
LAND OFFICE	
OPERATOR	1

NEW MEXICO OIL CONSERVATION COMMISSION

30-045-23728
Form C-101
Revised 1-1-65

EXPIRES 11-19-79

5A. Indicate Type of Lease	
STATE <input type="checkbox"/>	FEE <input checked="" type="checkbox"/>
5. State Oil & Gas Lease No.	
7. Unit Agreement Name	
8. Farm or Lease Name	
Maddox Gas Com "C"	
9. Well No.	
1X	
10. Field and Pool, or Wildcat	
Basin Dakota	
12. County	
San Juan	
19. Proposed Depth	19A. Formation
6569'	Dakota
20. Rotary or C.T.	
Rotary	
21. Elevations (Show whether DE, RT, etc.)	21A. Kind & Status Plug. Bond
5529' GL	Statewide
21B. Drilling Contractor	22. Approx. Date Work will start
Unknown	9/9/79

APPLICATION FOR PERMIT TO DRILL, DEEPEN, OR PLUG BACK

1a. Type of Work	
b. Type of Well	
DRILL <input checked="" type="checkbox"/>	DEEPEN <input type="checkbox"/>
OIL WELL <input type="checkbox"/>	GAS WELL <input checked="" type="checkbox"/>
OTHER	Infill
2. Name of Operator	
AMCO PRODUCTION COMPANY	
3. Address of Operator	
501 Airport Drive, Farmington, New Mexico 87401	
4. Location of Well	
UNIT LETTER	LOCATED
P	940
FEET FROM THE	
South	
AND	FEET FROM THE
860	East
LINE OF SEC.	
27	
TWP.	RGE.
29N	10W
NMPM	
19. Proposed Depth	
6569'	
19A. Formation	
Dakota	
20. Rotary or C.T.	
Rotary	
21. Elevations (Show whether DE, RT, etc.)	
5529' GL	
21A. Kind & Status Plug. Bond	
Statewide	
21B. Drilling Contractor	
Unknown	
22. Approx. Date Work will start	
9/9/79	

23.

PROPOSED CASING AND CEMENT PROGRAM

SIZE OF HOLE	SIZE OF CASING	WEIGHT PER FOOT	SETTING DEPTH	SACKS OF CEMENT	EST. TOP
12-1/4"	9-5/8"	32.3 #	300'	240 sx.	Surface
8-3/4"	7"	23 #	2249'	335 sx.	Surface
6-1/4"	4-1/2"	11.6 #	6569'	240 sx.	2099

Amoco proposes to drill the above well to further develop the Basin Dakota reservoir. The well will be drilled to the surface casing point using native mud. The well will then be drilled to the intermediate casing point with a low solids nondispersed mud system and to TD with air. Completion design will be based on open hole logs. Copy of all logs will be filed upon completion. Amoco's standard blowout prevention will be employed; see attached drawing for blowout preventer design.

Upon completion the well location will be cleaned and the reserve pit filled and leveled.

Gas produced from this well is dedicated to El Paso Natural Gas Co.

IN ABOVE SPACE DESCRIBE PROPOSED PROGRAM; IF PROPOSAL IS TO DEEPEN OR PLUG BACK, GIVE DATA ON PRESENT PRODUCTIVE ZONE AND PROPOSED NEW PRODUCTIVE ZONE. GIVE BLOWOUT PREVENTER PROGRAM, IF ANY.

I hereby certify that the information above is true and complete to the best of my knowledge and belief.

Original Signed By

Signed B. E. Packard Title District Engineer Date August 17, 1979

(This space for State Use)

APPROVED BY Frank S. Lang TITLE DEPUTY OIL CONSERVATION COMMISSIONER DATE August 17, 1979

CONDITIONS OF APPROVAL, IF ANY:

OIL CONSERVATION DIVISION

STATE OF NEW MEXICO
ENERGY AND MINERALS DEPARTMENTP. O. BOX 2088
SANTA FE, NEW MEXICO 87501Form C-107
Revised 10-1-78

All distances must be from the outer boundaries of the Section.

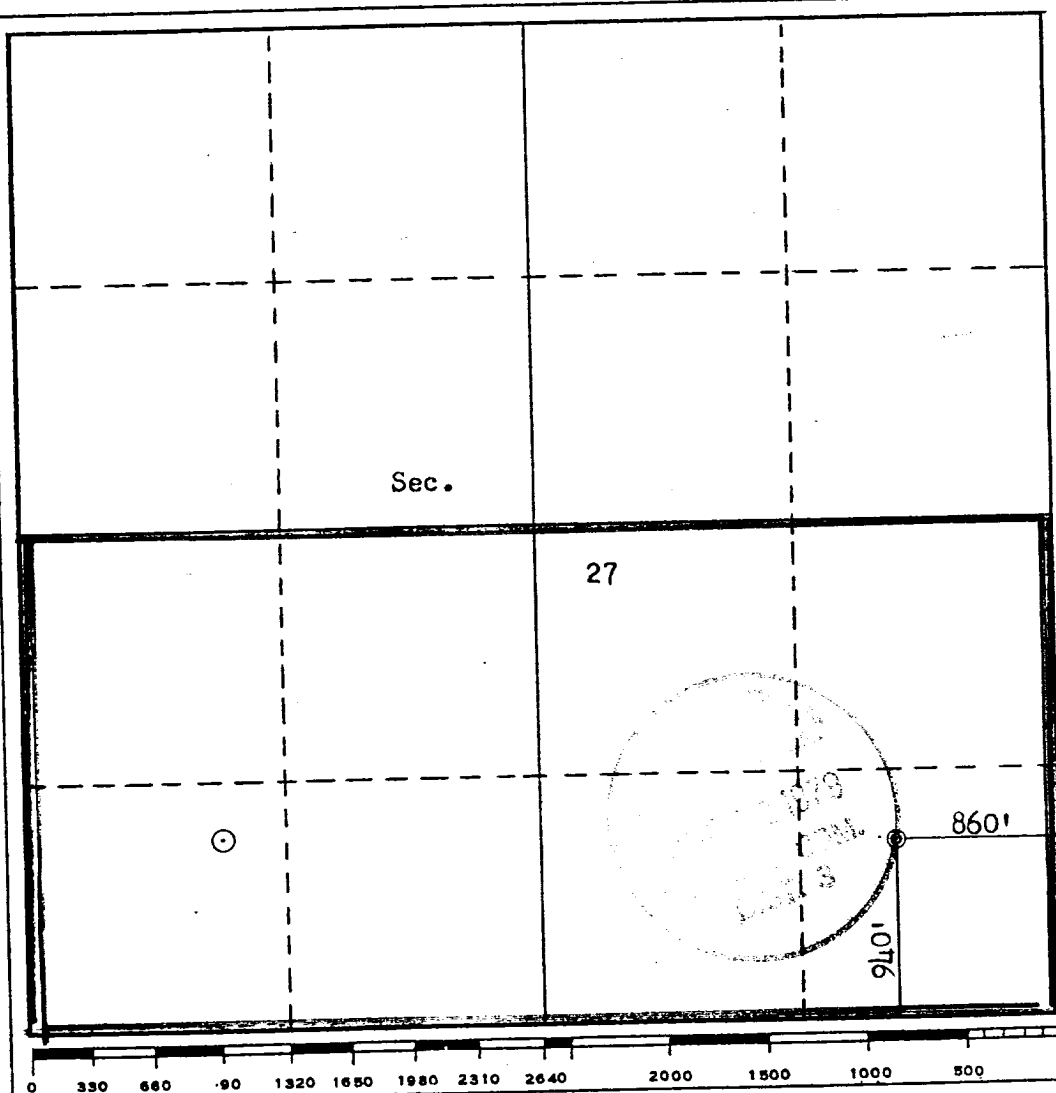
Operator AMOCO PRODUCTION COMPANY			Lease MADDOX GAS COM "C"		Well No. 1 E
Unit Letter P	Section 27	Township 29N	Range 10W	County San Juan	
Actual Footage Location of Well: 940 feet from the South line and 860 feet from the East line					
Ground Level Elev. 5529	Producing Formation Dakota		Pool Basin Dakota		Dedicated Acreage: 320 Acres

1. Outline the acreage dedicated to the subject well by colored pencil or hachure marks on the plat below.
2. If more than one lease is dedicated to the well, outline each and identify the ownership thereof (both as to working interest and royalty).
3. If more than one lease of different ownership is dedicated to the well, have the interests of all owners been consolidated by communitization, unitization, force-pooling, etc?

☒ Yes ☐ No If answer is "yes," type of consolidation Communitization

If answer is "no," list the owners and tract descriptions which have actually been consolidated. (Use reverse side of this form if necessary.)

No allowable will be assigned to the well until all interests have been consolidated (by communitization, unitization, forced-pooling, or otherwise) or until a non-standard unit, eliminating such interests, has been approved by the Commission.



CERTIFICATION

I hereby certify that the information contained herein is true and complete to the best of my knowledge and belief.

B. E. Fackrell

Name

B. E. FACKRELL

Position

DISTRICT ENGINEER

Company

AMOCO PRODUCTION COMPANY

Date

AUGUST 7, 1979

I hereby certify that the well location shown on this plat was plotted from field notes of actual surveys made by me or under my supervision, and that the same is true and correct to the best of my knowledge and belief.

Date Surveyed

August 1, 1979

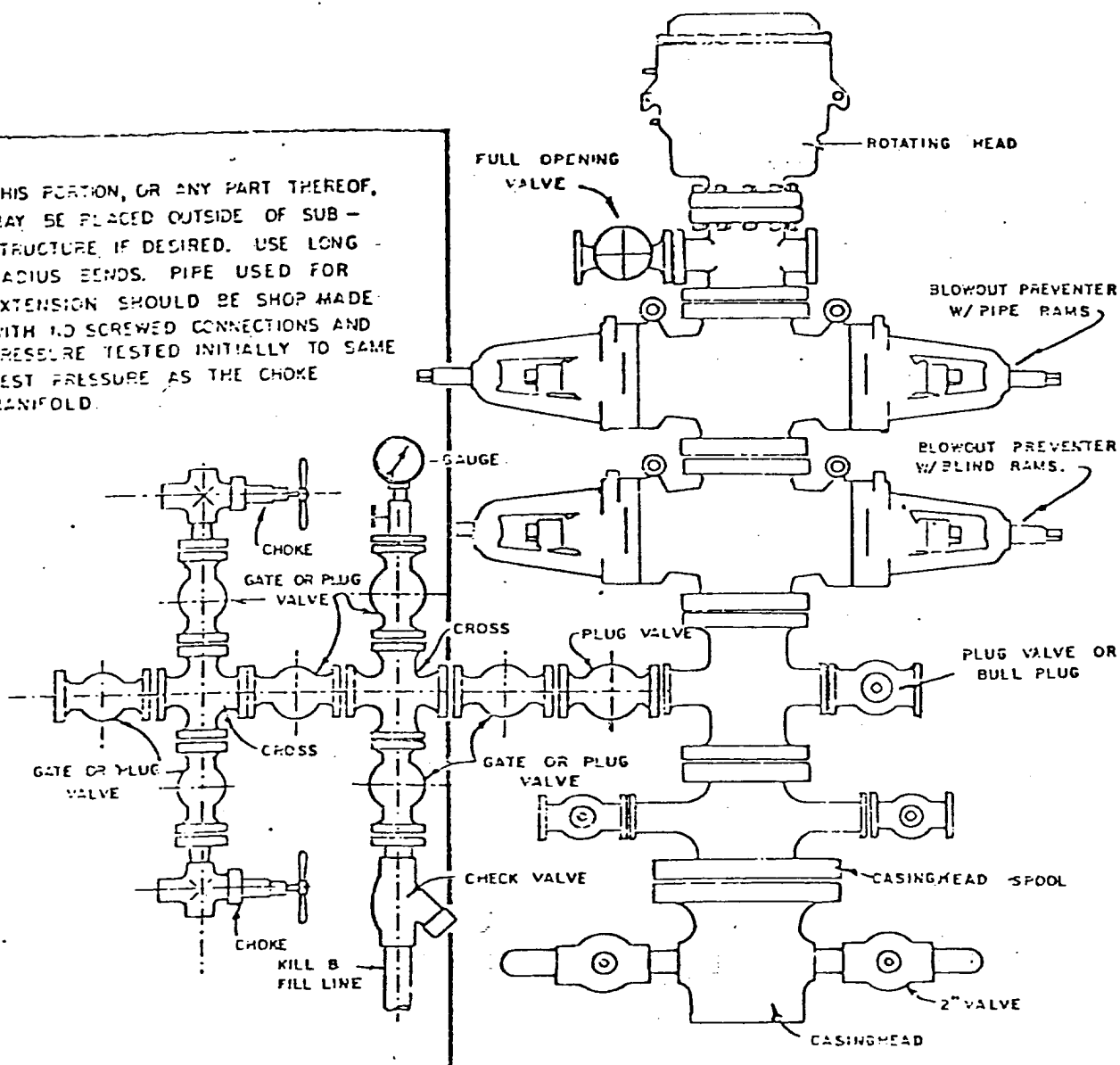
Registered Professional Engineer
and/or Land Surveyor*Red B. Kerr Jr.*

Certificate No.

3950

KERR, JR.

THIS PORTION, OR ANY PART THEREOF, MAY BE PLACED OUTSIDE OF SUB-STRUCTURE IF DESIRED. USE LONG-RADIUS BENDS. PIPE USED FOR EXTENSION SHOULD BE SHOP MADE WITH NO SCREWED CONNECTIONS AND PRESURE TESTED INITIALLY TO SAME TEST PRESSURE AS THE CHOKE MANIFOLD.



BLOWOUT PREVENTER HOCKUP