

NO. OF COPIES RECEIVED	6
DISTRIBUTION	
SANTA FE	1
FILE	2
U.S.G.S.	1
LAND OFFICE	
OPERATOR	

NEW MEXICO OIL CONSERVATION COMMISSION

30-045-23789
Form C-101
Revised 1-1-65

5A. Indicate Type of Lease	
STATE <input checked="" type="checkbox"/>	FEE <input type="checkbox"/>
5. State Oil & Gas Lease No.	
E-5462	

APPLICATION FOR PERMIT TO DRILL, DEEPEN, OR PLUG BACK

1a. Type of Work		7. Unit Agreement Name	
DRILL <input checked="" type="checkbox"/> DEEPEN <input type="checkbox"/> PLUG BACK <input type="checkbox"/>		Gallegos Canyon Unit	
b. Type of Well		8. Farm or Lease Name	
OIL WELL <input type="checkbox"/> GAS WELL <input checked="" type="checkbox"/> OTHER <input type="checkbox"/>		Gallegos Canyon Unit	
2. Name of Operator		9. Well No.	
Energy Reserves Group, Inc.		294	
3. Address of Operator		10. Field and Pool, or Wildcat	
P. O. Box 3280 Casper, Wyoming 82602		West Kutz Pictured Cliffs	
4. Location of Well		12. County	
UNIT LETTER J LOCATED 1750 FEET FROM THE South LINE		San Juan	
AND 1770 FEET FROM THE East LINE OF SEC. 32 TWP. 29N RGE. 12W NMPM			
		19. Proposed Depth	
		1600'	
		19A. Formation	
		Pictured Cliffs	
		20. Rotary or C.T.	
		Rotary	
21. Elevations (Show whether DF, RT, etc.)		22. Approx. Date Work will start	
5519		Sept., 1979	
21A. Kind & Status Plug. Bond		21B. Drilling Contractor	
Blanket 3881464		Bayless Drilling Company	

23.

PROPOSED CASING AND CEMENT PROGRAM

SIZE OF HOLE	SIZE OF CASING	WEIGHT PER FOOT	SETTING DEPTH	SACKS OF CEMENT	EST. TOP
12 1/4"	8 5/8"	17#	120'-200'	Cmt to surface	
6 3/4"	4 1/2"	9.5#	1600'	100 sx of cmt to surface	

Energy Reserves Group, Inc. proposes to drill the above referenced well with rotary tools from surface to T.D. The anticipated zone of completion is the Pictured Cliffs Formation @ 1350'-1600'. No cores are planned, no DST's are planned. Copies of all logs run will be furnished upon completion of the well. It is planned to drill 12 1/4" hole to 120'-200' maximum. Set 8 5/8" casing & cmt to the surface. Drill 6 3/4" hole to T.D., set 4 1/2" casing. Cement to surface if the Ojo Alamo Formation has not been cemented off by the surface casing. The BOE will consist of an 8" series 900, 3000# oval ram preventor.

gas is dechanted

APPROVAL VALID
FOR 90 DAYS UNLESS
DRILLING COMMENCED,

EXPIRES 12-11-79



IN ABOVE SPACE DESCRIBE PROPOSED PROGRAM: IF PROPOSAL IS TO DEEPEN OR PLUG BACK, GIVE DATA ON PRESENT PRODUCTIVE ZONE AND PROPOSED NEW PRODUCTIVE ZONE. GIVE BLOWOUT PREVENTER PROGRAM, IF ANY.

I hereby certify that the information above is true and complete to the best of my knowledge and belief.

Signed William J. Hays Title Field Services Administrator Date September 10, 1979

(This space for State Use)

APPROVED BY Frank S. Lang TITLE DEPUTY OIL & GAS INSPECTOR, DIST. #3 DATE SEP 12 1979

CONDITIONS OF APPROVAL, IF ANY:

OIL CONSERVATION DIVISION

STATE OF NEW MEXICO
ENERGY AND MINERALS DEPARTMENTP. O. BOX 2088
SANTA FE, NEW MEXICO 87501Form C-102
Revised 10-1-78

All distances must be from the outer boundaries of the Section.

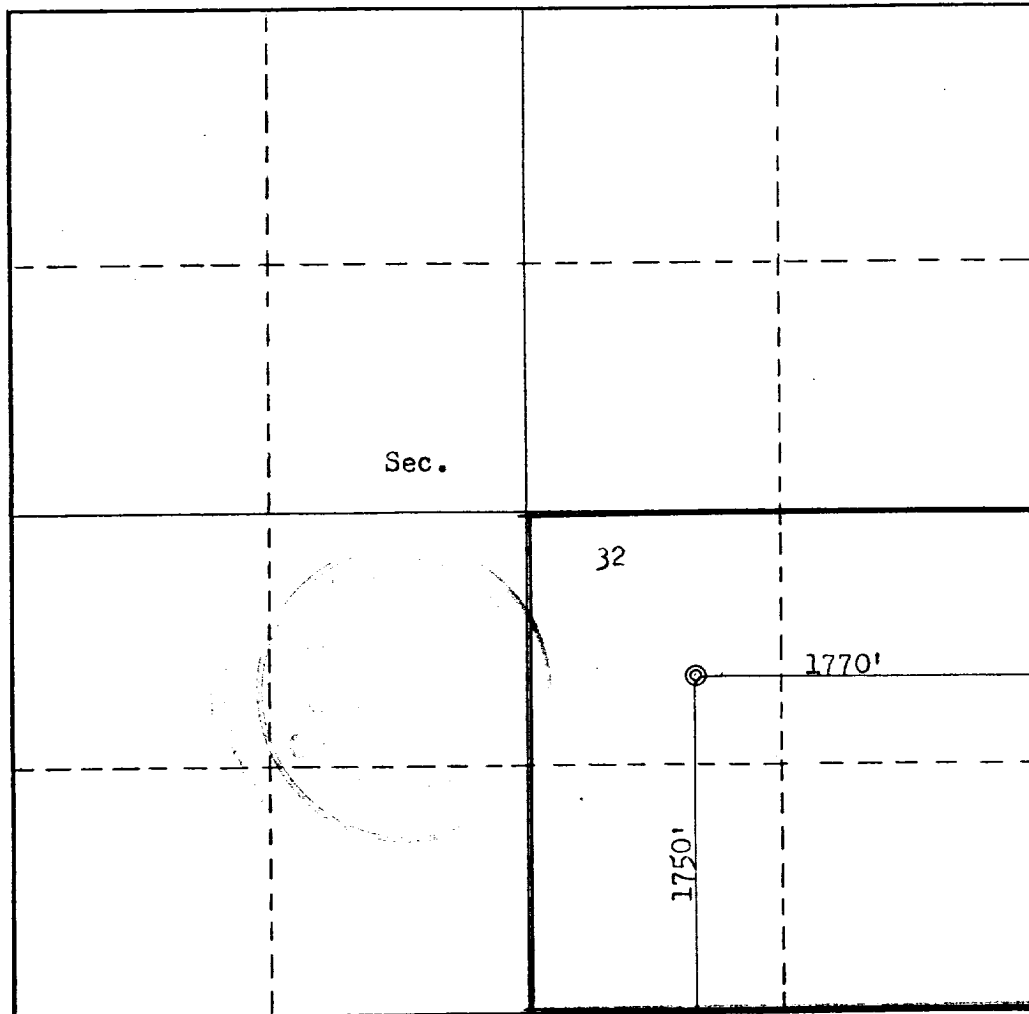
Operator ENERGY RESERVES GROUP			Lease GALLEGOS CANYON UNIT		Well No. 294
Unit Letter J	Section 32	Township 29N	Range 12W	County San Juan	
Actual Footage Location of Well: 1750 feet from the South line and 1770 feet from the East line					
Ground Level Elev. 5519	Producing Formation Pictured Cliffs		Pool West Kutz Pictured Cliffs		Dedicated Acreage: 160 Acres

1. Outline the acreage dedicated to the subject well by colored pencil or hachure marks on the plat below.
2. If more than one lease is dedicated to the well, outline each and identify the ownership thereof (both as to working interest and royalty).
3. If more than one lease of different ownership is dedicated to the well, have the interests of all owners been consolidated by communitization, unitization, force-pooling, etc?

☐ Yes ☐ No If answer is "yes," type of consolidation _____

If answer is "no," list the owners and tract descriptions which have actually been consolidated. (Use reverse side of this form if necessary.) _____

No allowable will be assigned to the well until all interests have been consolidated (by communitization, unitization, forced-pooling, or otherwise) or until a non-standard unit, eliminating such interests, has been approved by the Commission.



CERTIFICATION

I hereby certify that the information contained herein is true and complete to the best of my knowledge and belief.

Name _____
Position
Field Services Administrator
Company
Energy Reserves Group, Inc.
Date
September 10, 1979

I hereby certify that the well location shown on this plat was plotted from field notes of actual surveys made by me or under my supervision, and that the same is true and correct to the best of my knowledge and belief.

Date Surveyed
September 14, 1979
Registered Professional Engineer
and/or Land Surveyor
3950
Certification No.
3950