

UNITED STATES  
DEPARTMENT OF THE INTERIOR  
GEOLOGICAL SURVEY*Amended (Other instructions on reverse side)  
location and  
starts from fee  
to last*

## APPLICATION FOR PERMIT TO DRILL, DEEPEN, OR PLUG BACK

## 1a. TYPE OF WORK

DRILL ☒DEEPEN ☐PLUG BACK ☐

## b. TYPE OF WELL

OIL WELL ☐ GAS WELL ☒ OTHER ☐SINGLE ZONE ☒ MULTIPLE ZONE ☐

## 2. NAME OF OPERATOR

Southland Royalty Company

## 3. ADDRESS OF OPERATOR

P. O. Drawer 570, Farmington, NM 87401

## 4. LOCATION OF WELL (Report location clearly and in accordance with any State requirements.)\*

At surface  
870' FNL & 1760' FEL  
At proposed prod. zone

## 14. DISTANCE IN MILES AND DIRECTION FROM NEAREST TOWN OR POST OFFICE\*

Approximately 4 1/2 miles east of Farmington, NM

## 15. DISTANCE FROM PROPOSED\*

LOCATION TO NEAREST  
PROPERTY OR LEASE LINE, FT.  
(Also to nearest drlg. unit line, if any) 790'18. DISTANCE FROM PROPOSED LOCATION\*  
TO NEAREST WELL, DRILLING, COMPLETED,  
OR APPLIED FOR, ON THIS LEASE, FT.

2794'

## 16. NO. OF ACRES IN LEASE

400

## 19. PROPOSED DEPTH

6464'

17. NO. OF ACRES ASSIGNED  
TO THIS WELL

E 320

## 20. ROTARY OR CABLE TOOLS

Rotary

## 21. ELEVATIONS (Show whether DF, RT, GR, etc.)

5694' GR

## 22. APPROX. DATE WORK WILL START\*

March 15, 1980

## 23.

## PROPOSED CASING AND CEMENTING PROGRAM

| SIZE OF HOLE | SIZE OF CASING | WEIGHT PER FOOT | SETTING DEPTH | QUANTITY OF CEMENT |
|--------------|----------------|-----------------|---------------|--------------------|
| 12 1/4"      | 8 5/8"         | 24#             | 200'          | 140 Sacks          |
| 7 7/8"       | 4 1/2"         | 10.5#           | 6464'         | 206 Sacks          |

Surface formation is Nacimiento.

Top of Ojo Alamo sand is at 794'.

Top of Pict. Cliffs sand is at 1744'.

Fresh water mud will be used to drill from surface to total depth.

It is anticipated that an IES and a GR-Density log will be run at total depth.

No abnormal pressures or poisonous gases are anticipated in this well.

It is expected that this well will be drilled before July 31, 1980. This depends on time required for approval, rig availability and the weather.

Gas is dedicated.

IN ABOVE SPACE DESCRIBE PROPOSED PROGRAM: If proposal is to deepen or plug back, give data on present productive zone and proposed new productive zone. If proposal is to drill or deepen directionally, give pertinent data on subsurface locations and measured and true vertical depths. Give blowout preventer program, if any.

## 24.

SIGNED

*CC Parson*

TITLE

District Engineer

DATE

12-31-79

(This space for Federal or State office use)

PERMIT NO.

APPROVAL DATE

APPROVED BY

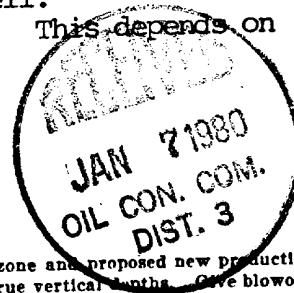
TITLE

DATE

CONDITIONS OF APPROVAL, IF ANY:

*ok Erik*

NM000



## OIL CONSERVATION DIVISION

STATE OF NEW MEXICO  
ENERGY AND MINERALS DEPARTMENTP. O. BOX 2088  
SANTA FE, NEW MEXICO 87501Form C-107  
Revised 10-1-78

All distances must be from the outer boundaries of the Section.

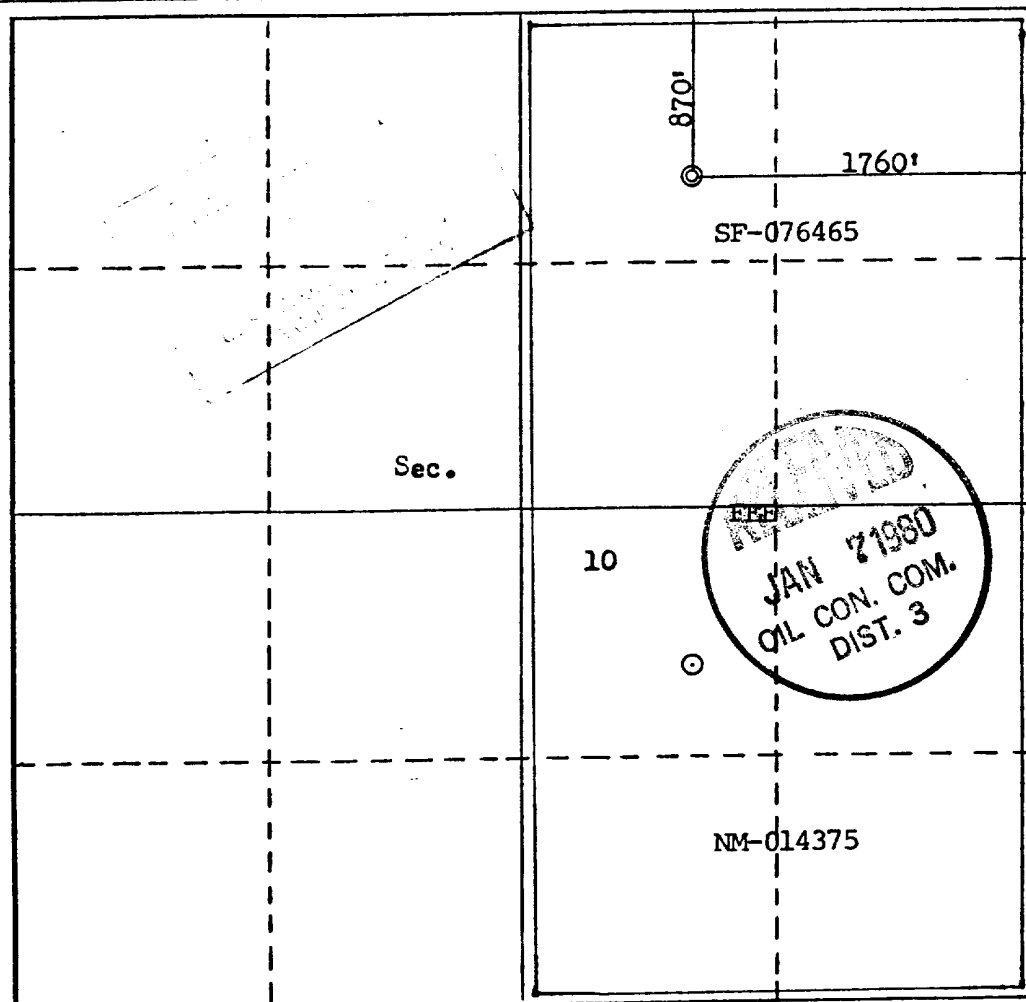
|   |                                      |                        |                          |  |                        |
|---|--------------------------------------|------------------------|--------------------------|--|------------------------|
| Operator<br><b>SOUTHLAND ROYALTY COMPANY</b>  |                                      |                        | Lease<br><b>BECK "A"</b> |  | Well No.<br><b>1-E</b> |
| Unit Letter<br><b>B</b>   | Section<br><b>10</b>                 | Township<br><b>29N</b> | Range<br><b>12W</b>      | County<br><b>San Juan</b>              |                        |
| Actual Footage Location of Well:<br><b>870</b> feet from the <b>North</b> line and <b>1760</b> feet from the <b>East</b> line |                                      |                        |                          |  |                        |
| Ground Level Elev.<br><b>5694</b>   | Producing Formation<br><b>Dakota</b> |                        | Pool<br><b>Basin</b>     | Dedicated Acreage:<br><b>320</b> Acres |                        |

1. Outline the acreage dedicated to the subject well by colored pencil or hatchure marks on the plat below.
2. If more than one lease is dedicated to the well, outline each and identify the ownership thereof, (both as to working interest and royalty).
3. If more than one lease of different ownership is dedicated to the well, have the interests of all owners been consolidated by communitization, unitization, force-pooling, etc?

☒ Yes ☐ No If answer is "yes," type of consolidation Communitized

If answer is "no," list the owners and tract descriptions which have actually been consolidated. (Use reverse side of this form if necessary.)

No allowable will be assigned to the well until all interests have been consolidated (by communitization, unitization, forced-pooling, or otherwise) or until a non-standard unit, eliminating such interests, has been approved by the Commission.



## CERTIFICATION

I hereby certify that the information contained herein is true and complete to the best of my knowledge and belief.

Name  
**Curtis C. Parsons**  
Position  
**District Engineer**  
Company  
**Southland Royalty Company**  
Date  
**December 27, 1979**

I hereby certify that the well location shown on this plat was plotted from field notes of actual surveys made by me or under my supervision, and that the same is true and correct to the best of my knowledge and belief.

Date Surveyed  
**December 18, 1979**  
Registered Professional Engineer  
and/or Land Surveyor.  
**Fred B. Kerr, Jr.**  
Certificate No. **22336**  
**B. KERR, JR.**

# DRILLING SCHEDULE - BECK "A" #1E

Location: 870' FNL & 1760' FEL, Section 10, T29N, R12W, San Juan County, New Mexico

Field: Basin Dakota

## Geology:

|                 |                 |       |             |       |
|-----------------|-----------------|-------|-------------|-------|
| Formation Tops: | Ojo Alamo       | 794'  | Gallup      | 5384' |
|                 | Fruitland       | 1414' | Graneros    | 6184' |
|                 | Pictured Cliffs | 1744' | Dakota      | 6314' |
|                 | Cliff House     | 3309' | Total Depth | 6464' |
|                 | Pt. Lookout     | 4104' |             |       |

Logging Program: IES & GR-Density from TD to surface casing.

Coring Program: None

Natural Gauges: None

## Drilling:

Contractor:

Tool Pusher:

SRC Ans. Service: 325-1841

SRC Representative:

Dispatch Number: 325-7391

Mud Program: Fresh water to 5000'. Fresh water mud from 5000' to TD.  
Maintain 9.0 to 9.3 mud wt, 35-40 viscosity, 10-12 cc water loss.

## Materials:

| Csg. Program: | Hole size | Depth | Casing size | Wt. & Grade |
|---------------|-----------|-------|-------------|-------------|
|               | 12-1/4"   | 200'  | 8-5/8"      | 24# H-40    |
|               | 7-7/8"    | 6464' | 4-1/2"      | 10.5# K-55  |

## Float Equipment:

8-5/8" surface casing: Pathfinder type "A" guide shoe.

4-1/2" production casing: Pathfinder type "A" guide shoe. Pathfinder self-fill flapper type float collar. Run 1 jt off bottom. Five Pathfinder rigid stabilizers (run every other jt. above shoe). Dowell stage tool at 4400' with 1 cement basket below and five Pathfinder centralizers above tool.

Wellhead Equipment: 8-5/8" X 10", 2000# bradenhead with 4-1/2" casing hanger. 10", 2000# X 6" psi tubing head and tree.

Cementing Program:

8-5/8" surface casing: 140 sxs or 165 cu. ft. of Class "B" with 1/4# gel-flake per sack and 3% CaCl. WOC 12 hrs. Test to 600# prior to drilling out.  
(Volume is 100% Excess)

4-1/2" Production String: Stage 1: 206 sxs or 308 cu. ft. of 50/50 Poz with 6% gel, 1/4# gel flake/sx, 0.6% Halad 9 or equivalent.  
(25% Excess)

Stage 2: 827 sxs or 1,232 cu. ft. of the same cement as above.  
(50% Excess)

WOC & Circulate between stages as required by well conditions.

\_\_\_\_\_  
L. O. Van Ryan

\_\_\_\_\_  
\_\_\_\_\_  
(Date)



**Southland Royalty Company**

December 31, 1979

United States Geological Survey  
Mr. James Sims  
P. O. Box 959  
Farmington, NM 87401

Dear Sir:

Enclosed please find a map showing existing roads and planned access roads to Southland Royalty Company's Beck "A" #1E well.

The locations of tank batteries and flow lines will be on location with well. A burn pit will be provided for disposal of trash. Cuttings, drilling fluid and produced fluids will be put into the reserve pit and properly disposed of depending on amount and type of fluids.

There will be no camps or airstrips.

Also, enclosed is a location layout showing approximate location of rig, pits and pipe racks.

Water supply will be the San Juan River.

The location will be restored according to Bureau of Land Management standards. This work will begin when all related construction is finished.

Mr. Ross Lankford will be Southland Royalty Company's field representative supervising these operations.

Yours truly,

Curtis C. Parsons  
District Engineer

OCP/ke



**Southland Royalty Company**

December 31, 1979

United States Geological Survey  
Mr. James Sims  
P. O. Box 959  
Farmington, NM 87401

RE: Blowout Preventer Plan

Dear Sir:

All drilling and completion rigs will be equipped with 6" or larger double hydraulic blowout preventers and a hydraulic closing unit with steel lines.

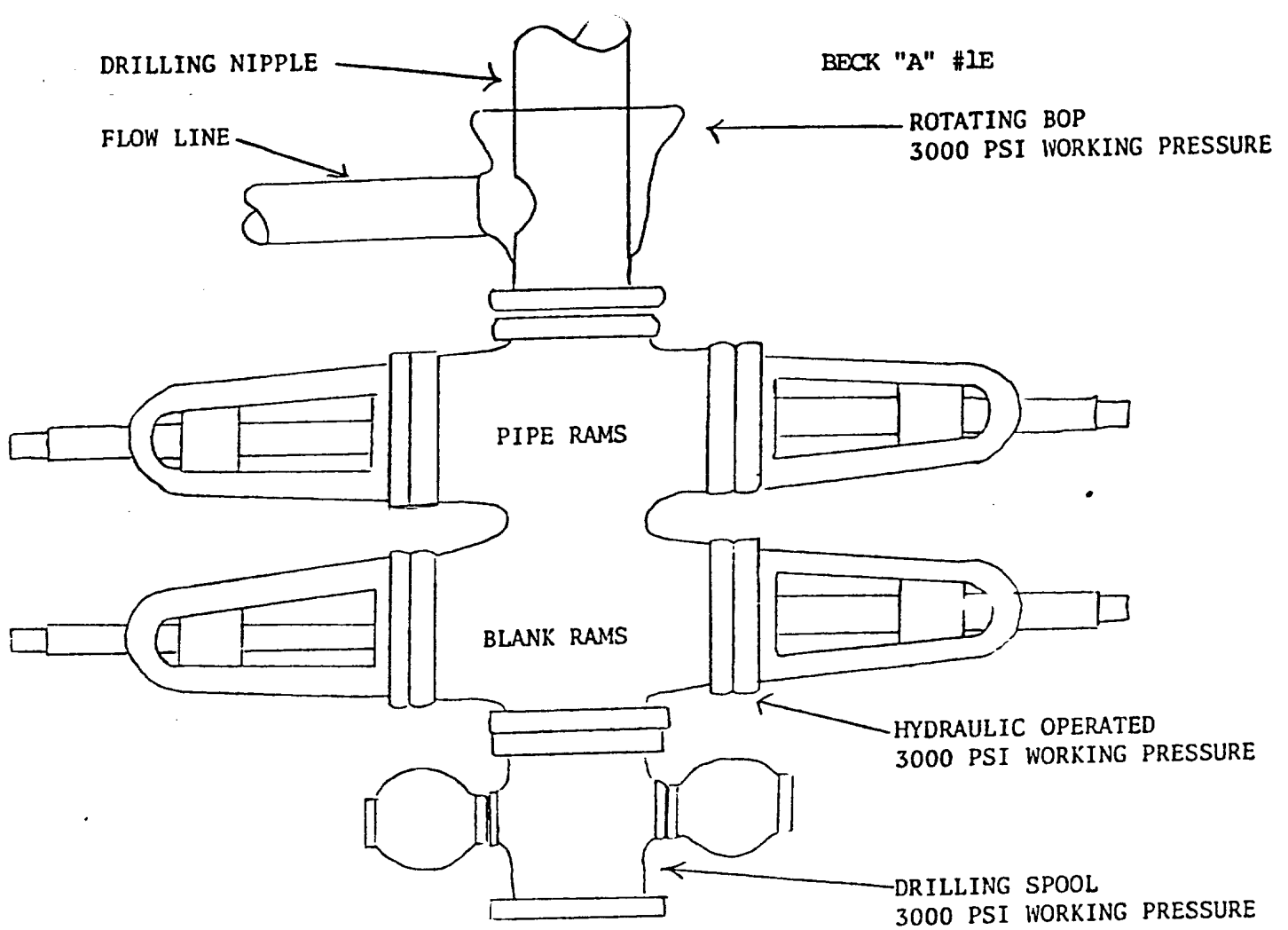
The preventer is 3000# working pressure and 6000# test pressure.

All crews will be thoroughly trained in the operation of this preventer. The preventer will be tested frequently enough to insure proper operation.

Yours truly,

Curtis C. Parsons  
District Engineer

CCP/ke



PREVENTERS AND SPOOLS ARE TO HAVE  
THROUGH BORE OF 6" - 3000 PSI OR LARGER



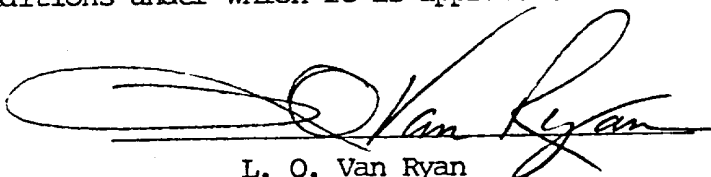
**Southland Royalty Company**

United States Geological Survey  
Mr. James Sims  
P. O. Box 595  
Farmington, NM 87401

Dear Sir:

I hereby certify that I, or persons under my direct supervision, have inspected the proposed drillsite and access route; that I am familiar with the conditions which presently exist; that the statements made in this plan are, to the best of my knowledge, true and correct; and, that the work associated with the operations proposed herein will be performed by Southland Royalty Company and its contractors and subcontractors in conformity with this plan and the terms and conditions under which it is approved.

Date: December 31, 1979



L. O. Van Ryan  
District Production Manager

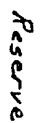
LOVR/ke





Vert. 1"=40'

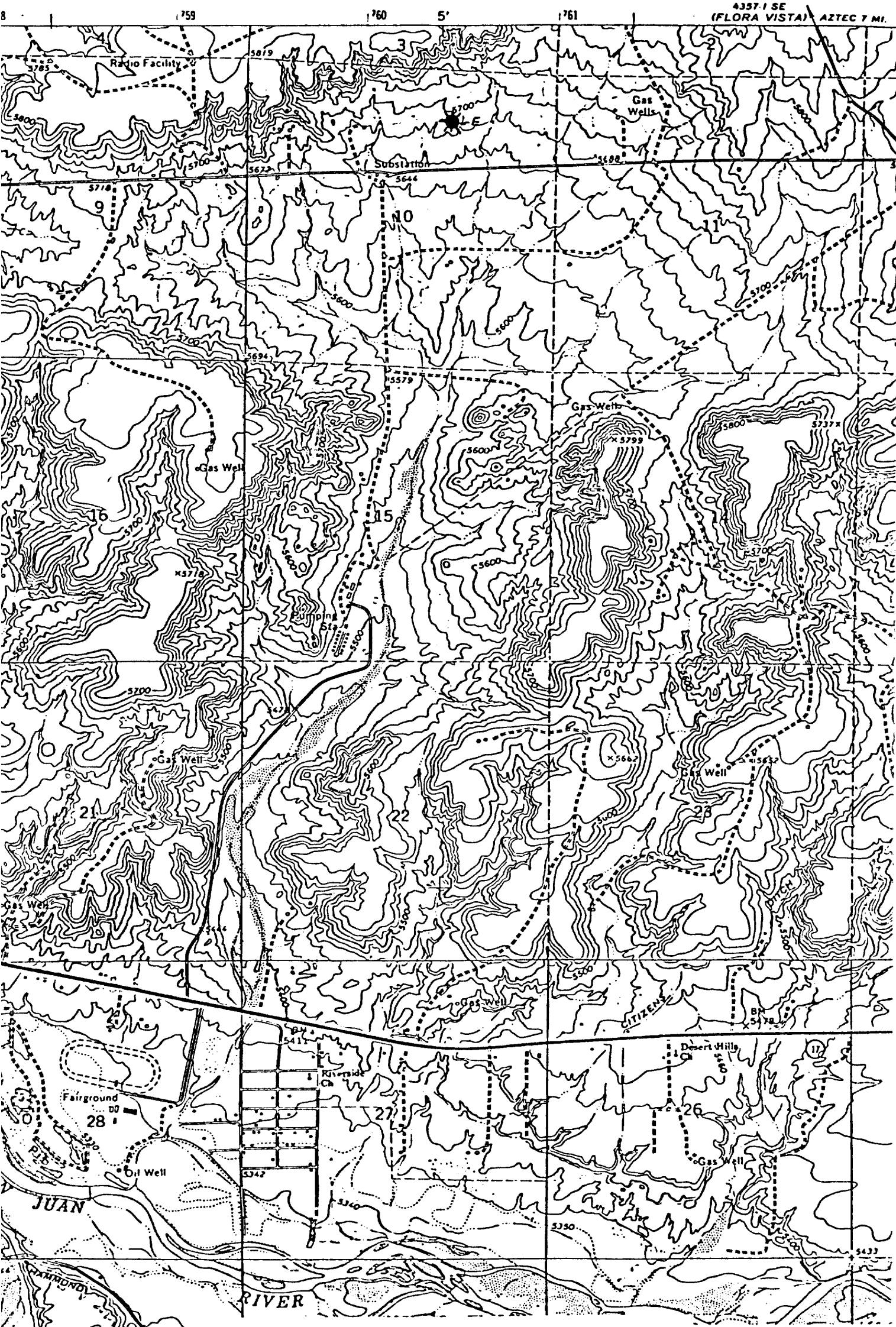
क. स. स.



Vert: 1"=40'

D-D'

TERIOR  
Y



Vicinity Map for  
SOUTHLAND ROYALTY COMPANY #1-E BECK "A"  
870'FNL 1760'FEL Sec 10-T29N-R12W  
SAN JUAN COUNTY, NEW MEXICO

Proposed Location \*  
Existing Locations ©  
Proposed Road ---  
Existing Roads —