



STATE OF NEW MEXICO
ENERGY AND MINERALS DEPARTMENT
OIL CONSERVATION DIVISION
AZTEC DISTRICT OFFICE

BRUCE KING
GOVERNOR

LARRY KEHOE
SECRETARY

1000 RIO BRAZOS ROAD
AZTEC, NEW MEXICO 87410
(505) 334-6178

ORDER NO. MC-3-006

ADMINISTRATIVE ORDER
OF THE OIL CONSERVATION DIVISION

Under the provisions of Rule 112-A Pioneer Production Corporation made application to the New Mexico Oil Conservation Division for permission to dually complete its Salmon Well No. 1E located in Unit B of Section 30, Township 29 North, Range 11 West, NMPM, San Juan County, New Mexico, in such a manner as to permit production of gas from the Undesignated Chacra and the Basin Dakota Pools.

Now, on this 1st day of February, 1982, the Division finds:

1. That application has been filed under the provisions of Rule 112-A of the Division's Rules and Regulations;
2. That the proposed dual completion will not cause waste nor impair correlative rights; and
3. That the mechanics of the proposed dual completion are feasible and consonant with good conservation practices.

IT IS THEREFORE ORDERED:

That the applicant herein, Pioneer Production Corporation, be and the same is hereby authorized to dually complete its Salmon Well No. 1E located in Unit B of Section 30, Township 29 North, Range 11 West, NMPM, San Juan County, New Mexico, in such a manner as to permit production of gas from the Undesignated Chacra and the Basin Dakota Pools through parallel strings of tubing.

PROVIDED HOWEVER, that applicant shall complete, operate, and produce said well in accordance with the provisions of Rule 112-A.

PROVIDED FURTHER, that applicant shall take packer-leakage tests upon completion and annually thereafter.

This order may be rescinded if waste or reservoir damage results or if conditions render the installation no longer eligible for multiple completion.

STATE OF NEW MEXICO
OIL CONSERVATION DIVISION

A handwritten signature in dark ink, appearing to read "Frank T. Chavez".
Frank T. Chavez
District Supervisor

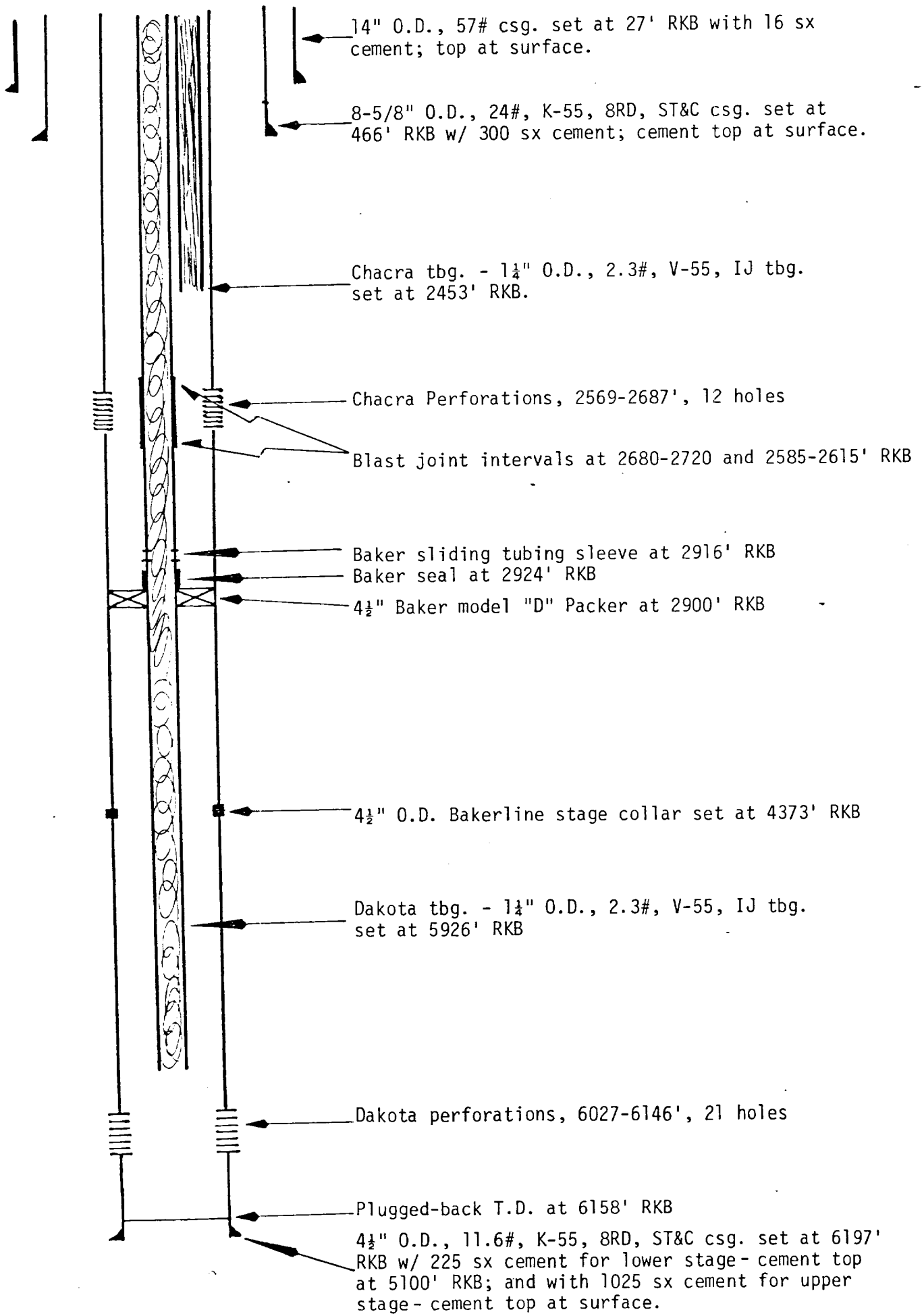
PIONEER PRODUCTION CORP.

Salmon #1E

San Juan County, NM

Application for Multiple Compl.

NOT DRAWN TO SCALE

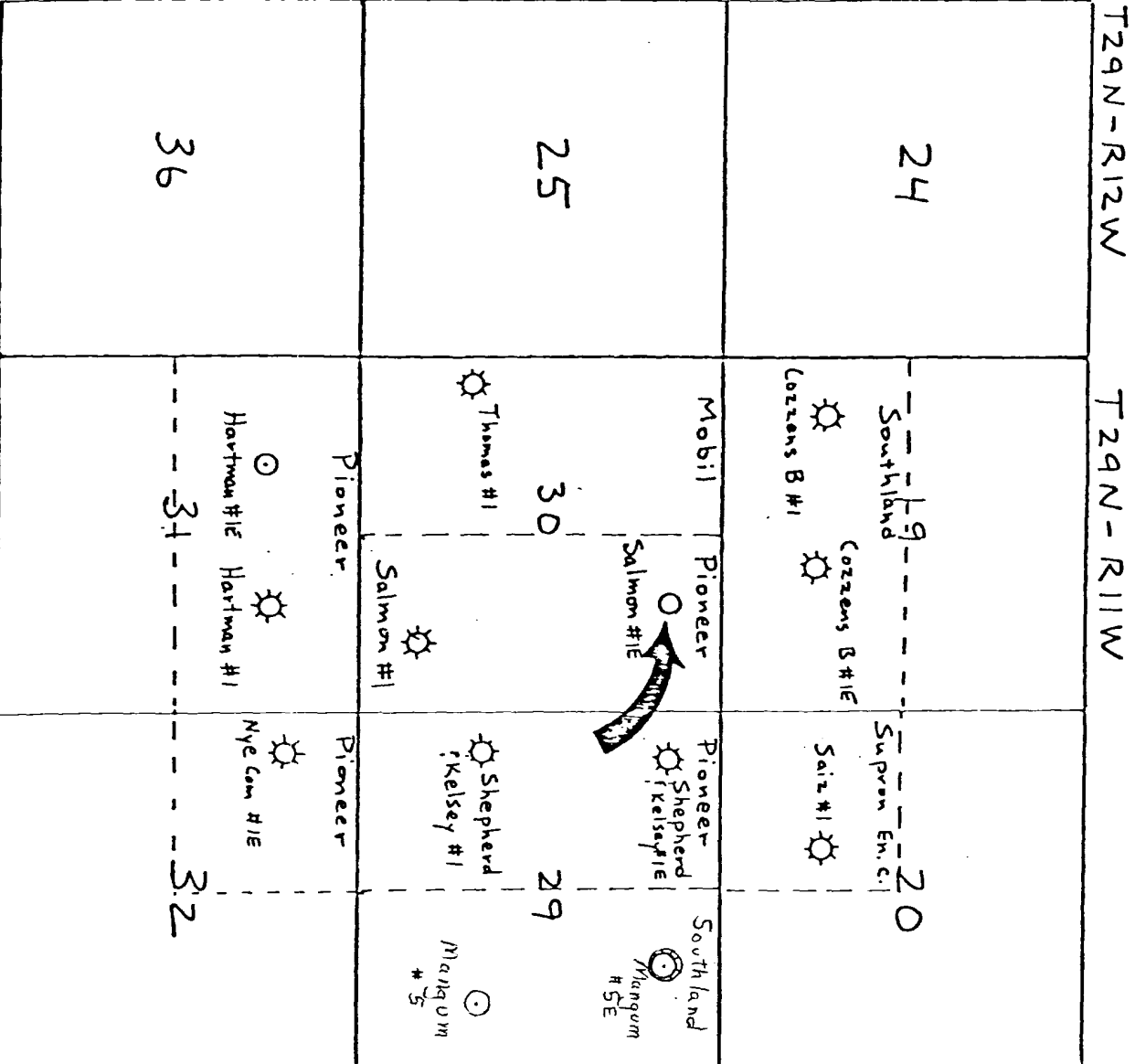


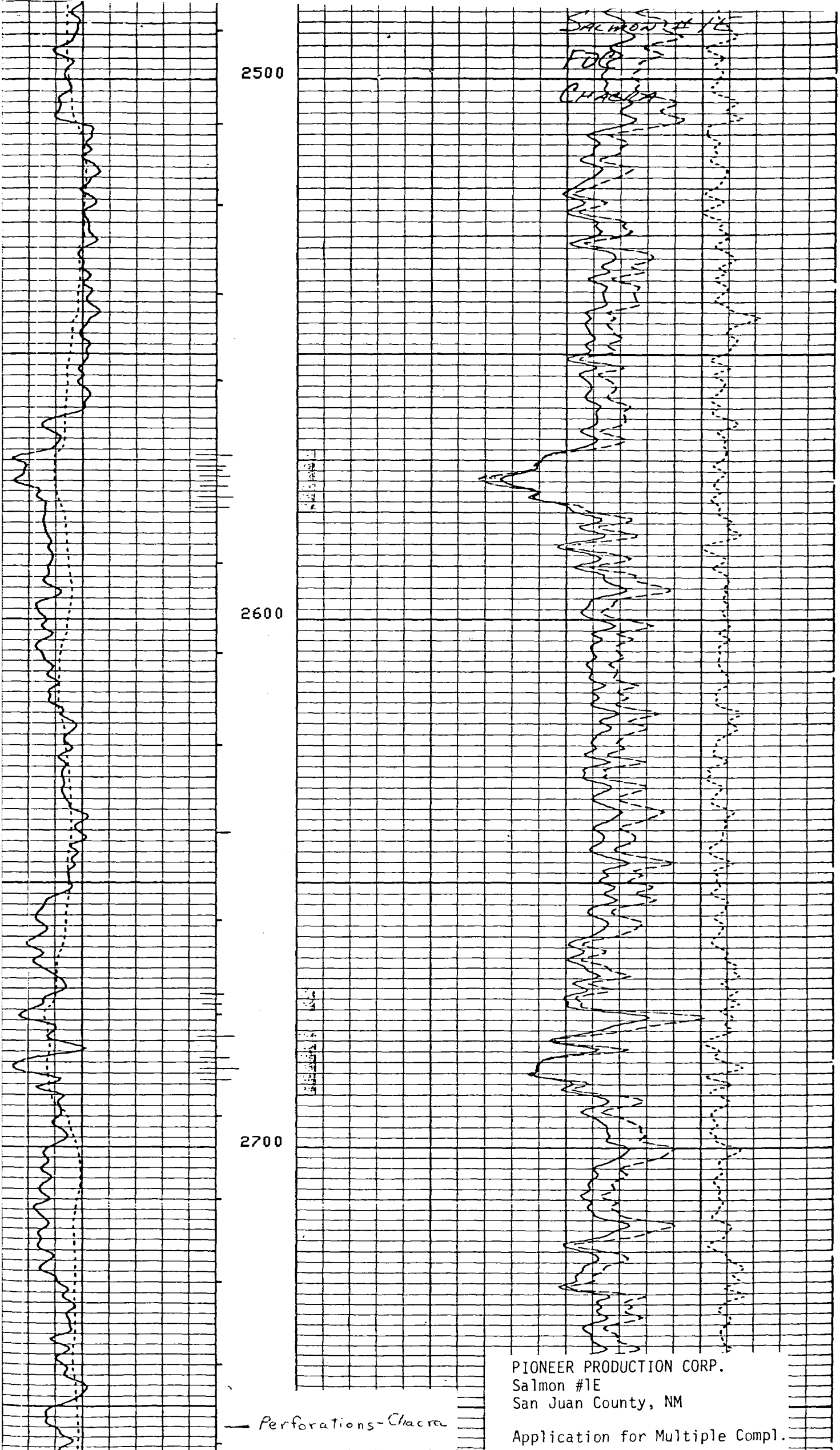
OFFSETTING OPERATORS

Southland Royalty Co.
Sec 19 T29N R11W S/2

Supron Energy Corp.
Sec 20 T29N R11W SW/4

Mobil Oil Corp.
Sec 30 T29N R11W W/2





2500

2600

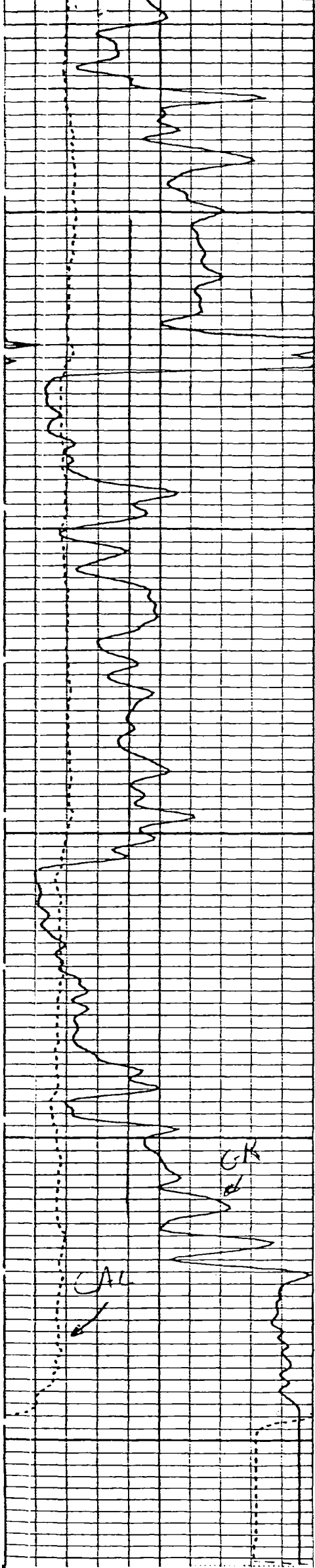
2700

— Perforations-Chacra

SALMON #1E
FOG
CHACRA

PIONEER PRODUCTION CORP.
Salmon #1E
San Juan County, NM

Application for Multiple Compl.



6000

6100

FR GR

FR WL

FR 17AC

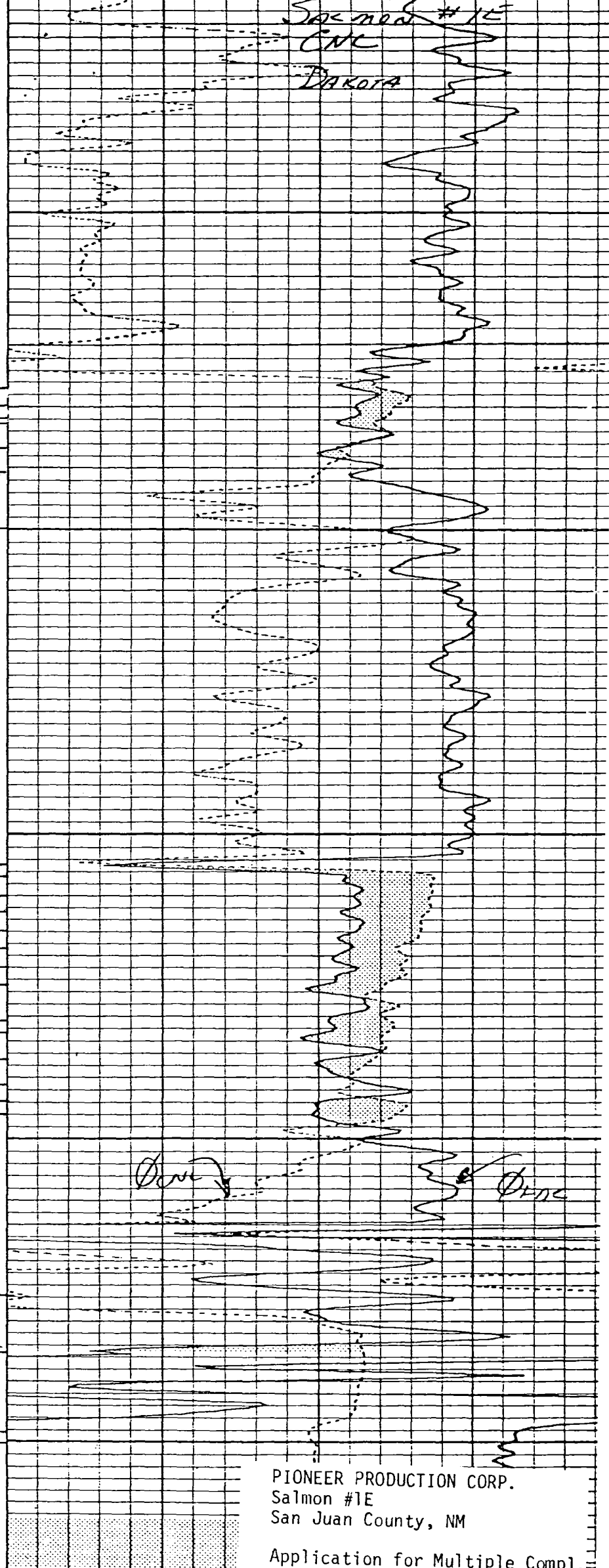
6200

TD

6200

FILE

12



PIONEER PRODUCTION CORP.
Salmon #1E
San Juan County, NM

Application for Multiple Compl.

Perforations-Dakota