

NO. OF COPIES RECEIVED	
DISTRIBUTION	
SANTA FE	
FILE	
U.S.G.S.	
LAND OFFICE	
OPERATOR	

5A. Indicate Type of Lease
STATE ☐ FEE ☒

5. State Oil & Gas Lease No.

APPLICATION FOR PERMIT TO DRILL, DEEPEN, OR PLUG BACK

Type of Work

DRILL ☒

DEEPEN ☐

PLUG BACK ☐

Type of Well

OIL ☒

GAS ☐

OTHER

SINGLE ☒

MULTIPLE ☐

Name of Operator

Caribou Four Corners, Inc.

Address of Operator

Box 627, Kirtland, New Mexico 87417

Location of Well

UNIT LETTER F

LOCATED 2150

FEET FROM THE North LINE

1750

FEET FROM THE West

LINE OF SEC. 3

TWP. 29N

RGE. 15W

NMPM

7. Unit Agreement Name

8. Farm or Lease Name

Fruitland

9. Well No.

#2

10. Field and Pool, or Wildcat

Meadows Gallup

12. County

San Juan

19. Proposed Depth

4600'

19A. Formation

Gallup

20. Rotary or C.T.

Rotary

21. (Show whether H, K, etc.)

21.9 G.L.

21A. Kind & Status Plug. Bond

Statewide

21B. Drilling Contractor

Aztec Well Service

22. Approx. Date Work will start

12-7-81

PROPOSED CASING AND CEMENT PROGRAM

SIZE OF HOLE	SIZE OF CASING	WEIGHT PER FOOT	SETTING DEPTH	SACKS OF CEMENT	EST. TOP
1 1/2"	8 5/8"	23#	330'	275	Circ.
7 7/8"	4 1/2"	9.5#	4600'	1000	Circ.

I. Drill to approx. 340' set 8 jts 8 5/8" 23# Tallying approx. 330'.

II. Cement surface W/275 sx, circ. to surface.

III. Drill 7 7/8" hole to 4600' which should log Sonostee Marker

IV. Run Dual-Ind-SFL and FDC. CWL Schlumberger

V. Run to approximately 4600' with 9.5# 4 1/2" casing

VI. Cement casing in two stages with a total of 1000 sx. cement, Circ. cement.



APPROVAL VALID
FOR 90 DAYS UNLESS
DRILLING COMMENCED,

June 18, 1982

ABOVE SPACE DESCRIBE PROPOSED PROGRAM: IF PROPOSAL IS TO DEEPEN OR PLUG BACK, GIVE DATA OF PRESENT PRODUCTIVE ZONE AND PROPOSED NEW PRODUCTION. GIVE BLOWOUT PREVENTER PROGRAM, IF ANY.

I hereby certify that the information above is true and complete to the best of my knowledge and belief.

Frank Busch Title Area Manager

Date 12-7-81

(This space for State Use)

SUPERVISOR DISTRICT # 3

DEC 18 1981

FILED BY Frank J. Chang TITLE

DATE

REMARKS OF APPROVAL, IF ANY:

BOP required

STATE OF NEW MEXICO NATURAL CONSERVATION DIVISION

STATE OF NEW MEXICO
GEOLOGY AND MINERALS DEPARTMENT

P. O. BOX 2088

SANTA FE, NEW MEXICO 87501

Form C-107
Revised 10-1-78

All distances must be from the outer boundaries of the Section.

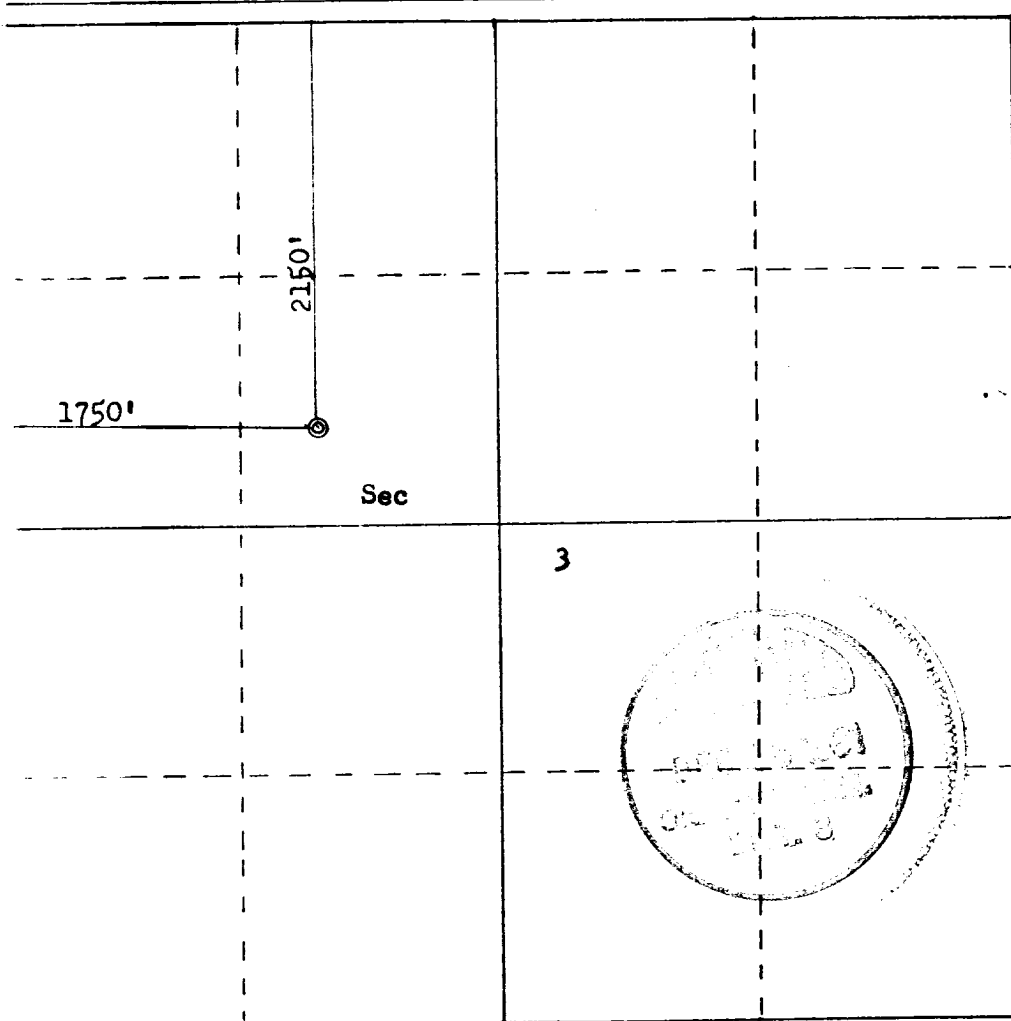
Operator Caribou-Four Corners Inc.			Lease Fruitland		Well No. 2
Grid Letter F	Section 3	Township 29N	Range 15W	County San Juan	
Actual Footage Location of Well:					
2150 feet from the North line and		1750 feet from the West line			
Ground Level Elev: 5219	Producing Formation Gallup	Pool Meadows		Dedicated Acreage: 40	Acres

1. Outline the acreage dedicated to the subject well by colored pencil or hachure marks on the plat below.
2. If more than one lease is dedicated to the well, outline each and identify the ownership thereof (both as to working interest and royalty).
3. If more than one lease of different ownership is dedicated to the well, have the interests of all owners been consolidated by communitization, unitization, force-pooling, etc?

☒ Yes ☐ No If answer is "yes," type of consolidation Lease communitization clause under Meadows spacing unit

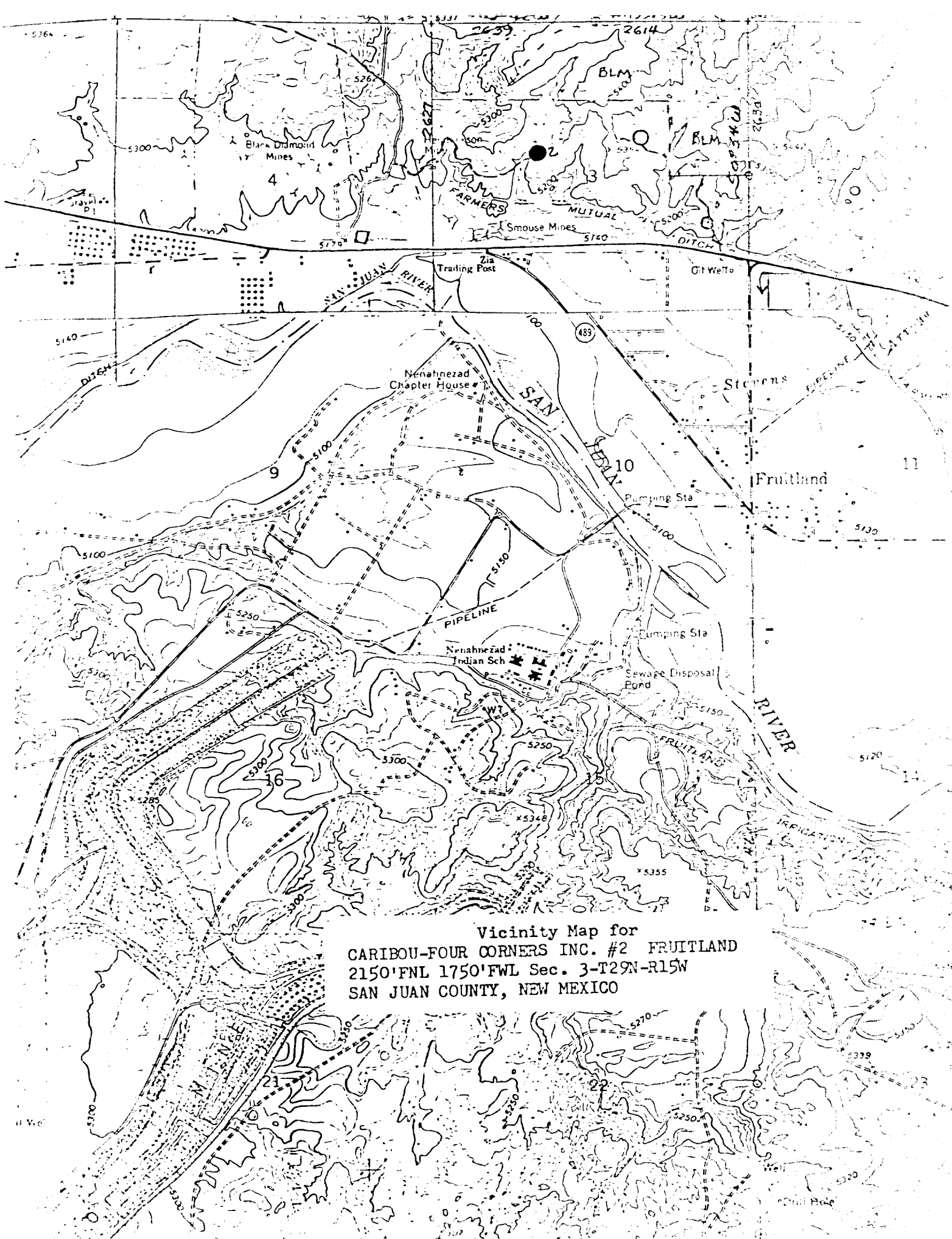
If answer is "no," list the owners and tract descriptions which have actually been consolidated. (Use reverse side of this form if necessary.) _____

No allowable will be assigned to the well until all interests have been consolidated (by communitization, unitization, forced-pooling, or otherwise) or until a non-standard unit, eliminating such interests, has been approved by the Commission.



Scale: 1"=1000'

CERTIFICATION	
I hereby certify that the information contained herein is true and complete to the best of my knowledge and belief.	
Name	Ernie Busch
Position	Area Manager
Company	Caribou Four Corners, Inc.
Date	December 8, 1981
I hereby certify that the well location shown on this plat was plotted from field notes of actual surveys made by me or under my supervision, and that the same is true and correct to the best of my knowledge and belief.	
Date Surveyed	5-26-82
Registered Professional Engineer and Land Surveyor	Fred B. Kerr Jr.
Certificate No.	3950



Vicinity Map for
CARIBOU-FOUR CORNERS INC. #2 FRUITLAND
2150'FNL 1750'FWL Sec. 3-T29N-R15W
SAN JUAN COUNTY, NEW MEXICO