

UNITED STATES
DEPARTMENT OF THE INTERIOR
GEOLOGICAL SURVEY

30-040-25609

APPLICATION FOR PERMIT TO DRILL, DEEPEN, OR PLUG BACK

1a. TYPE OF WORK
DRILL ☒ DEEPEN ☐ PLUG BACK ☐

b. TYPE OF WELL
OIL WELL ☒ GAS WELL ☐ OTHER ☐ SINGLE ZONE ☒ MULTIPLE ZONE ☐

2. NAME OF OPERATOR
Union Texas Petroleum Corporation

3. ADDRESS OF OPERATOR
P. O. Box 808, Farmington, New Mexico 87499

4. LOCATION OF WELL (Report location clearly and in accordance with any State requirements.)
At surface 495 ft./South line and 495 ft./West line

At proposed prod. zone
Same as above

14. DISTANCE IN MILES AND DIRECTION FROM NEAREST TOWN OR POST OFFICE*
7 miles Southeast of Bloomfield, N.M.

15. DISTANCE FROM PROPOSED* LOCATION TO NEAREST PROPERTY OR LEASE LINE, FT.
(Also to nearest drlg. unit line, if any) 495 ft.

16. NO. OF ACRES IN LEASE
2284.30

17. NO. OF ACRES ASSIGNED TO THIS WELL
40.00

18. DISTANCE FROM PROPOSED LOCATION* TO NEAREST WELL, DRILLING, COMPLETED, OR APPLIED FOR, ON THIS LEASE, FT.
690 ft.

19. PROPOSED DEPTH
6180'

20. ROTARY OR CABLE TOOL
Rotary

21. ELEVATIONS (Show whether DF, RT, GR, etc.)
5742' GR

DRILLING OPERATIONS AUTHORIZED ARE
SUBJECT TO COMPLIANCE WITH ATTACHED
"GENERAL REQUIREMENTS"

23. PROPOSED CASING AND CEMENTING PROGRAM

22. APPROVAL BY STATE WELL DIV.
February 28, 1983
This action is subject to administrative appeal pursuant to 30 CFR 290.

SIZE OF HOLE	SIZE OF CASING	WEIGHT PER FOOT	SETTING DEPTH	QUANTITY OF CEMENT
13-3/4"	9-5/8"	36.0 K-55	300	250 cu. ft.
8-3/4"	7"	23.0 K-55	5350	1400 cu. ft.
6-1/4"	4-1/2"	10.5 K-55	5150 - 6180	150 cu. ft.

We desire to drill 13-3/4" surface hole to approx. 300 ft. using natural mud as a circulating medium. Run new 9-5/8" csg. to TD. Cement with approx. 250 cu. ft. of Class "B" cement circulated to the surface. Pressure test the casing to approx. 800 PSIG for 10 min. Drill 8-3/4" hole to approx. 5350 ft. using a starch base, permaloid, nondispersed mud as the circulating medium. Log the well. Run new 7" casing to TD with a DV tool at approx. 2000 ft. Cement 1st stage w/approx. 750 cu. ft. of 65/35/6 followed by approx. 100 cu. ft. of Class "B" cement. Cement the second stage w/approx. 450 cu. ft. of 65/35/12 followed by approx. 100 cu. ft. of Class "B". Circ. cement to surface. Drill out the DV tool. Pressure test the pipe to 1500 PSIG for 10 min. Drill out w/6-1/4" bit to approx. 6180 ft. using natural gas as the circulating medium. Log the well. Run new 4-1/2" casing to TD and cement w/approx. 150 cu. ft. of 50/50 Poz mix. WOC. Perforate and fracture the Gallup zone. Clean the well up. Run new 2-3/8" EUE, 4.7#, J-55 tbg. to the Gallup zone. Run rod pump and rods. Set a pumping unit and tanks. Test the well and connect to a gathering system. The gas from this well has previously been dedicated to a transporter.

NOTE: Actual cement volumes will be calculated from caliper log.

IN ABOVE SPACE DESCRIBE PROPOSED PROGRAM: If proposal is to deepen or plug back, give data on present productive zone and proposed new productive zone. If proposal is to drill or deepen directionally, give pertinent data on subsurface locations and measured and true vertical depths. Give blowout preventer program, if any.

24. SIGNED W. K. Cooper TITLE Field Operations Mgr. DATE 3/4/83

(This space for Federal or State office use)

PERMIT NO. _____ APPROVAL DATE _____

APPROVED BY _____ TITLE _____
CONDITIONS OF APPROVAL, IF ANY:

APPROVED
AS AMENDED

FEB 28 1983
JAMES F. SIMS
DISTRICT ENGINEER

NMOCC

All distances must be from the outer boundaries of the Section

Operator UNION TEXAS PETROLEUM CORPORATION		Lease ZACHRY		Well No. 47
Init Letter M	Section 34	Township 29 NORTH	Range 10 WEST	County SAN JUAN

Actual Footage Location of Well:

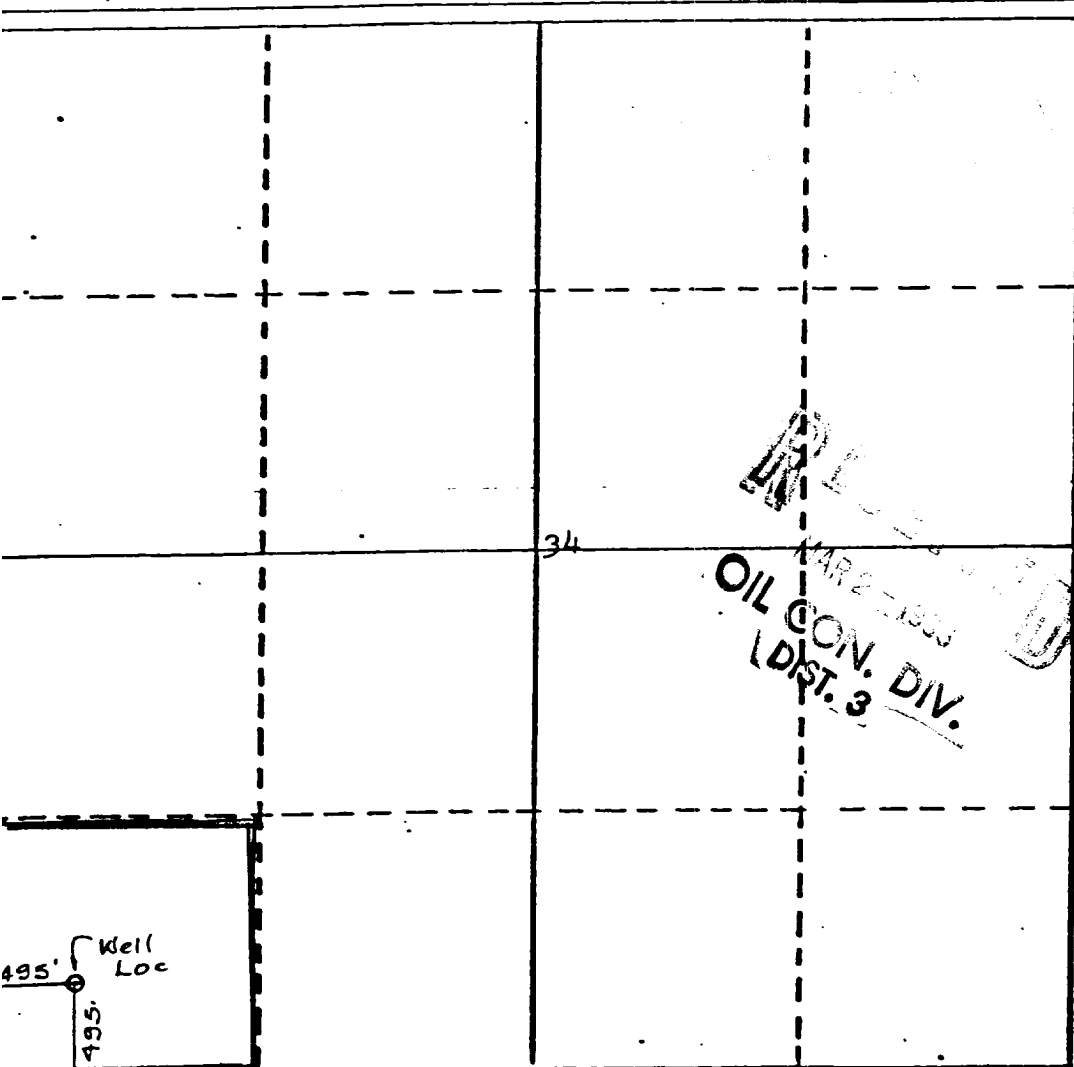
495 feet from the SOUTH line and 495 feet from the WEST line	Ground Level Elev. 5742	Producing Formation Gallup	Pool Wildcat Armenta	Dedicated Acreage SW SW 40.00 Acres
--	-----------------------------------	--------------------------------------	--------------------------------	---

1. Outline the acreage dedicated to the subject well by colored pencil or hatchure marks on the plat below.
2. If more than one lease is dedicated to the well, outline each and identify the ownership thereof (both as to working interest and royalty).
3. If more than one lease of different ownership is dedicated to the well, have the interests of all owners been consolidated by communitization, unitization, force-pooling, etc?

☐ Yes ☒ No If answer is "yes," type of consolidation _____

If answer is "no," list the owners and tract descriptions which have actually been consolidated. (Use reverse side of this form if necessary.) _____

No allowable will be assigned to the well until all interests have been consolidated (by communitization, unitization, forced-pooling, or otherwise) or until a non-standard unit, eliminating such interests, has been approved by the Division



CERTIFICATION

I hereby certify that the information contained herein is true and complete to the best of my knowledge and belief.

Rudy D. Motto
Name

Rudy D. Motto
Position

Field Operations Manager
Company

Union Texas Petroleum
Date

11-22-82

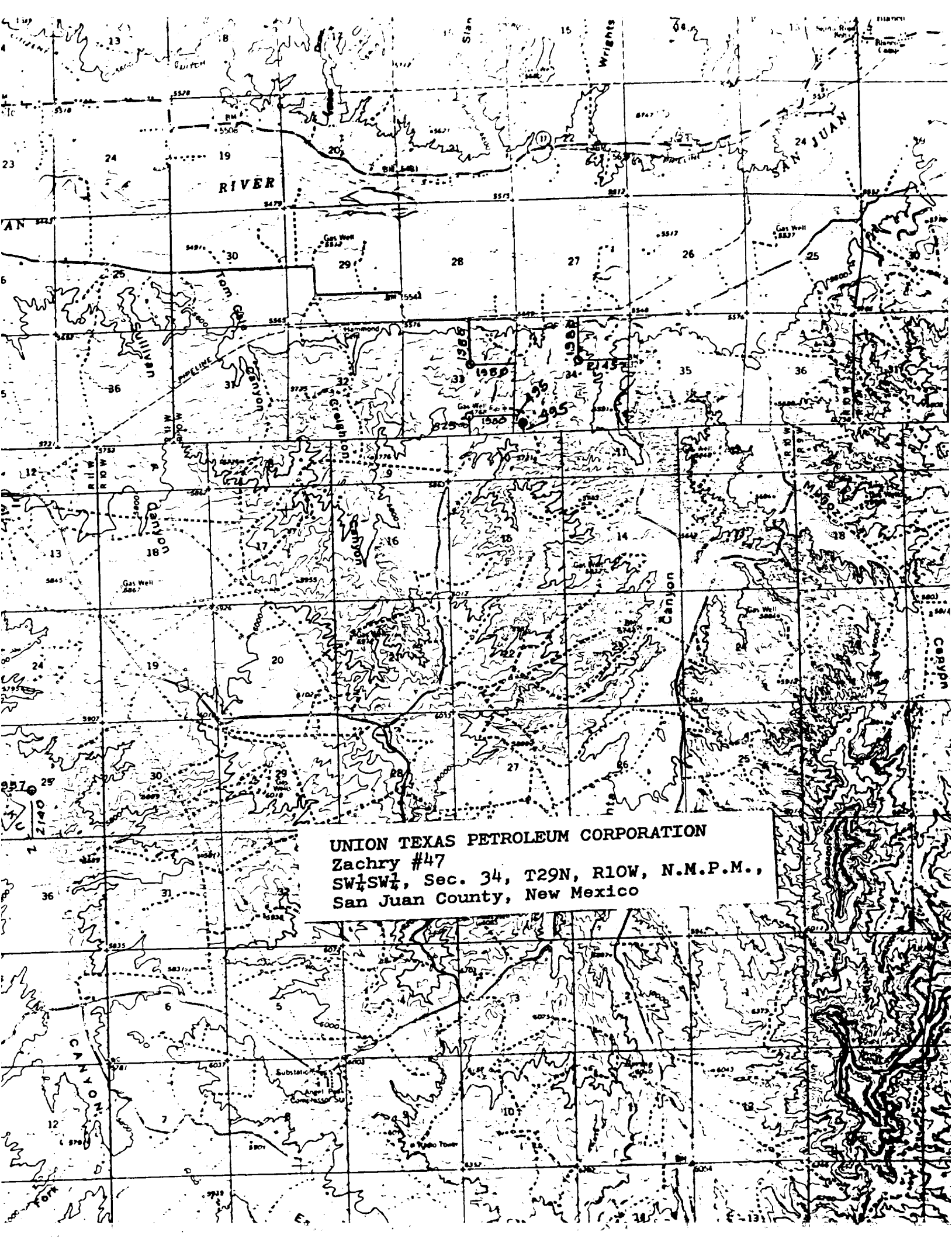
I hereby certify that the well location shown on this plat was plotted from field notes of actual surveys made by me or under my supervision, and that the same is true and correct to the best of my knowledge and belief.

Michael Daly
Date Surveyed
November 12, 1982

Registered Professional Engineer and/or Land Surveyor

Michael Daly
Certificate No.

5992



UNION TEXAS PETROLEUM CORPORATION
Zachry #47
SW $\frac{1}{4}$ SW $\frac{1}{4}$, Sec. 34, T29N, R10W, N.M.P.M.,
San Juan County, New Mexico