

UNITED STATES
DEPARTMENT OF THE INTERIOR
GEOLOGICAL SURVEY

1983

30-045-25798

APPLICATION FOR PERMIT TO DRILL, DEEPEN, OR PLUG BACK

1a. TYPE OF WORK
DRILL ☒ DEEPEN ☐ PLUG BACK ☐

b. TYPE OF WELL
OIL WELL ☒ GAS WELL ☐ OTHER ☐
SINGLE ZONE ☒ MULTIPLE ZONE ☐

2. NAME OF OPERATOR
Union Texas Petroleum Corporation

3. ADDRESS OF OPERATOR
P. O. Box 808, Farmington, New Mexico 87499

4. LOCATION OF WELL (Report location clearly and in accordance with any State requirements)
At surface 916 ft./South and 911 ft./West lines

At proposed prod. zone
Same as above

14. DISTANCE IN MILES AND DIRECTION FROM NEAREST TOWN OR POST OFFICE*
7 miles East of Bloomfield, New Mexico

15. DISTANCE FROM PROPOSED* LOCATION TO NEAREST PROPERTY OR LEASE LINE, FT. (Also to nearest drlg. unit line, if any)
404 ft. 404 ft.

18. DISTANCE FROM PROPOSED LOCATION* TO NEAREST WELL, DRILLING, COMPLETED, OR APPLIED FOR, ON THIS LEASE, FT.
1706 ft.

21. ELEVATIONS (Show whether DF, RT, GR, etc.)
5587 GR

23. PROPOSED CASING AND CEMENTING PROGRAM

SIZE OF HOLE	SIZE OF CASING	WEIGHT PER FOOT	SETTING DEPTH	QUANTITY OF CEMENT
13-3/4"	9-5/8"	36.0# K-55	300'	250 cu. ft. (circulated)
8-3/4"	7"	26.0# K-55	5400'	1400 cu. ft. (circulated)
6-1/4"	4-1/2"	11.6# K-55	5200'-6086'	150 cu. ft. (top of liner)

We desire to drill 13-3/4" surface hole to approx. 300 ft using natural mud as a circulating medium. Run new 9-5/8" casing to TD. Cement with approx 250 cu ft of Class "B" cement circulated to the surface. Pressure test the casing to approx 800 PSIG for 10 minutes. Drill 8-3/4" hole to approx 5400 ft using a starch base, permaloid, nondispersed mud as the circulating medium. Log the well. Run new 7" casing to TD with a DV tool at approx 2000 ft. Cement 1st stage with approx 750 cu ft of 65/35/6 followed by approx 100 cu ft Class "B" cement. Cement the second stage with approx 450 cu ft 65/35/12 followed by approx 100 cu ft Class "B". Circulate cement to surface. Drill out the DV tool. Pressure test the pipe to 1500 PSIG for 10 minutes. Drill out with 6-1/4" bit to approx 6086 ft using natural gas as the circulating medium. Log the well. Run new 4-1/2" casing to TD and cement with approx 150 cu ft of 50/50 Poz mix. WOC. Perforate and fracture the Gallup zone. Clean the well up. Run new 2-3/8" EUE, 4.7#, J-55 tubing to the Gallup zone. Run rod pump and rods. Set a pumping unit and tanks. Test the well and connect to a gathering system. The gas from this well has previously been dedicated to a transporter.

NOTE: Actual cement volumes will be calculated from caliper log.

IN ABOVE SPACE DESCRIBE PROPOSED PROGRAM: If proposal is to deepen or plug back, give data on present productive zone and proposed new productive zone. If proposal is to drill or deepen directionally, give pertinent data on subsurface locations and measured and true vertical depths. Give blowout preventer program, if any.

24. SIGNED W. K. Cooper TITLE Field Operations Manager

(This space for Federal or State office use)

PERMIT NO. _____ APPROVAL DATE _____

APPROVED BY _____ TITLE _____

CONDITIONS OF APPROVAL, IF ANY:

LS

NMOCC

5. LEASE DESIGNATION AND SERIAL NO.
SF 081078

6. IF INDIAN, ALLOTTEE OR TRIBE NAME

7. UNIT AGREEMENT NAME

8. FARM OR LEASE NAME

Albright

9. WELL NO.

15

10. FIELD AND POOL, OR WILDCAT

Armenta Undesignated Gallup ext

11. SEC., T., R., M., OR BLK. AND SURVEY OR AREA
Sec. 23, T-29N, R-10W, N.M.P.M.

12. COUNTY OR PARISH 13. STATE
San Juan New Mexico

17. NO. OF ACRES ASSIGNED TO THIS WELL

40.00

20. ROTARY OR CABLE TOOLS

Rotary

22. APPROX. DATE WORK WILL START*

July 1, 1983

This action is subject to administrative appeal pursuant to 30 CFR 290.

DATE May 27, 1983
APPROVED
AS AMEN
DATE AUG 29 1983
[Signature]
AREA MANAGER
FARMINGTON RESOURCE AREA

All distances must be from the outer boundaries of the Section.

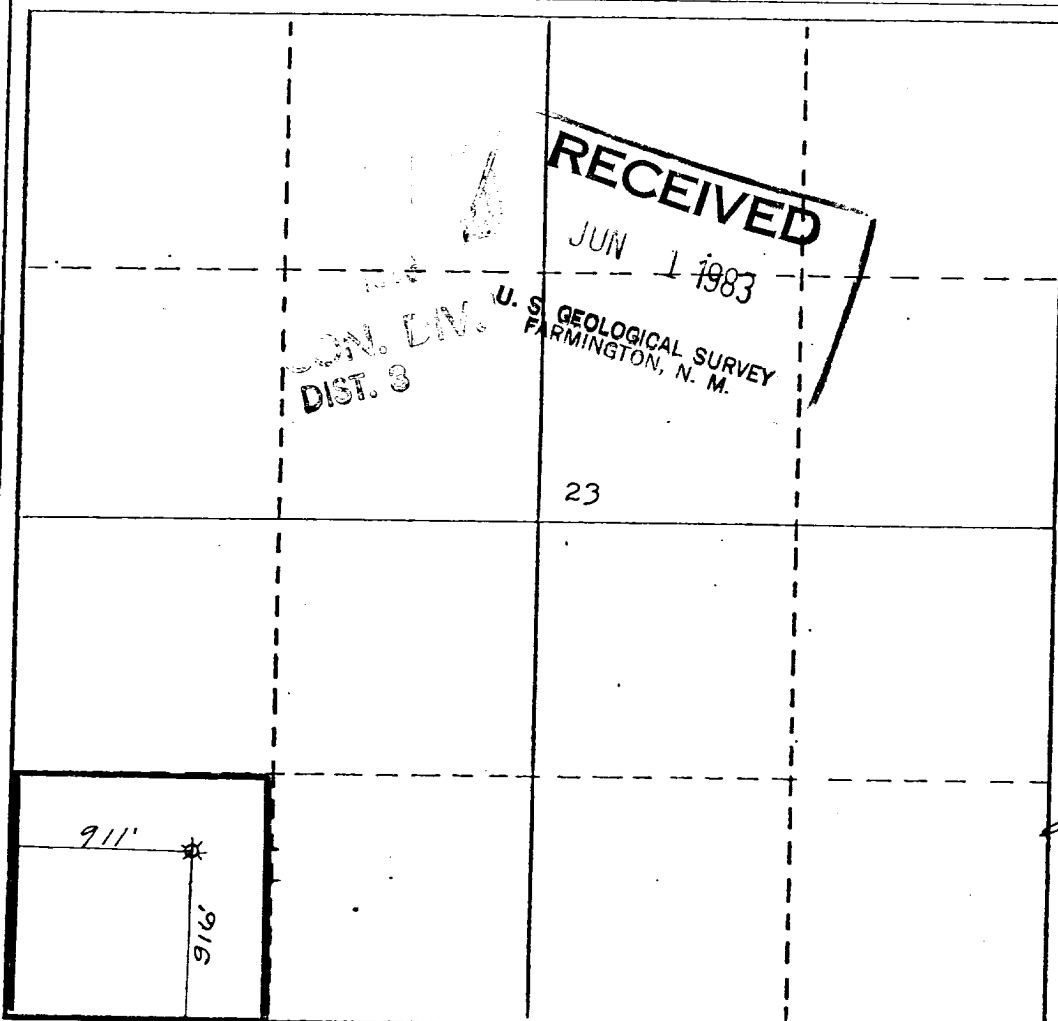
Operator UNION TEXAS PETROLEUM CORPORATION			Lease ALBRIGHT		Well No. 15
Unit Letter M	Section 23	Township 29 NORTH	Range 10 WEST	County SAN JUAN	
Actual Footage Location of Well: 916 feet from the SOUTH line and 911 feet from the WEST line					
Ground Level Elev. 5587	Producing Formation GALLUP		Pool UNDESIGNATED		Dedicated Acreage: SW SW 40.00 Acres

1. Outline the acreage dedicated to the subject well by colored pencil or hachure marks on the plat below.
2. If more than one lease is dedicated to the well, outline each and identify the ownership thereof (both as to working interest and royalty).
3. If more than one lease of different ownership is dedicated to the well, have the interests of all owners been consolidated by communitization, unitization, force-pooling, etc?

☐ Yes ☐ No If answer is "yes," type of consolidation _____

If answer is "no," list the owners and tract descriptions which have actually been consolidated. (Use reverse side of this form if necessary.) _____

No allowable will be assigned to the well until all interests have been consolidated (by communitization, unitization, forced-pooling, or otherwise) or until a non-standard unit, eliminating such interests, has been approved by the Division



CERTIFICATION

I hereby certify that the information contained herein is true and complete to the best of my knowledge and belief.

Rudy D. Motto
Name

Rudy D. Motto
Position

Area Operations Manager

Company
Union Texas Petroleum Corp.

Date
April 14, 1983

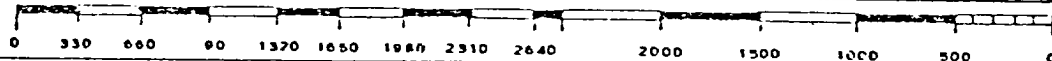
I hereby certify that the well location shown on this plat was plotted from field notes of actual surveys made by me or under my supervision, and that the same is true and correct to the best of my knowledge and belief.

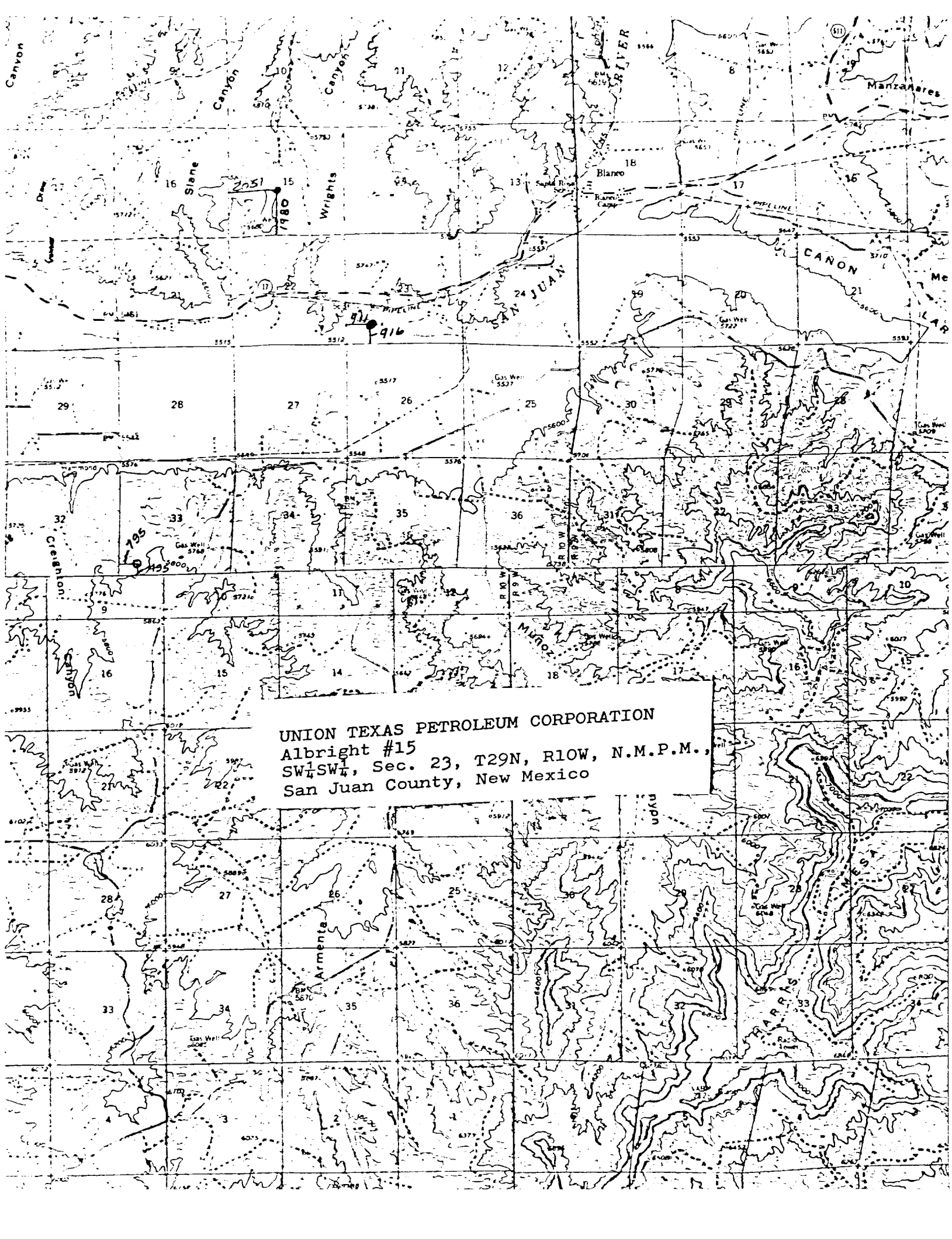
Date Surveyed
February 10, 1983

Registered Professional Engineer and/or Land Surveyor

Michael Daly

Certificate No.
5992





UNION TEXAS PETROLEUM CORPORATION
Albright #15
SW $\frac{1}{4}$ SW $\frac{1}{4}$, Sec. 23, T29N, R10W, N.M.P.M.,
San Juan County, New Mexico