



STATE OF NEW MEXICO
ENERGY AND MINERALS DEPARTMENT
OIL CONSERVATION DIVISION

May 15, 1984

TONY ANAYA
GOVERNOR

POST OFFICE BOX 2088
STATE LAND OFFICE BUILDING
SANTA FE, NEW MEXICO 87501
(505) 827-5800

Dugan Production Corp.
P. O. Box 208
Farmington, New Mexico 87499

Attention: Sherman E. Dugan

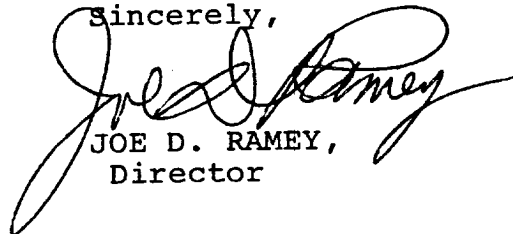
Administrative Order NSL-1820

Gentlemen:

Reference is made to your application on behalf of Pioneer Production Corporation for a non-standard location for their Maxey Gas Com "C" Well No. 1 to be located 1700 feet from the North line and 670 feet from the East line of Section 24, Township 29 North, Range 12 West, NMPM, a Chacra Test well, San Juan County, New Mexico.

By authority granted me under the provisions of Rule 104 F I, the above-described unorthodox location is hereby approved.

Sincerely,



JOE D. RAMEY,
Director

JDR/RLS/dr

cc: Oil Conservation Division - Aztec
Oil & Gas Engineering Committee - Hobbs
Bureau of Land Management - Farmington

RECEIVED

MAY 16 1984

OIL CON. DIV.
DIST. 3



STATE OF NEW MEXICO
ENERGY AND MINERALS DEPARTMENT

OIL CONSERVATION DIVISION
AZTEC DISTRICT OFFICE

1000 RIO BRAZOS ROAD
AZTEC, NEW MEXICO 87410
(505) 334-6178

OIL CONSERVATION DIVISION
BOX 2088
SANTA FE, NEW MEXICO 87501

DATE 4-5-84

RE: Proposed MC _____
Proposed DHC _____
Proposed NSL X _____
Proposed SWD _____
Proposed WFX _____
Proposed PMX _____

Gentlemen:

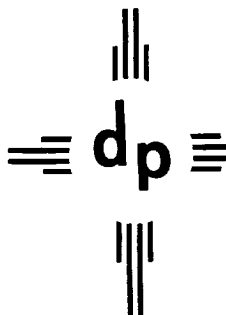
I have examined the application dated 4-15-84
for the Pioneer Production Co. Maxey Gas Com "C" #1 H-24-29N-12W
Operator Lease and Well No. Unit, S-T-R

and my recommendations are as follows:

approve

Yours truly,

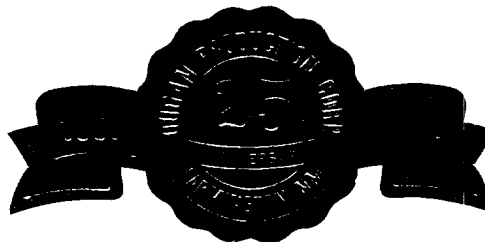
Eus Busch



dugan production corp.

March 15, 1984

Frank Chavez
New Mexico Oil Conservation Division
1000 Rio Brazos Rd.
Aztec, NM 87410



RE: Application for Administrative Approval of
Unorthodox Location for Pioneer Production Corp.
Maxey Gas Com "C" #1, 1700' FNL & 670' FEL, Sec. 24, T29N, R12W, NMPM
San Juan County, NM - Chacra Test

Dear Mr. Chavez:

We hereby request approval of an unorthodox location for the subject well.
Copies of the well location plat, topographic map, and a production map
showing offsetting operators are attached for your reference.

The unorthodox location is necessary due to topographic conditions.

A copy of this application is being submitted to all offsetting operators by
certified mail with a request that they furnish your office with a waiver of
objection.

We request your approval of this location under the provisions of NMOCD Rule
104-F.

Sincerely,

Sherman E. Dugan
Agent

fp
cc: BLM, Farmington
Southland Royalty Co., Denver
Pioneer Production Corp.

RECEIVED

MAR 19 1984

OIL CON. DIV.
DIST. 3

WAIVER

Southland Royalty Co. hereby waives objection to the above application for
unorthodox location.

DATE

BY:

All distances must be from the outer boundaries of the Section.

Operator Pioneer Production Corporation		Lease Maxey Gas Com C		Well No. 1
Unit Letter H	Section 24	Township 29 North	Range 12 West	County San Juan
Actual Footage Location of Well: 1700 feet from the North line and 670 feet from the East line				
Ground Level Elev. 5682	Producing Formation Chacra	Pool Otero Chacra	Dedicated Acreage: 160 Acres	

1. Outline the acreage dedicated to the subject well by colored pencil or hachure marks on the plat below.

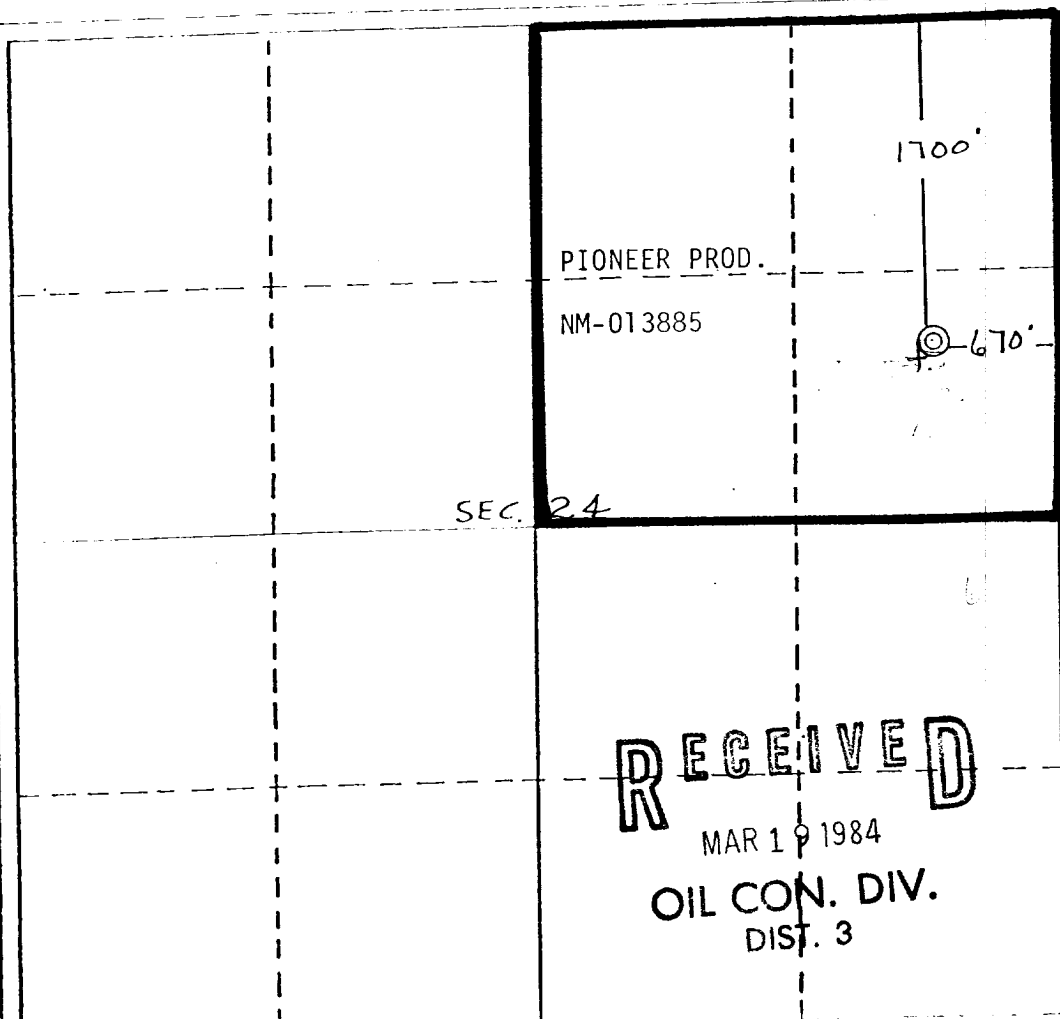
2. If more than one lease is dedicated to the well, outline each and identify the ownership thereof (both as to working interest and royalty).

3. If more than one lease of different ownership is dedicated to the well, have the interests of all owners been consolidated by communitization, unitization, force-pooling, etc?

☐ Yes ☐ No If answer is "yes," type of consolidation _____

If answer is "no," list the owners and tract descriptions which have actually been consolidated. (Use reverse side of this form if necessary.) _____

No allowable will be assigned to the well until all interests have been consolidated (by communitization, unitization, forced-pooling, or otherwise) or until a non-standard unit, eliminating such interests, has been approved by the Division.



CERTIFICATION

I hereby certify that the information contained herein is true and complete to the best of my knowledge and belief.

Sherman E. Dugan

Name

Sherman E. Dugan

Position

Geologist

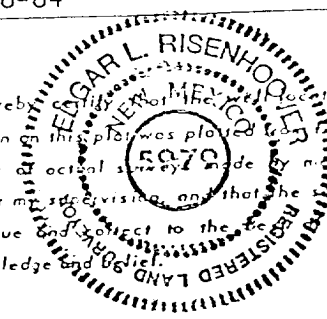
Company

Dugan Production Corp.

Date

3-8-84

I hereby certify that the location shown on this plat was plotted from field notes of actual survey made by me or under my supervision, and that the same is true and correct to the best of my knowledge and belief.



Date Surveyed

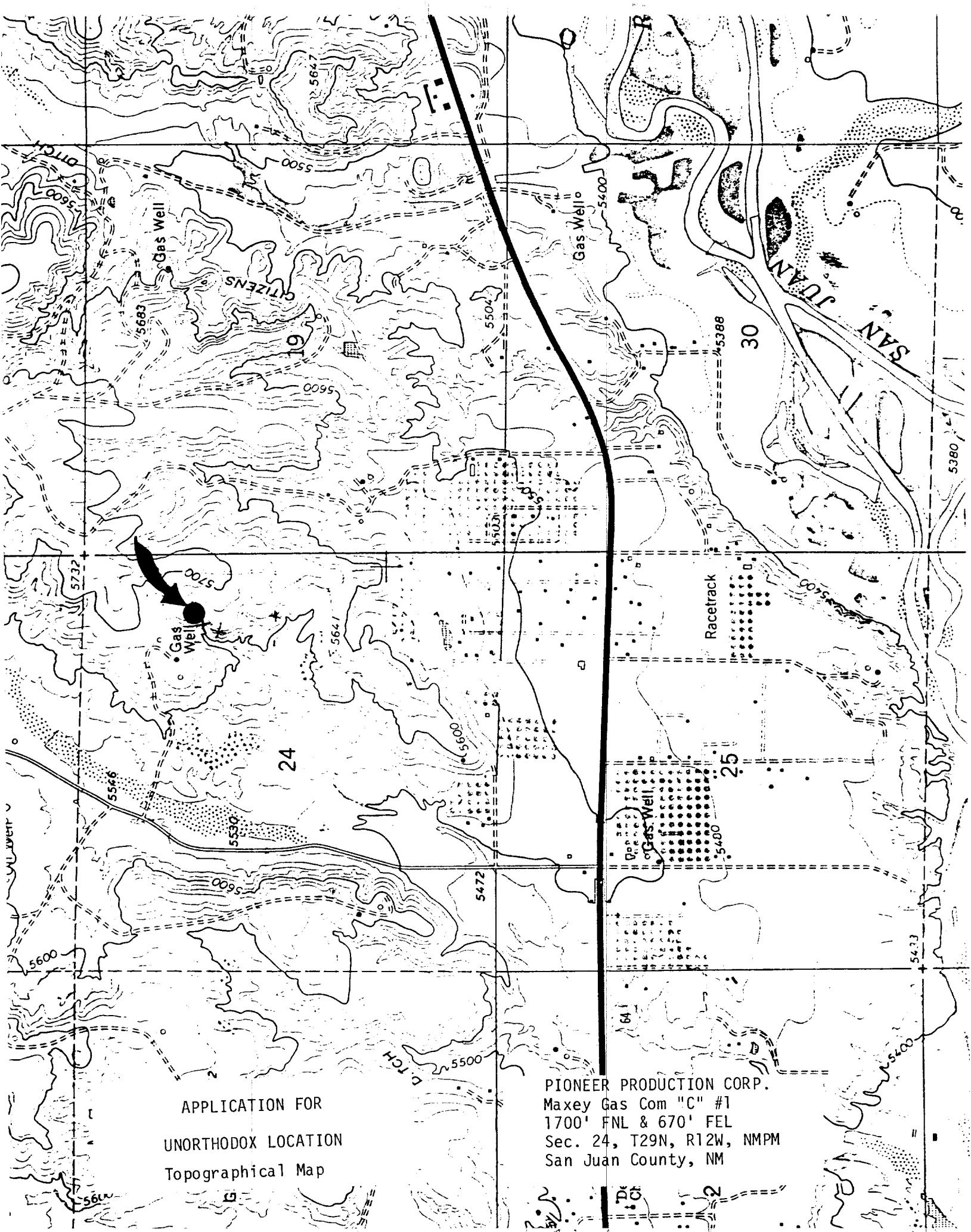
February 24, 1984

Registered Professional Engineer and/or Land Surveyor

Edgar L. Risenhoover

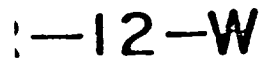
Certificate No. 5979

Edgar L. Risenhoover, L.S.



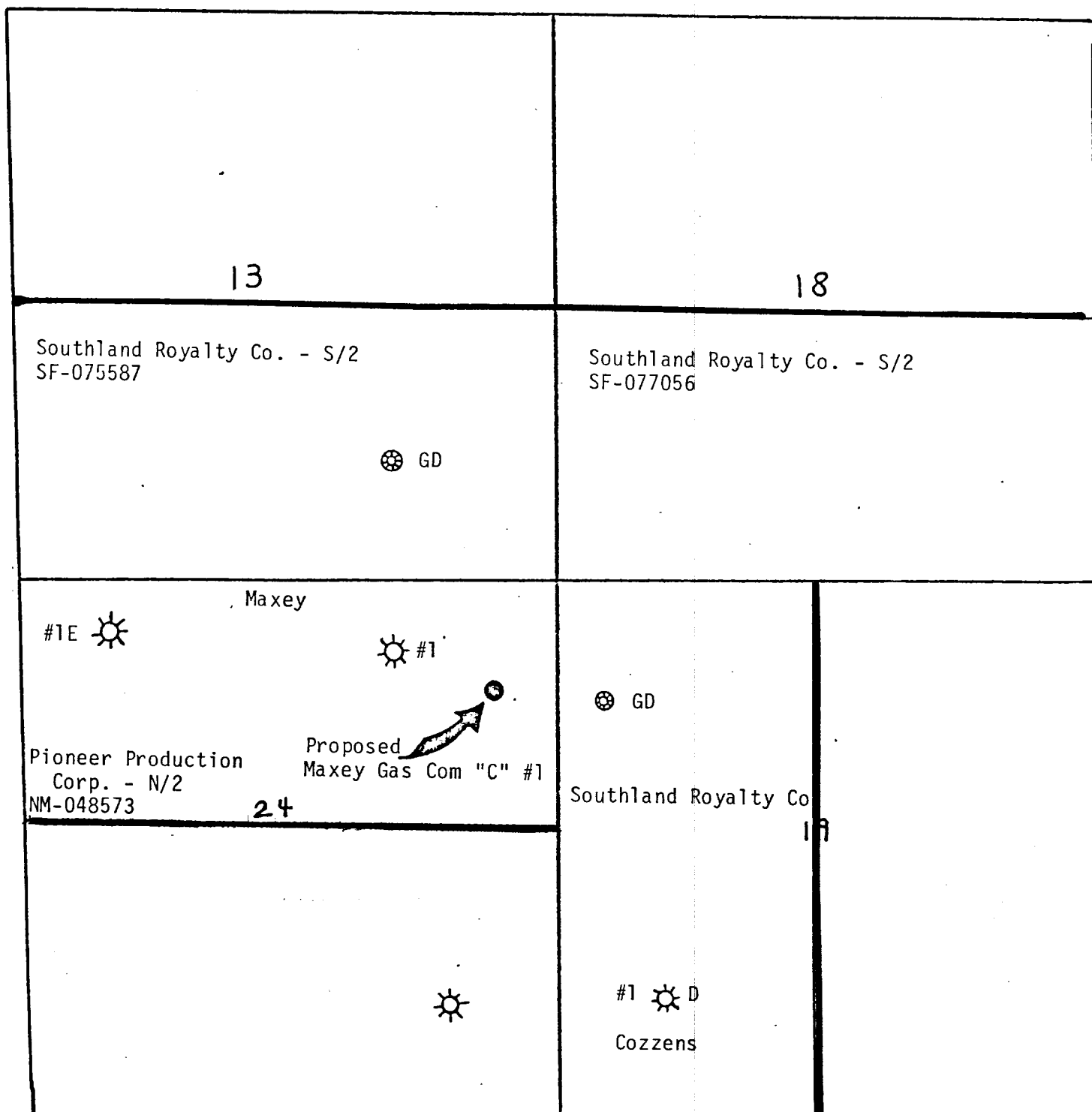
APPLICATION FOR
UNORTHODOX LOCATION
Topographical Map

PIONEER PRODUCTION CORP.
Maxey Gas Com "C" #1
1700' FNL & 670' FEL
Sec. 24, T29N, R12W, NMPM
San Juan County, NM



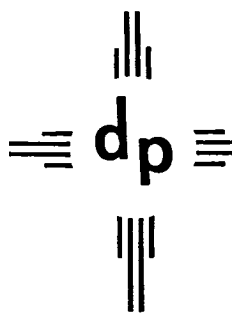
PIONEER PRODUCTION CORP.
Maxey Gas Com "C" #1
1700' FNL & 670' FEL
Sec. 24, T29N, R12W, NMPM
San Juan County, NM

R-1



APPLICATION FOR
UNORTHODOX LOCATION
OFFSETTING OPERATORS

PIONEER PRODUCTION CORP.
Maxey Gas Com "C" #1
1700' FNL & 670' FEL
Sec. 24, T29N, R12W, NMPM
San Juan County, NM



dugan production corp.

March 15, 1984

Frank Chavez
New Mexico Oil Conservation Division
1000 Rio Brazos Rd.
Aztec, NM 87410

RE: Application for Administrative Approval of
Unorthodox Location for Pioneer Production Corp.
Maxey Gas Com "C" #1, 1700' FNL & 670' FEL, Sec. 24, T29N, R12W, NMPM
San Juan County, NM - Chacra Test

Dear Mr. Chavez:

We hereby request approval of an unorthodox location for the subject well.
Copies of the well location plat, topographic map, and a production map
showing offsetting operators are attached for your reference.

The unorthodox location is necessary due to topographic conditions.

A copy of this application is being submitted to all offsetting operators by
certified mail with a request that they furnish your office with a waiver of
objection.

We request your approval of this location under the provisions of NMOCD Rule
104-F.

Sincerely,

Sherman E. Dugan
Agent

fp

cc: BLM, Farmington
Southland Royalty Co., Denver
Pioneer Production Corp.

RECEIVED

MAR 19 1984

OIL CON. DIV.
DIST. 3

WAIVER

Southland Royalty Co. hereby waives objection to the above application for
unorthodox location.

DATE

BY:

OIL CONSERVATION DIVISION

STATE OF NEW MEXICO
ENERGY AND MINERALS DEPARTMENT

P. O. BOX 2088

SANTA FE, NEW MEXICO 87501

Form C-102
Revised 10-1-78

All distances must be from the outer boundaries of the Section.

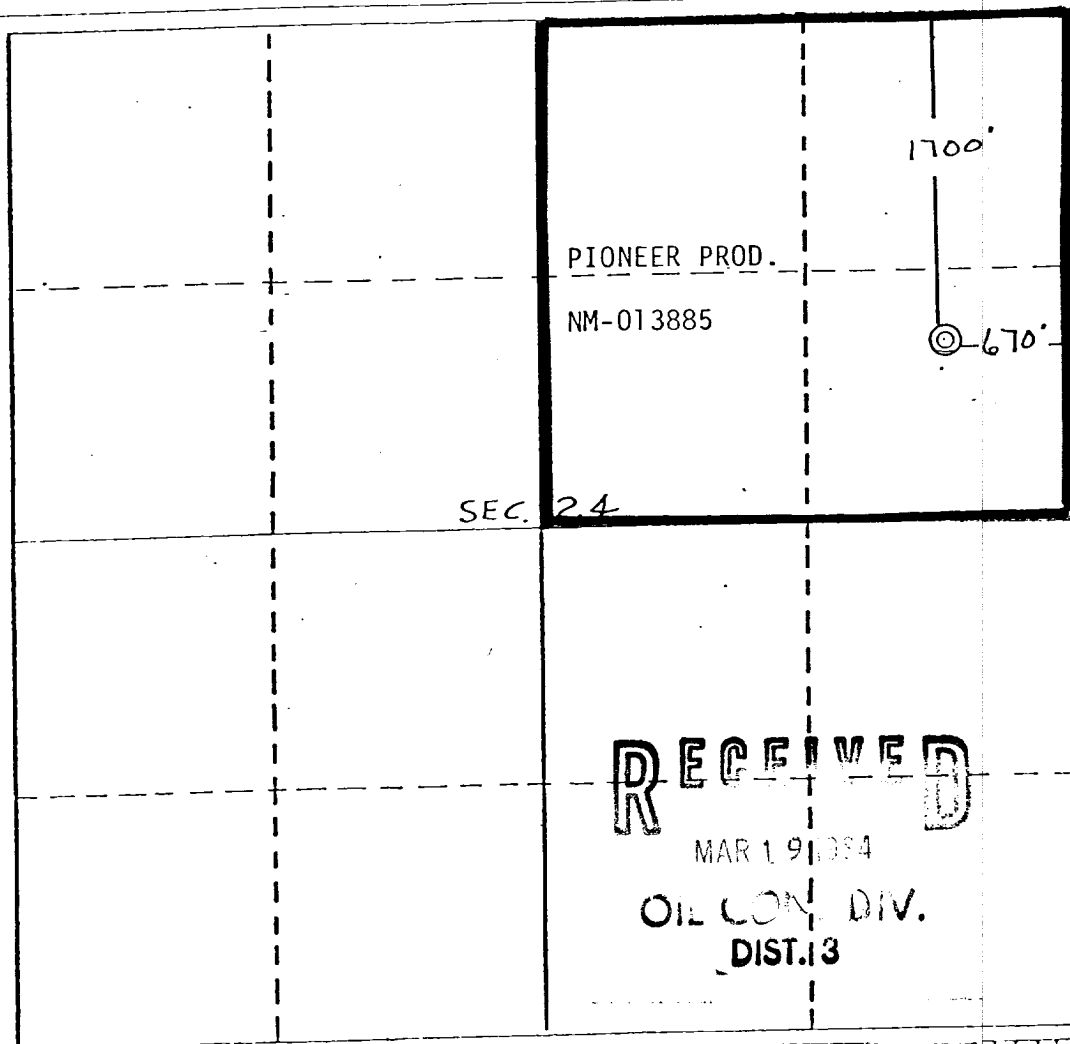
Operator Pioneer Production Corporation		Lease Maxey Gas Com C		Well No. 1
Unit Letter H	Section 24	Township 29 North	Range 12 West	County San Juan
Actual Footage Location of Well: 1700 feet from the North line and 670 feet from the East line				
Ground Level Elev. 5682	Producing Formation Chacra	Pool Otero Chacra	Dedicated Acreage: 160 Acres	

1. Outline the acreage dedicated to the subject well by colored pencil or hatchure marks on the plat below.
2. If more than one lease is dedicated to the well, outline each and identify the ownership thereof (both as to working interest and royalty).
3. If more than one lease of different ownership is dedicated to the well, have the interests of all owners been consolidated by communitization, unitization, force-pooling, etc?

☐ Yes ☐ No If answer is "yes," type of consolidation _____

If answer is "no," list the owners and tract descriptions which have actually been consolidated. (Use reverse side of this form if necessary.) _____

No allowable will be assigned to the well until all interests have been consolidated (by communitization, unitization, forced-pooling, or otherwise) or until a non-standard unit, eliminating such interests, has been approved by the Division.



CERTIFICATION

I hereby certify that the information contained herein is true and complete to the best of my knowledge and belief.

Sherman E. Dugan

Name

Sherman E. Dugan

Position

Geologist

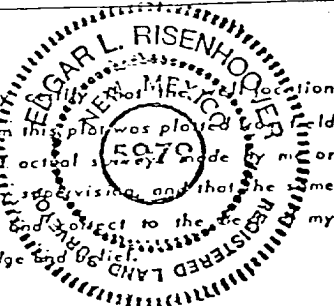
Company

Dugan Production Corp.

Date

3-8-84

I hereby certify that the information shown on this plat was prepared and notes and actual survey made by me or under my supervision, and that the same is true and correct to the best of my knowledge and belief.



Date Surveyed

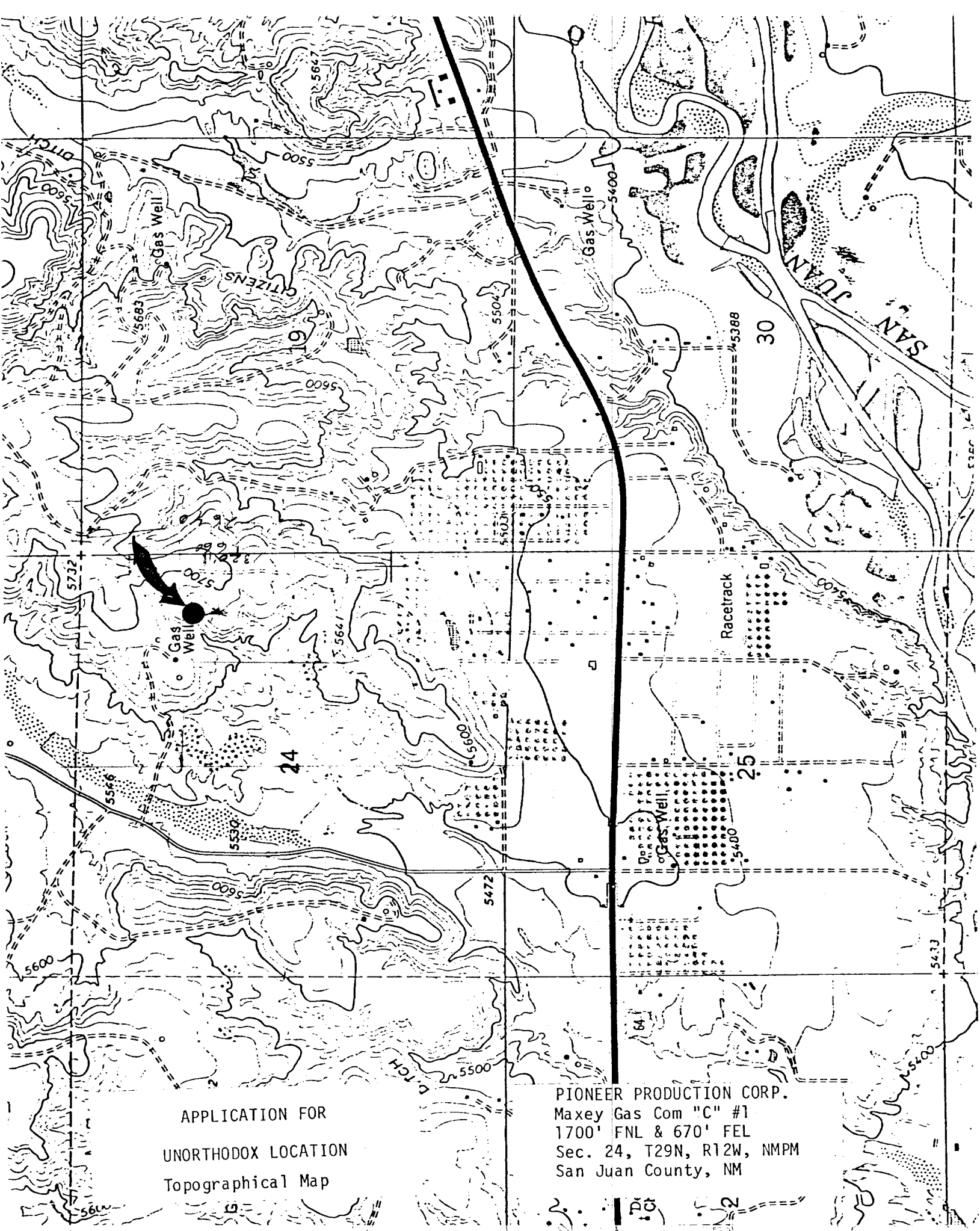
February 24, 1984

Registered Professional Engineer and/or Land Surveyor

Edgar L. Risenhoover








Certificate No. 5979

Edgar L. Risenhoover, I.S.



APPLICATION FOR
UNORTHODOX LOCATION
Topographical Map

PIONEER PRODUCTION CORP.
Maxey Gas Com "C" #1
1700' FNL & 670' FEL
Sec. 24, T29N, R12W, NMPM
San Juan County, NM

13	18
Southland Royalty Co. - S/2 SF-075587  GD	Southland Royalty Co. - S/2 SF-077056
<div> <div>#1E </div> <div>Maxey</div> <div>#1 </div> <div>  </div> <div> Pioneer Production Corp. - N/2 NM-048573 </div> <div> Proposed Maxey Gas Com "C" #1 </div> <div>24</div> </div>	<div>  GD </div> <div> Southland Royalty Co. 19 </div> <div> #1  D Cozzens </div>
	

APPLICATION FOR
UNORTHODOX LOCATION
OFFSETTING OPERATORS

PIONEER PRODUCTION CORP.
Maxey Gas Com "C" #1
1700' FNL & 670' FEL
Sec. 24, T29N, R12W, NMPM
San Juan County, NM