

UNITED STATES
DEPARTMENT OF THE INTERIOR
BUREAU OF LAND MANAGEMENT

APPLICATION FOR PERMIT TO DRILL, DEEPEN, OR PLUG BACK

1a. TYPE OF WORK DRILL ☒ DEEPEN ☐ PLUG BACK ☐

b. TYPE OF WELL
OIL WELL ☐ GAS WELL ☒ OTHER ☐ SINGLE ZONE ☒ MULTIPLE ZONE ☐

2. NAME OF OPERATOR
Union Texas Petroleum

3. ADDRESS OF OPERATOR
375 U.S. HWY 64, Farmington, N.M. 87401

4. LOCATION OF WELL (Report location clearly and in accordance with any State requirements.)
At surface 305' FSL & 1572' FEL
At proposed prod. zone Same
RECEIVED
APR 03 1986

14. DISTANCE IN MILES AND DIRECTION FROM NEAREST TOWN OR POST OFFICE
1 mile South of Bloomfield, New Mexico
BUREAU OF LAND MANAGEMENT
FARMINGTON RESOURCE AREA

15. DISTANCE FROM PROPOSED*
LOCATION TO NEAREST
PROPERTY OR LEASE LINE, FT.
(Also to nearest drlg. unit line, if any)
305'
305'

16. NO. OF ACRES IN LEASE
1088.2

17. NO. OF ACRES ASSIGNED
TO THIS WELL
SE/4 157.72

18. DISTANCE FROM PROPOSED LOCATION*
TO NEAREST WELL, DRILLING, COMPLETED,
OR APPLIED FOR, ON THIS LEASE, FT.
120'

19. PROPOSED DEPTH
1500

20. ROTARY OR CABLE TOOLS
Rotary

21. ELEVATIONS (Show whether DF, RT, GR, etc.)
5524' GR (Ungraded)
DRILLING OPERATIONS AUTHORIZED ARE
SUBJECT TO COMPLIANCE WITH ATTACHED

22. APPROX. DATE WORK WILL START*
April 20, 1986

23. "GENERAL REQUIREMENTS" DRILLING AND CEMENTING PROGRAM This action is subject to technical and procedural review pursuant to 43 CFR 3165.4 and appeal pursuant to 43 CFR 3165.4

SIZE OF HOLE	SIZE OF CASING	WEIGHT PER FOOT	SETTING DEPTH
9-7/8"	7-5/8" K55	26.40#	(+) 200'
6-3/4"	2-3/8" J55	6.50#	(-) 1500'

88 cuft. C1 B 2% CaCl2
See below

We desire to drill this well as a slimhole well in an unorthodox location as shown above. After the production casing is run, it will be cemented as follows: Proceed with 20 BBLs of mud flush followed by approx. 450 cuft. 50/50 Poz with 2% Gel and 3675# Gilsonite, followed by 103 cuft. of C1 B cement with 2% Gel to circulate to the surface.

After W.O.C. and clean out, the casing will be tested, perforated and fractured to stimulate production. Clean out well after stimulation, nipple down wellhead for tubingless completion, test well, and connect to a gathering system.

This well is in an unorthodox location due to the Fruitland zone being a channel sand and must be completed when it is present disregarding footage requirements.

This APD is a resubmittal following the expiration of the previous approved APD dated July 13, 1984, which was extended to March 28, 1986, now expired.

IN ABOVE SPACE DESCRIBE PROPOSED PROGRAM: If proposal is to deepen or plug back, give data on present productive zone and proposed new productive zone. If proposal is to drill or deepen directionally, give pertinent data on subsurface locations and measured and true vertical depths. Give blowout preventer program, if any.

24. SIGNED *L. R. La Follette* TITLE Regulatory Analyst DATE April 2, 1986

(This space for Federal or State office use)

PERMIT NO.

APPROVAL DATE APR 10 1986

APPROVED BY
CONDITIONS OF APPROVAL, IF ANY:

TITLE OIL CON. DIV. 1

DATE

NMOC

DIST. 3

*See Instructions On Reverse Side

...to any department or agency of the

**NEW MEXICO OIL CONSERVATION COMMISSION
WELL LOCATION AND ACREAGE DEDICATION PLAT**

Form C-102
Supersedes C-12
Effective 1-1-65

All distances must be from the outer boundaries of the Section.

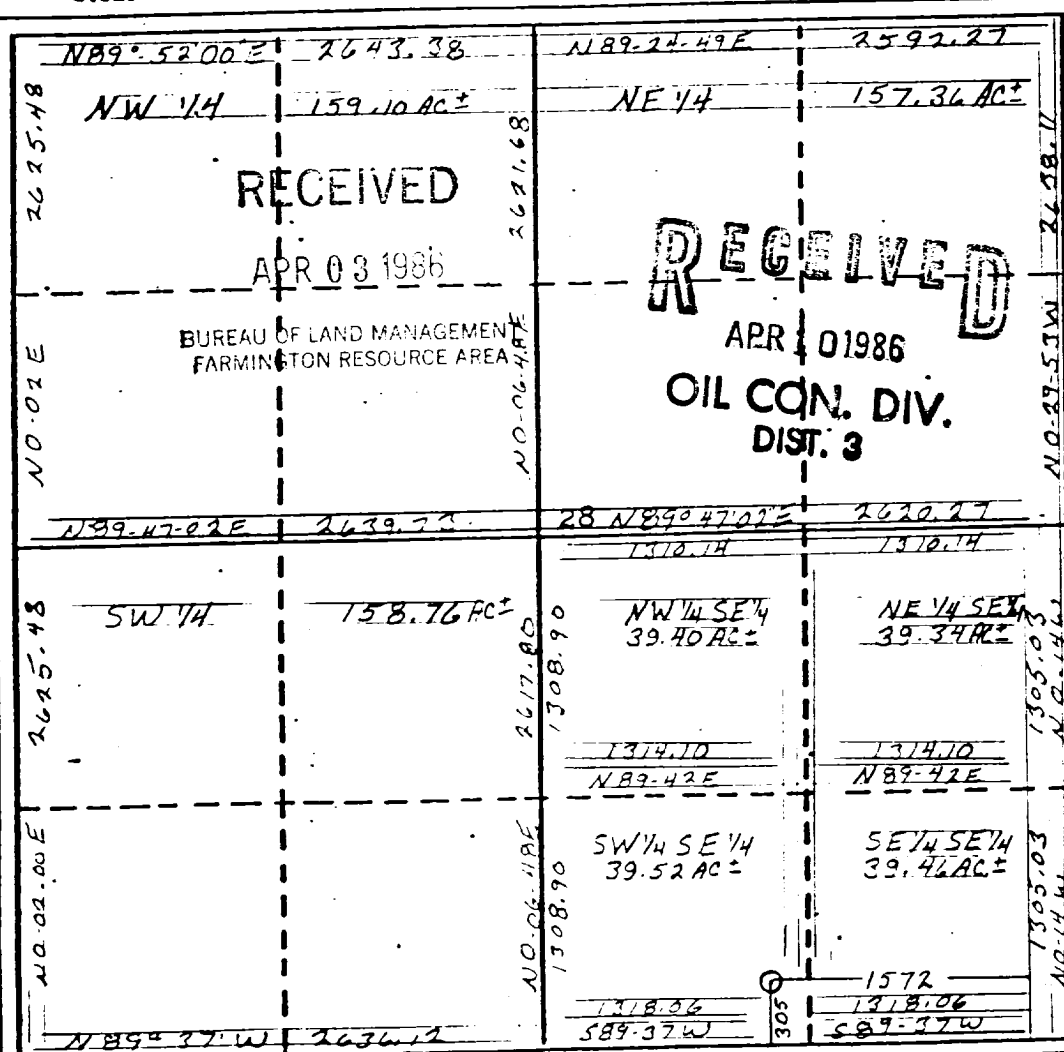
Operator UNION TEXAS PETROLEUM CORPORATION			Lease MANGUM		Well No. 9
Unit Letter 0	Section 28	Township 29 NORTH	Range 11 WEST	County SAN JUAN	
Actual Footage Location of Wells 305 feet from the SOUTH line and 1572 feet from the EAST line					
Ground Level Elev. 5524	Producing Formation Fruitland		Pool Aztec <i>EXT</i>		Dedicated Acreage SE/4 157.72/60 Acres

1. Outline the acreage dedicated to the subject well by colored pencil or hatchure marks on the plat below.
2. If more than one lease is dedicated to the well, outline each and identify the ownership thereof (both as to working interest and royalty).
3. If more than one lease of different ownership is dedicated to the well, have the interests of all owners been consolidated by communitization, unitization, force-pooling, etc?

☒ Yes ☐ No If answer is "yes," type of consolidation To be communitized

If answer is "no," list the owners and tract descriptions which have actually been consolidated. (Use reverse side of this form if necessary.)

No allowable will be assigned to the well until all interests have been consolidated (by communitization, unitization, forced-pooling, or otherwise) or until a non-standard unit, eliminating such interests, has been approved by the Commission.



CERTIFICATION

I hereby certify that the information contained herein is true and complete to the best of my knowledge and belief.

L. R. La Follette

Name
L.R. La Follette

Position
Regulatory Analyst

Company
Union Texas Petroleum

Date
April 2, 1986

I hereby certify that the well location shown on this plat was plotted from field notes of surveys made by me or under my supervision and that the same are correct to the best of my knowledge and belief.

Michael Daly

Date Surveyed
June 15, 1984

Registered Professional Engineer and/or Land Surveyor

Michael Daly

Certificate No.

5992

MANGUM LEASE # 1088.20
SEC. 28, T29N, R11W, N.M.P.M.
SAN JUAN COUNTY, NEW MEXICO

MANGUM # 9

305' FSL & 1572' FEL

