

UNITED STATES
DEPARTMENT OF THE INTERIOR
GEOLOGICAL SURVEY

30-045-26418

APPLICATION FOR PERMIT TO DRILL, DEEPEN, OR PLUG BACK

1a. TYPE OF WORK
DRILL ☒ DEEPEN ☐ PLUG BACK ☐

b. TYPE OF WELL
OIL WELL ☐ GAS WELL ☒ OTHER ☐ SINGLE ZONE ☒ MULTIPLE ZONE ☐

2. NAME OF OPERATOR
Energy Reserves Group, Inc.

3. ADDRESS OF OPERATOR
P. O. Box 3280; Casper, WY 82602

4. LOCATION OF WELL (Report location clearly and in accordance with any State requirements.)
At surface

At proposed prod. zone
1,490' FSL 880' FEL NE/SE

14. DISTANCE IN MILES AND DIRECTION FROM NEAREST TOWN OR POST OFFICE*
Approximately 8 1/2 miles Southeast of Farmington, New Mexico

15. DISTANCE FROM PROPOSED*
LOCATION TO NEAREST
PROPERTY OR LEASE LINE, FT.
(Also to nearest drlg. unit line, if any)
880'

16. NO. OF ACRES IN LEASE
1,801.192561.19

17. NO. OF ACRES ASSIGNED
TO THIS WELL
160.22

18. DISTANCE FROM PROPOSED LOCATION*
TO NEAREST WELL, DRILLING COMPLETED,
OR APPLIED FOR, ON THIS LEASE, FT.
250'

19. PROPOSED DEPTH
1,550'

20. ROTARY OR CABLE TOOLS
Rotary

21. ELEVATIONS (Show whether DF, RT, GR, etc.)
5,531' GR ungraded

22. APPROX. DATE WORK WILL START*
As soon as approved.

23. PROPOSED CASING AND CEMENTING PROGRAM

SIZE OF HOLE	SIZE OF CASING	WEIGHT PER FOOT	SETTING DEPTH	QUANTITY OF CEMENT
12 1/4"	8 5/8"	24#	130'	100 SX
6 1/4"	4 1/2"	10.5#	1,550'	225 SX - cement to surface

This action is subject to technical and
procedural review pursuant to 43 CFR 3165.3
and appeal pursuant to 43 CFR 3165.4.

RECEIVED
JUN 14 1985
OIL CON. DIV./
DIST. 3

IN ABOVE SPACE DESCRIBE PROPOSED PROGRAM: If proposal is to deepen or plug back, give data on present productive zone and proposed new productive zone. If proposal is to drill or deepen directionally, give pertinent data on subsurface locations and measured and true vertical depths. Give blowout preventer program, if any.

24. SIGNED [Signature] TITLE Administrator, Field Svcs DATE 5/13/85

(This space for Federal or State office use)

PERMIT NO. _____ APPROVAL DATE _____

APPROVED BY _____ TITLE _____
CONDITIONS OF APPROVAL, IF ANY:

APPROVED
AS AMENDED

JUN 13 1985
/s/ J. Stan McKee
For M. MILLENBACH
AREA MANAGER

NMOCC

NEW MEXICO OIL CONSERVATION COMMISSION
WELL LOCATION AND ACREAGE DEDICATION PLAT

Form C-102
Supersedes C-128
Effective 1-1-65

All distances must be from the outer boundaries of the Section.

Operator ENERGY RESERVES GROUP			Lease GALLEGOS CANYON UNIT		Well No. 350
Unit Letter I	Section 33	Township 29N	Range 12W	County San Juan	
Actual Footage Location of Well: 1490 feet from the South line and 880 feet from the East line					
Ground Level Elev. 5531	Producing Formation Pictured Cliffs		Pool West Kutz Pictured Cliffs		Dedicated Acreage: 160.22 Acres

1. Outline the acreage dedicated to the subject well by colored pencil or hachure marks on the plat below.
2. If more than one lease is dedicated to the well, outline each and identify the ownership thereof (both as to working interest and royalty).
3. If more than one lease of different ownership is dedicated to the well, have the interests of all owners been consolidated by communitization, unitization, force-pooling, etc?

☐ Yes ☐ No If answer is "yes," type of consolidation _____

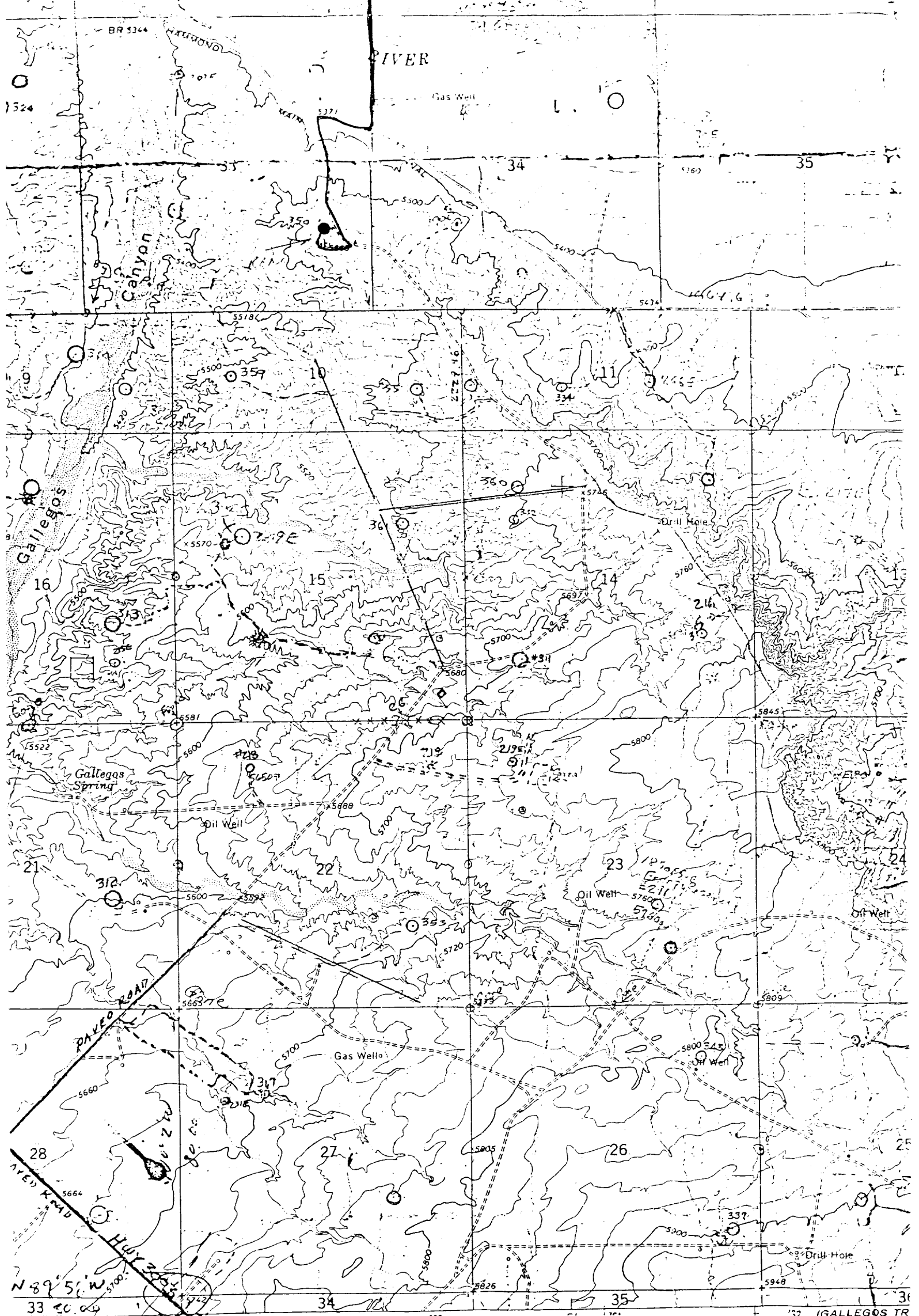
If answer is "no," list the owners and tract descriptions which have actually been consolidated. (Use reverse side of this form if necessary.) _____

No allowable will be assigned to the well until all interests have been consolidated (by communitization, unitization, forced-pooling, or otherwise) or until a non-standard unit, eliminating such interests, has been approved by the Commission.

<p>GAS is dedicated to El Paso Natural Gas Company</p> <p>Sec.</p>		<p>RECEIVED</p> <p>MAY 17 1985</p> <p>BUREAU OF LAND MANAGEMENT FARMINGTON RESOURCE AREA</p>	
		<p>RECEIVED</p> <p>JUN 14 1985</p> <p>OIL CON. DIV.</p> <p>DIST. 3</p>	
<p>33</p>		<p>880'</p> <p>1490'</p>	

Scale: 1"=1000'

<p>CERTIFICATION</p> <p>I hereby certify that the information contained herein is true and complete to the best of my knowledge and belief.</p> <p><i>William J. Fiant</i></p>	
Name	William J. Fiant
Position	Administrator, Field Services
Company	Energy Reserves Group, Inc.
Date	5/3/85
<p>I hereby certify that the well location shown on this plat was plotted from field notes of actual surveys made by me or under my supervision, and that the same is true and correct to the best of my knowledge and belief.</p>	
Date Surveyed	April 23, 1985
Registered Professional Engineer and Land Surveyor	<i>Fred B. Kerr Jr.</i> Fred B. Kerr Jr.
Certificate No.	3950



and published by the Geological
SC&GS, and U. S. Bureau of Reclam
grammetric methods from aerial
and by planetable surveys of the
Field checked by USGS 19...
American datum
ordinate system.

Vicinity Map for
ENERGY RESERVES GROUP #350 GALLEGOS CANYON UNIT
1490'FSL 880'FEL Sec. 33-T29N-R12W
SAN JUAN COUNTY, NEW MEXICO

1"=45'
31 MILS

SCALE 1
2000' 30'
CONTOUR INT
DOTTED LINES REPRE
DATUM IS MEA