

May 8, 1985

Mr. Gilbert Quintana
New Mexico Oil Conservation Division
P. O. Box 2088
Santa Fe, NM 87501

File: DDL-504-400.1

Application for Directional Drilling
USG Section 18 No. 43
SE/NW Section 18, T29N, R16W
San Juan County, New Mexico

Amoco Production Company hereby requests approval to directionally drill the USG Section 18 No. 43. The proposed surface location is 1500' FNL x 1760' FWL, Section 18, T29N, R16W. The proposed bottom hole location is 1650' FNL x 1760' FWL Section 18, T29N, R16W.

This well was previously staked to be orthodox for gas spacing but the well was reevaluated as qualifying for oil spacing. The surface location has already been approved archeologically by the B.I.A. and topographically by the B.L.M. The deviation is being made to remain orthodox for the oil spacing requirements and to satisfy the requirements of the B.I.A. and the B.L.M.

Sincerely,

Original Signed
W. J. Holcomb
by BDS

LJM/ct

Attachments

✓cc: Mr. Ernie Busch
New Mexico Oil Conservation Division
1000 Rio Brazos Road
Aztec, NM 87410

cc: R. J. Criswell
Rm. AB 1152

AM17

RECEIVED

MAY 09 1985

OIL CON. DIV.
DIST.

All distances must be from the outer boundaries of the Section.

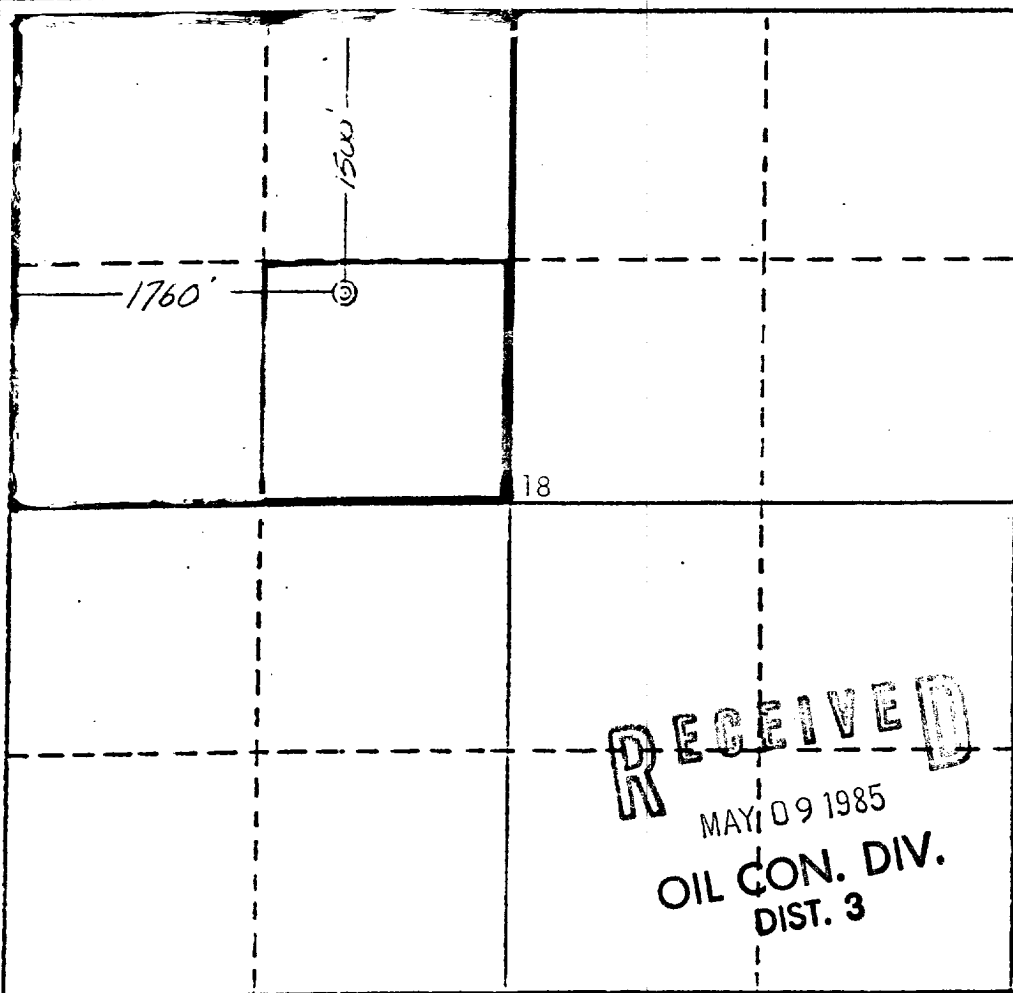
Operator AMOCO PRODUCTION COMPANY		Lease USG SECTION 18		Well No. 43
Unit Letter F	Section 18	Township 29 N	Range 16 W	County San Juan
Actual Footage Location of Wells 1500 feet from the NORTH line and 1760 feet from the WEST line				
Ground Level Elev. 5176	Producing Formation Penn/Leadville	Pool Hogback Penn/Leadville	Dedicated Acreage 40.140 Acres	

1. Outline the acreage dedicated to the subject well by colored pencil or hachure marks on the plat below.
2. If more than one lease is dedicated to the well, outline each and identify the ownership thereof (both as to working interest and royalty).
3. If more than one lease of different ownership is dedicated to the well, have the interests of all owners been consolidated by communitization, unitization, force-pooling, etc?

☐ Yes ☐ No If answer is "yes," type of consolidation _____

If answer is "no," list the owners and tract descriptions which have actually been consolidated. (Use reverse side of this form if necessary.) _____

No allowable will be assigned to the well until all interests have been consolidated (by communitization, unitization, forced-pooling, or otherwise) or until a non-standard unit, eliminating such interests, has been approved by the Division.



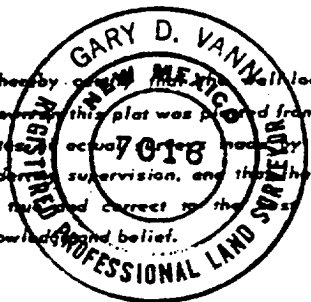
CERTIFICATION

I hereby certify that the information contained herein is true and complete to the best of my knowledge and belief.

B. D. Shaw

Name
B. D. Shaw
Position
Adm. Supervisor
Company
Amoco Production Co.
Date
5-9-85

I hereby certify that the well location shown on this plat was placed from field notes actually made by me or under my supervision, and that the same is true and correct to the best of my knowledge and belief.



Date Surveyed
January 21, 1985
Registered Professional Engineer and/or Land Surveyor
Gary D. Vann
Gary D. Vann

Certificate No.
7016

All distances must be from the outer boundaries of the Section.

Operator Amoco Production Co.			Lease USG Section 18		Well No. 43
Unit Letter F	Section 18	Township 29N	Range 16W	County San Juan	
Actual Postage Location of Well: 1650 feet from the North line and 1760 feet from the West line					
Ground Level Elev. 5176	Producing Formation Penn/Leadville		Pool Hogback Penn/Leadville		Dedicated Acreage: 40/40 Acres

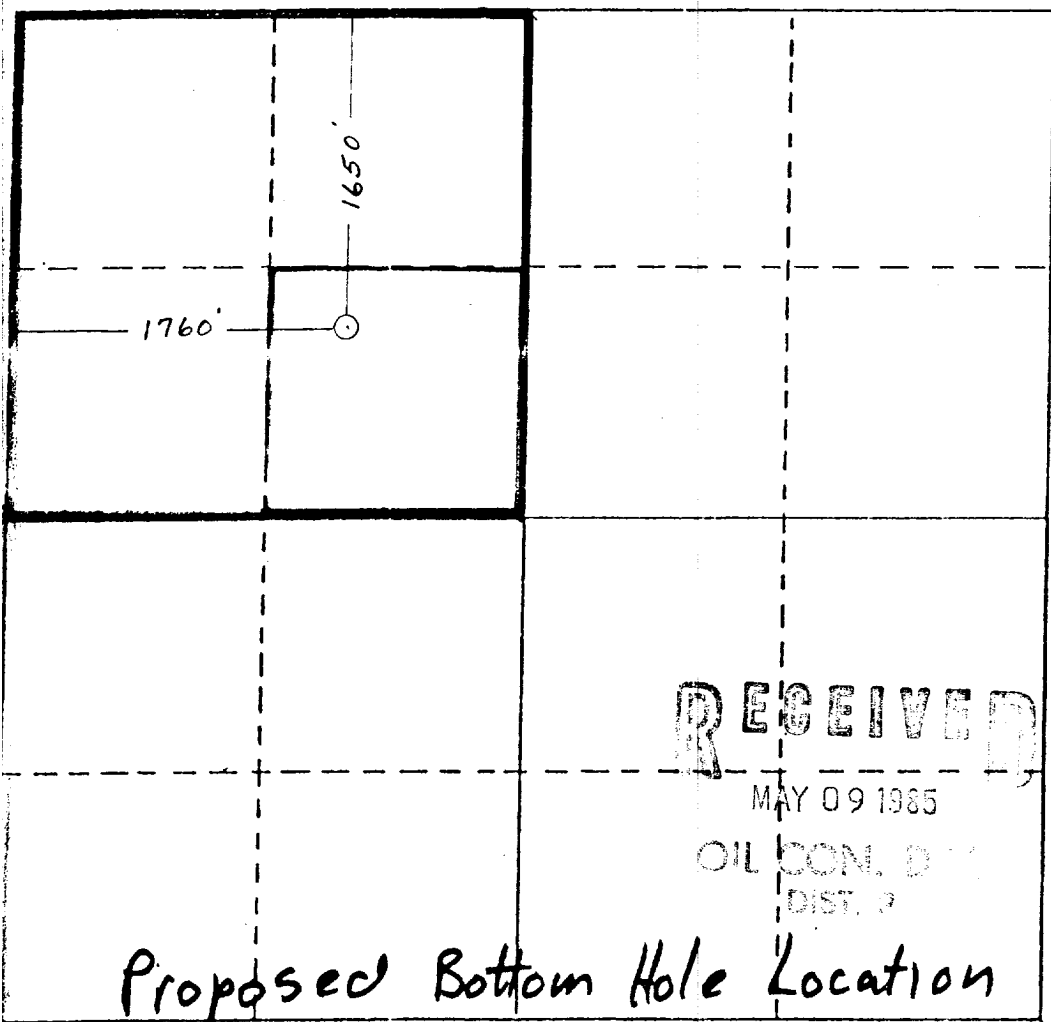
1. Outline the acreage dedicated to the subject well by colored pencil or hatchure marks on the plat below.
2. If more than one lease is dedicated to the well, outline each and identify the ownership thereof (both as to working interest and royalty).
3. If more than one lease of different ownership is dedicated to the well, have the interests of all owners been consolidated by communitization, unitization, force-pooling, etc?

☐ Yes ☐ No If answer is "yes," type of consolidation _____

If answer is "no," list the owners and tract descriptions which have actually been consolidated. (Use reverse side of this form if necessary.) _____

No allowable will be assigned to the well until all interests have been consolidated (by communitization, unitization, forced-pooling, or otherwise) or until a non-standard unit, eliminating such interests, has been approved by the Division.

Proposed Bottom Hole Location



CERTIFICATION

I hereby certify that the information contained herein is true and complete to the best of my knowledge and belief.

B. D. Shaw

Name

B. D. Shaw

Position

Adm. Supervisor

Company

Amoco Production Co.

Date

5-9-85

I hereby certify that the well location shown on this plat was plotted from field notes of actual surveys made by me or under my supervision, and that the same is true and correct to the best of my knowledge and belief.

Date Surveyed

Registered Professional Engineer
and/or Land Surveyor

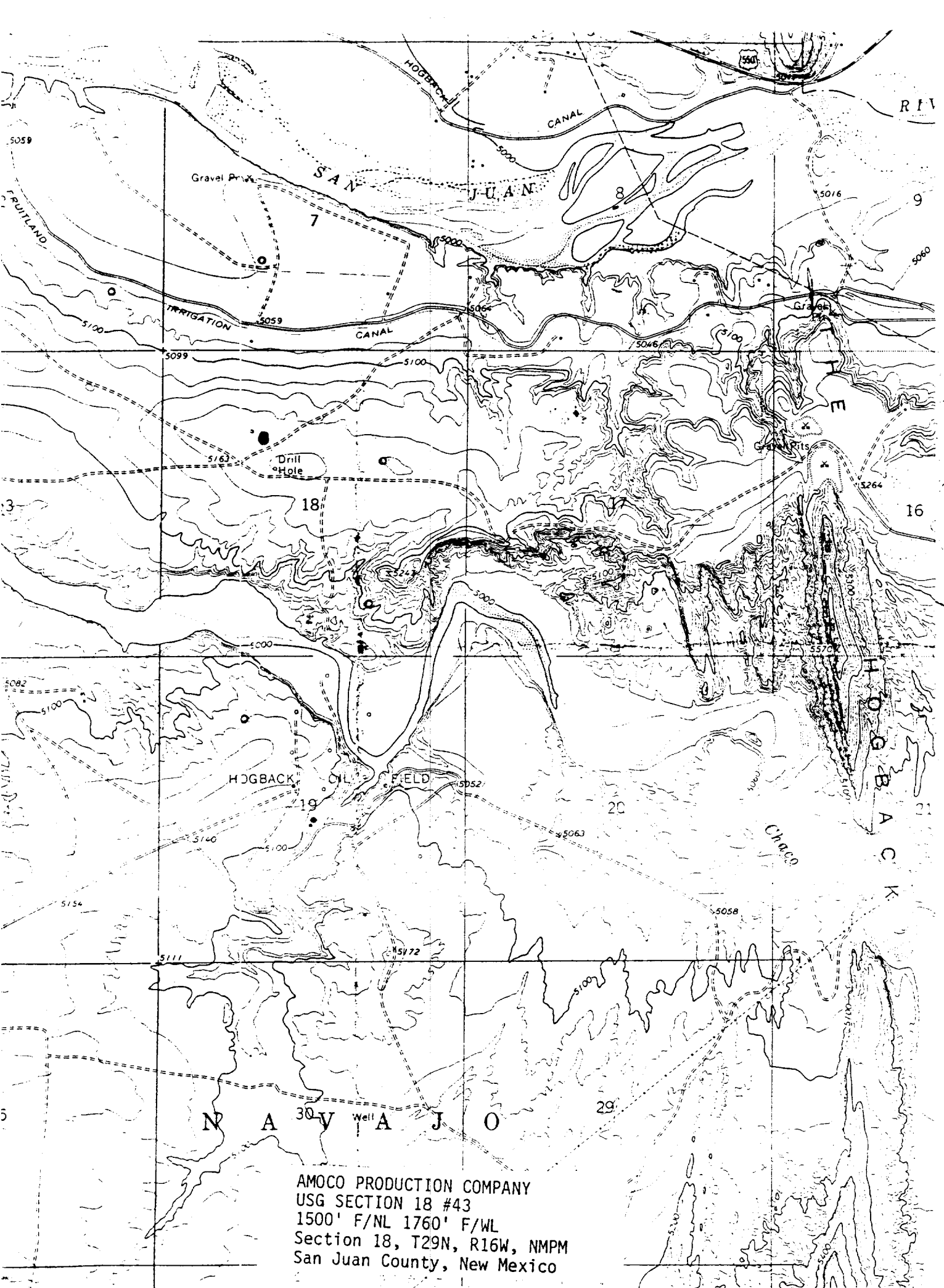
Certificate No.

RECEIVED

MAY 09 1985

OIL CON. DIV.
DIST. 2

Proposed Bottom Hole Location



AMOCO PRODUCTION COMPANY
USG SECTION 18 #43
1500' F/NL 1760' F/WL
Section 18, T29N, R16W, NMPM
San Juan County, New Mexico