

UNITED STATES  
DEPARTMENT OF THE INTERIOR  
BUREAU OF LAND MANAGEMENT

APPLICATION FOR PERMIT TO DRILL, DEEPEN, OR PLUG BACK

1a. TYPE OF WORK

DRILL ☒

DEEPEN ☐

PLUG BACK ☐

b. TYPE OF WELL

OIL  
WELL ☐

GAS  
WELL ☒

OTHER ☐

SINGLE  
ZONE ☒

MULTIPLE  
ZONE ☐

2. NAME OF OPERATOR

Southland Royalty Company

3. ADDRESS OF OPERATOR

PO Box 4289, Farmington, NM 87499

4. LOCATION OF WELL (Report location clearly and in accordance with any State requirements.)\*

At 1110' N, 2025' E

At proposed prod. zone

14. DISTANCE IN MILES AND DIRECTION FROM NEAREST TOWN OR POST OFFICE\*

5 miles from Blanco, NM

15. DISTANCE FROM PROPOSED\*

LOCATION TO NEAREST  
PROPERTY OR LEASE LINE, FT.  
(Also to nearest drig. unit line, if any)

1140'

16. NO. OF ACRES IN LEASE

2258.46

17. NO. OF ACRES ASSIGNED  
TO THIS WELL

N 251.72

18. DISTANCE FROM PROPOSED LOCATION\*

TO NEAREST WELL DRILLING COMPLETED,  
OR APPLIED FOR, ON THIS LEASE, FT.

300'

19. PROPOSED DEPTH

2059'

20. ROTARY OR CABLE TOOLS

Rotary

21. ELEVATIONS (Show whether DF, RT, GR, etc.)

5745' GL

DRILLING OPERATIONS AUTHORIZED ARE  
SUBJECT TO COMPLIANCE WITH ATTACHED

22. APPROX. DATE WORK WILL START\*

23.

PROPOSED CEMENTING PROGRAM  
This action is subject to technical and  
procedural review pursuant to 40 CFR 3100.2  
and appeal pursuant to 40 CFR 3100.4.

| SIZE OF HOLE | SIZE OF CASING | WEIGHT PER FOOT | SETTING DEPTH | QUANTITY OF CEMENT    |
|--------------|----------------|-----------------|---------------|-----------------------|
| 12 1/4"      | 9 5/8"         | 32.3#           | 200'          | 125 cf. circulated    |
| 8 3/4"       | 7"             | 20.0#           | 1895'         | 289 cf. circ. surface |
| 6 1/4"       | 5 1/2" line    | 15.5#           | 1775' 2059'   | do not cement         |

The Fruitland coal formation will be completed.

A 3000 psi WP and 6000 psi test double gate preventer equipped with blind and pipe rams will be used for blow out prevention on this well.

This gas is dedicated.

Lots 5,6,7,8,9,10,11,12 are dedicated to this well

RECEIVED  
DEC 28 1988  
OIL CON. DIV  
DIST. 3

IN ABOVE SPACE DESCRIBE PROPOSED PROGRAM: If proposal is to deepen or plug back, give data on present productive zone and proposed new productive zone. If proposal is to drill or deepen directionally, give pertinent data on subsurface locations and measured and true vertical depths. Give blowout preventer program, if any.

24. SIGNED [Signature] TITLE Regulatory Affairs DATE 12-12-88

(This space for Federal or State office use)

PERMIT NO. \_\_\_\_\_ APPROVAL DATE \_\_\_\_\_

APPROVED BY \_\_\_\_\_ TITLE \_\_\_\_\_ DATE \_\_\_\_\_  
CONDITIONS OF APPROVAL, IF ANY:

\*See Instructions On Reverse Side

**NEW MEXICO OIL CONSERVATION COMMISSION  
WELL LOCATION AND ACREAGE DEDICATION PLAT**

Form C-102  
Supersedes C-128  
Effective 1-1-65

All distances must be from the outer boundaries of the Section.

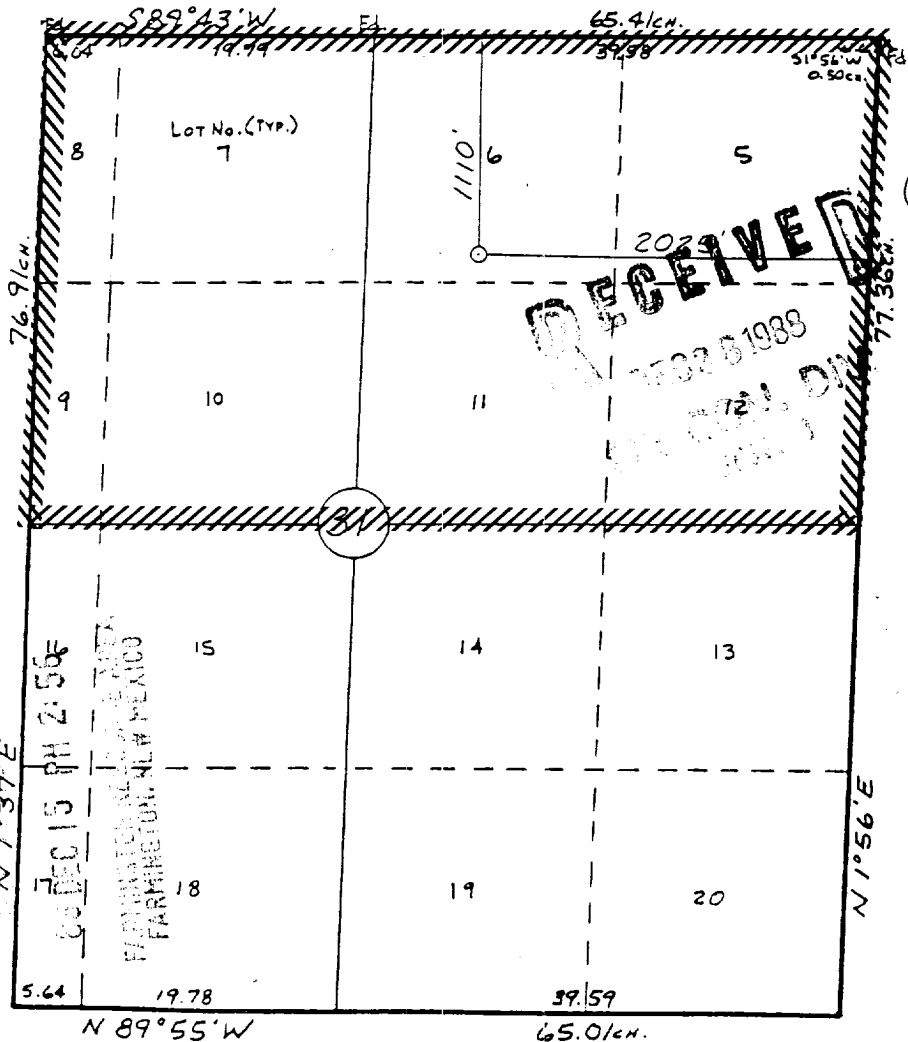
|  |  |                         |   |                           |                        |
|--|--|-------------------------|---|---------------------------|------------------------|
| Operator<br><b>SOUTHLAND ROYALTY COMPANY</b>   |  |                         | Lease<br><b>CAIN (SF-080781)</b>          |                           | Well No.<br><b>725</b> |
| Unit Letter<br><b>B</b>  | Section<br><b>31</b>                         | Township<br><b>29 N</b> | Range<br><b>9 W</b>                       | County<br><b>SAN JUAN</b> |                        |
| Actual Footage Location of Well:<br><div style="display: flex; justify-content: space-between;"> <span>1110 feet from the North line and</span> <span>2025 feet from the East line</span> </div> |  |                         |   |                           |                        |
| Ground Level Elev.<br><b>5745</b>  | Producing Formation<br><b>Fruitland Coal</b> | Pool<br><b>Basin</b>    | Dedicated Acreage: <b>251.72</b><br>Acres |                           |                        |

1. Outline the acreage dedicated to the subject well by colored pencil or hachure marks on the plat below.
2. If more than one lease is dedicated to the well, outline each and identify the ownership thereof (both as to working interest and royalty).
3. If more than one lease of different ownership is dedicated to the well, have the interests of all owners been consolidated by communitization, unitization, force-pooling, etc?

☐ Yes    ☐ No    If answer is "yes," type of consolidation \_\_\_\_\_

If answer is "no," list the owners and tract descriptions which have actually been consolidated. (Use reverse side of this form if necessary.) \_\_\_\_\_

No allowable will be assigned to the well until all interests have been consolidated (by communitization, unitization, forced-pooling, or otherwise) or until a non-standard unit, eliminating such interests, has been approved by the Commission.



**CERTIFICATION**

I hereby certify that the information contained herein is true and complete to the best of my knowledge and belief.

Name  
**Regulatory Affairs**

Position  
**Southland Royalty**

Company  
**12-14-88**

Date

I hereby certify that the well location shown on this plat was plotted from field notes of actual surveys made by me or under my supervision, and that the same is true and correct to the best of my knowledge and belief.

**11-11-88**

Date Surveyed  
**William E. Mahoney II**  
Registered Professional Engineer  
and/or Land Surveyor

**#8466**  
CERTIFIED PROFESSIONAL LAND SURVEYOR

[REDACTED]

