

**UNITED STATES
DEPARTMENT OF THE INTERIOR
BUREAU OF LAND MANAGEMENT**

SUBMIT IN TRIPLICATE*
(Other instructions on reverse side)

Form approved.
Budget Bureau No. 1004-0136
Expires August 31, 1985

30-045-28153

APPLICATION FOR PERMIT TO DRILL, DEEPEN, OR PLUG BACK

1a. TYPE OF WORK
 DRILL DEEPEN PLUG BACK

b. TYPE OF WELL
 OIL WELL GAS WELL OTHER SINGLE ZONE MULTIPLE ZONE

2. NAME OF OPERATOR
BHP Petroleum (Americas) Inc.

3. ADDRESS OF OPERATOR
5847 San Felipe Suite 3600 Houston, Texas 77057-3005

4. LOCATION OF WELL (Report location clearly and in accordance with any State requirements.)*
 At surface **SW NE 1345N + 1805E**
 At proposed prod. zone

14. DISTANCE IN MILES AND DIRECTION FROM NEAREST TOWN OR POST OFFICE*
Approximately 2.5 miles east of Farmington, N.M.

15. DISTANCE FROM PROPOSED* **1395'** FROM LOCATION TO NEAREST PROPERTY OR LEASE LINE, FT. (Also to nearest drilg. unit line, if any) **Unit Boundary**

16. NO. OF ACRES IN LEASE **2,561.19** *437.32*

17. NO. OF ACRES ASSIGNED TO THIS WELL **E/320 316-32**

18. DISTANCE FROM PROPOSED LOCATION* TO NEAREST WELL, DRILLING, COMPLETED, OR APPLIED FOR, ON THIS LEASE, FT. **150'**

19. PROPOSED DEPTH **1760'**

20. ROTARY OR CABLE TOOLS
Rotary

21. ELEVATIONS (Show whether DF, RT, GR, etc.)
5635' GR This action is subject to technical and

5. LEASE DESIGNATION AND SERIAL NO.
SF 078370

6. IF INDIAN, ALLOTTEE OR TRIBE NAME

7. UNIT AGREEMENT NAME
Gallegos Canyon Unit

8. FARM OR LEASE NAME
Gallegos Canyon Unit

9. WELL NO.
388

10. FIELD AND POOL, OR WILDCAT
Basin Fruitland Coal

11. SEC., T., R., M., OR BLK. AND SURVEY OR AREA
G Sec. 17, T29N, R12W

12. COUNTY OR PARISH
San Juan

13. STATE
New Mexico

22. APPROX. DATE WORK WILL START*
Fall 1990

23. **PROPOSED CASING AND CEMENTING PROGRAM**

SIZE OF HOLE	SIZE OF CASING	WEIGHT PER FOOT	SETTING DEPTH	QUANTITY OF CEMENT
8 3/4"	7"	20#	± 130'	50 sx (57.5 cu.ft.)
6 1/4"	4 1/2"	10.5#	±1760'	221 sx (273 cu.ft.)

RECEIVED
 AUG 21 1990
 OIL CON. DIV
 - DIST. 3

IN ABOVE SPACE DESCRIBE PROPOSED PROGRAM: If proposal is to deepen or plug back, give data on present productive zone and proposed new productive zone. If proposal is to drill or deepen directionally, give pertinent data on subsurface locations and measured and true vertical depths. Give blowout preventer program, if any.

24. SIGNED *Chuck Williams* TITLE **Field Services Administrator** DATE **7/17/90**
 (This space for Federal or State office use)

PERMIT NO. _____ APPROVAL DATE _____

APPROVED BY _____ TITLE _____

CONDITIONS OF APPROVAL, IF ANY: _____

AS APPROVED
John Shell
 FIELD MANAGER

*See Instructions On Reverse Side

OIL CONSERVATION DIVISION

P.O. Box 2088
 Santa Fe, New Mexico 87504-2088

DISTRICT I
 P.O. Box 1980, Hobbs, NM 88240

DISTRICT II
 P.O. Drawer DD, Artesia, NM 88210

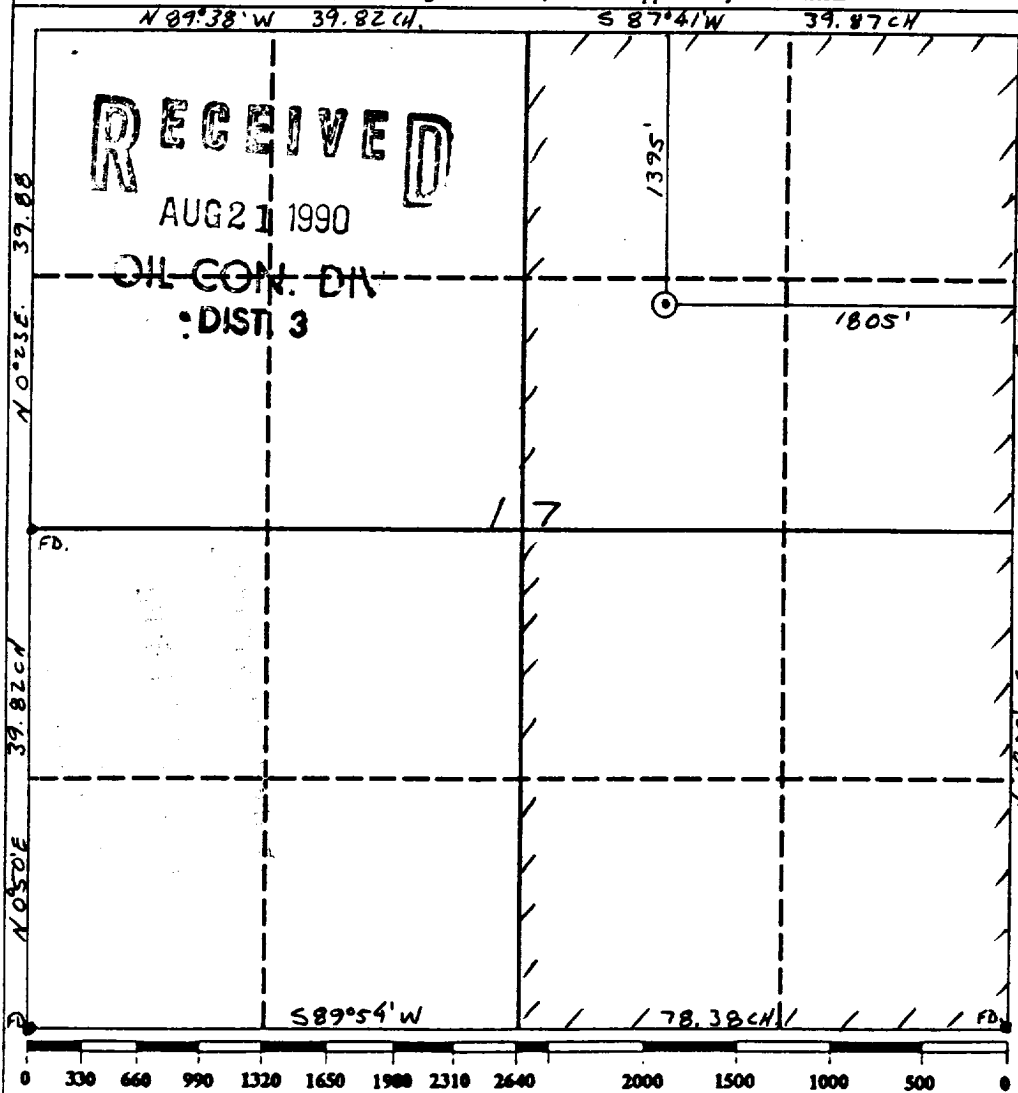
DISTRICT III
 1000 Rio Brazos Rd., Aztec, NM 87410

WELL LOCATION AND ACREAGE DEDICATION PLAT

All Distances must be from the outer boundaries of the section

Operator BHP Petroleum (Americas) Incorporated			Lease Gallegos Canyon Unit		Well No. 388
Unit Letter G	Section 17	Township 29N	Range 12W	County San Juan	
Actual Footage Location of Well: 1395 feet from the North line and 1805 feet from the East line					
Ground level Elev. 5635'	Producing Formation Fruitland Coal		Pool Basin Fruitland Coal		Dedicated Acreage: 320 3/4 Acres

- Outline the acreage dedicated to the subject well by colored pencil or hatchure marks on the plat below.
- If more than one lease is dedicated to the well, outline each and identify the ownership thereof (both as to working interest and royalty).
- If more than one lease of different ownership is dedicated to the well, have the interest of all owners been consolidated by communitization, unitization, force-pooling, etc.?
 Yes No If answer is "yes" type of consolidation _____
 If answer is "no" list the owners and tract descriptions which have actually been consolidated. (Use reverse side of this form if necessary).
 No allowable will be assigned to the well until all interests have been consolidated (by communitization, unitization, forced-pooling, or otherwise) or until a non-standard unit, eliminating such interest, has been approved by the Division.



OPERATOR CERTIFICATION
 I hereby certify that the information contained herein is true and complete to the best of my knowledge and belief.

Signature: *Chuck Williams*
 Printed Name: **Chuck Williams**
 Position: **Field Services Administrator**
 Company: **BHP Petroleum (Americas) Inc.**
 Date: **7/17/90**

SURVEYOR CERTIFICATION
 I hereby certify that the well location shown on this plat was plotted from field notes of actual surveys made by me or under my supervision, and that the same is true and correct to the best of my knowledge and belief. 6-29-90

Date Surveyed: _____
 Roy A. Rush
 Signature & Seal of Professional Surveyor: *Roy A. Rush*
 Certificate: **8894**

BHP PETROLEUM (AMERICAS) INC.
GALLEGOS CANYON UNIT #388
1395'FNL & 1805'FEL
Sec.17, T29N, R12W
San Juan Co., N.M.

