

State of New Mexico  
Energy, Minerals & Mining Resources Department  
OIL CONSERVATION DIVISION  
2040 South Pacheco  
Santa Fe, NM 87505

Form C - 102

☒ AMENDED REPORT

WELL LOCATION AND ACREAGE DEDICATION PLAT

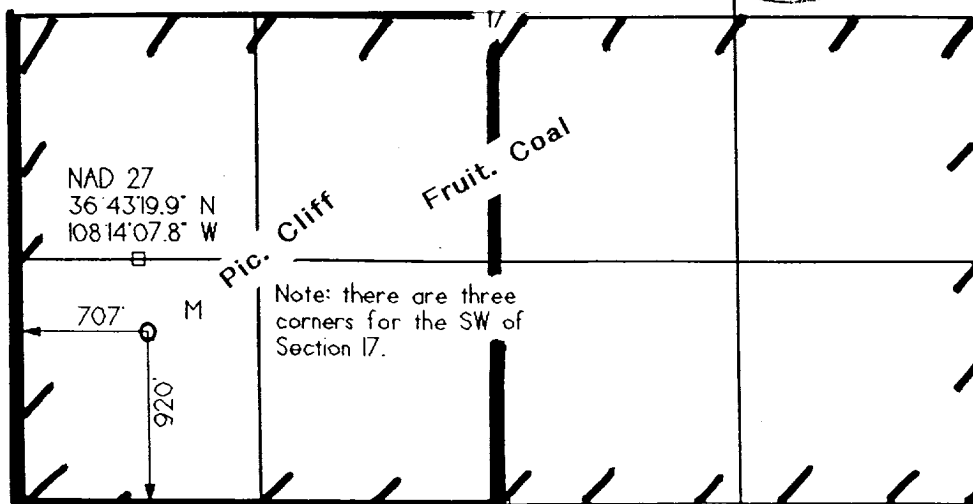
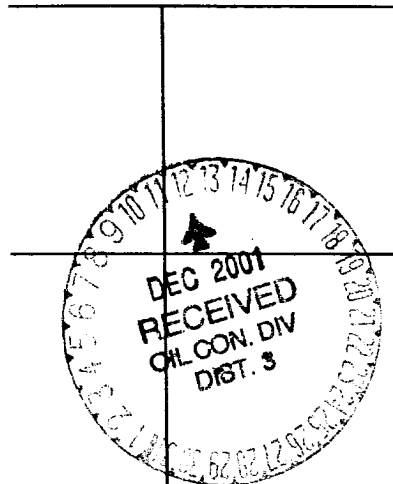
APA Number	Pool Code 71629 & 79680	Pool Name BASIN FRUIT. COAL & WEST KUTZ PC
Property Code	Property Name RPC 17	Well Number 3
OGPD No. 019219	Operator Name RICHARDSON OPERATING COMPANY	Elevation 5225'

Surface Location									
UL or Lot	Sec.	Twp.	Rge.	Lot Lth.	Feet from	North/South	Feet from	East/West	County
M	17	29 N.	13 W.		.920	SOUTH	707'	WEST	SAN JUAN

Bottom Hole Location If Different From Surface									
UL or Lot	Sec.	Twp.	Rge.	Lot Lth.	Feet from	North/South	Feet from	East/West	County
Dedication	Joint ?	Consolidation	Order No.						

IS COMPLETION UNTIL ALL INTERESTS HAVE BEEN CONSOLIDATED  
UNIT HAS BEEN APPROVED BY THE DIVISION

Only change  
was to outline  
+ label SW 1/4



<b>OPERATOR CERTIFICATION</b> I hereby certify that the information contained herein is true and complete to the best of my knowledge and belief. Signature <i>Brian Wood</i> Printed Name BRIAN WOOD Title CONSULTANT Date DEC. 9, 2001	
<b>SURVEYOR CERTIFICATION</b> I hereby certify that the well location on this plat was plotted from field notes of actual surveys made by me or under my supervision, and that the same is true and correct to the best of my belief. Date of Survey November 2001 Signature and Seal of Surveyor 	