

COMPANY BLACKWOOD & NICHOLS

LEASE N.E. BLANCO UNIT WELL No. 22 A

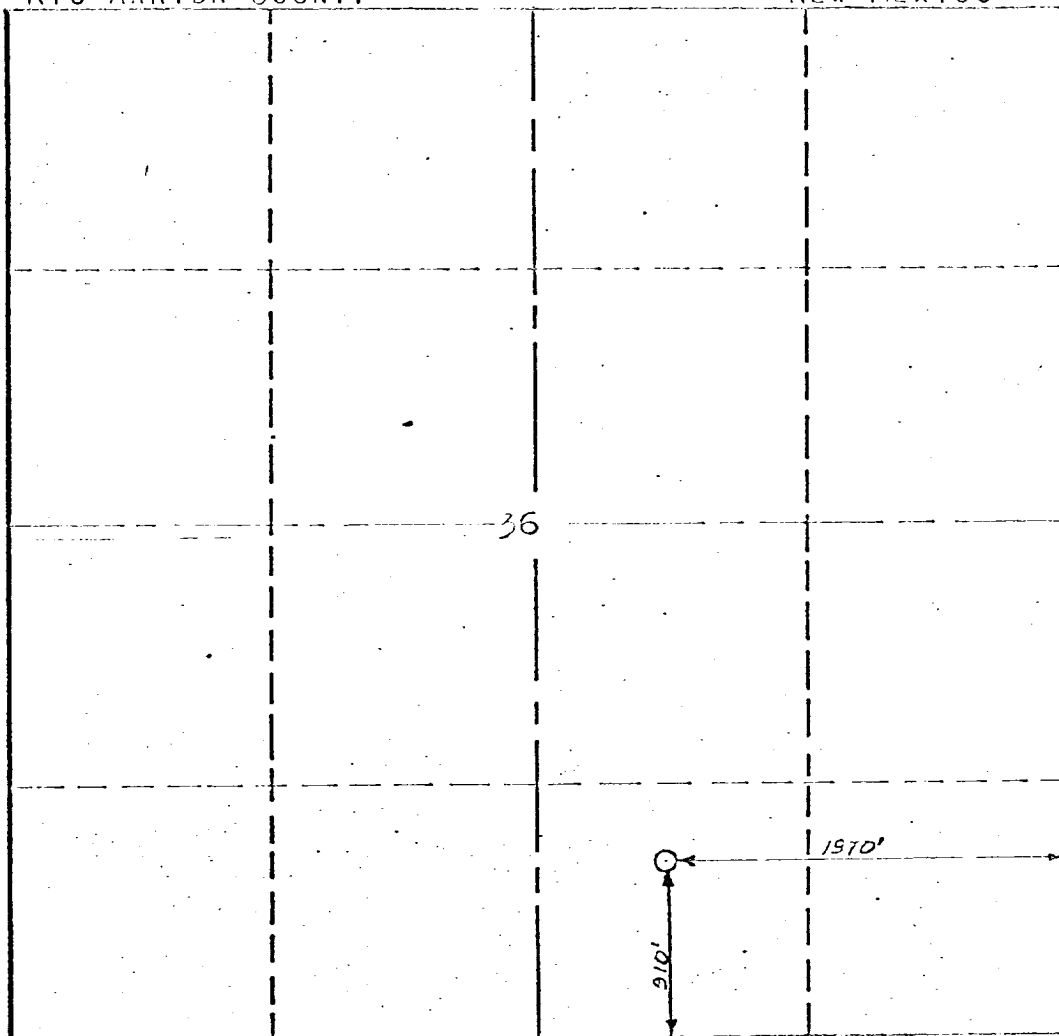
SECTION 36 T. 31N., R. 7W., N.M.P.M.

LOCATION 910' FROM THE SOUTH LINE
1970' FROM THE EAST LINE

ELEVATION UNGRADED GROUND ELEVATION -- 6458
USGS DATUM

RIO ARriba COUNTY

NEW MEXICO



Scale: 1" = 1000'

The undersigned, KROEGER ENGINEERING COMPANY, hereby certifies that the above plat was prepared from field notes of actual surveys made by them, and that the same are true and correct to the best of their knowledge and belief.

DATE: APRIL 5, 1976

KROEGER ENGINEERING COMPANY
By: John A. Kroeger
John A. Kroeger, President

