

UNITED STATES
DEPARTMENT OF THE INTERIOR
GEOLOGICAL SURVEY

APPLICATION FOR PERMIT TO DRILL, DEEPEN OR PLUG BACK

1a. TYPE OF WORK

DRILL ☒DEEPEN ☐PLUG BACK ☐

b. TYPE OF WELL

OIL
WELL ☐GAS
WELL ☒OTHER ☐

2. NAME OF OPERATOR

AMOCO PRODUCTION COMPANY

3. ADDRESS OF OPERATOR

501 Airport Drive, Farmington NM 87401

4. LOCATION OF WELL (Report location clearly and in accordance with any State requirements.)

At surface 1100' FNL x 790' FWL

At proposed prod. zone same

14. DISTANCE IN MILES AND DIRECTION FROM NEAREST TOWN OR POST OFFICE*

18 miles Northeast of Gobernador New Mexico

15. DISTANCE FROM PROPOSED*

LOCATION TO NEAREST
PROPERTY OR LEASE LINE, FT.
(Also to nearest drlg. unit line, if any)

790'

16. NO. OF ACRES IN LEASE

2559.57

18. DISTANCE FROM PROPOSED LOCATION*

TO NEAREST WELL, DRILLING, COMPLETED,
OR APPLIED FOR, ON THIS LEASE, FT.

None

19. PROPOSED DEPTH

7883'

17. NO. OF ACRES ASSIGNED
TO THIS WELL

W 320

20. ROTARY OR CABLE TOOLS

Rotary

21. ELEVATIONS (Show whether DF, RT, CR, etc.)

7004' GL

22. APPROX. DATE WORK WILL START*

as soon as permitted

23.

DRILLING OPERATIONS AUTHORIZED ARE
SUBJECT TO COMPLIANCE WITH PROPOSED
PROPOSED CASING AND CEMENTING PROGRAM
GENERAL REQUIREMENTSThis action is subject to administrative
appeal pursuant to 36 CFR 290.

SIZE OF HOLE	SIZE OF CASING	WEIGHT PER FOOT	SETTING DEPTH	QUANTITY OF CEMENT
15"	10 3/4"(NEW)	40.5# K-55	300'	455 sx Class "B" w/2% CaCl ₂ -circ
9 7/8"	7 5/8"(NEW)	26.4# K-55	3321'	780 sx-cementing procedure below
6 3/4"	5 1/2"(NEW)	17.0# N-80	7883'	950 sx-cementing procedure below

Amoco proposes to drill the above well to further develop the Basin Dakota reservoir. The well will be drilled to the surface casing point using native mud. The well will then be drilled to the Intermediate TD with a low solids nondispersed mud system. The well will then be drilled to TD with gas. Completion design will be based on open hole logs. Copies of all logs will be filed upon completion. Amoco's standard blowout prevention will be employed; see attached drawing for blowout preventer design.

Upon completion the well location will be cleaned and the reserve pit filled and leveled. The gas produced from this well is not dedicated to a gas sales contract.

IN ABOVE SPACE DESCRIBE PROPOSED PROGRAM: If proposal is to deepen or plug back, give data on present productive zone and proposed new productive zone. If proposal is to drill or deepen directionally, give pertinent data on subsurface locations and measured and true vertical depths. Give blowout preventer program, if any.

24.

Original Signed By
W. L. [Signature]

SIGNED

TITLE District Engineer

DATE 3/31/81

(This space for Federal or State office use)

PERMIT NO.

APPROVAL DATE

APPROVED BY

TITLE

CONDITIONS OF APPROVAL, IF ANY:

oh3 NOW
86

APPROVED AS AMENDED
JUN 08 1981 Dean Elliott FOR JAMES F. SIMS DISTRICT ENGINEER

P. O. BOX 2088

ENERGY AND MINERALS DEPARTMENT

SANTA FE, NEW MEXICO 87501

Form C-107
Revised 10-1-78

All distances must be from the outer boundaries of the Section.

1. Outline the acreage dedicated to the subject well by colored pencil or hatchure marks on the plat below.

2. If more than one lease is dedicated to the well, outline each and identify the ownership thereof (both as to working interest and royalty).

3. If more than one lease of different ownership is dedicated to the well, have the interests of all owners been consolidated by communitization, unitization, force-pooling, etc?

☒ Yes ☐ No If answer is "yes," type of consolidation Unitization

If answer is "no," list the owners and tract descriptions which have actually been consolidated. (Use reverse side of this form if necessary.) _____

No allowable will be assigned to the well until all interests have been consolidated (by communitization, unitization, forced-pooling, or otherwise) or until a non-standard unit, eliminating such interests, has been approved by the Commission.

790'

1100'

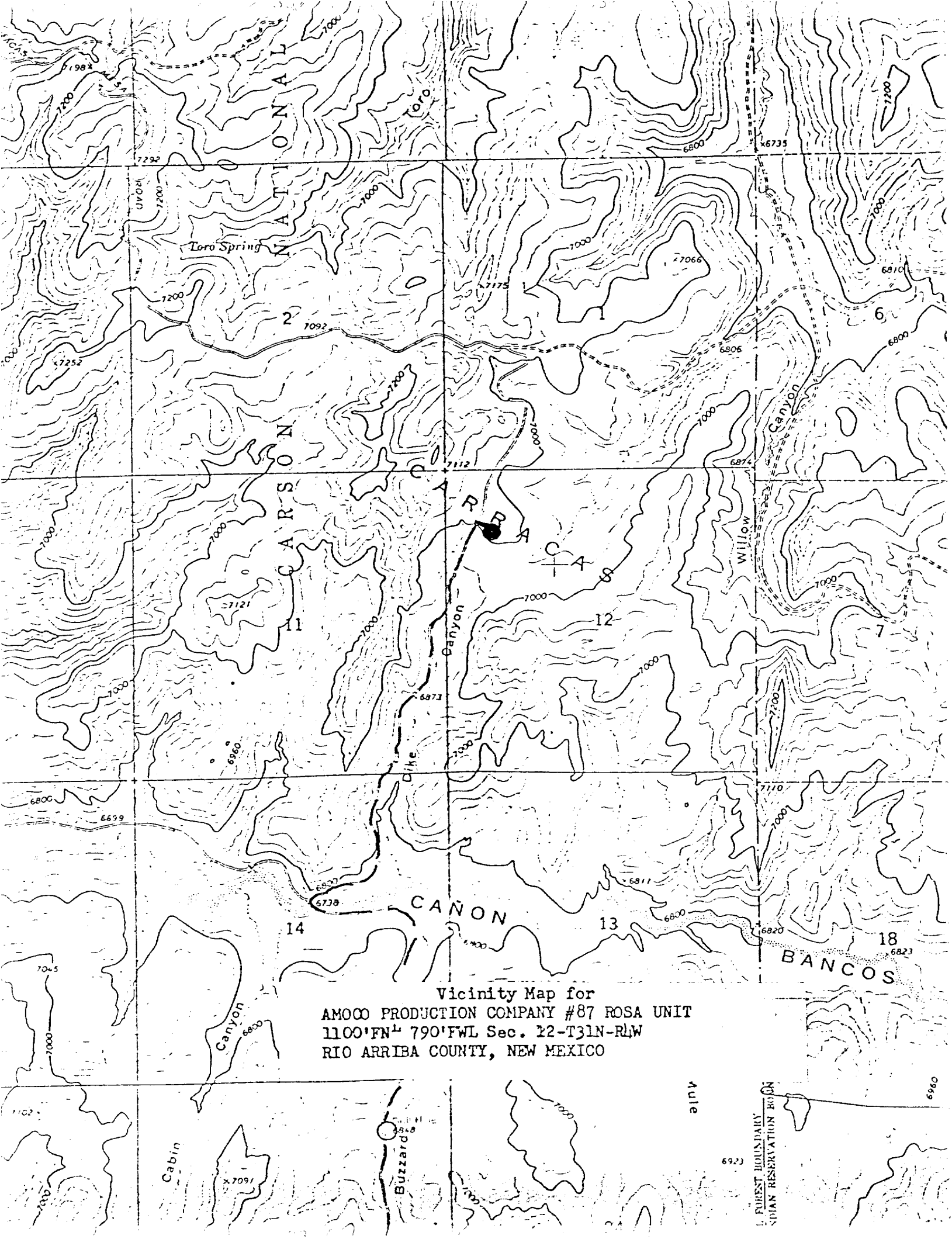
Sec.

12

RECEIVED
JUN 10 1981
OIL CON. COM.
DIST. 3

Scale: 1"=1000'

CERTIFICATION	
I hereby certify that the information contained herein is true and complete to the best of my knowledge and belief.	
<i>W. L. Peterson</i>	
Name	<i>W. L. Peterson</i>
Position	DISTRICT ENGINEER
Company	AMOCO PRODUCTION COMPANY
Date	3/12/81
I hereby certify that the well location shown on this plat was plotted from field notes of actual surveys made by me or under my supervision, and that the same is true and correct to the best of my knowledge and belief.	
Date Surveyed	March 2, 1981
Registered Professional Engineer and Land Surveyor	<i>Fred B. Kern Jr.</i> Fred B. Kern Jr.
Certificate No.	3950



Vicinity Map for
AMOCO PRODUCTION COMPANY #87 ROSA UNIT
1100'FN¹ 790'FWL Sec. 12-T31N-R1W
RIO ARriba COUNTY, NEW MEXICO

FOREST BOUNDARY
SPANISH RESERVATION BOUNDARY