

UNITED STATES
DEPARTMENT OF THE INTERIOR
GEOLOGICAL SURVEY30-039-22767
5. LEASE DESIGNATION AND SERIAL NO.

APPLICATION FOR PERMIT TO DRILL, DEEPEN, OR PLUG BACK

1a. TYPE OF WORK

DRILL ☒DEEPEN ☐PLUG BACK ☐

b. TYPE OF WELL

OIL
WELL ☐GAS
WELL ☒OTHER ☐

2. NAME OF OPERATOR

AMOCO PRODUCTION COMPANY

3. ADDRESS OF OPERATOR

501 Airport Drive, Farmington NM, 87401

4. LOCATION OF WELL (Report location clearly and in accordance with any State requirements.)

At surface 1520' FNL & 790' FEL

At proposed prod. zone same

14. DISTANCE IN MILES AND DIRECTION FROM NEAREST TOWN OR POST OFFICE*

16.8 miles Northeast of Gobernador New Mexico

15. DISTANCE FROM PROPOSED*

LOCATION TO NEAREST
PROPERTY OR LEASE LINE, FT.
(Also to nearest drlg. unit line, if any)

790'

16. NO. OF ACRES IN LEASE

2284.16

17. NO. OF ACRES ASSIGNED
TO THIS WELL

E 320

18. DISTANCE FROM PROPOSED LOCATION*

TO NEAREST WELL, DRILLING, COMPLETED,
OR APPLIED FOR, ON THIS LEASE, FT.

None DRILLING OPER. 7965'

19. PROPOSED DEPTH

20. ROTARY OR CABLE TOOLS

Rotary

21. ELEVATIONS (Show whether DF, RT, GR, etc.)

6922' GL

22. APPROX. DATE WORK WILL START*

as soon as permitted

23. PROPOSED CASING AND CEMENTING PROGRAM

This action is subject to appeal pursuant to 20 CFR 250.

SIZE	TYPE	WEIGHT PER FOOT	SETTING DEPTH	REMARKS
10 3/4"	(NEW)	40.5# K-55	300'	455 sx Class "B" w/ 2# CaCl ₂ -circ
9 7/8"	(NEW)	26.4# K-55	3400'	790 sx-cementing procedure below
6 3/4"	(NEW)	17# N-80	7965'	990 sx-cementing procedure below

Amoco proposes to drill the above well to further develop the Basin Dakota reservoir. The well will be drilled to the surface casing point using native mud. The well will then be drilled to the Intermediate TD with a low solids nondispersed mud system. The well will then be drilled to TD with gas. Completion design will be based on open hole logs. Copies of all logs will be filed upon completion. Amoco's standard blowout prevention will be employed; see attached drawing for blowout preventer design.

Upon completion the well location will be cleaned and the reserve pit filled and leveled. The gas produced from this well is not dedicated to a gas sales contract.

CEMENTING PROCEDURES

7 5/8" Int Casing- 690 sx Class "B" w/ 50-50 POZ, 6% gel, 2# med tuf plug/sx, and 0.8% FLA; Tail in with 100sx Class "B" Neat-circ

5 1/2" Prod. Casing- 890 sx Class "B" w/ 8% gel, and .4% HR4/sx; Tail in with 100 sx Class "B" Neat with 1/4 tuf plug/sx and .4% HR4 per sx-circ

IN ABOVE SPACE DESCRIBE PROPOSED PROGRAM: If proposal is to deepen or plug back, give data on present productive zone and proposed new productive zone. If proposal is to drill or deepen directionally, give pertinent data on subsurface locations and measured and true vertical depths. Give blowout preventer program, if any.

24. Original Signed By

SIGNED

W. L. Peterson

TITLE District Engineer

DATE 3/30/81

(This space for Federal or State office use)

PERMIT NO.

APPROVAL DATE

APPROVED BY
CONDITIONS OF APPROVAL, IF ANY:

TITLE

DATE

NSL 1366

ah

NMGCP

STATE OF NEW MEXICO

ENERGY AND MINERALS DEPARTMENT

SANTA FE, NEW MEXICO 87501

All distances must be from the outer boundaries of the Section.

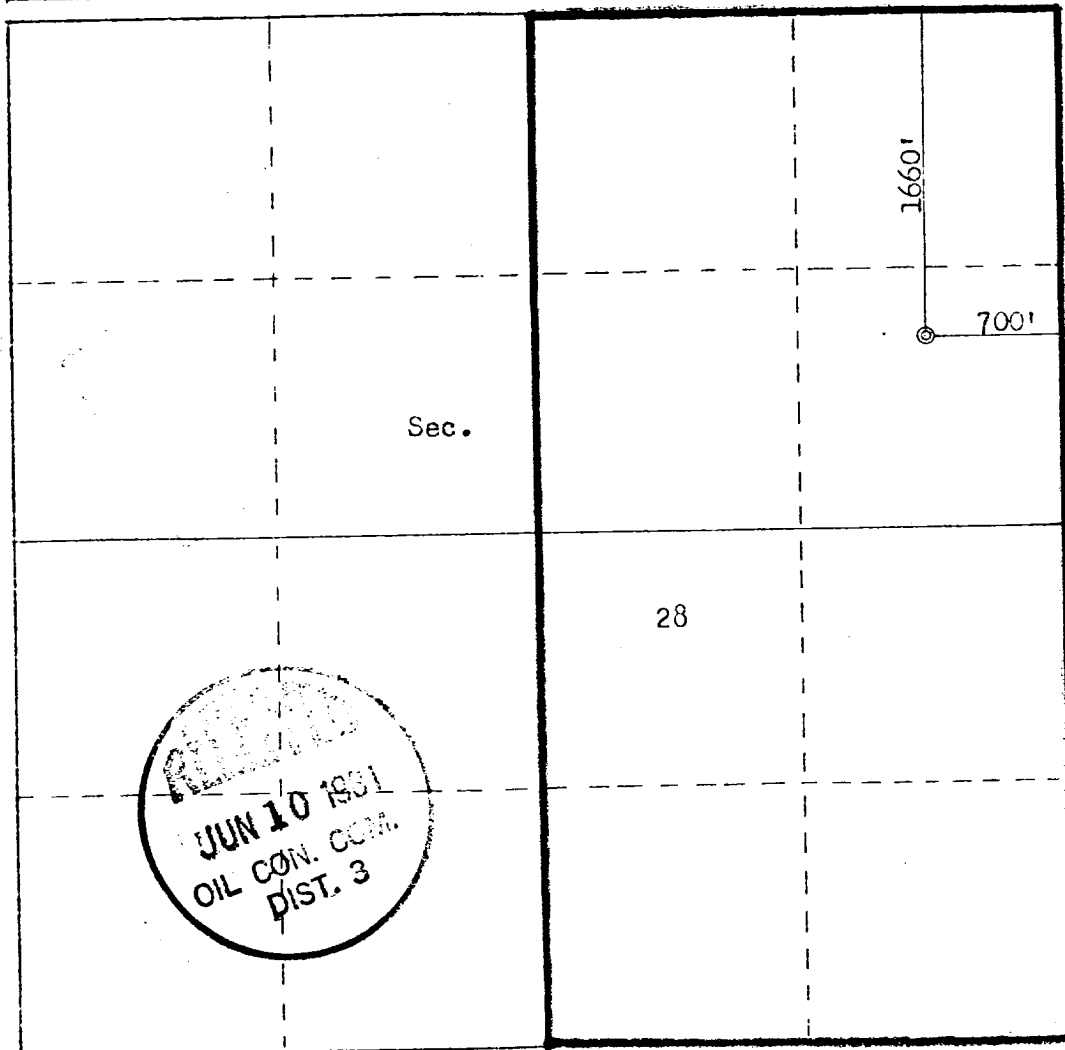
Operator AMOCO PRODUCTION COMPANY			Lease ROSA UNIT		Well No. 86
Unit Letter H	Section 28	Township 31N	Range 4W	County Rio Arriba	
Actual Footage Location of Well:					
1660 feet from the North line and		700 feet from the East line			
Ground Level Elev: 6925	Producing Formation Dakota	Pool Basin Dakota		Dedicated Acreage: 320 Acres	

1. Outline the acreage dedicated to the subject well by colored pencil or hatchure marks on the plat below.
2. If more than one lease is dedicated to the well, outline each and identify the ownership thereof (both as to working interest and royalty).
3. If more than one lease of different ownership is dedicated to the well, have the interests of all owners been consolidated by communitization, unitization, force-pooling, etc?

☒ Yes ☐ No If answer is "yes," type of consolidation Unitization

If answer is "no," list the owners and tract descriptions which have actually been consolidated. (Use reverse side of this form if necessary.)

No allowable will be assigned to the well until all interests have been consolidated (by communitization, unitization, forced-pooling, or otherwise) or until a non-standard unit, eliminating such interests, has been approved by the Commission.



Scale: 1"=1000'

CERTIFICATION

I hereby certify that the information contained herein is true and complete to the best of my knowledge and belief.

Wayne L. Peterson

Name

W. L. PETERSON

Position

DISTRICT ENGINEER

Company

AMOCO PRODUCTION COMPANY

Date

3/31/81

I hereby certify that the well location shown on this plat was plotted from field notes of actual surveys made by me or under my supervision, and that the same is true and correct to the best of my knowledge and belief.

Date Surveyed

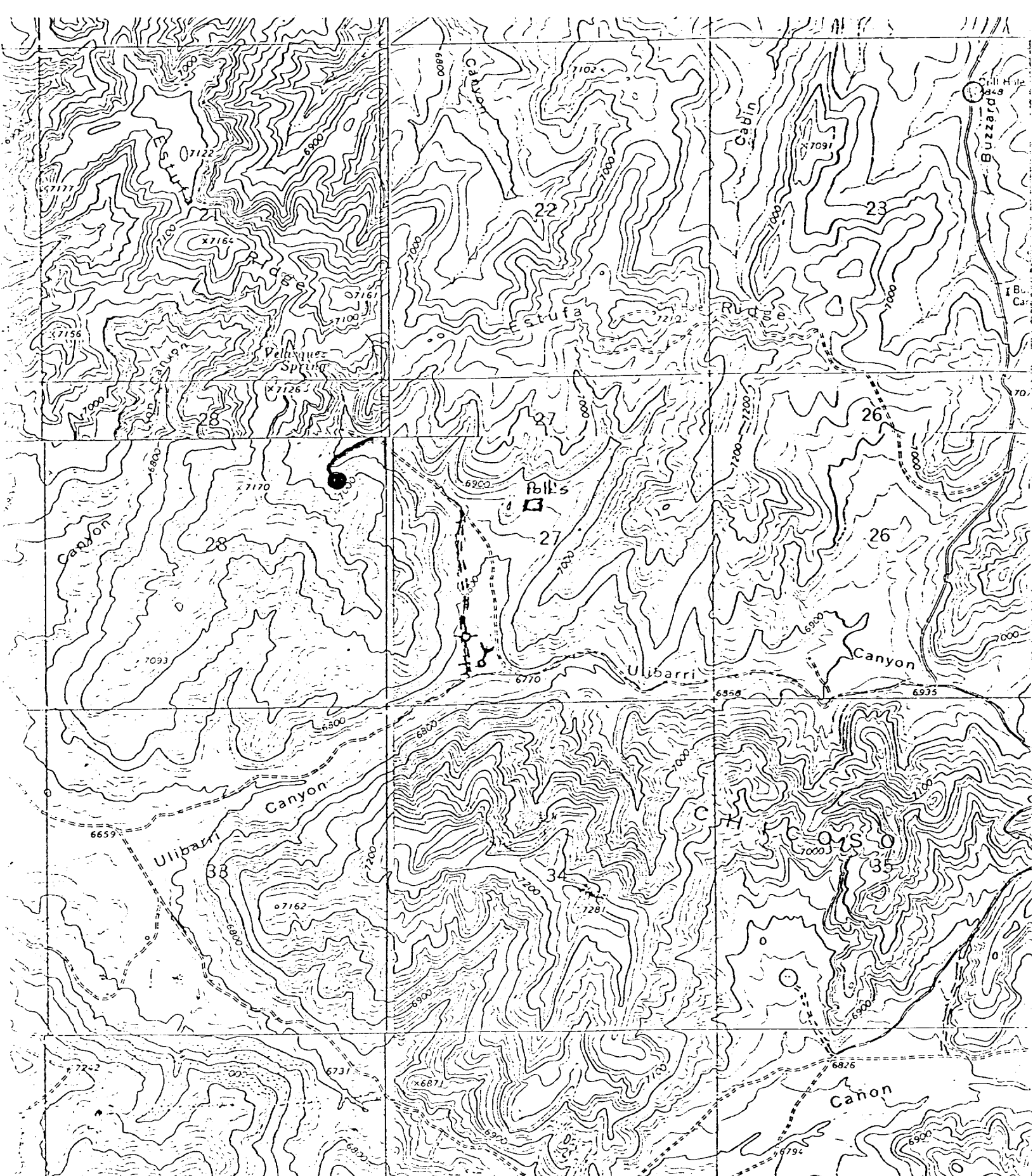
March 30, 1981

Registered Professional Engineer and Land Surveyor

Fred B. Kerr Jr.

Certificate No.

3950



Vicinity Map for
AMOCO PRODUCTION COMPANY #86 ROSA UNIT
1660'FNL 700'FEL Sec. 28-T31N-R4W
RIO ARRIBA COUNTY, NEW MEXICO