

UNITED STATES
DEPARTMENT OF THE INTERIOR
GEOLOGICAL SURVEY

RECEIVED
SUBMIT IN TRIPLICATE
(Other instructions on reverse side)

AUG 15 1983

Form approved.
Budget Bureau No. 42-R1425.

30-039-23271

APPLICATION FOR PERMIT TO DRILL, DEEPEN, OR PLUG BACK

1a. TYPE OF WORK
DRILL ☒ DEEPEN ☐ PLUG BACK ☐

b. TYPE OF WELL
OIL WELL ☒ GAS WELL ☒ OTHER ☐ SINGLE ZONE ☐ MULTIPLE ZONE ☒

2. NAME OF OPERATOR
Amoco Production Company

3. ADDRESS OF OPERATOR
501 Airport Drive, Farmington, NM 87401

4. LOCATION OF WELL (Report location clearly and in accordance with any State requirements. *)
At surface 820' FSL x 1820' FWL

At proposed prod. zone

14. DISTANCE IN MILES AND DIRECTION FROM NEAREST TOWN OR POST OFFICE
12 miles northwest of Gobernador

15. DISTANCE FROM PROPOSED* LOCATION TO NEAREST PROPERTY OR LEASE LINE, FT.
(Also to nearest drlg. unit line, if any) 820'

18. DISTANCE FROM PROPOSED LOCATION* TO NEAREST WELL, DRILLING COMPLETED, OR APPLIED FOR, ON THIS LEASE, FT. 6384'

21. ELEVATIONS (Show whether DF, RT, GR, etc.)
DRILLING OPERATIONS AUTHORIZED ARE 6436' GL

23. SUBJECT TO COMPLIANCE WITH ATTACHED PROPOSED CASING AND CEMENTING PROGRAM
"GENERAL REQUIREMENTS"

SIZE OF HOLE	SIZE OF CASING	WEIGHT PER FOOT	SETTING DEPTH
17-1/2"	13-3/4" (NEW)	48# H-40	400'
*10-5/8"	8-5/8" (NEW)	32# K-55	3651'
7-7/8"	4-1/2"	11.6# N-80	7983'

Amoco proposes to drill the above well to further develop the Basin Dakota/Undes. Gallup reservoirs. The well will be drilled to the surface casing point using native mud. The well will then be drilled to TD with a low solids non-dispersed mud system. Completion design will be based on open hole logs. Copies of all logs will be filed upon completion. Amoco's standard blowout prevention will be employed; see attached drawing for blowout preventer design.

DV tool set at 5800'.

Upon completion, the well location will be cleaned and the reserve pit filled and leveled.

Gas produced from this well is not dedicated.

* Intermediate casing is contingent upon whether high water flow is encountered.

AS ABOVE SPACE DESCRIBE PROPOSED PROGRAM: If proposal is to deepen or plug back, give data on present productive zone and proposed new productive zone. If proposal is to drill or deepen directionally, give pertinent data on subsurface locations and measured and true vertical depths. Give blowout preventer program, if any.

Original Signed By
SIGNED: [Signature] TITLE: District Engineer

(This space for Federal or State office use)

PERMIT NO. APPROVAL DATE

APPROVED BY: TITLE:

DATE 8/30/83
APPROVED AS AMENDED
DATE AUG 11 1983
[Signature]
AREA MANAGER
FARMINGTON RESOURCE AREA

11/30/83

All distances must be from the outer boundaries of the Section.

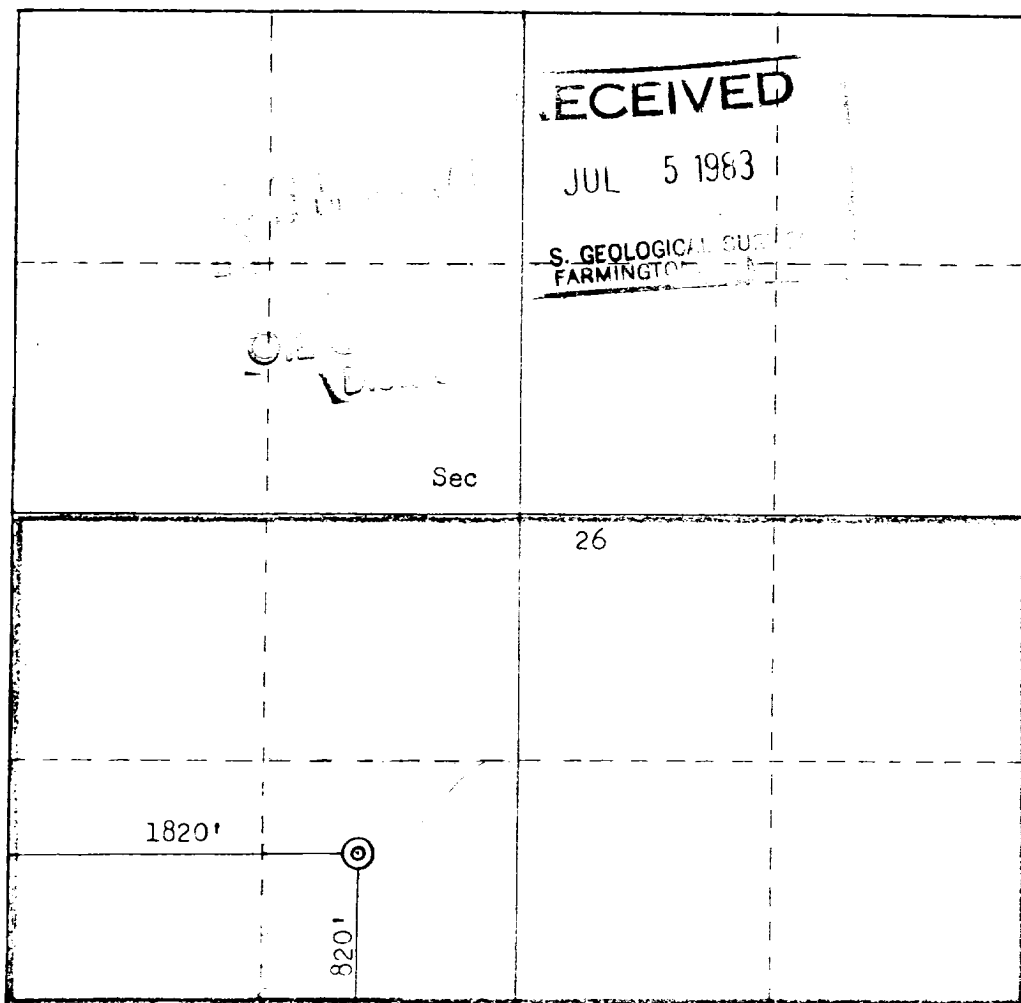
Operator Amoco Production Company			Lease Rosa Unit		Well No. 99
Unit Letter N	Section 26	Township 31N	Range 6W	County Rio Arriba	
Actual Footage Location of Well: 820 feet from the South line and 1820 feet from the West line					
Ground Level Elev. 6436	Producing Formation Dakota/Gallup		Pool Basin Dakota/Undes. Gallup		Dedicated Acreage: 320/40 Acres

1. Outline the acreage dedicated to the subject well by colored pencil or hachure marks on the plat below.
2. If more than one lease is dedicated to the well, outline each and identify the ownership thereof (both as to working interest and royalty).
3. If more than one lease of different ownership is dedicated to the well, have the interests of all owners been consolidated by communitization, unitization, force-pooling, etc?

☐ Yes ☐ No If answer is "yes," type of consolidation _____

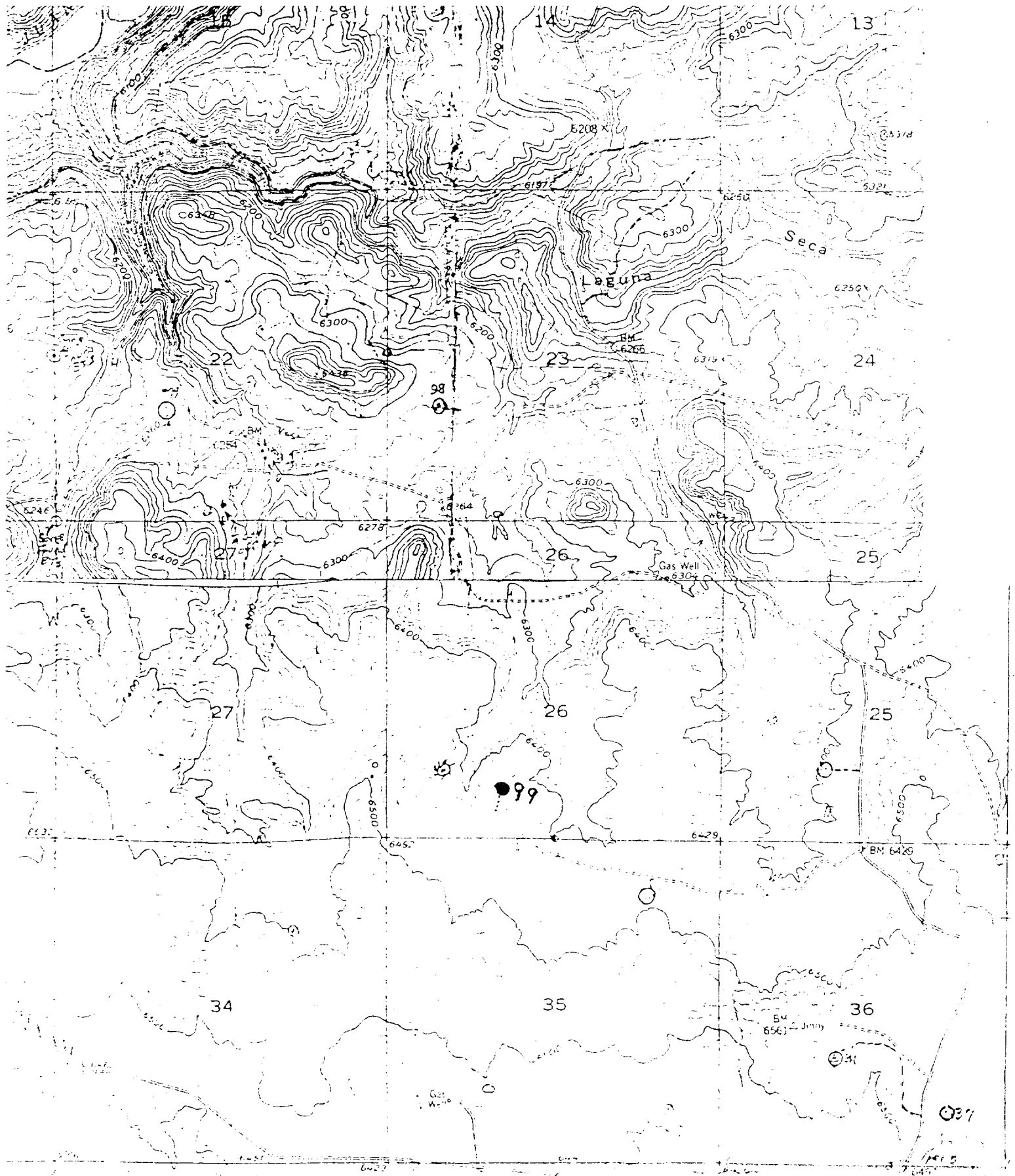
If answer is "no," list the owners and tract descriptions which have actually been consolidated. (Use reverse side of this form if necessary.) _____

No allowable will be assigned to the well until all interests have been consolidated (by communitization, unitization, forced-pooling, or otherwise) or until a non-standard unit, eliminating such interests, has been approved by the Commission.



Scale: 1"=1000'

CERTIFICATION	
I hereby certify that the information contained herein is true and complete to the best of my knowledge and belief.	
Name	D. H. Shoemaker
Position	District Engineer
Company	Amoco Production Company
Date	JUL 1 1983
I hereby certify that the well location shown on this plat was plotted from field notes of actual surveys made by me or under my supervision, and that the same is true and correct to the best of my knowledge and belief.	
Date Surveyed	June 15, 1983
Registered Professional Engineer and Land Surveyor	Fred B. Kert Jr.
Certificate No.	3950



Vicinity map for
Amoco Production Co. Rosa Unit #99
820'FS 1820'FW Sec 26-31N-6W
Rio Arriba County New Mexico