

UNITED STATES
DEPARTMENT OF THE INTERIOR
GEOLOGICAL SURVEY

APPLICATION FOR PERMIT TO DRILL, DEEPEN, OR PLUG BACK

1a. TYPE OF WORK

DRILL ☒DEEPEN ☐PLUG BACK ☐

b. TYPE OF WELL

OIL
WELL ☐GAS
WELL ☒

OTHER

SINGLE
ZONE ☐MULTIPLE
ZONE ☒

2. NAME OF OPERATOR

Amoco Production Company

3. ADDRESS OF OPERATOR

501 Airport Drive, Farmington, N.M. 87401

4. LOCATION OF WELL (Report location clearly and in accordance with any State requirements.)

At surface

1650' FSL x 990' FEL

At proposed prod. zone same

14. DISTANCE IN MILES AND DIRECTION FROM NEAREST TOWN OR POST OFFICE

25 miles NE of Gobernador, N.M.

15. DISTANCE FROM PROPOSED*

LOCATION TO NEAREST
PROPERTY OR LEASE LINE, FT.
(Also to nearest drlg. unit line, if any)

990'

16. NO. OF ACRES IN LEASE

2560

17. NO. OF ACRES ASSIGNED

TO THIS WELL
160/320

18. DISTANCE FROM PROPOSED LOCATION*

TO NEAREST WELL, DRILLING, COMPLETED,
OR APPLIED FOR, ON THIS LEASE, FT.

36493'

19. PROPOSED DEPTH

6100'

20. ROTARY OR CABLE TOOLS

Rotary

21. ELEVATIONS (Show whether DF, RT, GR, etc.)

7187' GL

DRILLING OPERATIONS AUTHORIZED ARE
SUBJECT TO COMPLIANCE WITH ATTACHED

22. APPROX. DATE WORK WILL START*

As soon as permitted

23.

PROPOSED CASING AND CEMENTING PROGRAM

This action is subject to administrative
appeal pursuant to 30 CFR 290.

| SIZE OF HOLE | SIZE OF CASING | WEIGHT PER FOOT | SETTING DEPTH | QUANTITY OF CEMENT |
|--------------|----------------|-----------------|---------------|--|
| 17 1/2" | 13 3/8" | 48# H40 | 300 | 378 cu ft class B w/2% Ca Cl ₂ |
| 7 7/8" | 5 1/2" | 14 & 15.5 #K55 | 6100 | 1st stage: 378 cu ft class B 50:50 POZ cement. Tail in with 148 cu ft class B neat cement. 2nd stage: 690 cu ft Class B 65:35 POZ cement. Tail in with 148 cu ft class B neat cement. |

Amoco proposes to drill the above well to further develop the Gallup-Dakota reservoirs. The well will be drilled to the surface casing point using native mud. The well will then be drilled to TD with a low solids non-dispersed mud system. Completion design will be based on open hole logs. Copies of all logs will be filed upon completion. Amoco's standard blowout prevention will be employed; see attached drawing for blowout preventer design.

Upon completion, the well location will be cleaned and the reserve pit filled and leveled.

IN ABOVE SPACE DESCRIBE PROPOSED PROGRAM: If proposal is to deepen or plug back, give data on present productive zone and proposed new productive zone. If proposal is to drill or deepen directionally, give pertinent data on subsurface locations and measured and true vertical depths. Give blowout preventer program, if any.

24.

Original Signed By

SIGNED

D. H. SHOEMAKER

TITLE District Engineer

DATE Sept. 28, 1983

(This space for Federal or State office use)

PERMIT NO.

APPROVED BY

CONDITIONS OF APPROVAL, IF ANY:

TITLE

NOV 9 - 1983

NM OIL CON. DIV.
DIST. 3APPROVED
AS AMENDED

DATE

NOV 09 1983

M. MILLERBACH

AREA MANAGER

All distances must be from the outer boundaries of the Section.

| | | | | | |
|---|---|------------------------|---|-----------------------------|--|
| Operator AMOCO PRODUCTION COMPANY | | | Lease JICARILLA TRIBAL 525 | | Well No. 1 |
| Unit Letter I | Section 15 | Township 31N | Range 2W | County Rio Arriba | |
| Actual Footage Location of Well: 1650 feet from the South line and 990 feet from the East line | | | | | |
| Ground Level Elev: 7187 | Producing Formation Gallup-Dakota | | Pool Undesignated Gallup-Basin Dakota | | Dedicated Acreage: 160/320 Acres |

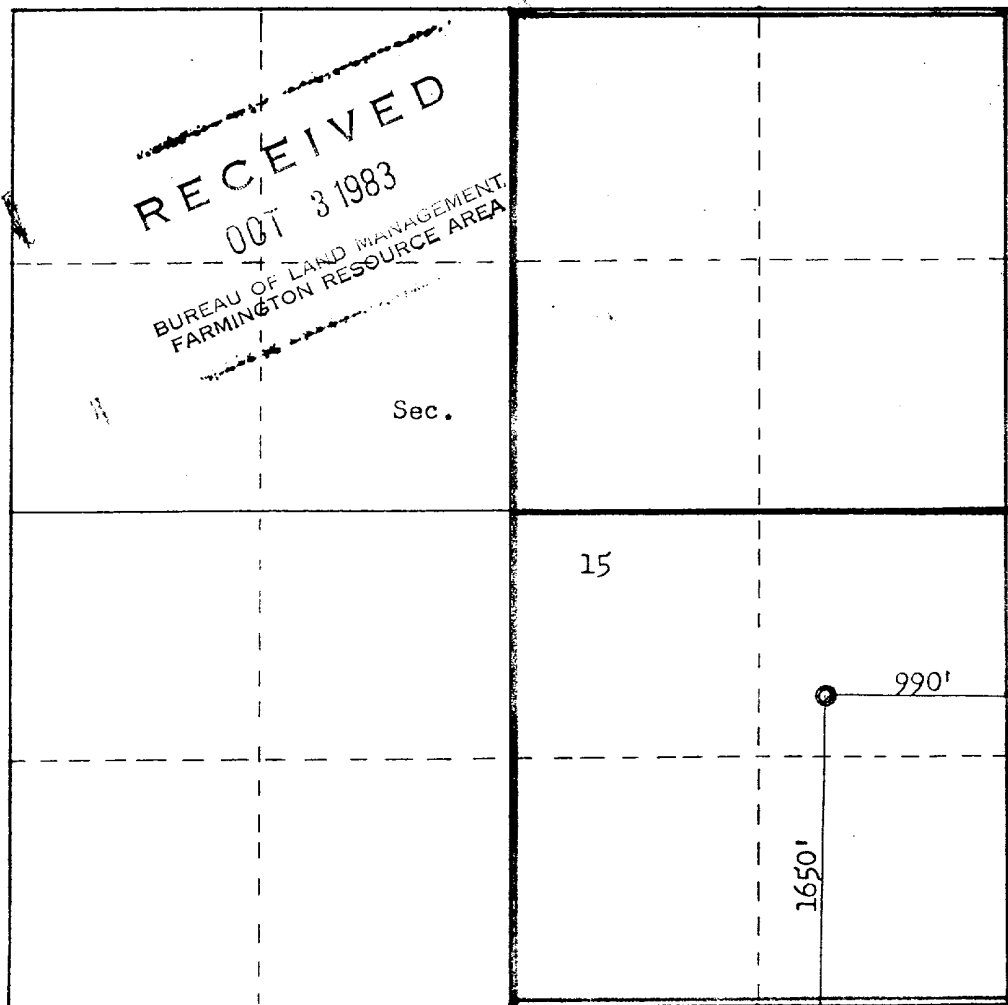
1. Outline the acreage dedicated to the subject well by colored pencil or hachure marks on the plat below.
2. If more than one lease is dedicated to the well, outline each and identify the ownership thereof (both as to working interest and royalty).
3. If more than one lease of different ownership is dedicated to the well, have the interests of all owners been consolidated by communitization, unitization, force-pooling, etc?

☐ Yes ☐ No If answer is "yes," type of consolidation _____

If answer is "no," list the owners and tract descriptions which have actually been consolidated. (Use reverse side of this form if necessary.) _____

No allowable will be assigned to the well until all interests have been consolidated (by communitization, unitization, forced-pooling, or otherwise) or until a non-standard unit, eliminating such interests, has been approved by the Commission.

RECEIVED
NOV 9 - 1983
OIL CON. DIV.
DIST. 6



Scale: 1"=1000'

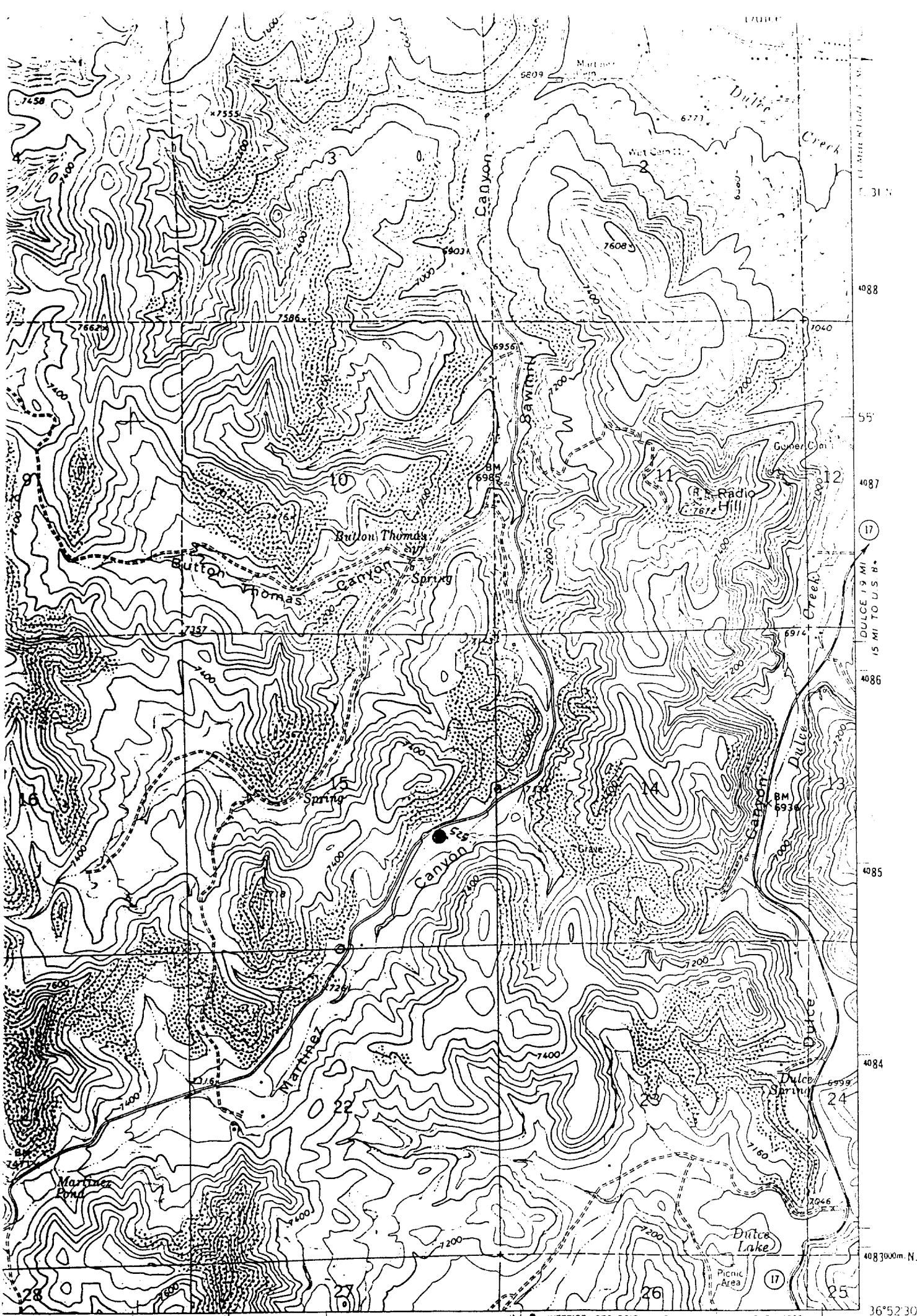
CERTIFICATION

I hereby certify that the information contained herein is true and complete to the best of my knowledge and belief.

Name
Dale H. Shoemaker
Position
District Engineer
Company
Amoco Production Co.
Date
9-28-83

I hereby certify that the well location shown on this plat was plotted from field notes of actual surveys made by me or under my supervision, and that the same is true and correct to the best of my knowledge and belief.

Date Surveyed
September 1, 1983
Registered Professional Engineer and Land Surveyor
Fred B. Kerr Jr.
Certificate No. **3950**



1 MILE
7000 FEET
4000 FEET
4000 FEET

Vicinity Map for
AMOCO PRODUCTION COMPANY #1 JICARILLA TRIBAL 525
1650'FSL 990'FEL Sec. 15-T31N-R2W
RIO ARriba COUNTY, NEW MEXICO

QUADRANGLE LOCATION

ROAD CLASSIFICATION
Medium-duty _____ Light-duty _____

WIRT CANYON, N. MEX.

1963

IGTON, D. C. 20242
EQUEST

AMS 4512 I NE-SERIES 7500