

UNITED STATES
DEPARTMENT OF THE INTERIOR
GEOLOGICAL SURVEY

APPLICATION FOR PERMIT TO DRILL, DEEPEN, OR PLUG BACK

1a. TYPE OF WORK

DRILL ☒DEEPEN ☐PLUG BACK ☐

b. TYPE OF WELL

OIL
WELL ☐GAS
WELL ☒

OTHER

2. NAME OF OPERATOR

Amoco Production Company

3. ADDRESS OF OPERATOR

501 Airport Drive, Farmington, N.M. 87401

4. LOCATION OF WELL (Report location clearly and in accordance with any State requirements.)*

At surface

890' FSL x 1850' FWL

At proposed prod. zone same

14. DISTANCE IN MILES AND DIRECTION FROM NEAREST TOWN OR POST OFFICE*

14 miles NW of Gobernador, N.M.

15. DISTANCE FROM PROPOSED*

LOCATION TO NEAREST
PROPERTY OR LEASE LINE, FT.
(Also to nearest drlg. unit line, if any)

890'

18. DISTANCE FROM PROPOSED LOCATION*
TO NEAREST WELL, DRILLING, COMPLETED,
OR APPLIED FOR, ON THIS LEASE, FT.

5289'

21. ELEVATIONS (Show whether DF, RT, GR, etc.)

6387' GL

DRILLING OPERATIONS ARE
SUBJECT TO COMPLETION WITH ATTACHED

PROPOSED CASING AND CEMENTING PROGRAM

23.

SIZE OF HOLE	SIZE OF CASING	WEIGHT PER FOOT	SETTING DEPTH	QUANTITY OF CEMENT
17 1/2"	13 3/8"	48# H40	400'	834 cu ft Class G w/2% CaCl ₂ .
7 7/8"	4 1/2"	11.6# K55	8050'	Circ. to surf.

1) 765 cu ft Class G 50:50
POZ cement. 2) 2023 cu ft
Class G 65:35 POZ cement. Tail
in both stages with 118 cu ft
Class G neat.

DV tool set at 5770'.

Amoco proposes to drill the above well to further develop the Basin Dakota and Undes. Gallup reservoirs. The well will be drilled to the surface casing point using native mud. The well will then be drilled to TD with a low solids non-dispersed mud system. Completion design will be based on open hole logs. Copies of all logs will be filed upon completion. Amoco's standard blowout prevention will be employed; see attached drawing for blowout preventer design.

Upon completion, the well location will be cleaned and the reserve pit filled and leveled.

Gas produced from this well is not dedicated.

IN ABOVE SPACE DESCRIBE PROPOSED PROGRAM: If proposal is to deepen or plug back, give data on present productive zone and proposed new productive zone. If proposal is to drill or deepen directionally, give pertinent data on subsurface locations and measured and true vertical depths. Give blowout preventer program, if any.

24.

SIGNED

TITLE Dist. Adm. Supervisor

DATE 10-21-83

(This space for Federal or State office use)

PERMIT NO.

APPROVAL DATE

APPROVED BY

TITLE

CONDITIONS OF APPROVAL, IF ANY:

APPROVED

AS AMENDED

DEC 13 1983

AREA MANAGER
FARMINGTON RESOURCE AREA

NMOC

OIL CONSERVATION DIVISION

P.O. BOX 2088

SANTA FE, NEW MEXICO 87501

Form C-107
Revised 10-1-78STATE OF NEW MEXICO
ENERGY AND MINERALS DEPARTMENT

All distances must be from the outer boundaries of the Section.

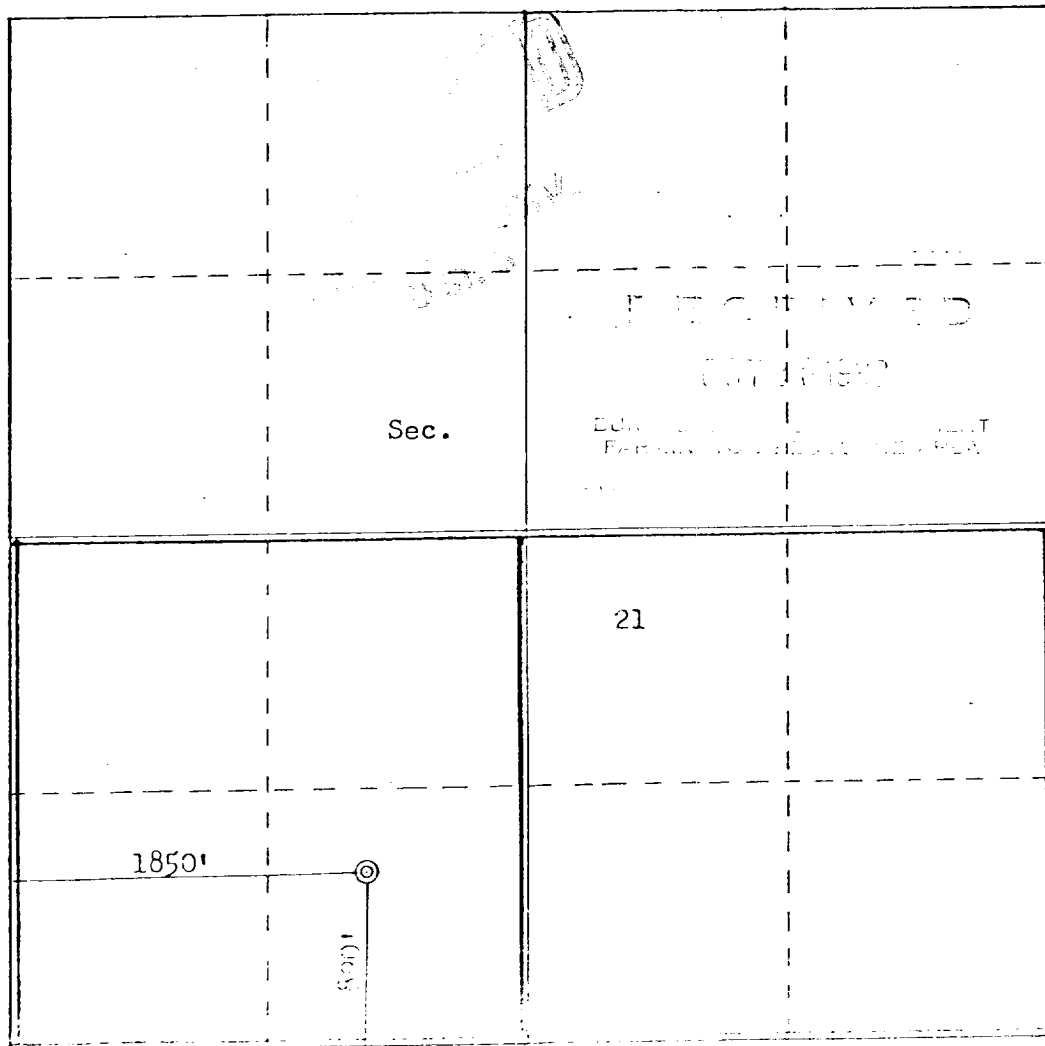
Operator AMOCO PRODUCTION COMPANY			Lease Rosa Unit		Well No. 100
Unit Letter N	Section 21	Township 31N	Range 6W	County Rio Arriba	
Actual Footage Location of Well: 890 feet from the South line and 1850 feet from the West line					
Ground Level Elev. 6387	Producing Formation Dakota-Gallup		Pool Basin Dakota-Undes. Gallup		Dedicated Acreage: 320/160 Acres

1. Outline the acreage dedicated to the subject well by colored pencil or hatchure marks on the plat below.
2. If more than one lease is dedicated to the well, outline each and identify the ownership thereof (both as to working interest and royalty).
3. If more than one lease of different ownership is dedicated to the well, have the interests of all owners been consolidated by communitization, unitization, force-pooling, etc?

☐ Yes ☐ No If answer is "yes," type of consolidation _____

If answer is "no," list the owners and tract descriptions which have actually been consolidated. (Use reverse side of this form if necessary.) _____

No allowable will be assigned to the well until all interests have been consolidated (by communitization, unitization, forced-pooling, or otherwise) or until a non-standard unit, eliminating such interests, has been approved by the Commission.



CERTIFICATION

I hereby certify that the information contained herein is true and complete to the best of my knowledge and belief.

Darrell D. Lawson

Name

Darrell D. Lawson

Position

District Administrative

Company

Supervisor

Amoco Production Co.

Date

October 20, 1983

I hereby certify that the well location shown on this plat was plotted from field notes of actual surveys made by me or under my supervision, and that the same is true and correct to the best of my knowledge and belief.

Date Surveyed

October 2, 1983

Registered Professional Engineer and Land Surveyor

Fred B. [Signature]

Fred B. [Signature]

3950