

NEW MEXICO OIL CONSERVATION COMMISSION
WELL LOCATION AND ACREAGE DEDICATION PLAT

Form C-102
Supersedes C-128
Effective 1-1-65

All distances must be from the outer boundaries of the Section.

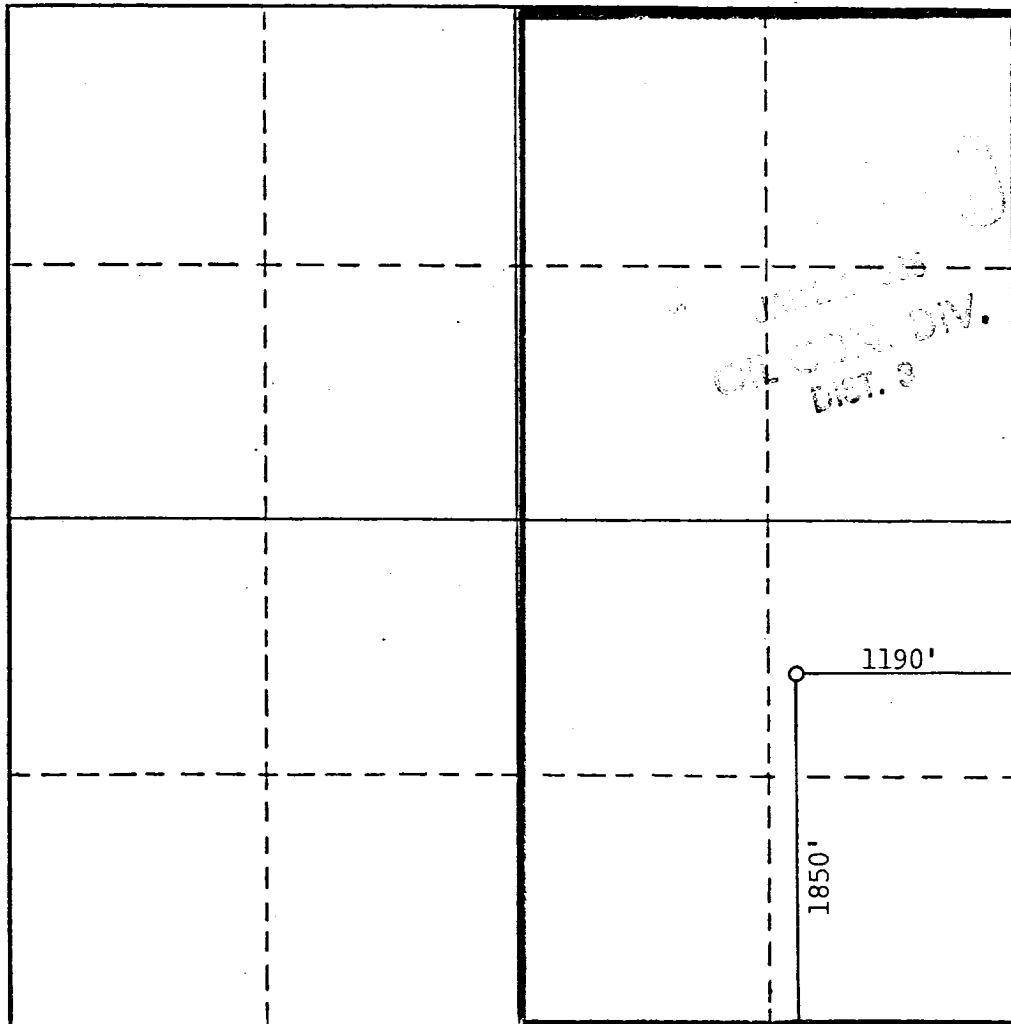
Operator BLACKWOOD & NICHOLS			Lease NORTHEAST BLANCO UNIT		Well No. 302
Unit Letter I	Section 30	Township 31 North	Range 6W., N.M.P.M.	County Rio Arriba	
Actual Footage Location of Well: 1850 feet from the south line and 1190 feet from the east line					
Ground Level Elev: 6471 U.G.	Producing Formation Dakota		Pool Basin Dakota		Dedicated Acreage: 320 Acres

1. Outline the acreage dedicated to the subject well by colored pencil or hachure marks on the plat below.
2. If more than one lease is dedicated to the well, outline each and identify the ownership thereof (both as to working interest and royalty).
3. If more than one lease of different ownership is dedicated to the well, have the interests of all owners been consolidated by communitization, unitization, force-pooling, etc?

☐ Yes ☐ No If answer is "yes," type of consolidation Unitization

If answer is "no," list the owners and tract descriptions which have actually been consolidated. (Use reverse side of this form if necessary.) _____

No allowable will be assigned to the well until all interests have been consolidated (by communitization, unitization, forced-pooling, or otherwise) or until a non-standard unit, eliminating such interests, has been approved by the Commission.



CERTIFICATION

I hereby certify that the information contained herein is true and complete to the best of my knowledge and belief.

Name *DeLasso*
Position
Field Superintendent
Company
Blackwood & Nichols Co., Ltd.
Date
August 14, 1984

I hereby certify that the well location shown on this plat was plotted from field notes of actual surveys made by me or under my supervision, and that the same is true and correct to the best of my knowledge and belief.

Date Surveyed
August 8, 1984
Registered Professional Engineer and/or Land Surveyor
Allison L. Kroeger
Allison L. Kroeger, RLS

Certificate No.
7922

