



STATE OF NEW MEXICO
ENERGY AND MINERALS DEPARTMENT
OIL CONSERVATION DIVISION

August 19, 1984

TONEY ANAYA
GOVERNOR

POST OFFICE BOX 2088
STATE LAND OFFICE BUILDING
SANTA FE, NEW MEXICO 87501
(505) 827-5800

Amoco Production Company
Petroleum Center Building
501 Airport Drive
Farmington, New Mexico 87401

Attention: W. J. Holcomb

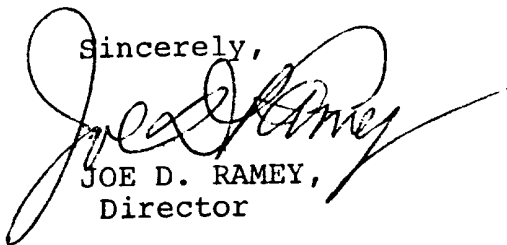
Administrative Order NSL-1867

Gentlemen:

Reference is made to your application for a non-standard location for your Rosa Unit Well No. 107 to be located 2160 feet from the South line and 1850 feet from the West line of Section 4, Township 31 North, Range 5 West, NMPM, Basin Dakota and Undesignated Gallup Pools, Rio Arriba County, New Mexico. The S/2 of Section 4 and the SW/4 of Section 4 are to be dedicated to both pools.

By authority granted me under the provisions of Rule 104 FI, the above-described unorthodox location is hereby approved.

Sincerely,


JOE D. RAMEY,
Director

JDR/RLS/dr

cc: Oil Conservation Division - Aztec
Oil & Gas Engineering Committee - Hobbs

RECEIVED
AUG 21 1984
OIL CON. DIV.
DIST. 3

July 25, 1984

Mr. Joe D. Ramey
New Mexico Conservation Division
P. O. Box 2088
Santa Fe, NM 87501

File: DDL-684-400.1

Application for Unorthodox Location
Rosa Unit No. 107
Basin Dakota/Undesignated Gallup Field
Rio Arriba County, New Mexico

Amoco Production Company hereby requests approval of an unorthodox location for the Rosa Unit No. 107. The proposed location is 2160' FSL x 1850' FWL of Section 4, T31N, R5W, Rio Arriba County, New Mexico.

This well was staked in the unorthodox location indicated above because there was a steep rock face to the north and east. There was also deep drainage to the south.

There are no offset lease holders as shown on the attached nine-section plat.

Yours very truly,

Original Signed

W. J. Holcomb *by DHS*

KRJ/ct

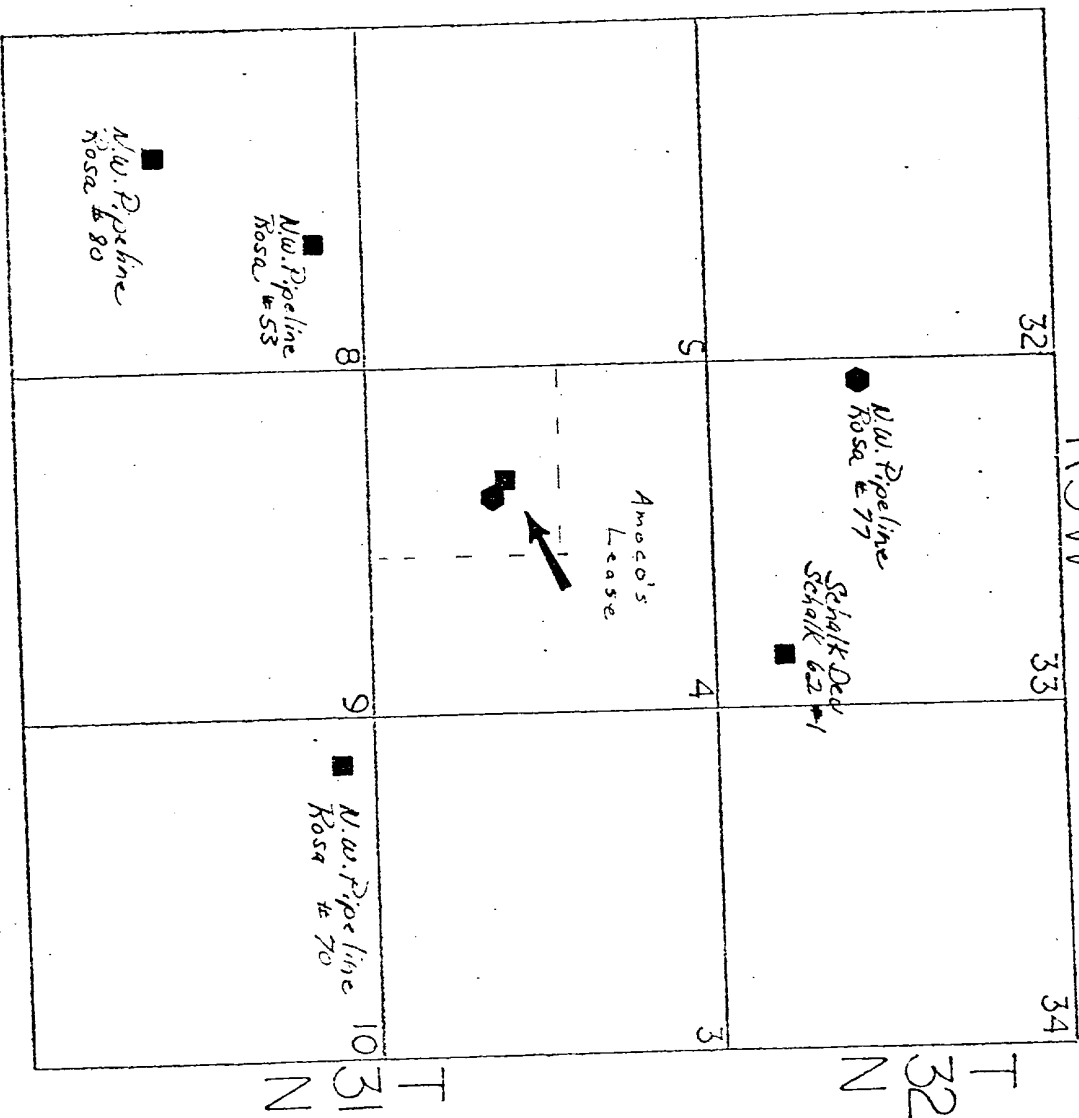
Attachments

✓ cc: Mr. Ernie Bush
New Mexico Oil Conservation Division
1000 Rio Brazos Road
Aztec, NM 87410

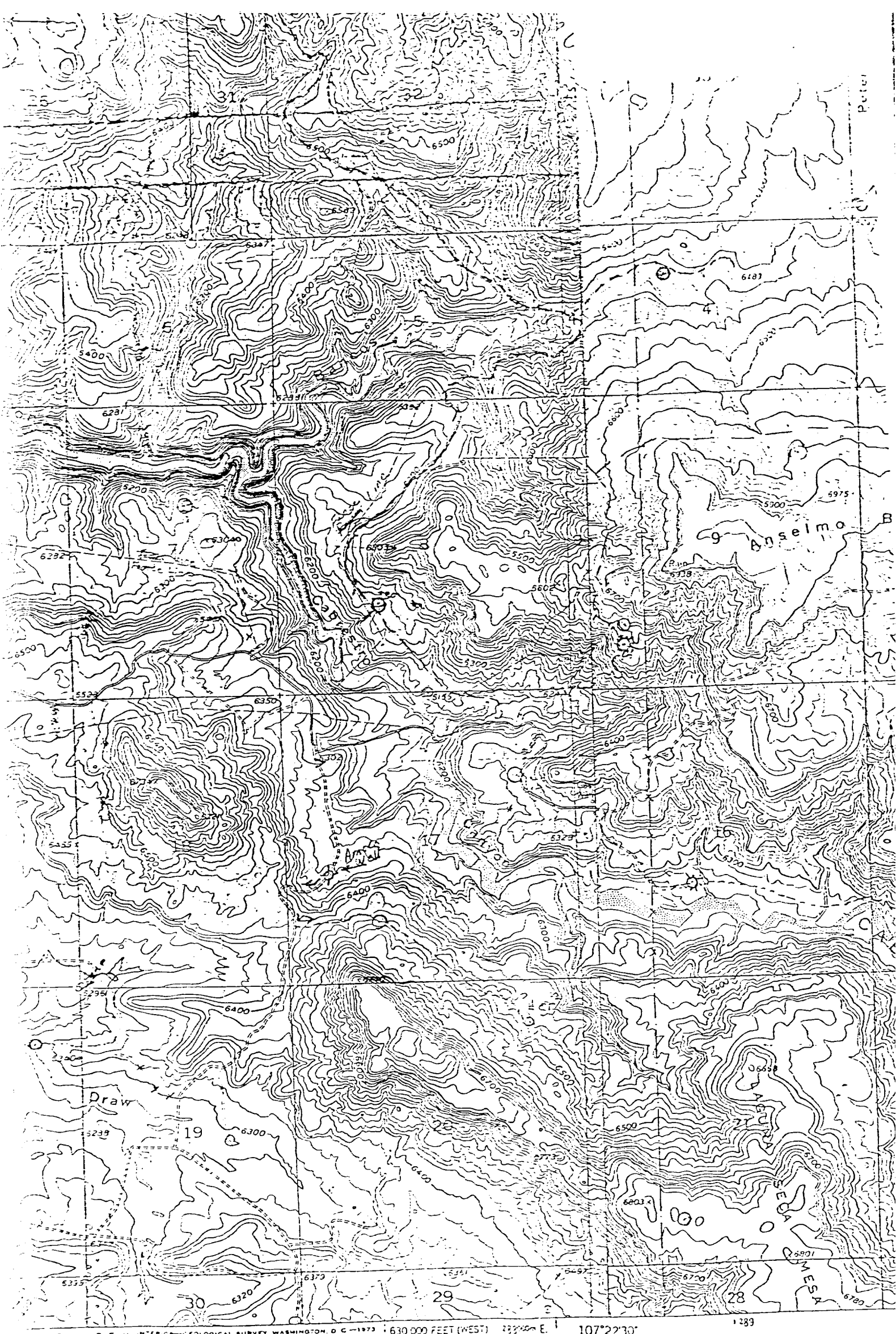
RECEIVED
JUL 27 1984
OIL CON. DIV.
DIST. 3

AM17

R5W



■ BASIN DAKOTA
 ◆ UNDES GALLUP



Vicinity Map for
 AMOCO PRODUCTION COMPANY #107 ROSA UNIT
 2160' FSL 1850' FWL Sec. 4-T31N-R5W

1. edited, and published by the Geo
 1. GCS and USC2GS
 by photogrammetric methods from aerial
 photography taken in 1952. F4115-100-105