

UNITED STATES
DEPARTMENT OF THE INTERIOR
BUREAU OF LAND MANAGEMENT

APPLICATION FOR PERMIT TO DRILL, DEEPEN, OR PLUG BACK

1a. TYPE OF WORK

DRILL ☒

DEEPEN ☐

PLUG BACK ☐

b. TYPE OF WELL

OIL
WELL ☐

GAS
WELL ☒

OTHER

SINGLE
ZONE ☒

MULTIPLE
ZONE ☐

2. NAME OF OPERATOR

Northwest Pipeline Corporation

3. ADDRESS OF OPERATOR

3539 E. 30th Street - Farmington, NM 87401

4. LOCATION OF WELL (Report location clearly and in accordance with any State requirements.)

At surface

890' FSL & 1215' FWL SW/4 SW/4

At proposed prod. zone

Same

14. DISTANCE IN MILES AND DIRECTION FROM NEAREST TOWN OR POST OFFICE*

Approximately 20 miles to Gobernador

15. DISTANCE FROM PROPOSED

LOCATION TO NEAREST
PROPERTY OR LEASE LINE, FT.
(Also to nearest drlg. unit line, if any)

890'

16. NO. OF ACRES IN LEASE

NA 2560

17. NO. OF ACRES ASSIGNED
TO THIS WELL

320

18. DISTANCE FROM PROPOSED LOCATION*

TO NEAREST WELL, DRILLING, COMPLETED,
OR APPLIED FOR, ON THIS LEASE, FT.

+ 3000'

19. PROPOSED DEPTH

3132'

20. ROTARY OR CABLE TOOLS

Rotary

21. ELEVATIONS (Show whether DF, RT, GR, etc.)

6300' GR

DRILLING OPERATIONS AUTHORIZED ARE
SUBJECT TO COMPLIANCE WITH ATTACHED

22. APPROX. DATE WORK WILL START*

March 1, 1989

23. PROPOSED PROGRAM

This action is subject to technical and
procedural review pursuant to 43 CFR 3165.3
and appeal pursuant to 43 CFR 3165.4.

SIZE OF HOLE	SIZE OF CASING	WEIGHT PER FOOT	SETTING DEPTH
12-1/4"	9-5/8"	32#	200'
8-3/4"	7"	20#	2953'
6-1/4"	5-1/2"	23#	2783'-3132'

125 cu. ft.

150 cu. ft.

Open hole completion

The W/2 of Section 23 is dedicated to this well.

RECEIVED
MAIL ROOM

68 DEC 20 AM 11:41

ARMINGTON RESOURCE AREA
FARMINGTON, NEW MEXICO

RECEIVED
APR 18 1989
OIL CON. DIV
DIST. 2

IN ABOVE SPACE DESCRIBE PROPOSED PROGRAM: If proposal is to deepen or plug back, give data on present productive zone and proposed new productive zone. If proposal is to drill or deepen directionally, give pertinent data on subsurface locations and measured and true vertical depths. Give blowout preventer program, if any.

24.

SIGNED

Mike Turnbaugh

TITLE Senior Engineer

DATE 12-19-88

(This space for Federal or State office use)

PERMIT NO.

APPROVAL DATE

APPROVED BY

TITLE

DATE

CONDITIONS OF APPROVAL, IF ANY:

ch-1

NMOCC

*See Instructions On Reverse Side

OIL CONSERVATION DIVISION

P. O. BOX 2088

NORTHWEST PIPELINE CORPORATION Form C-102
Revised 10-1-78STATE OF NEW MEXICO
ENERGY AND MINERALS DEPARTMENT

SANTA FE, NEW MEXICO 87501

All distances must be from the outer boundaries of the Section.

OCT 27 1988

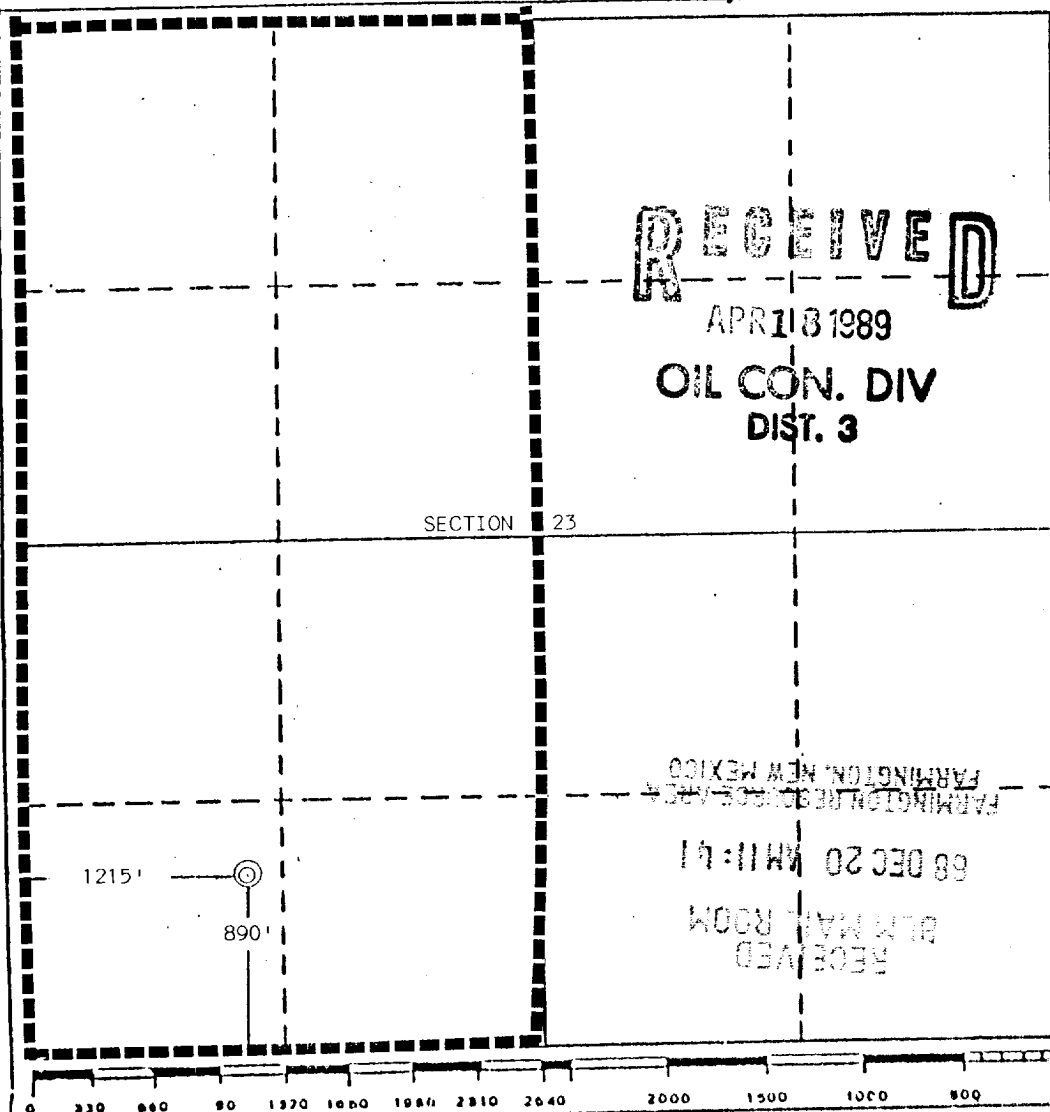
Operator Northwest Pipeline Corporation		Lease Rosa Unit		Well No. 202
Unit Letter M	Section 23	Township 31 North	Range 6 West	County PROBATION AND DECLINE Rio Arriba
Actual Footage Location of Well:				
890	feet from the	South	line and	1215
			feet from the	West
Ground Level Elev. 6300	Producing Formation Fruitland	Pool Basin Fruitland Pool	Dedicated Acreage: 320 Acres	

1. Outline the acreage dedicated to the subject well by colored pencil or hatchure marks on the plat below.
2. If more than one lease is dedicated to the well, outline each and identify the ownership thereof (both as to working interest and royalty).
3. If more than one lease of different ownership is dedicated to the well, have the interests of all owners been consolidated by communitization, unitization, force-pooling, etc?

☒ Yes ☐ No If answer is "yes," type of consolidation unitization

If answer is "no," list the owners and tract descriptions which have actually been consolidated. (Use reverse side of this form if necessary.) _____

No allowable will be assigned to the well until all interests have been consolidated (by communitization, unitization, forced-pooling, or otherwise) or until a non-standard unit, eliminating such interests, has been approved by the Division.



CERTIFICATION

I hereby certify that the information contained herein is true and complete to the best of my knowledge and belief.

Mike Turnbaugh
Name

Mike Turnbaugh
Position

Senior Engineer
Company

Northwest Pipeline Corp.
Date

10-31-88

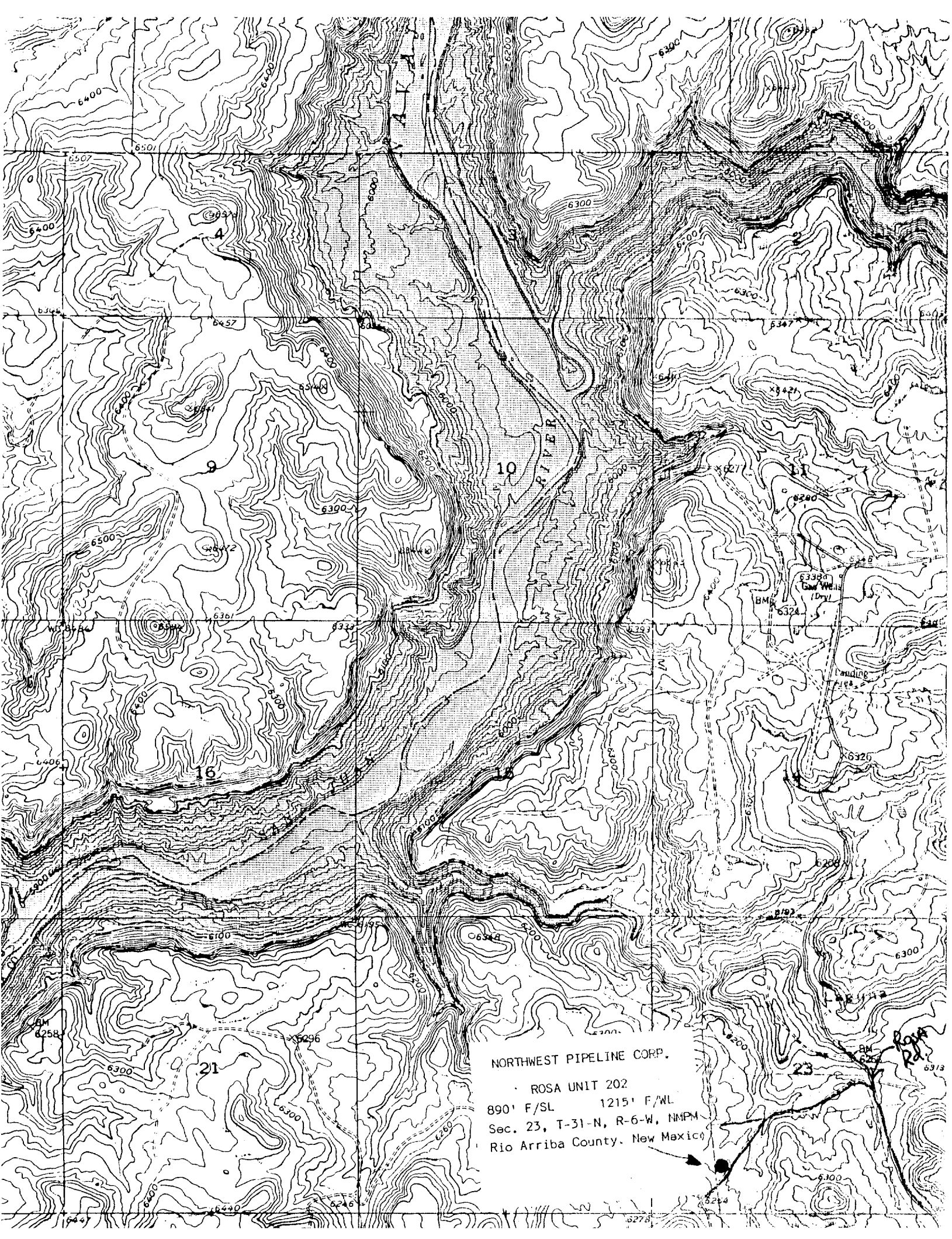
I hereby certify that the well location shown on this plat was plotted from field notes of actual surveys made by me or under my supervision, and that the same is true and correct to the best of my knowledge and belief.

Date Surveyed
October 10, 1988

Registered Professional Engineer
and/or Land Surveyor

Edgar L. Risenhoover
Certificate No. 5979

Edgar L. Risenhoover, L.S.



NORTHWEST PIPELINE CORP.

ROSA UNIT 202
890' F/SL 1215' F/WL
Sec. 23, T-31-N, R-6-W, NMPM
Rio Arriba County, New Mexico