

UNITED STATES
DEPARTMENT OF THE INTERIOR
BUREAU OF LAND MANAGEMENT

RECEIVED
MAY 15 1990
PM 3:09

SUNDRY NOTICES AND REPORTS ON WELLS

1. TYPE OF WELL GAS		5. LEASE NUMBER SF-078771	
2. OPERATOR <i>NW Pipeline</i> MERIDIAN OIL INC.		6. IF INDIAN, ALL. OR TRIBE NAME	
3. ADDRESS & PHONE NO. OF OPERATOR P O BOX 4289 FARMINGTON, NM 87499		7. UNIT AGREEMENT NAME ROSA UNIT	
4. LOCATION OF WELL 965' FSL 1470' FWL		8. FARM OR LEASE NAME ROSA UNIT	
		9. WELL NO. 202	
		10. FIELD, POOL, OR WILDCAT BASIN FRUITLAND COAL	
		11. SEC. T. R. M OR BLK. SEC. 23 T31N R06W NMPM	
14. PERMIT NO.	15. ELEVATIONS 6235' GL	12. COUNTY RIO ARRIBA	13. STATE NM
16. SUBSEQUENT REPORT OF:			
17. Describe proposed or completed operations			

Attached are the revised BOPE diagrams for the subject well.

RECEIVED

JUN 6 1990

OIL CON. DIV.
DIST. 3

18. AUTHORIZED BY: *Ken Townsend*
REGULATORY AFFAIRS

NOTE: THIS FORMAT IS ISSUED IN LIEU OF US BLM FORM 3160-5.

=====

(This space for Federal or State office use)

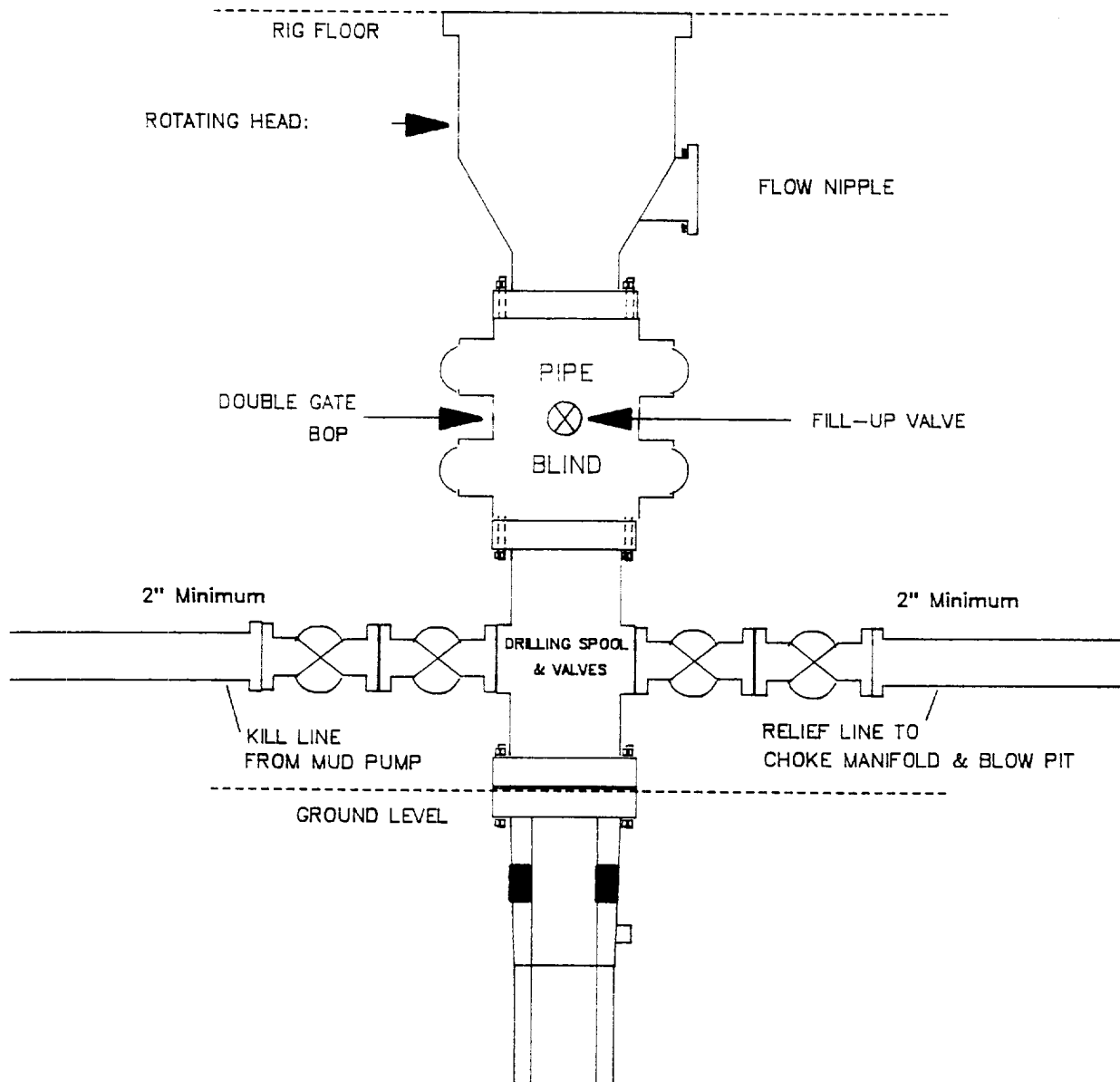
APPROVED BY _____
CONDITION OF APPROVAL, IF ANY:

TITLE _____

NMOCD

APPROVED DATE
MAY 23 1990
Ken Townsend
DATE FOR AREA MANAGER FARMINGTON RESOURCE AREA

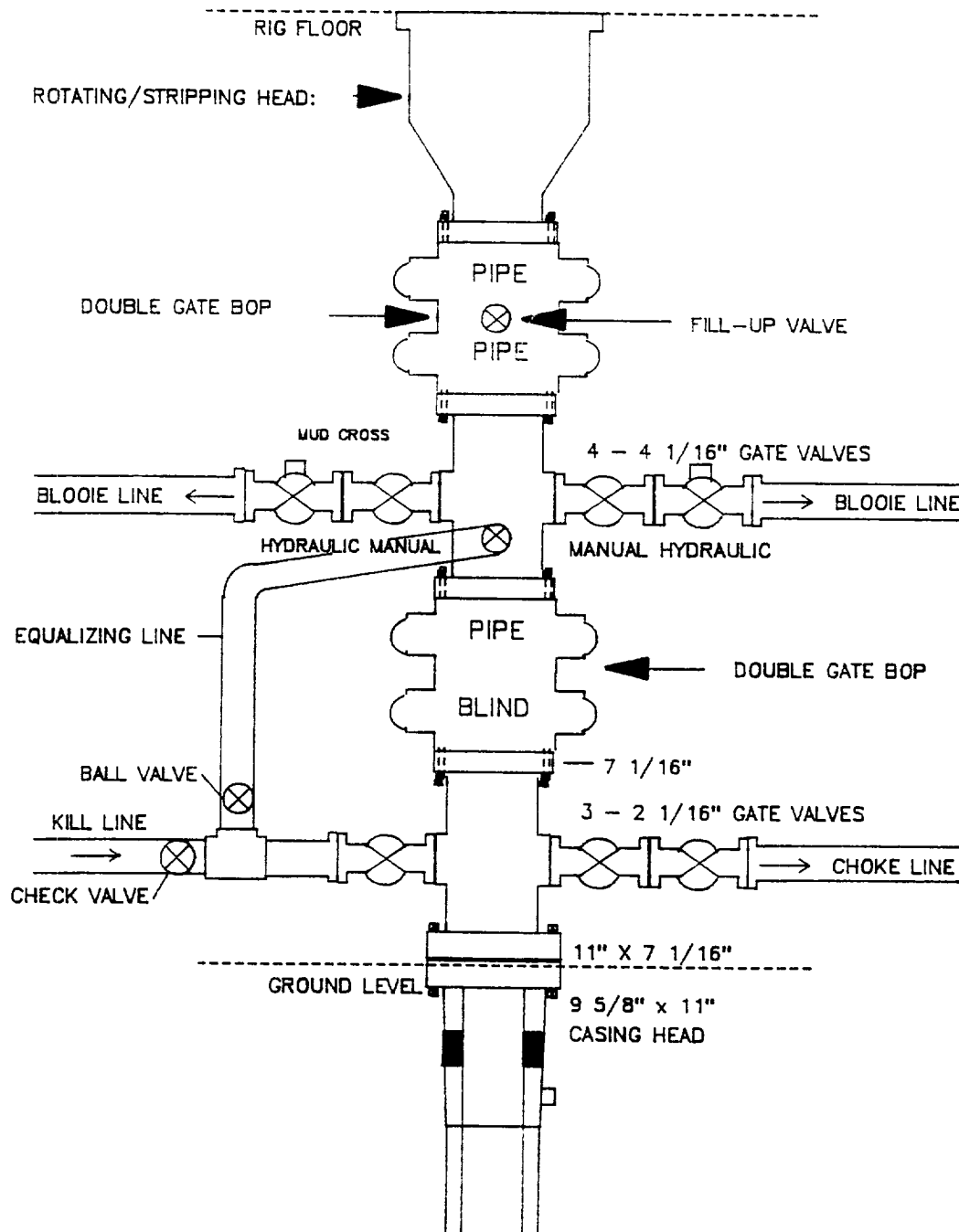
MERIDIAN OIL INC.
Drilling Rig
BOP Configuration



Minimum BOP installation for a typical Fruitland Coal well from surface to Intermediate casing point. 11" Bore (10" Nominal), 2000psi minimum working pressure double gate BOP to be equipped with blind and pipe rams. A Schaffer Type 50 equivalent rotating head to be installed on the top of BOP. All equipment is 2000psi working pressure/or greater.

Figure #1

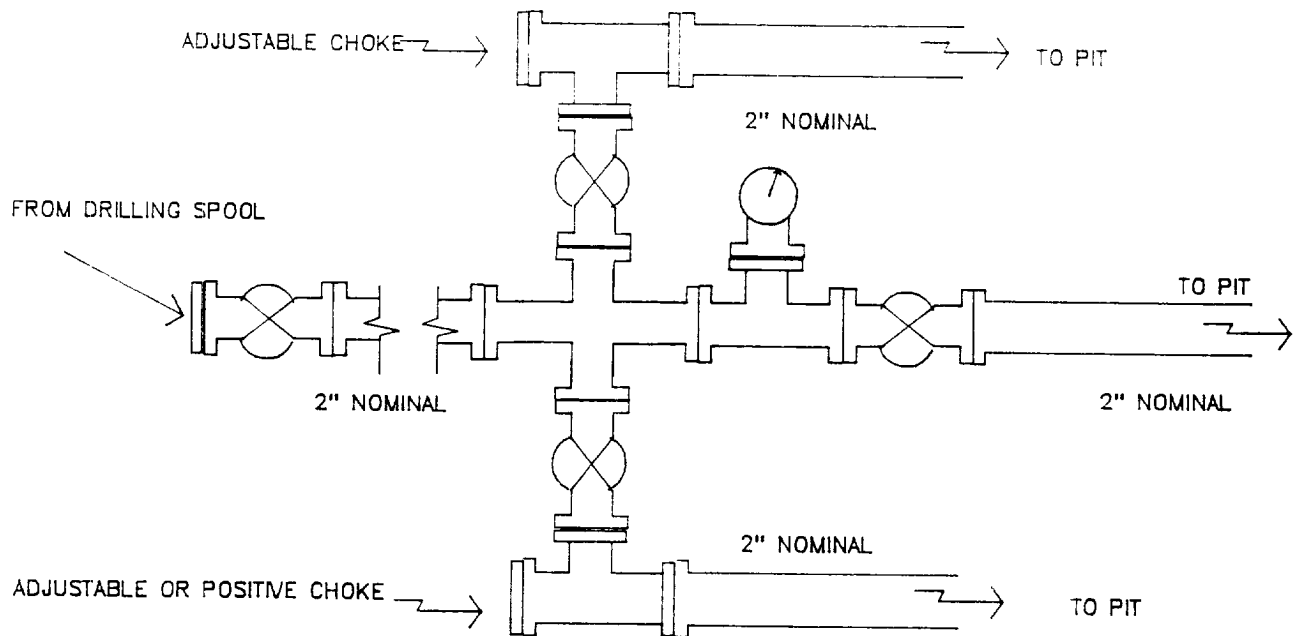
MERIDIAN OIL INC.
Completion Rig
BOP Configuration



Minimum BOP installation for a typical open-hole Fruitland Coal well from intermediate TD to TD. 7 1/16" Bore (6" Nominal), 2000psi working pressure/ or greater double stack double gate BOP equipped with three pipe and one blind ram.

Figure #2

MERIDIAN OIL INC.
Typical Fruitland Coal Well
Choke Manifold Configuration



Minimum choke manifold installation for a typical Fruitland Coal well from surface to Total Depth. 2", 2000psi working pressure equipment with two chokes.

Figure #3