

Submit to Appropriate  
District Office  
State Lease - 6 copies  
Fee Lease - 5 copies

State of New Mexico  
Energy, Minerals and Natural Resources Department

Form C-101  
Revised 1-1-89

OIL CONSERVATION DIVISION

DISTRICT I  
P.O. Box 1980, Hobbs, NM 88240

DISTRICT II  
P.O. Drawer DD, Artesia, NM 88210

DISTRICT III  
1000 Rio Brazos Rd., Aztec, NM 87410

P.O. Box 2088

Santa Fe, New Mexico 87504-2088

API NO. (assigned by OCD on New Wells)

30-139-24399

5. Indicate Type of Lease

STATE ☒

FEE ☐

6. State Oil & Gas Lease No.

E-505-6

APPLICATION FOR PERMIT TO DRILL, DEEPEN, OR PLUG BACK

1a. Type of Work:

DRILL ☒

RE-ENTER ☐

DEEPEN ☐

PLUG BACK ☐

b. Type of Well:

OIL  
WELL ☐

GAS  
WELL ☒

OTHER

SINGLE  
ZONE ☒

MULTIPLE  
ZONE ☐

7. Lease Name or Unit Agreement Name

Northeast Blanco Unit

2. Name of Operator

Blackwood & Nichols Co., LTD

8. Well No.

483

3. Address of Operator

P.O. Box 1237, Durango, CO 81302-1237

9. Pool name or Wildcat

Basin Fruitland Coal

4. Well Location

Unit Letter G : 1750 Feet From The North Line and 2045 Feet From The East Line

36 Section

31 North

Township

7 West

Range

NMPM

San Juan

County

10. Proposed Depth

3185'

11. Formation

Basin Fruitland Coal

12. Rotary or C.T.

Rotary

13. Elevations (Show whether DF, RT, GR, etc.)

6220' GL

14. Kind & Status Plug. Bond

Statewide

15. Drilling Contractor

16. Approx. Date Work will start

May 1, 1989

17. PROPOSED CASING AND CEMENT PROGRAM

SIZE OF HOLE	SIZE OF CASING	WEIGHT PER FOOT	SETTING DEPTH	SACKS OF CEMENT	EST. TOP
12 1/4"	9 5/8"	36#	500'	270/319 cuft to	circulate
8 3/4"	7"	23#	2859'	440/744 cuft to	circulate
6 1/4"	5 1/2"	17#	2759'-3185'	30/39 cuft to	circulate

Propose to spud in the San Jose formation. Will drill a 12 1/4" hole to a TD of 500'. Surface casing will be run and cemented with cement returns to surface. WOC 12 hours. Test to 600 psi. Drill an 8 3/4" hole with fresh water mud to TD of 2859' with fresh water mud. No abnormal pressures or poisonous gases are anticipated. Run and cement intermediate casing with cement returns to surface. WOC 12 hours. Test to 1500 psi. Drill a 6 1/4" hole through the Fruitland coals using water and air. A 5 1/2" liner will be run. The liner may or may not be cemented depending on the wells natural producing ability.

RECEIVED

APR 26 1989

OIL CON. DIV  
DIST. 3

Surface ownership is Bureau of Reclamation

IN ABOVE SPACE DESCRIBE PROPOSED PROGRAM: IF PROPOSAL IS TO DEEPEN OR PLUG BACK, GIVE DATA ON PRESENT PRODUCTIVE ZONE AND PROPOSED NEW PRODUCTIVE ZONE. GIVE BLOWOUT PREVENTER PROGRAM, IF ANY.

I hereby certify that the information above is true and complete to the best of my knowledge and belief.

SIGNATURE

William F. Clark

TITLE Operations Manager

DATE

April 24, 1989

TYPE OR PRINT NAME

TELEPHONE NO.

(This space for State Use)

APPROVED BY

Don Bush

TITLE

DEPUTY OIL & GAS INSPECTOR, DIST. #3

DATE

MAY 01 1989

CONDITIONS OF APPROVAL, IF ANY:

Hold C-104 FOR NSL

APPROVAL: 11-1-89  
UNLESS OTHERWISE SPECIFIED  
SPUD NOT TO BE INITIATED  
WITHOUT APPROVAL

Submit to Appropriate  
District Office  
State Lease - 4 copies  
Fee Lease - 3 copies

State of New Mexico  
Energy, Minerals and Natural Resources Department

Form C-102  
Revised 1-1-89

OIL CONSERVATION DIVISION

P.O. Box 2088  
Santa Fe, New Mexico 87504-2088

DISTRICT I  
P.O. Box 1980, Hobbs, NM 88240

DISTRICT II  
P.O. Drawer DD, Artesia, NM 88210

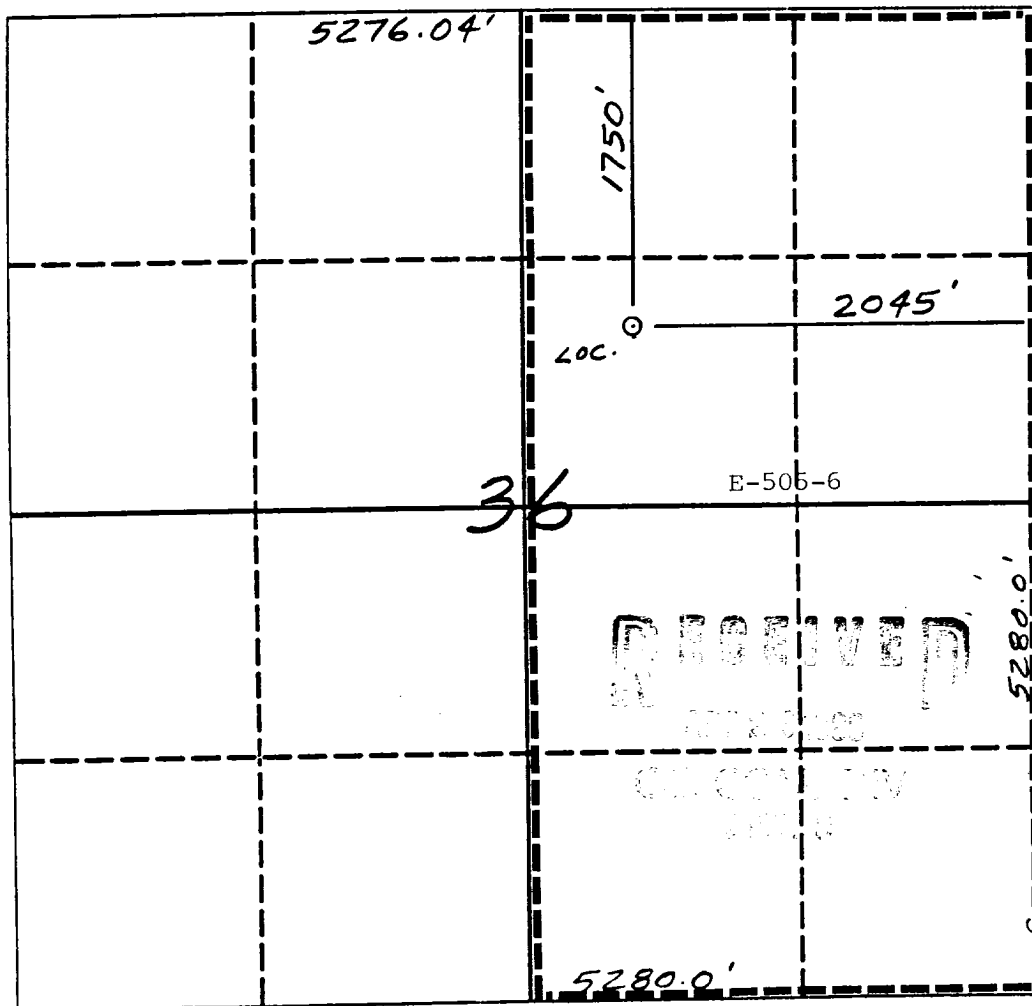
DISTRICT III  
1000 Rio Brazos Rd., Aztec, NM 87410

WELL LOCATION AND ACREAGE DEDICATION PLAT

All Distances must be from the outer boundaries of the section

Operator Blackwood & Nichols Co. LTD.			Lease Northeast Blanco Unit		Well No. 483
Unit Letter G	Section 36	Township 31 North	Range 7 West	County Rio Arriba	
Actual Footage Location of Well: 1750 feet from the North line and 2045 feet from the East line					
Ground level Elev. 6220'	Producing Formation Fruitland Coal		Pool Basin Fruitland Coal	Dedicated Acreage: 320 Acres	

- Outline the acreage dedicated to the subject well by colored pencil or hatchure marks on the plat below.
- If more than one lease is dedicated to the well, outline each and identify the ownership thereof (both as to working interest and royalty).
- If more than one lease of different ownership is dedicated to the well, have the interest of all owners been consolidated by communitization, unitization, force-pooling, etc.?  
☐ Yes ☐ No If answer is "yes" type of consolidation N/A  
If answer is "no" list the owners and tract descriptions which have actually been consolidated. (Use reverse side of this form if necessary.)  
No allowable will be assigned to the well until all interests have been consolidated (by communitization, unitization, forced-pooling, or otherwise) or until a non-standard unit, eliminating such interest, has been approved by the Division.



OPERATOR CERTIFICATION

I hereby certify that the information contained herein is true and complete to the best of my knowledge and belief.

Signature: William F. Clark  
Printed Name: William F. Clark  
Position: Operations Manager  
Company: Blackwood & Nichols Co.  
Date: April 24, 1989

SURVEYOR CERTIFICATION

I hereby certify that the well location shown on this plat was plotted from field notes of actual surveys made by me or under my supervision, and that the same is true and correct to the best of my knowledge and belief.

Date Surveyed: 4-14-89  
Signature: Neale C. Edwards  
Professional Surveyor

Certificate No. 6857


VICINITY MAP  
Blackwood & Nichols Co., LTD

Northeast Blanco Unit No. 483

1750'FNL - 2045'FEL

Section 36, T31N, R7W

*12A* San Juan Co., New Mexico

Proposed Location: 

Existing Access Road: \_\_\_\_\_

Proposed New Access Road: - - - - -

