

UNITED STATES  
DEPARTMENT OF THE INTERIOR  
BUREAU OF LAND MANAGEMENT

FORM APPROVED  
Budget Bureau No. 1004-0135  
Expires: March 31, 1993

SUNDRY NOTICES AND REPORTS ON WELLS

Do not use this form for proposals to drill or to deepen or reentry to a different reservoir. Use  
"APPLICATION FOR PERMIT--" for such proposals

5. Lease Designation and Serial No.  
SF - 078771

6. If Indian, Allottee or Tribe Name

SUBMIT IN TRIPLICATE

7. If Unit or CA, Agreement Designation  
ROSA UNIT

1. Type of Well  
☐ Oil Well ☒ Gas Well ☐ Other

8. Well Name and No.  
ROSA UNIT #213

2. Name of Operator  
WILLIAMS PRODUCTION COMPANY

9. API Well No.  
30-039-24426

3. Address and Telephone No.  
PO BOX 3102 MS 37-2, TULSA, OK 74101 (918) 561-6254

10. Field and Pool, or Exploratory Area  
BASIN FRUITLAND COAL

4. Location of Well (Footage, Sec., T., R., M., or Survey Description)  
1020' FNL & 1535' FEL, NW/4 NE/4 SEC 23-31N-6W

11. County or Parish, State  
RIO ARRIBA, NM

CHECK APPROPRIATE BOX(s) TO INDICATE NATURE OF NOTICE, REPORT, OR OTHER DATA

TYPE OF SUBMISSION

TYPE OF ACTION

☒ Notice of Intent

☐ Subsequent Report

☐ Final Abandonment

☐ Abandonment

☐ Recompletion

☐ Plugging Back

☐ Casing Repair

☐ Altering Casing

☒ Other RECAVITATION

☐ Change of Plans

☐ New Construction

☐ Non-Routine Fracturing

☐ Water Shut-Off

☐ Conversion to Injection

☐ Dispose Water

(Note: Report results of multiple  
completion on Well Completion or  
Recompletion Report and Log form.)

13. Describe Proposed or Completed Operations (Clearly state all pertinent details, and give pertinent dates, including estimated date of starting any proposed work. If well is directionally drilled, give subsurface locations and measured and true vertical depths for all markers and zones pertinent to this work.)\*

Williams Production Company proposes to recavitate the existing Fruitland Coal well as per the attached procedure.

RECEIVED  
BLM  
MAY 16 AM 10:42  
BUREAU OF LAND MANAGEMENT, NM

14. I hereby certify that the foregoing is true and correct

Signed Susan Griguhn  
SUSAN GRIGUHN

Title CLERK

Date May 13, 1997

(This space for Federal or State office use)

Approved by /s/ Duane W. Spencer

Title \_\_\_\_\_

Date MAY 22 1997

Conditions of approval, if any:

4-22-97

WILLIAMS PRODUCTION COMPANY  
RECOMPLETION PROGNOSIS  
ROSA 213

Purpose: To recavitate the Fruitland Coal zone.

1. Notify BLM 24 hours prior to moving in.  
Notify Dante Vescovi with T.I.W.  
Spot and fill 2- 400 bbl tanks with 1% KCl water. Do not filter water unless necessary. Filter water to 25 microns if necessary.
2. MIRUSU. Nipple up BOP's, 2 blooie lines, working valves and 2" relief line. Test BOP's.
3. TOOH w/ 73 jts of 2-3/8" tubing and LD.
4. Pickup 3-1/2" drill pipe w/ 4-3/4" bit. TIH w/drill pipe and clean out to PBTD @ 3125'. TOOH.  
  
Notify Dante Vescovi with T.I.W. to be on location with liner setting/retrieving tool. TIH with T.I.W. setting tool on 3-1/2" drill pipe. Tag liner top at 2902'. Thread setting tool into liner langer and pull straight out to release hanger and liner. TOH with liner and drill pipe.
5. If liner recovery with setting tool is unsuccessful, mill out as follows. Pickup rotary shoe, bumper sub, jars, 6-1/4" mill and 4-3/4" drill collars on 3-1/2" drill pipe and TIH. Mill the top hold down slips off the JGS, Steel Sleeve, Right Hand Release liner hanger @ 2797'. TOOH. Pick up a spear and the fishing tool assembly and TIH. Spear into the liner top and jar liner loose.
6. TOOH w/ 5-1/2" Liner and LD. Repair liner if necessary.
7. PU 6-1/4" bit on 3-1/2" DP and TIH. Clean out to 3125'. TOOH.
8. PU 7" X 9-1/2" Underreamer and underream from 2944' to 3125'. TOOH.
9. Install three 750 cfm rated compressors with boosters and one 750 cfm compressor with booster for backup on location.
10. TIH w/ 6-1/4" bit on 3-1/2" DP and circulate out fill. Run 10 to 5 bbl sweeps using 1 GPB of soap if necessary.
11. PU bit and drill pipe to 2944'. Pressure up hole to 3300 psi (Max pressure) then surge. Do this an ave. of 5 times.
12. Repeat steps for 10 and 11 for 2 weeks or until gas production no longer increases.  
  
NOTE: Accurate guages will be essential in determining the success of each step.
13. TOH w/ 6-1/4" bit on 3-1/2" DP. PU original 5-1/2" Liner on 3-1/2 DP. Land liner @ 3125' with 100' overlap in 7". TOOH w/ 3-1/2" DP and LD.
14. PU 73 jts of 2-3/8" and RIH. Land tubing @ 3114'.

15. ND BOP and NU wellhead. Shut well in for buildup.
16. Cleanup location and release rig.

  
\_\_\_\_\_  
Sterg Katirgis  
Senior Engineer

# ROSA UNIT #213

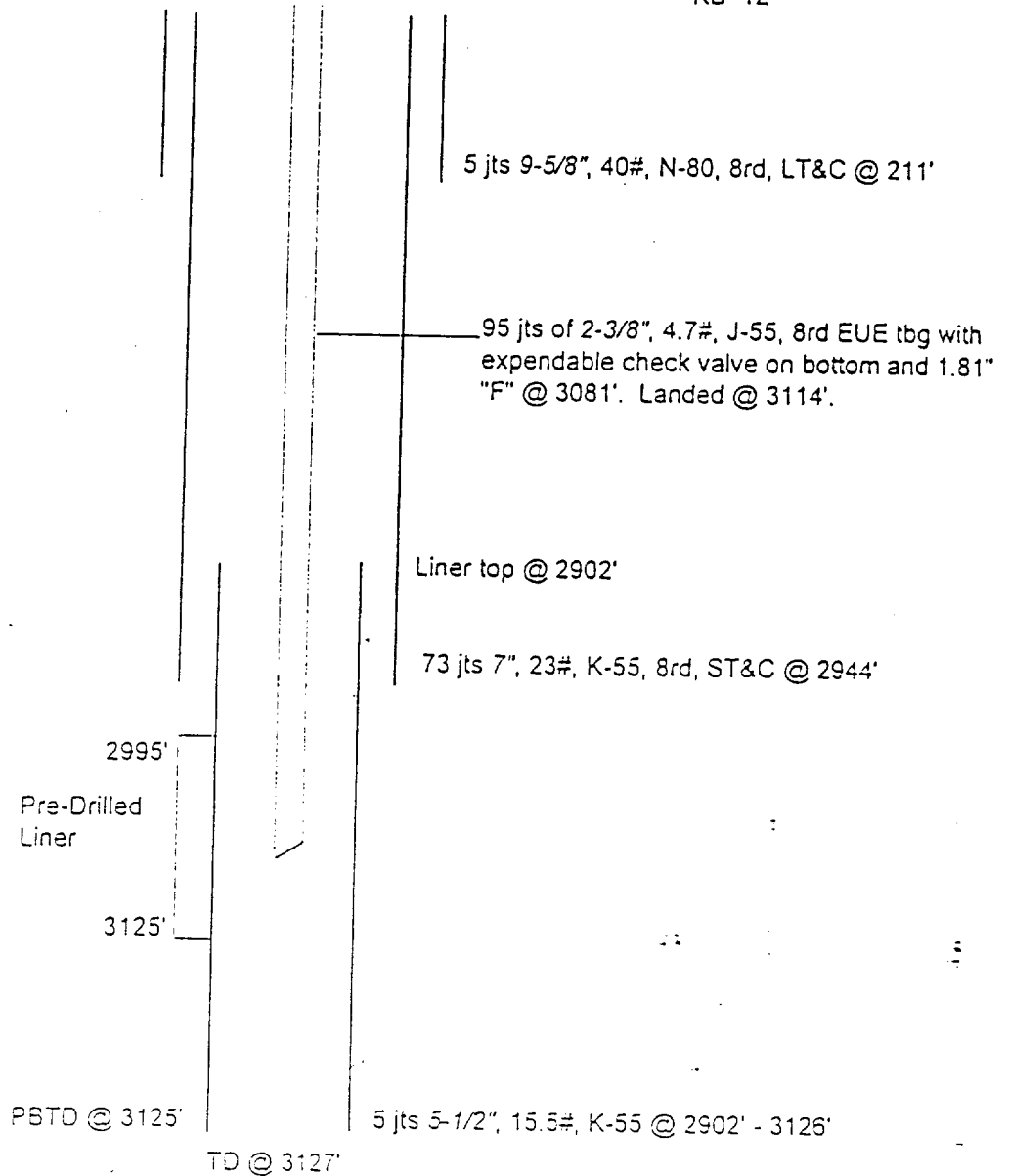
## FRUITLAND COAL

1020' FNL 1535' FEL  
NW/4 NE/4 SEC 23B T31N R6W  
Rio Arriba Co, NM

Elevation: 6285' GL  
KB 12'

Drilled in 1989  
ID'd in 1990

Ojo Alamo 2356'  
Kirtland 2447'  
Fruitland 2956'



HOLE SIZE	CASING	CEMENT	TOP OF CMT
12-1/4"	9-5/8" 40#	150 sx	SURFACE
8-3/4"	7" 23#	500 sx	SURFACE
6-1/4"	5-1/2" 15.5#	NO CEMENT	N/A

## PERTINENT DATA SHEET

WELLNAME: Rosa #213

FIELD: Basin Fruitland Coal

LOCATION: 1020'F<sup>N</sup> 3L, 1535'FEL, Sec 23, T31N, R6W

ELEVATION: 6285' GL TD: 3127'

KB: 12'

PBTD: 3125'

COUNTY: Rio Arriba

STATE: New Mexico

DATE COMPLETED: 11/14/89

CASING TYPE	CASING SIZE	HOLE SIZE	WEIGHT & GRADE	DEPTH	CEMENT	TOP
Surface	9-5/8"	12-1/4"	40.00#, N-80	2211'	150sx	surface
Intermediate Casing	7"	8-3/4"	23.0#, K-55	2944'	500sx	surface
Production Liner	5-1/2"	6-1/4"	15.5#, K-55	2902'-3127'	NO CEMENT	

TUBING EQUIPMENT 73 jts, 2-3/8", 4.7#, J-55, 8 rd, EUE, w/ extendable check valve on bottom, landed @ 3114'

WELLHEAD:

Casing Head - 11" x 7" C-22  
Casing Spool - NA

Tubing Head - 11" 3000# x 7 1/16" 3000#

FORMATION TOPS:

Ojo Alamo	2356'
Kirtland	2447'
Fruitland	2965'
Pictured Cliff	not present

LOGGING RECORD: Mud log.

PERFORATIONS: Predrilled liner 3125'-2995',

STIMULATION: Cavitation (11/10/90-11/11/90) 2 Pump in and surges.

PRODUCTION HISTORY: Cum 215 mmcf, Current 68.8 mcf/d

WORK OVER HISTORY: Compressor installed on 2/11/97

DFS 4/15/97