

UNITED STATES
DEPARTMENT OF THE INTERIOR
BUREAU OF LAND MANAGEMENT

APPLICATION FOR PERMIT TO DRILL, DEEPEN, OR PLUG BACK

1. TYPE OF WORK

DRILL ☒

DEEPEN ☐

PLUG BACK ☐

2. TYPE OF WELL

OIL
WELL ☐

GAS
WELL ☒

OTHER

SINGLE
ZONE ☒

MULTIPLE
ZONE ☐

3. NAME OF OPERATOR

Northwest Pipeline Corporation

4. ADDRESS OF OPERATOR

3539 E. 30th Street - Farmington, NM 87401

5. LOCATION OF WELL (Report location clearly and in accordance with any State requirements.)*

At surface

2275' FNL & 1410' FEL SW/4 NE/4

At proposed prod. zone

Same

6. DISTANCE IN MILES AND DIRECTION FROM NEAREST TOWN OR POST OFFICE*

Approximately 20 miles to Gobernador

7. DISTANCE FROM PROPOSED*

LOCATION TO NEAREST
PROPERTY OR LEASE LINE, FT.
(Also to nearest drilg. unit line, if any)

1410'

8. DISTANCE FROM PROPOSED LOCATION*

TO NEAREST WELL, DRILLING, COMPLETED,
OR APPLIED FOR, ON THIS LEASE, FT.

+
2500'

9. NO. OF ACRES IN LEASE

NA 2560

10. NO. OF ACRES ASSIGNED
TO THIS WELL

E 320

11. PROPOSED DEPTH

3230'

12. ROTARY OR CABLE TOOLS

Rotary

13. ELEVATIONS (Show whether DF, RT, GR, etc.)

6405' GE

DRILLING OPERATIONS AUTHORIZED ARE
SUBJECT TO COMPLIANCE WITH ATTACHED

14. APPROX. DATE WORK WILL START*

March 1, 1989

15. PROPOSED CASING AND CEMENTING PROGRAM

This action is subject to technical and
procedural review pursuant to 43 CFR 3160.3
and appeal pursuant to 43 CFR 3160.4.

SIZE OF HOLE	SIZE OF CASING	WEIGHT PER FOOT	SETTING DEPTH	
12-1/4"	9-5/8"	32#	200'	125 cu. ft.
8-3/4"	7"	20#	3055'	150 cu. Ft.
6-1/4"	5-1/2"	23#	3230'	Open hole completion

The E/2 of Section 26 is dedicated to this well.

RECEIVED
MAY 15 1989
OIL CON. DIV.
DIST. 3

IN ABOVE SPACE DESCRIBE PROPOSED PROGRAM: If proposal is to deepen or plug back, give data on present productive zone and proposed new productive zone. If proposal is to drill or deepen directionally, give pertinent data on subsurface locations and measured and true vertical depths. Give blowout preventer program, if any.

24.

SIGNED

Mike Turbaugh

TITLE Senior Engineer

DATE 12-19-88

(This space for Federal or State office use)

PERMIT NO.

APPROVAL DATE

APPROVED BY

TITLE

CONDITIONS OF APPROVAL, IF ANY:

APPROVED KH
AS AMENDED

DATE
MAY 09 1989

Joel Farrell

FOR AREA MANAGER

ch-1

*See Instructions On Reverse Side

All distances must be from the outer boundaries of the Section.

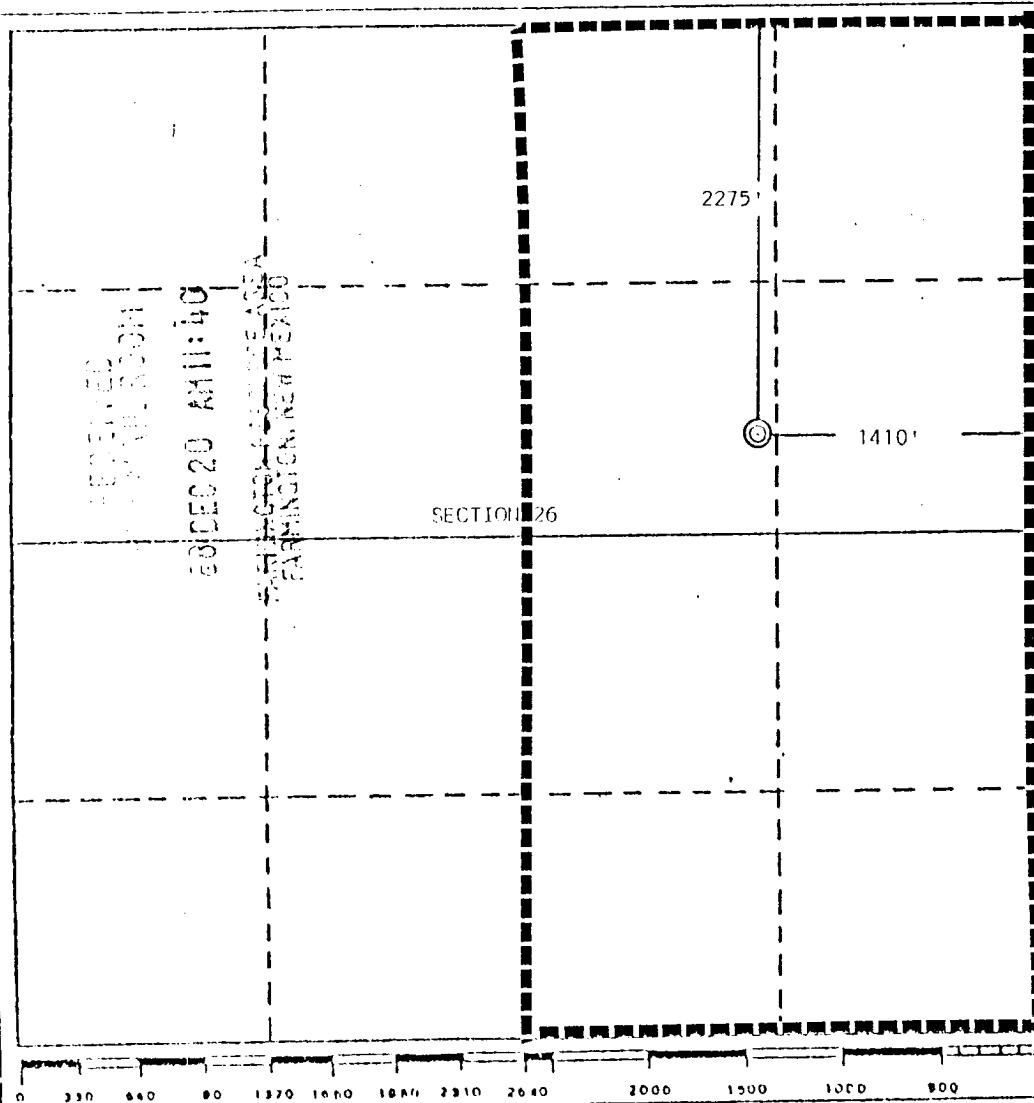
Operator Northwest Pipeline Corporation		Lease Rosa Unit		Well No. 211
Unit Letter G	Section 26	Township 31 North	Range 6 West	County Rio Arriba
Actual Footage Location of Well:				
2275	feet from the North	line and	1410	feet from the East line
Ground Level Elev. 6405	Producing Formation Fruitland	Pool Basin Fruitland Pool	Dedicated Acreage: 320 Acres	

1. Outline the acreage dedicated to the subject well by colored pencil or hachure marks on the plat below.
2. If more than one lease is dedicated to the well, outline each and identify the ownership thereof (both as to working interest and royalty).
3. If more than one lease of different ownership is dedicated to the well, have the interests of all owners been consolidated by communitization, unitization, force-pooling, etc?

☒ Yes ☐ No If answer is "yes," type of consolidation unitization

If answer is "no," list the owners and tract descriptions which have actually been consolidated. (Use reverse side of this form if necessary.)

No allowable will be assigned to the well until all interests have been consolidated (by communitization, unitization, forced-pooling, or otherwise) or until a non-standard unit, eliminating such interests, has been approved by the Division.



CERTIFICATION

I hereby certify that the information contained herein is true and complete to the best of my knowledge and belief.

Mike Turnbaugh

Name
Mike Turnbaugh

Position
Senior Engineer

Company
Northwest Pipeline Corp.

Date
10-31-88

I hereby certify that the well location shown on this plat was plotted from field notes of actual surveys made by me or under my supervision, and that the same is true and correct to the best of my knowledge and belief.

Date Surveyed
October 10, 1988

Registered Professional Engineer
and/or Land Surveyor

Edgar L. Risenhoover

Certificate No. 5979

Edgar L. Risenhoover, L.S.

