

UNITED STATES
DEPARTMENT OF THE INTERIOR
BUREAU OF LAND MANAGEMENT

APPLICATION FOR PERMIT TO DRILL, DEEPEN, OR PLUG BACK

1a. TYPE OF WORK

DRILL ☒

DEEPEN ☐

PLUG BACK ☐

b. TYPE OF WELL

OIL
WELL ☐

GAS
WELL ☒

OTHER

SINGLE
ZONE ☒

MULTIPLE
ZONE ☐

2. NAME OF OPERATOR

Northwest Pipeline Corporation

3. ADDRESS OF OPERATOR

3539 East 30th Street - Farmington, NM 87401

4. LOCATION OF WELL (Report location clearly and in accordance with any State requirements.)*

At surface

990' FWL & 1720' FSL NE/4 SW/4

At proposed prod. zone

Same

14. DISTANCE IN MILES AND DIRECTION FROM NEAREST TOWN OR POST OFFICE*

Approximately 20 miles to Gobernador

15. DISTANCE FROM PROPOSED*

LOCATION TO NEAREST
PROPERTY OR LEASE LINE, FT.

(Also to nearest dir. unit line, if any)

990'

16. NO. OF ACRES IN LEASE

2507.30

17. NO. OF ACRES ASSIGNED
TO THIS WELL

232.79

18. DISTANCE FROM PROPOSED LOCATION*

TO NEAREST WELL, DRILLING, COMPLETED,
OR APPLIED FOR, ON THIS LEASE, FT.

+8000'

19. PROPOSED DEPTH

3242'

20. ROTARY OR CABLE TOOLS

Rotary

21. ELEVATIONS (Show whether DF, RT, GR, etc.)

CASING

SURFACE

22. APPROX. DATE WORK WILL START*

3-1-89

PROPOSED CASING AND CEMENTING PROGRAM

SIZE OF CASING	SIZE OF CASING	WEIGHT PER FOOT	SETTING DEPTH	QUANTITY OF CEMENT
12-1/4"	9-5/8"	32.3#	200'	125 cu.ft.
8-3/4"	7"	20#	3071'	145 cu.ft.
6-1/4"	5-1/2"	23#	3242'	Open hole completion

The S/2 of Section 30 is dedicated to this well.

Location is unorthodox due to non-standard size section. E/2 of Section 30 is standard, W/2 of Section \pm 1205' wide.

RECEIVED
MAY 17 1989
OIL CON. DIV
DIST. 3

IN ABOVE SPACE DESCRIBE PROPOSED PROGRAM: If proposal is to deepen or plug back, give data on present productive zone and proposed new productive zone. If proposal is to drill or deepen directionally, give pertinent data on subsurface locations and measured and true vertical depths. Give blowout preventer program, if any.

24.

SIGNED

Mike Turnbaugh

TITLE

Sr. Engineer

DATE

11-1-88

PERMIT NO.

APPROVAL DATE

APPROVED BY

TITLE

CONDITIONS OF APPROVAL, IF ANY:

APPROVED
AS AMENDED

MAY 10 1989

AREA MANAGER

ch-1 MSP-1571

*See Instructions On Reverse Side

All distances must be from the outer boundaries of the Section.

OCT 27 1988

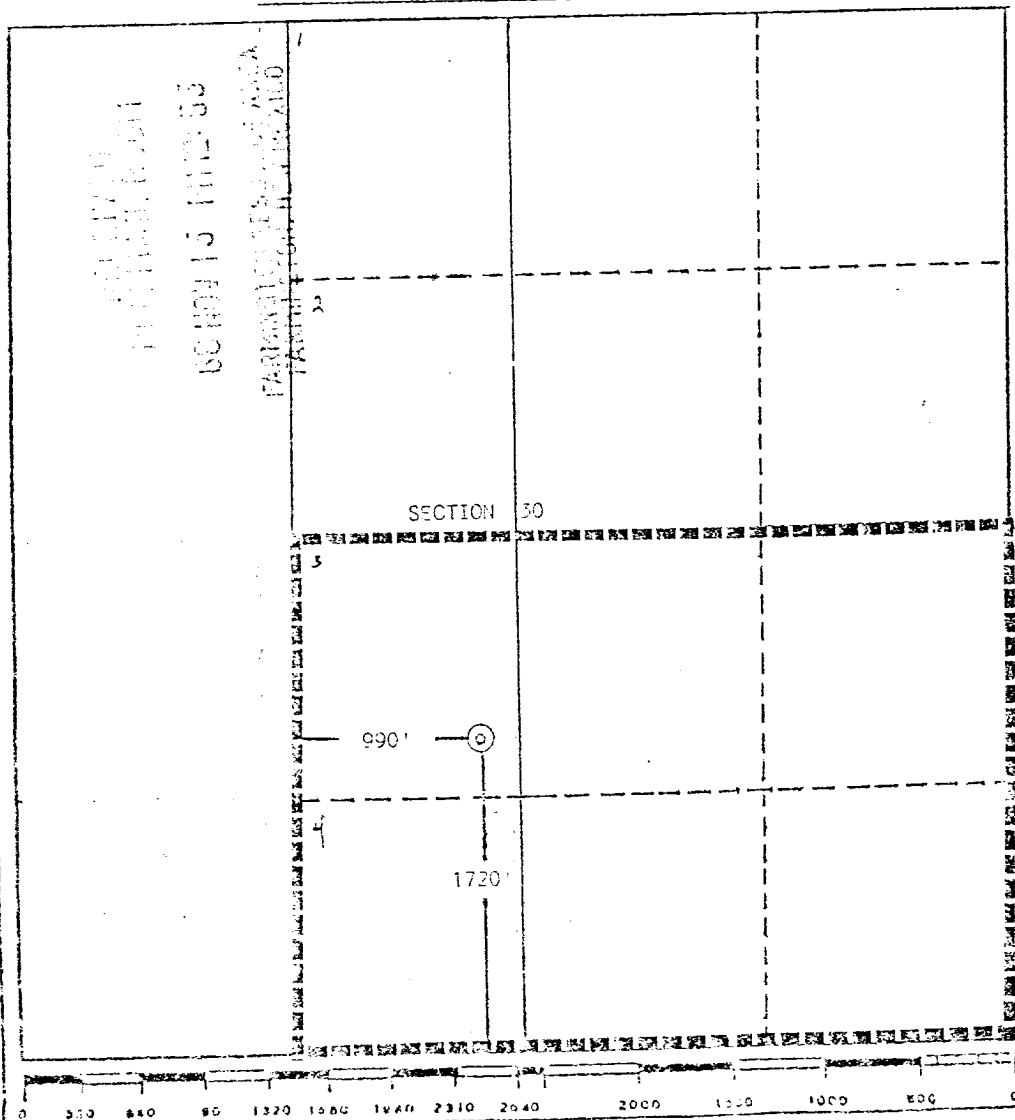
Owner Northwest Pipeline Corporation		Lease Rosa Unit		Well No. 233
Unit Letter K	Section 30	Township 31 North	Range 5 West	County Rio Arriba
Actual Footage Location of Well: 1720 feet from the South line and 990 feet from the West line				
Ground Level Elev. 6400	Producing Formation Fruitland	Pool Basin Fruitland Pool	Dedicated Acreage: 232.79 Acres	

1. Outline the acreage dedicated to the subject well by colored pencil or hachure marks on the plat below.
2. If more than one lease is dedicated to the well, outline each and identify the ownership thereof (both as to working interest and royalty).
3. If more than one lease of different ownership is dedicated to the well, have the interests of all owners been consolidated by communitization, unitization, force-pooling, etc?

☒ Yes ☐ No If answer is "yes," type of consolidation unitization

If answer is "no," list the owners and tract descriptions which have actually been consolidated. (Use reverse side of this form if necessary.)

No allowable will be assigned to the well until all interests have been consolidated (by communitization, unitization, otherwise) or until a non-standard unit, eliminating such interests, has been approved by the Division.



CERTIFICATION

I hereby certify that the information contained herein is true and complete to the best of my knowledge and belief.

Mike Turnbaugh

Name
Mike Turnbaugh
Position
Senior Engineer
Company
Northwest Pipeline Corp.

Date
10-26-88

I hereby certify that the well location shown on this plat was plotted from field notes of actual surveys made by me or under my supervision and that the same is true and correct to the best of my knowledge and belief.

Date Surveyed
October 10, 1988

Registered Professional Engineer
and/or Land Surveyor

Edgar L. Risenhoover

Certification No. 5979
Edgar L. Risenhoover, L.S.

B2m
GB



STATE OF NEW MEXICO
ENERGY, MINERALS AND NATURAL RESOURCES DEPARTMENT
OIL CONSERVATION DIVISION

mes
APD
5-9-89

GARREY CARRUTHERS
GOVERNOR

POST OFFICE BOX 2088
STATE LAND OFFICE BUILDING
SANTA FE, NEW MEXICO 87504
(505) 827-5800

May 2, 1989

Northwest Pipeline Corporation
3539 East 30th Street
Farmington, NM 87401

Attention: Mike Turnbaugh
Senior Engineer

Administrative Order NSP-1571

Dear Mr. Turnbaugh:

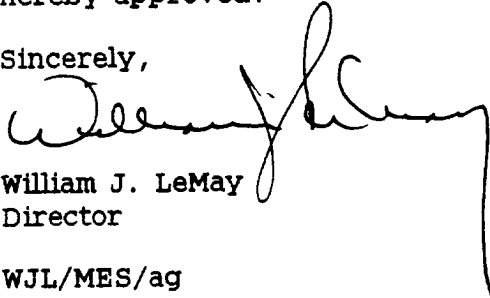
Reference is made to your application of November 17, 1988 for a 232.79-acre non-standard gas proration unit consisting of the following acreage in the Basin-Fruitland Coal (Gas) Pool:

RIO ARriba COUNTY, NEW MEXICO
TOWNSHIP 31 NORTH, RANGE 5 WEST, NMPM
Section 30: Lots 3 and 4 and the SE/4

It is my understanding that this unit is to be dedicated to your Rosa Unit Well No. 233 to be drilled at a standard coal gas well location 1720 feet from the South line and 990 feet from the West line (Unit K) of said Section 30.

By authority granted me under the provisions of Rule 6 of the Special Rules and Regulations for the Basin-Fruitland Coal (Gas) Pool, as promulgated by Division Order No. R-8768, the above non-standard gas proration unit is hereby approved.

Sincerely,


William J. LeMay
Director

WJL/MES/ag

cc: Oil Conservation Division - Aztec
NM Oil and Gas Engineering Committee - Hobbs
US Bureau of Land Management - Farmington

RECEIVED
MAY 04 1989
OIL CON. DIV.
DIST. 3



STATE OF NEW MEXICO
ENERGY AND MINERALS DEPARTMENT
OIL CONSERVATION DIVISION
AZTEC DISTRICT OFFICE

1000 RIO BRAZOS ROAD
AZTEC, NEW MEXICO 87410
(505) 334-6178

OIL CONSERVATION DIVISION
BOX 2088
SANTA FE, NEW MEXICO 87501

DATE 11-23-88

RE: Proposed MC _____
Proposed DHC _____
Proposed NSL X _____
Proposed SWD _____
Proposed WFX _____
Proposed PMX _____

NSP X

Gentlemen:

I have examined the application dated 11-17-88

for the NORTHWEST PIPELINE ROSA UNIT #233 K-30-31N-5W
Operator Lease and Well No. Unit, S-T-R

and my recommendations are as follows:

APPROVE

Yours truly,

Eric Brund

NORTHWEST PIPELINE CORPORATION

PRODUCTION & DRILLING
P.O. BOX 90
FARMINGTON, NEW MEXICO 87499

4320-PD-124-88

November 11, 1988

NMOCC
Attn: Bill LeMay
310 Old Santa Fe Trail
Room #206
Santa Fe, NM 87503

Re: Unorthodox Location - Rosa Unit #233

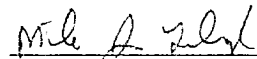
Dear Mr. LeMay:

Northwest Pipeline requests permission to drill a Fruitland well on an unorthodox location due to the original survey of Sec. 30, T31N, R5W. The W/2 of Sec. 30 is approximately 1200' wide making it impossible to maintain the 790' offsets required in the new Fruitland Pool Rules.

Northwest Pipeline is the only operator in the Rosa Unit thus no notification of offset operators is being done.

Attached is a plat and topo map.

Sincerely,



Mike J. Turnbaugh
Sr. Engineer

MJT/ch
attch

All distances must be from the outer boundaries of the Section

OCT 27 1988

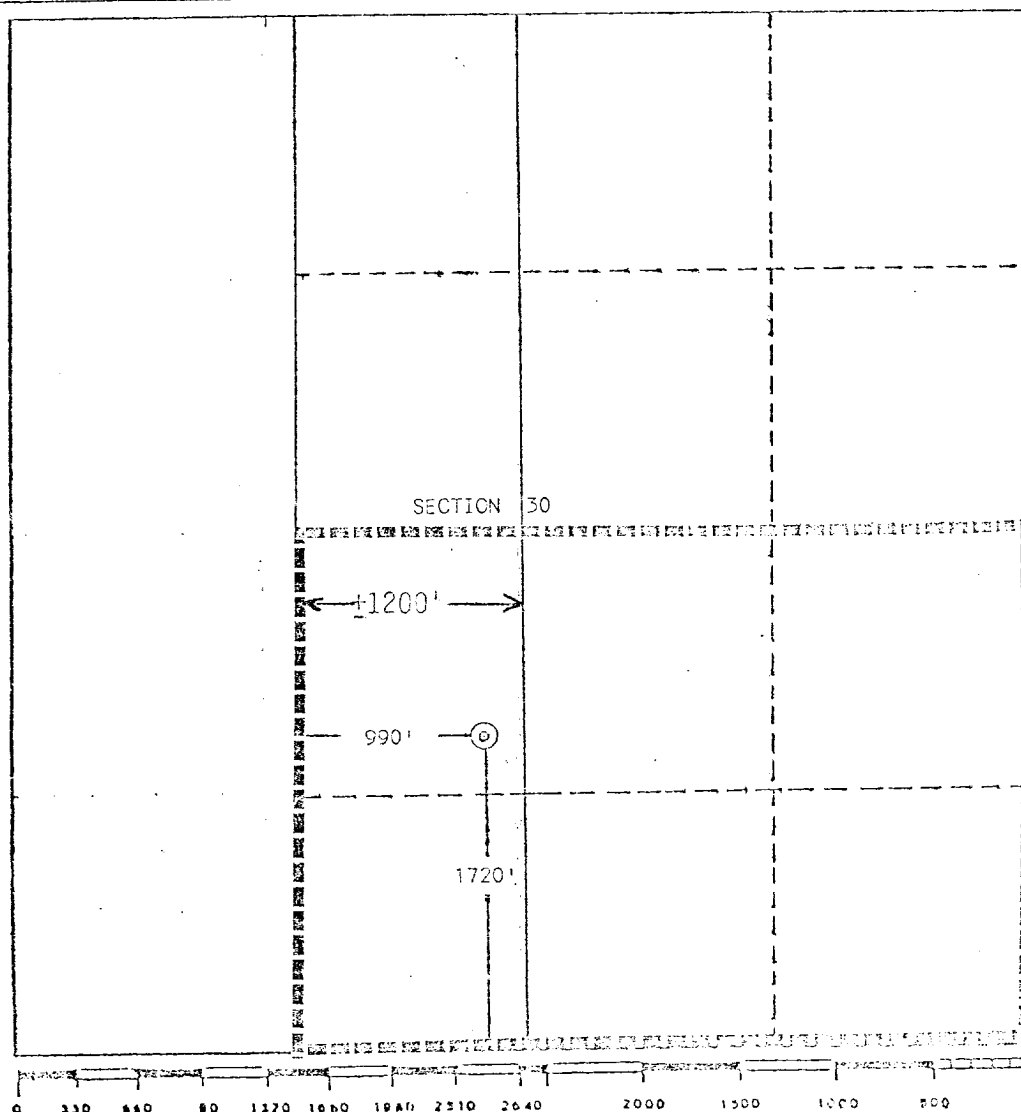
Operator Northwest Pipeline Corporation			Lease Rosa Unit		Well No. 233
Unit Letter K	Section 30	Township 31 North	Range 5 West	County Rio Arriba	
Actual Footage Location of Well: 1720 feet from the South line and 990 feet from the West line					
Ground Level Elev. 6400	Producing Formation Fruitland	Pool Basin Fruitland Pool		Dedicated Acreages 232.79 Acres	

1. Outline the acreage dedicated to the subject well by colored pencil or hatchure marks on the plat below.
2. If more than one lease is dedicated to the well, outline each and identify the ownership thereof (both as to working interest and royalty).
3. If more than one lease of different ownership is dedicated to the well, have the interests of all owners been consolidated by communitization, unitization, force-pooling, etc?

☒ Yes ☐ No If answer is "yes," type of consolidation unitization

If answer is "no," list the owners and tract descriptions which have actually been consolidated. (Use reverse side of this form if necessary.)

No allowable will be assigned to the well until all interests have been consolidated (by communitization, unitization, forced-pooling, or otherwise) or until a non-standard unit, eliminating such interests, has been approved by the Division.



CERTIFICATION

I hereby certify that the information contained herein is true and complete to the best of my knowledge and belief.

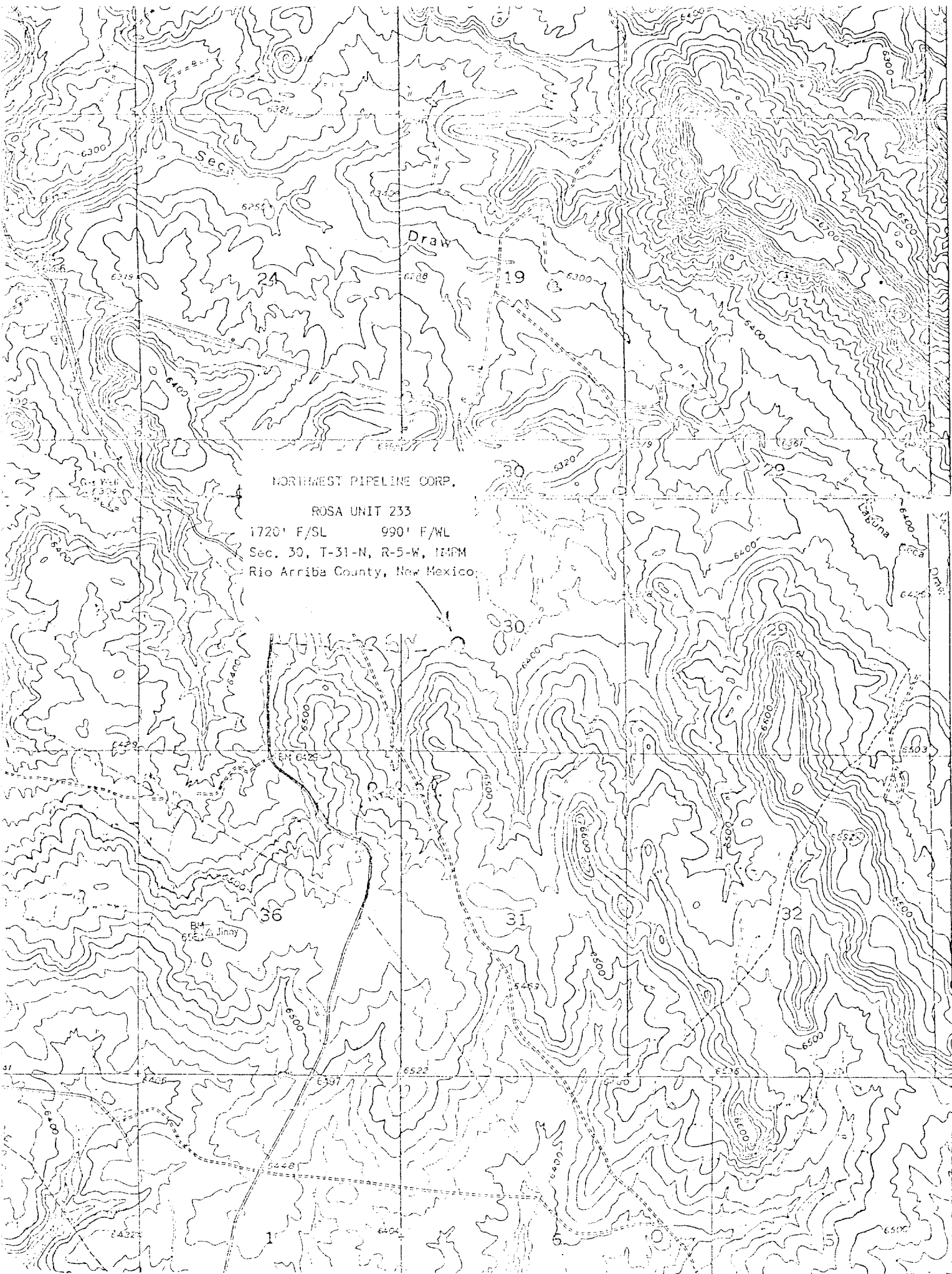
Name
Mike Turnbaugh
Position
Senior Engineer
Company
Northwest Pipeline Corp.
Date
10-26-88

I hereby certify that the information shown on this plat was plotted from field notes of actual surveys made by me or under my supervision and that the same is true and correct to the best of my knowledge and belief.

Date Surveyed
October 10, 1988

Registered Professional Engineer
and/or Land Surveyor

Edgar L. Risenhoover
Certificate No. 5979
Edgar L. Risenhoover, L.S.



NORTHWEST PIPELINE CORP.

ROSA UNIT 233

1720' F/SL 990' F/WL

Sec. 30, T-31-N, R-5-W, 1MPM

Rio Arriba County, New Mexico

2140

2140
WES

2140

2140

2140

2140

T 31

213

FEET

T 31

2140