



STATE OF NEW MEXICO  
ENERGY AND MINERALS DEPARTMENT  
OIL CONSERVATION DIVISION  
AZTEC DISTRICT OFFICE

GARREY CARRUTHERS  
GOVERNOR

1000 RIO BRAZOS ROAD  
AZTEC, NEW MEXICO 87410  
(505) 334-6178

Date: 7-18-89

Oil Conservation Division  
P.O. Box 2088  
Santa Fe, NM 87504-2088

Re: Proposed MC \_\_\_\_\_  
Proposed DHC \_\_\_\_\_  
Proposed NSL X \_\_\_\_\_  
Proposed SWD \_\_\_\_\_  
Proposed WFX \_\_\_\_\_  
Proposed PMX \_\_\_\_\_

Gentlemen:

*NSP*

I have examined the application dated 7-18-89

for the Northwest Pipeline Corp. Rose Unit # 238  
Operator Lease & Well No.

J-3-31N-6W and my recommendations are as follows:  
Unit, S-T-R

*[Signature]*

Yours truly,

*[Signature]*

NORTHWEST PIPELINE CORPORATION

PRODUCTION & DRILLING  
3539 East 30th Street  
Farmington, New Mexico 87401  
4320-PD-039-89

RECEIVED

JUL 18 1989

February 13, 1989

OIL CON. DIV.  
DIST. 3

NMOCC  
Michael Stogner  
310 Old Santa Fe Trail  
Room #206  
Santa Fe, NM 87503

Re: Non-Standard Proration Unit  
Rosa #238  
SE/4 Sec. 3, T31N, R6W

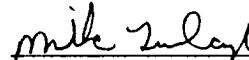
Dear Mr. Stogner

Attached you will find a copy of Northwest Pipeline's application for non-standard proration unit. Also attached is an application for an unorthodox location.

As can be seen from the attached map there are no offset operators requiring notification on this particular well.

Should you need anything else to proceed with administrative approval of this well please let me know.

Sincerely,

  
Mike Turnbaugh  
Senior Engineer

MJT/ch

RECEIVED  
FEB 20 1989  
OIL CONSERVATION DIVISION  
SANTA FE

NORTHWEST PIPELINE CORPORATION

PRODUCTION & DRILLING  
3539 East 30th Street  
Farmington, New Mexico 87401  
4320-PD-048-89

February 13, 1989

NMOCD

Michael Stogner  
310 Old Santa Fe Trail  
Room #206  
Santa Fe, NM 87503

Re: Unorthodox Location  
Rosa Unit #238  
SE/4 Sec. 3, T31N, R6W

Dear Mr. Stogner:

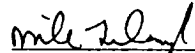
The subject well has been staked in the SE/4 of Sec. 3 which violates Rule 7 of Order R-8768.

Navajo Lake covers the SW/4 of Sec. 3 making a standard location impossible (see attached map).

Northwest Pipeline seeks administrative approval for this unorthodox location.

No offset operators exist thus notification will not be required.

Sincerely,

  
Mike Turnbaugh, Senior Engineer

MJT/ch

NORTHWEST PIPELINE CORPORATION

PRODUCTION & DRILLING  
3539 East 30th Street  
Farmington, New Mexico 87401  
4320-PD-144-88

December 8, 1988

NMOCD

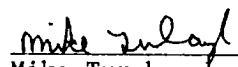
Attn: Bill Lemay  
310 Old Santa Fe Trail  
Room #206  
Santa Fe, NM 87503

Re: Application for Non-Standard  
Gas Proration Unit  
Rosa Unit #238  
SE/4 Sec. 3, T31N, R6W  
Dedicated Acreage: 352.87 (all of Sec. 3)

Dear Mr. Lemay:

Northwest Pipeline Corporation requests permission to produce the above captioned well as a Non-Standard Gas Unit. The unorthodox size of this unit is necessitated by a variation in the legal subdivision of the U.S. Public Land Survey. The offset operators have been notified where applicable of our intentions by certified mail and they will forward any objections directly to your office. Copies of these letters along with the receipts for certified mail are enclosed.

Sincerely,

  
Mike Turnbaugh  
Senior Engineer

MJT/ch

All distances must be from the outer boundaries of the Section.

OCT 27 1988

Operator Northwest Pipeline Corporation			Lease Rosa Unit		Well No. 238
Unit Letter J	Section 3	Township 31 North	Range 6 West	County Rio Arriba	
Actual Footage Location of Well: 2270 feet from the South line and 1840 feet from the East line					
Ground Level Elev. 6365	Producing Formation Fruitland		Pool Basin Fruitland Pool	Dedicated Acres 314.75 352.97 Acres	

1. Outline the acreage dedicated to the subject well by colored pencil or hatchure marks on the plat below.
2. If more than one lease is dedicated to the well, outline each and identify the ownership thereof (both as to working interest and royalty).
3. If more than one lease of different ownership is dedicated to the well, have the interests of all owners been consolidated by communitization, unitization, force-pooling, etc?

☒ Yes ☐ No If answer is "yes," type of consolidation unitization

If answer is "no," list the owners and tract descriptions which have actually been consolidated. (Use reverse side of this form if necessary.)

No allowable will be assigned to the well until all interests have been consolidated (by communitization, unitization, forced-pooling, or otherwise) or until a non-standard unit, eliminating such interests, has been approved by the Division.

## CERTIFICATION

I hereby certify that the information contained herein is true and complete to the best of my knowledge and belief.

*Mike Turnbaugh*

Name

Mike Turnbaugh

Position

Senior Engineer

Company

Northwest Pipeline Corp.

Date

11-1-88

I hereby certify that the well location shown on this plat was obtained from a reliable source, and that the same is true and correct to the best of my knowledge and belief.

Date Surveyed

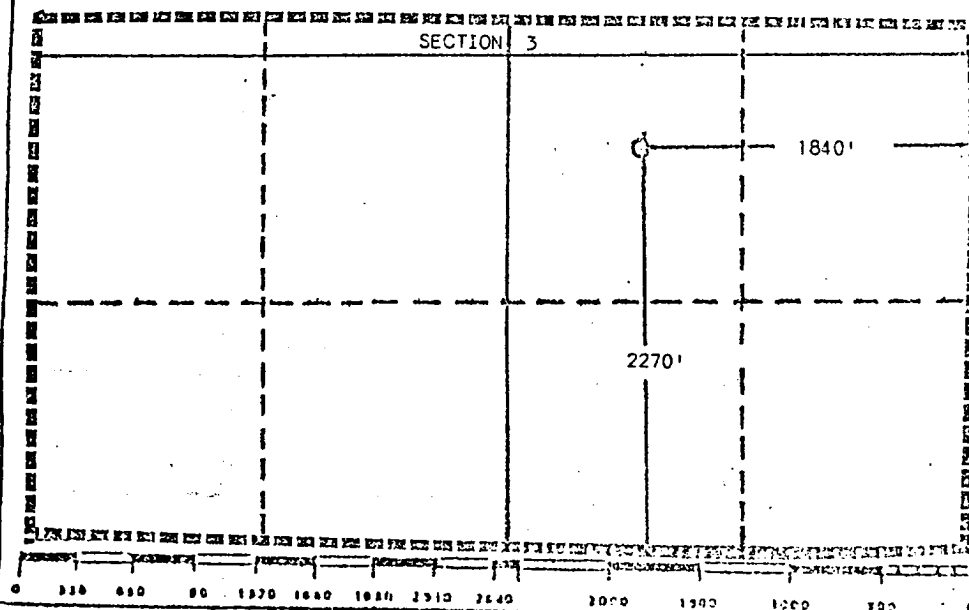
September 28, 1988

Registered Professional Engineer  
and/or Land Surveyor

*Edgar L. Risenhoover*

Certificate No. 5979

Edgar L. Risenhoover, L.S.



2270' F/SL 1840' F/EL  
Sec. 3, T-31-N, R-6-W, NMPM  
Rio Arriba County, New Mexico

