

RLM
WB

STATE OF NEW MEXICO

ENERGY, MINERALS AND NATURAL RESOURCES DEPARTMENT

OIL CONSERVATION DIVISION

GARREY CARRUTHERS
GOVERNOR

POST OFFICE BOX 2088
STATE LAND OFFICE BUILDING
SANTA FE, NEW MEXICO 87504
(505) 827-5800

July 18, 1989

Northwest Pipeline Corporation
3539 East 30th Street
Farmington, NM 87401

Attention: Mike Turnbaugh
Senior Engineer

Administrative Order NSP-1578(L)

Dear Mr. Turnbaugh:

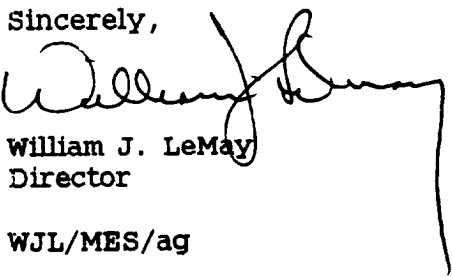
Reference is made to your applications of February 20, 1989 for a 264.56-acre non-standard gas proration unit consisting of the following acreage in the Basin-Fruitland Coal (Gas) Pool:

RIO ARRIBA COUNTY, NEW MEXICO
TOWNSHIP 31 NORTH, RANGE 5 WEST, NMPM
Section 6: All

It is my understanding that this unit is to be dedicated to your Rosa Unit Well No. 241 to be drilled at an unorthodox coal gas well location 535 feet from the South line and 685 feet from the East line (Unit P) of said Section 6, hereby approved under provisions of Rule 8 of the Special Rules and Regulations for this pool as promulgated by Division Order No. R-8768.

Also, by authority granted me under the provisions of Rule 6 of said Order No. R-8768, the above non-standard gas proration unit is hereby approved.

Sincerely,


William J. LeMay
Director

WJL/MES/ag

cc: Oil Conservation Division - Aztec
NM Oil and Gas Engineering Committee - Hobbs
US Bureau of Land Management - Farmington

RECEIVED

JUL 21 1989

OIL CON. D.
DIST. 3



STATE OF NEW MEXICO
ENERGY AND MINERALS DEPARTMENT
OIL CONSERVATION DIVISION
AZTEC DISTRICT OFFICE

GARREY CARRUTHERS
GOVERNOR

1000 RIO BRAZOS ROAD
AZTEC, NEW MEXICO 87410
(505) 334-6178

Date: 7-18-89

Oil Conservation Division
P.O. Box 2088
Santa Fe, NM 87504-2088

Re: Proposed MC _____
Proposed DHC _____
Proposed NSL X _____
Proposed SWD _____
Proposed WFX _____
Proposed PMX _____

Gentlemen: N3P2

I have examined the application dated 7-18-89
for the Northwest Pipeline Corp. Rosa Unit #241
Operator Lease & Well No.

P-6-31N-5W and my recommendations are as follows:
Unit, S-T-R

Approve

Yours truly,

Ed Bernal

204 → at
139
203

NORTHWEST PIPELINE CORPORATION

PRODUCTION & DRILLING
3539 East 30th Street
Farmington, New Mexico 87401
4320-PD-042-89

February 14, 1989

NMOCD
Michael Stogner
210 Old Santa Fe Trail
Room #206
Santa Fe, NM 87503

Re: Non-standard Proration Unit
Rosa Unit #241
SE/4 Sec. 6, T31N, R5W

RECEIVED
JUL 18 1989
OIL CON. DIV.
DIST. 3

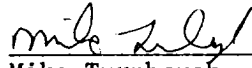
Dear Mr. Stogner:

Attached please find the original application for a non-standard proration unit on the subject well. Also attached is an application for an unorthodox location.

As can be seen from the attached map the offset operator is Meridian Oil. Notification letters are also included in this package.

Should you need anything else to proceed with administrative approval of this well please let me know.

Sincerely,


Mike Turnbaugh, Senior Engineer

MJT/ch

RECEIVED
FEB 20 1989
OIL CONSERVATION DIVISION
SANTA FE

NORTHWEST PIPELINE CORPORATION

PRODUCTION & DRILLING
3539 East 30th Street
Farmington, New Mexico 87401
4320-PD-051-89

February 14, 1989

NMOCD
Michael Stogner
310 Old Santa Fe Trail
Room #206
Santa Fe, NM 87503

Re: Unorthodox Location
Rosa Unit #241
SE/4 Sec. 6, T31N, R5W

Dear Mr. Stogner:

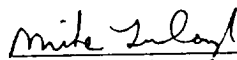
The subject well has been staked in the SE/4 of Sec. 6 which violates Rule 7 of Order R-8768.

This location was chosen with BLM wildlife personnel to avoid a sage brush treatment area which was done in the west half of the section.

Northwest Pipeline seeks administrative approval for this unorthodox location.

Offset operators exist and notification has been make. The notification letters are attached.

Sincerely,


Mike Turnbaugh, Senior Engineer

MJT/ch

NORTHWEST PIPELINE CORPORATION

PRODUCTION & DRILLING

3539 East 30th Street

Farmington, New Mexico 87401

4320-PD-147-88

December 8, 1988

NMOCD

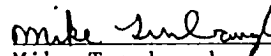
Attn: Bill Lemay
310 Old Santa Fe Trail
Room #206
Santa Fe, NM 87503

Re: Application for Non-Standard
Gas Proration Unit
Rosa Unit #241
SE/4 Sec. 6, T31N, R5W
Dedicated Acreage: 264.56 (all of Sec. 6)

Dear Mr. Lemay:

Northwest Pipeline Corporation requests permission to produce the above captioned well as a Non-Standard Gas Unit. The unorthodox size of this unit is necessitated by a variation in the legal subdivision of the U.S. Public Land Survey. The offset operators have been notified where applicable of our intentions by certified mail and they will forward any objections directly to your office. Copies of these letters along with the receipts for certified mail are enclosed.

Sincerely,


Mike Turnbaugh
Senior Engineer

MJT/ch

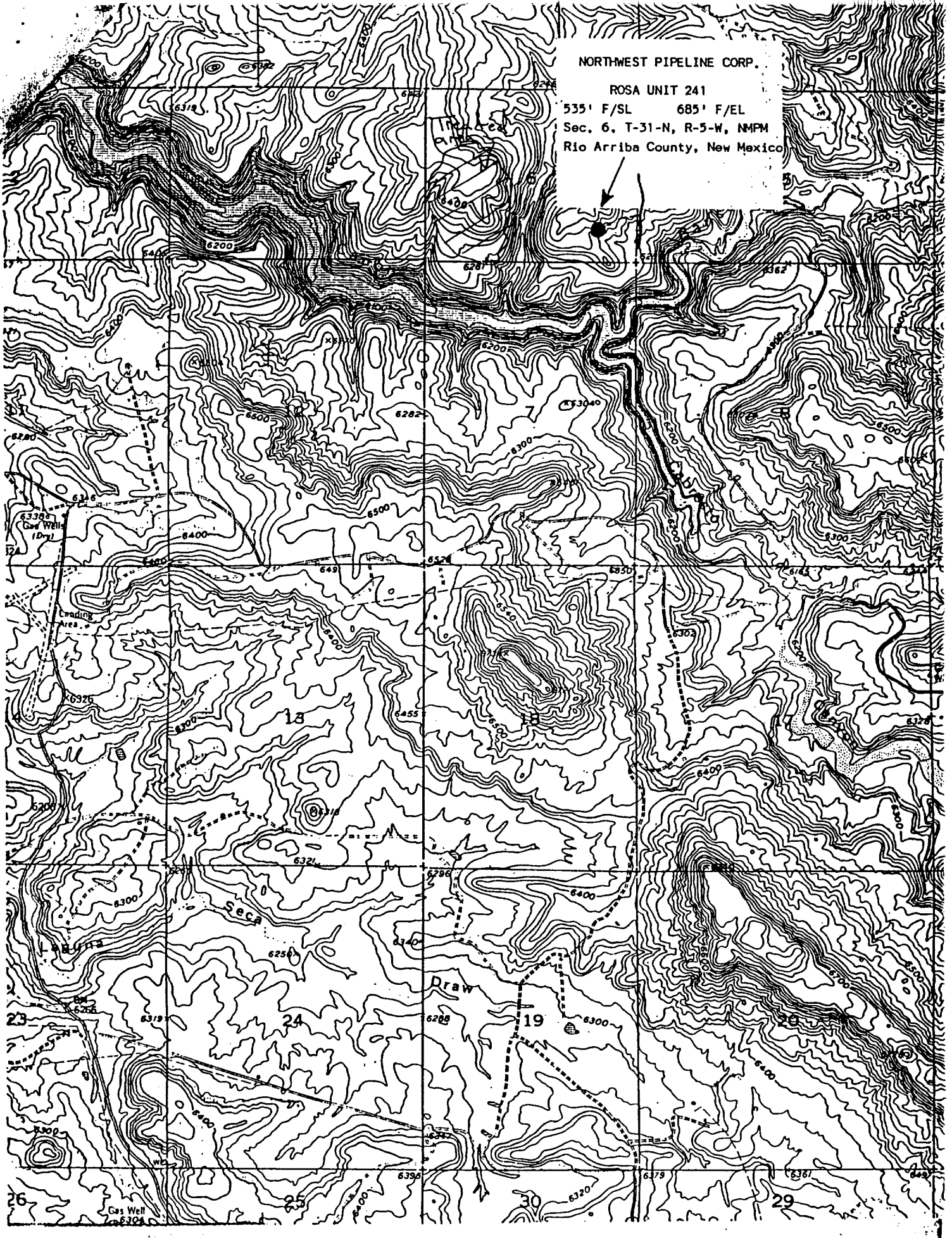
NORTHWEST PIPELINE CORP.

ROSA UNIT 241

535' F/SL 685' F/EL

Sec. 6, T-31-N, R-5-W, NMPM

Rio Arriba County, New Mexico



All distances must be from the outer boundaries of the Section.

OCT 27 1988

Operator Northwest Pipeline Corporation			Lease Rosa Unit		Well No. 241
Unit Letter P	Section 6	Township 31 North	Range 5 West	County Rio Arriba	
Actual Footage Location of Well: 535 feet from the South line and 685 feet from the East line					
Ground Level Elev. 6350	Producing Formation Fruitland		Pool Basin Fruitland Pool		Dedicated Acres 264.56
					Acres

1. Outline the acreage dedicated to the subject well by colored pencil or hatchure marks on the plat below.
2. If more than one lease is dedicated to the well, outline each and identify the ownership thereof (both as to working interest and royalty).
3. If more than one lease of different ownership is dedicated to the well, have the interests of all owners been consolidated by communitization, unitization, force-pooling, etc?

☒ Yes ☐ No If answer is "yes," type of consolidation unitization

If answer is "no," list the owners and tract descriptions which have actually been consolidated. (Use reverse side of this form if necessary.)

No allowable will be assigned to the well until all interests have been consolidated (by communitization, unitization, forced-pooling, or otherwise) or until a non-standard unit, eliminating such interests, has been approved by the Division.

CERTIFICATION

I hereby certify that the information contained herein is true and complete to the best of my knowledge and belief.

Mike Turnbaugh

Name

Mike Turnbaugh

Position

Senior Engineer

Company

Northwest Pipeline Corp.

Date

11-1-88

I hereby certify that the well location shown on this plat was plotted from field notes of actual surveys made by me or under my supervision and that the same is true and correct to the best of my knowledge and belief.

Date Surveyed

September 21, 1988

Registered Professional Engineer
and/or Land Surveyor

Edgar L. Risenhoover

Certificate No. 5979

Edgar L. Risenhoover, I. S.

